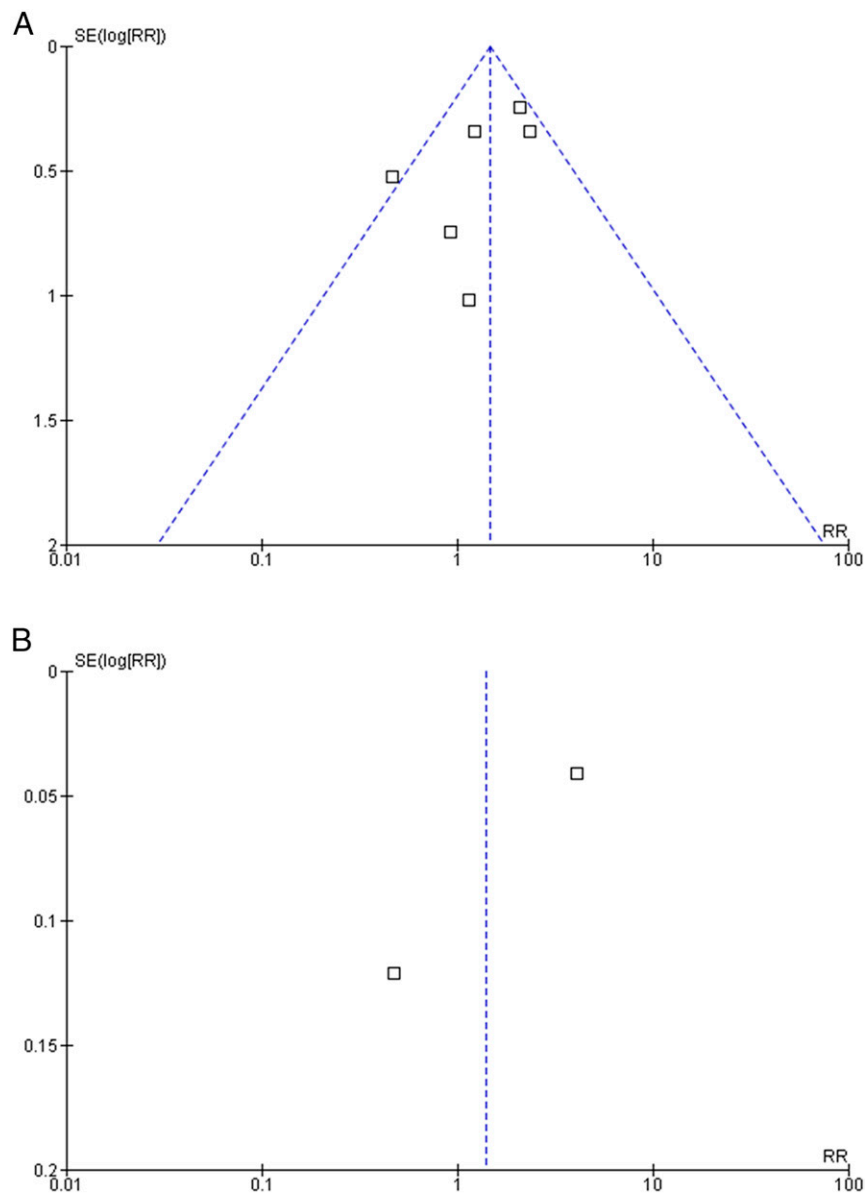
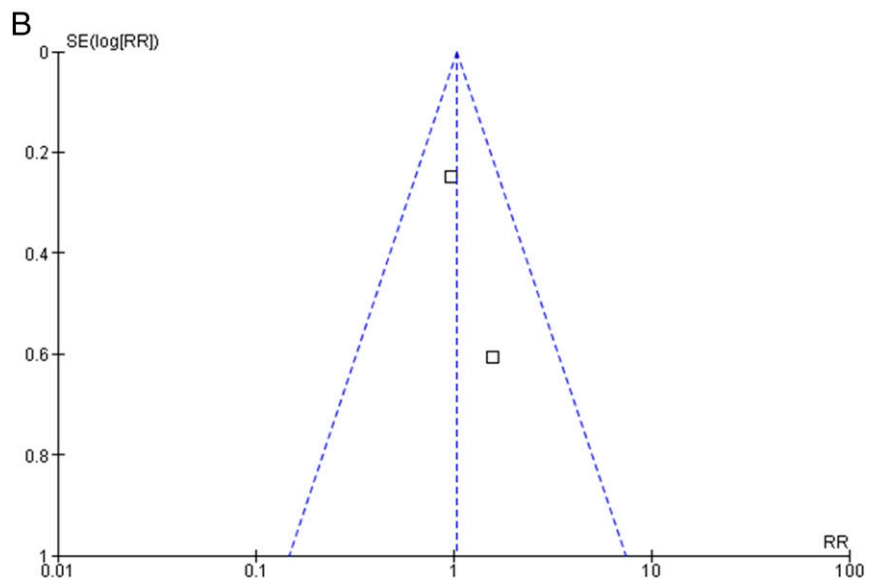
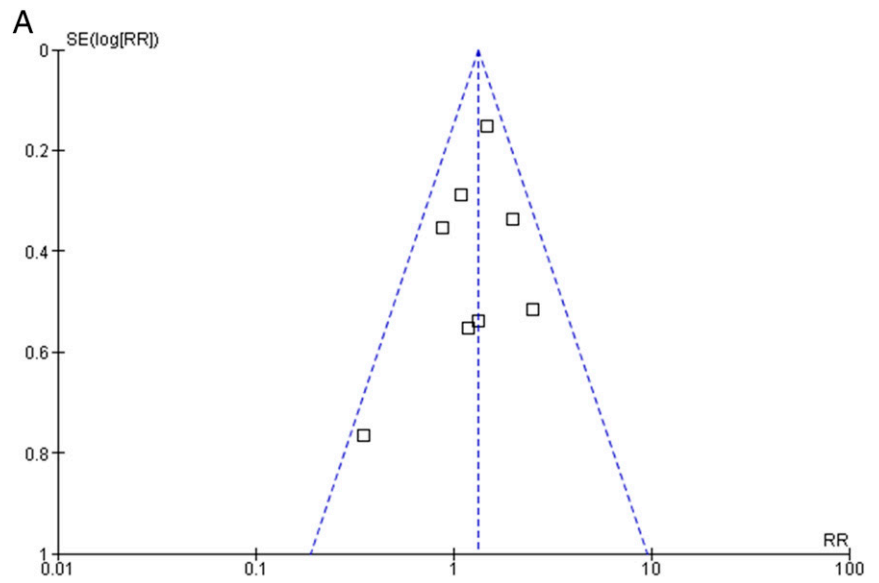


## Supplemental Information



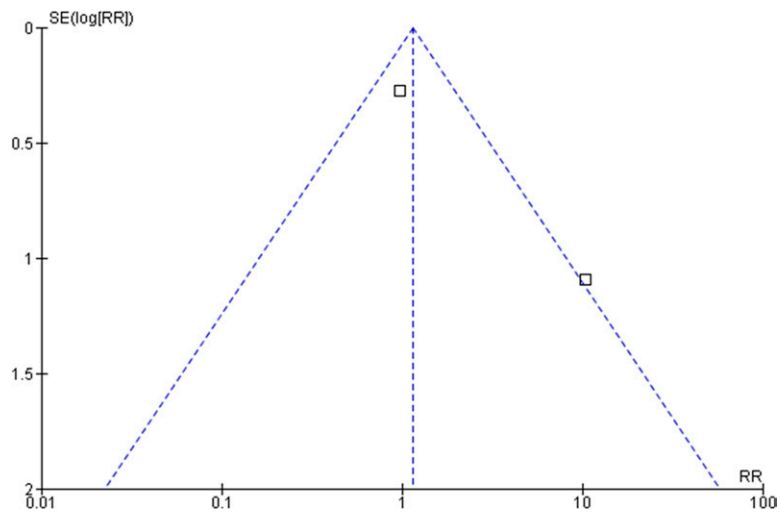
### SUPPLEMENTAL FIGURE 8

A, Funnel plot to Fig 2A. CP in preterm CCA patients. B, Funnel plot to Fig 2B. CP in mixed-term CCA patients.

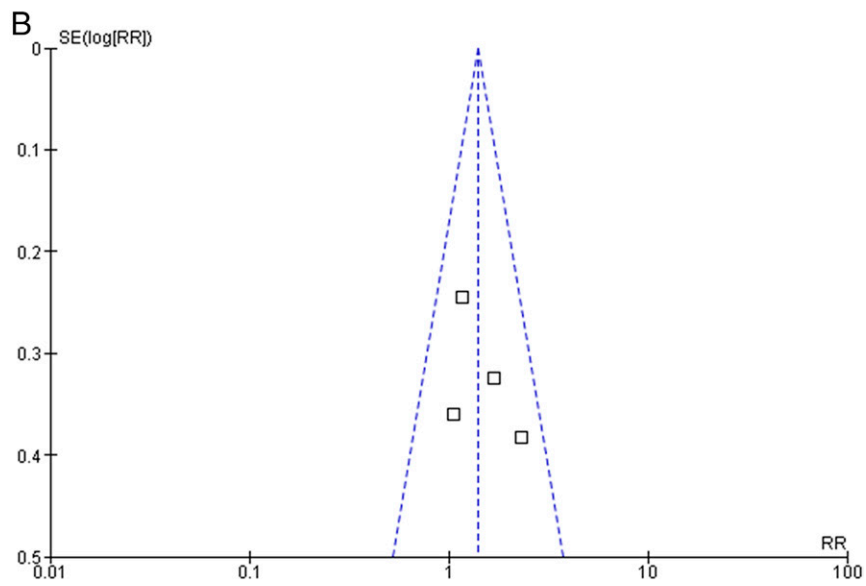
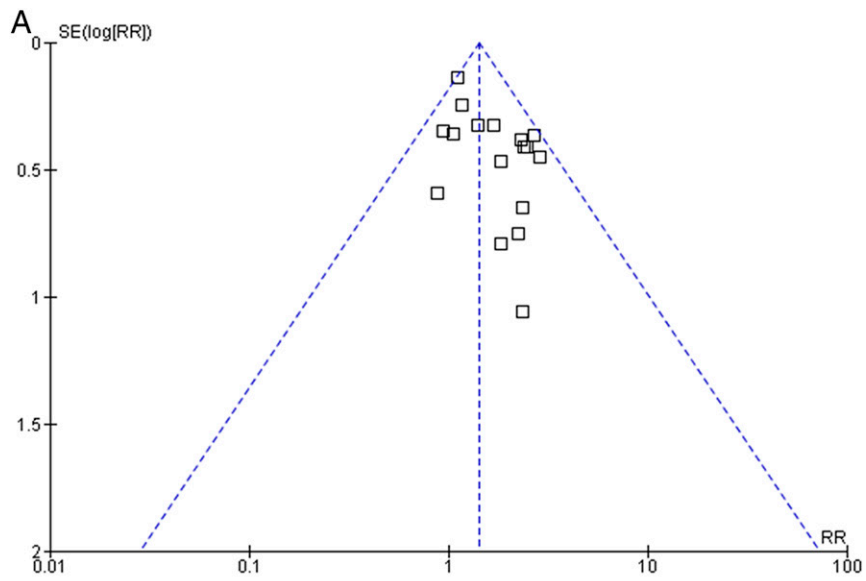


**SUPPLEMENTAL FIGURE 9**

A, Funnel plot to Fig 2C. CP in preterm HCA patients. B, Funnel plot to Fig 3A. CP in preterm HCA patients, prenatal steroids used.

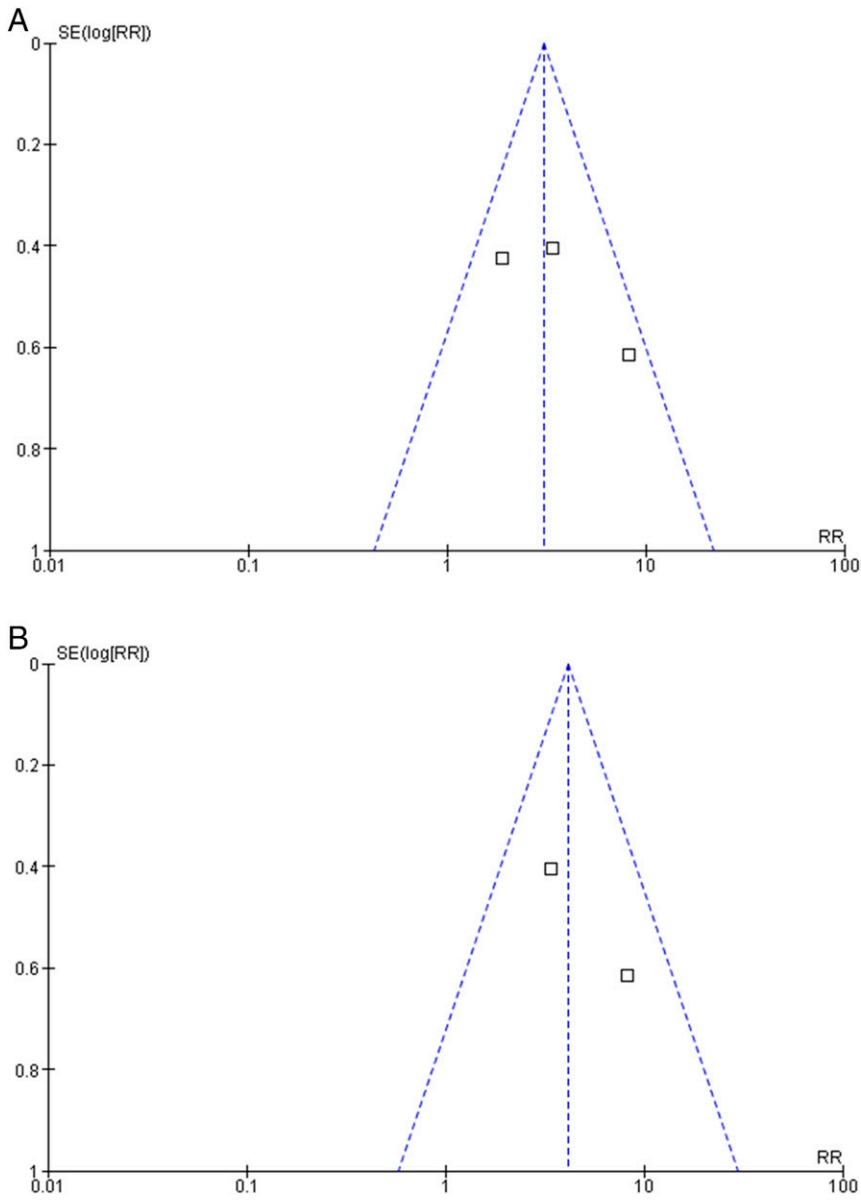
**SUPPLEMENTAL FIGURE 10**

A, Funnel plot to Fig 3B. CP in preterm HCA patients, no prenatal steroids used.



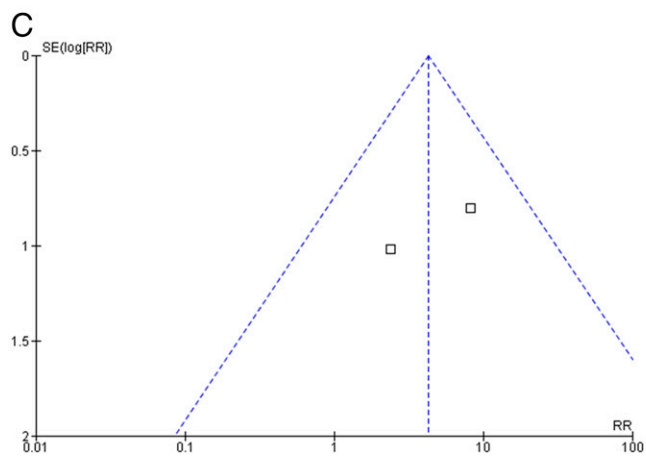
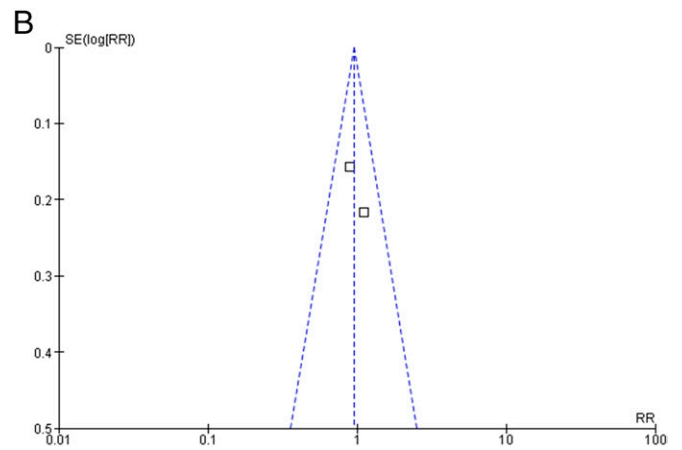
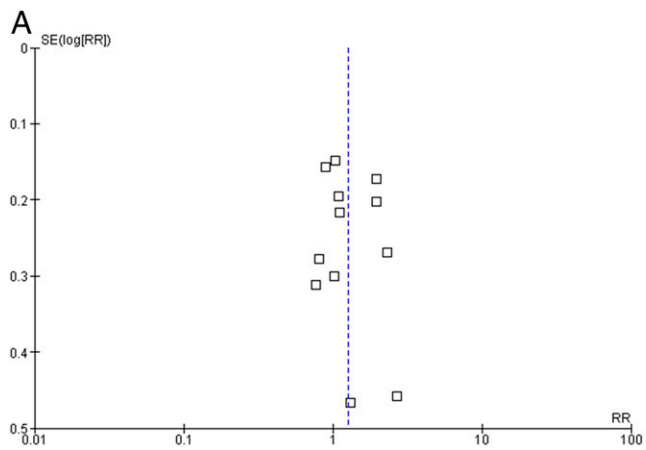
**SUPPLEMENTAL FIGURE 11**

A, Funnel plot to Fig 5A. CCA in preterm CP patients. B, Funnel plot to Fig 5B. CCA in preterm CP patients, postnatal CP excluded.



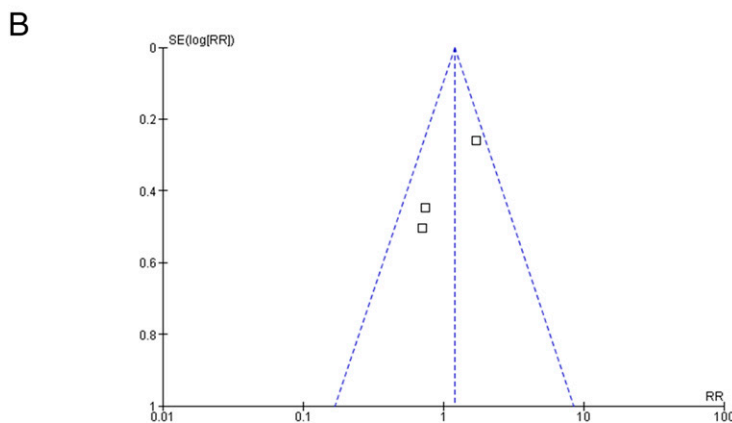
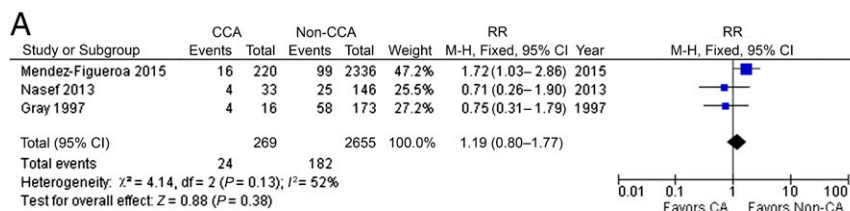
**SUPPLEMENTAL FIGURE 12**

A, Funnel plot to Fig 6A. CCA in term/near-term CP patients. B, Funnel plot to Fig 6B. CCA in term/near-term CP patients, postnatal CP excluded.



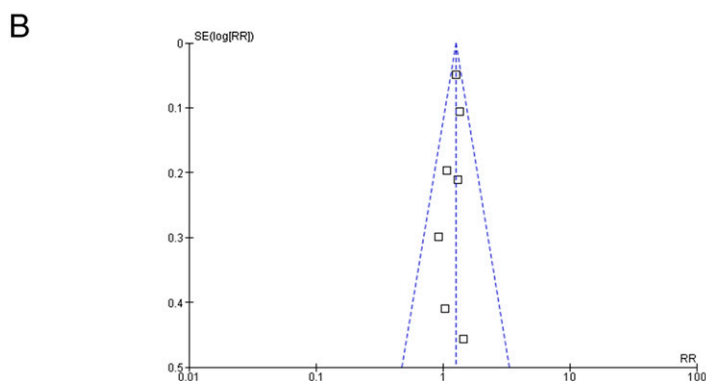
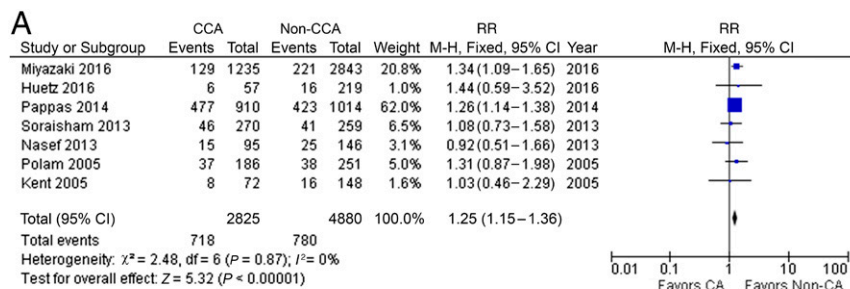
**SUPPLEMENTAL FIGURE 13**

A, Funnel plot to Fig 6C. HCA in preterm CP patients. B, Funnel plot to Fig 7A. HCA in preterm CP patients, postnatal CP excluded. C, Funnel plot to Fig 7B. HCA in term/near-term CP patients.



**SUPPLEMENTAL FIGURE 14**

A, Death before discharge in preterm CCA patients. B, Funnel plot to A. Death before discharge in preterm CCA patients.



**SUPPLEMENTAL FIGURE 15**

A, Death before discharge in preterm HCA patients. B, Funnel plot to A. Death before discharge in preterm HCA patients.