

Supplementary Information

Reduction in Migratory Phenotype in a Metastasized Breast Cancer Cell Line via Downregulation of S100A4 and GRM3

Andy Chen¹, Luqi Wang^{2,3}, Bai-Yan Li³, Jesse Sherman², Jong E. Ryu⁴, Kazunori Hamamura⁵, Yunlong Liu⁶, Harikrishna Nakshatri⁷, and Hiroki Yokota²

¹Weldon School of Biomedical Engineering, Purdue University, West Lafayette, IN 47907, USA

²Department of Biomedical Engineering, Indiana University Purdue University Indianapolis, Indianapolis, IN 46202, USA

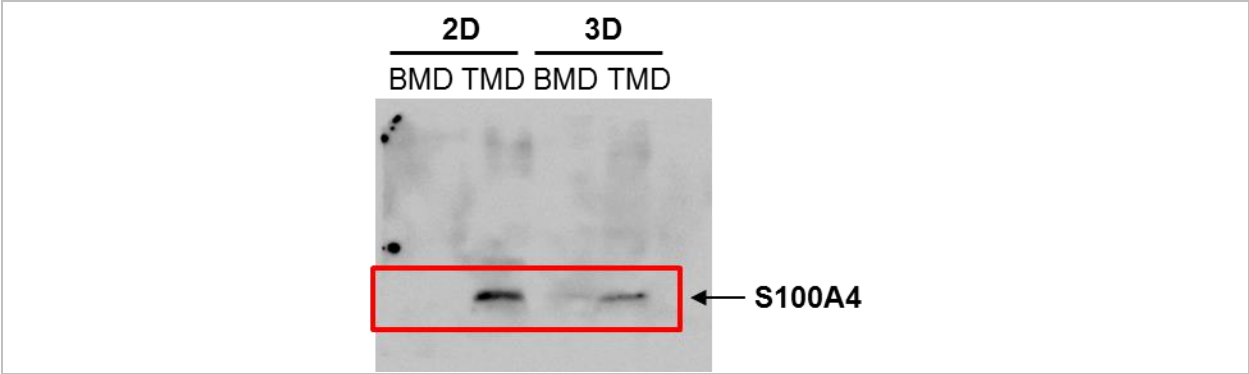
³Department of Pharmacology, School of Pharmacy, Harbin Medical University, Harbin 150081, China

⁴Department of Mechanical Engineering, Indiana University Purdue University Indianapolis, Indianapolis, IN 46202, USA

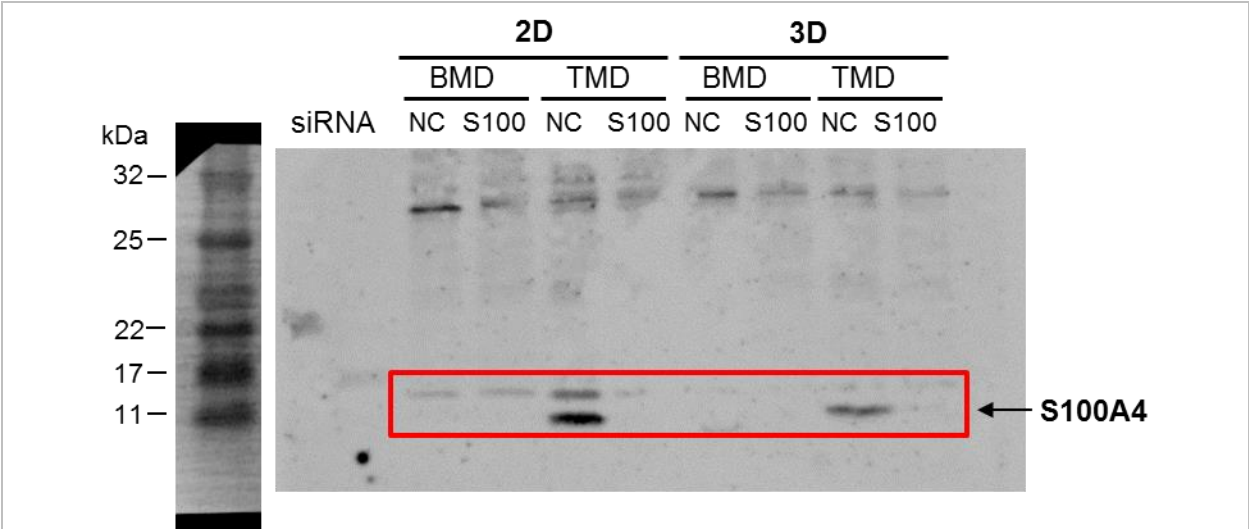
⁵Department of Pharmacology, School of Dentistry, Aichi-Gakuin University, Nagoya, Japan

⁶Department of Medical and Molecular Genetics, Indiana University School of Medicine, Indianapolis, IN, USA

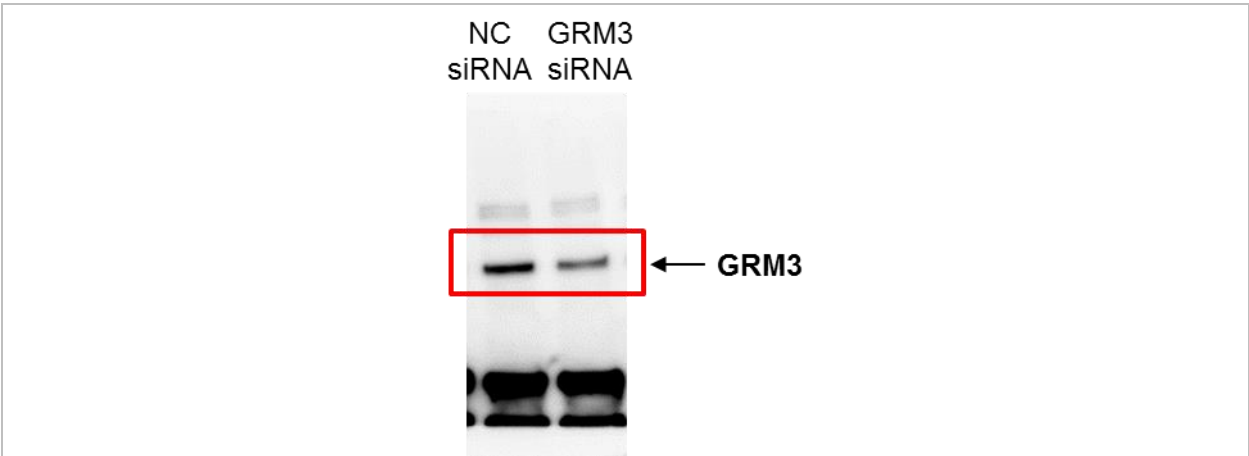
⁷Department of Surgery, Simon Cancer Research Center, Indiana University School of Medicine, Indianapolis, IN 46202, USA



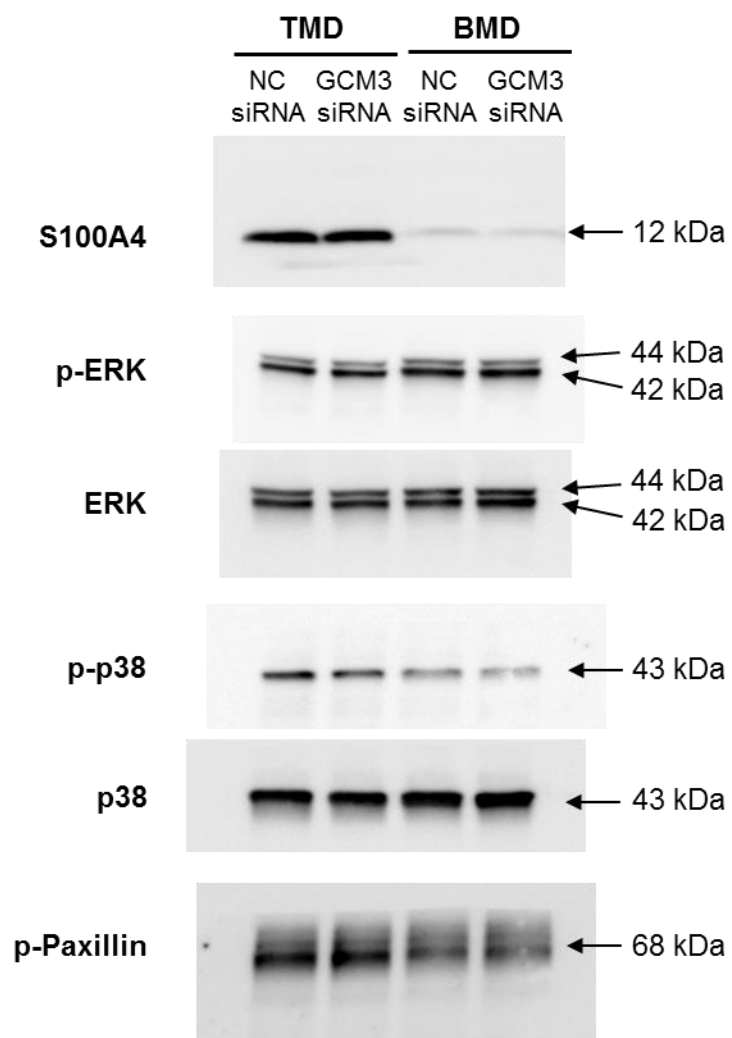
Supplementary Figure 1. Western blot gel image in Figure 2E.



Supplementary Figure 2. Western blot gel image in Figure 3B.



Supplementary Figure 3. Western blot gel image in Figure 4B.



Supplementary Figure 4. Western blot gel image in Figure 4G.