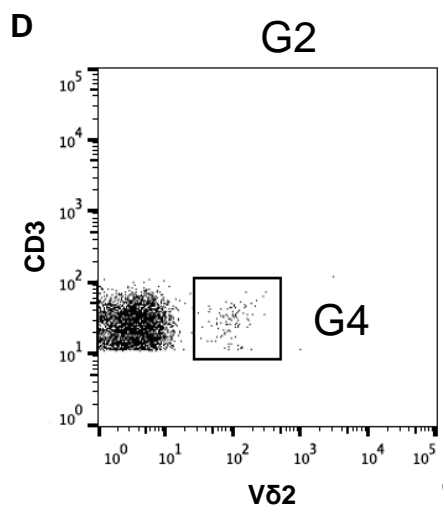
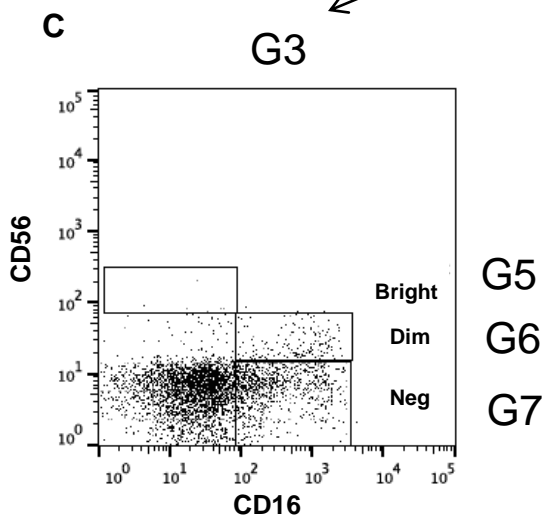
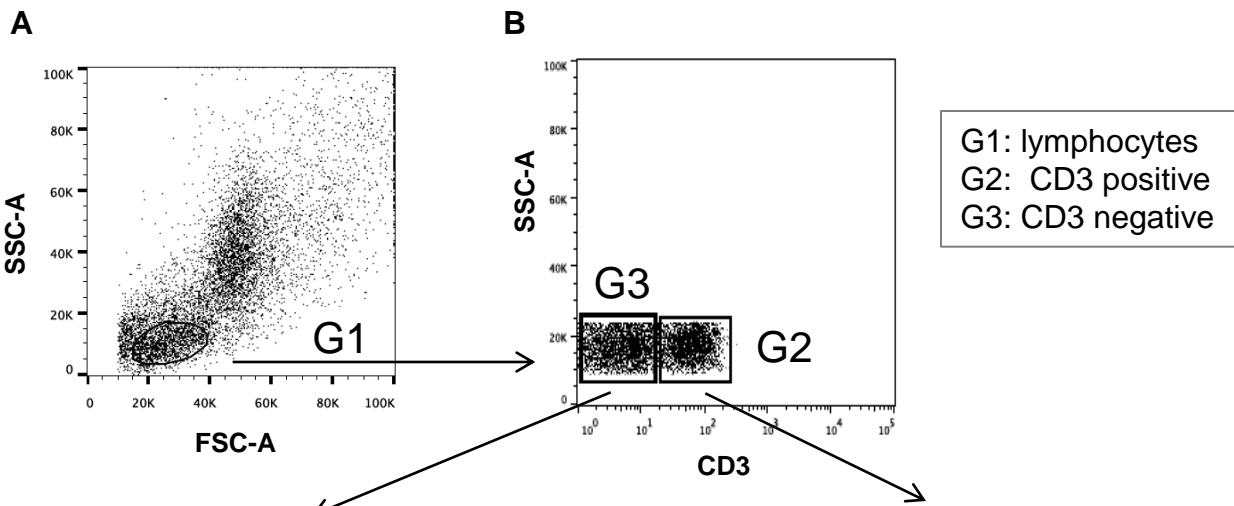


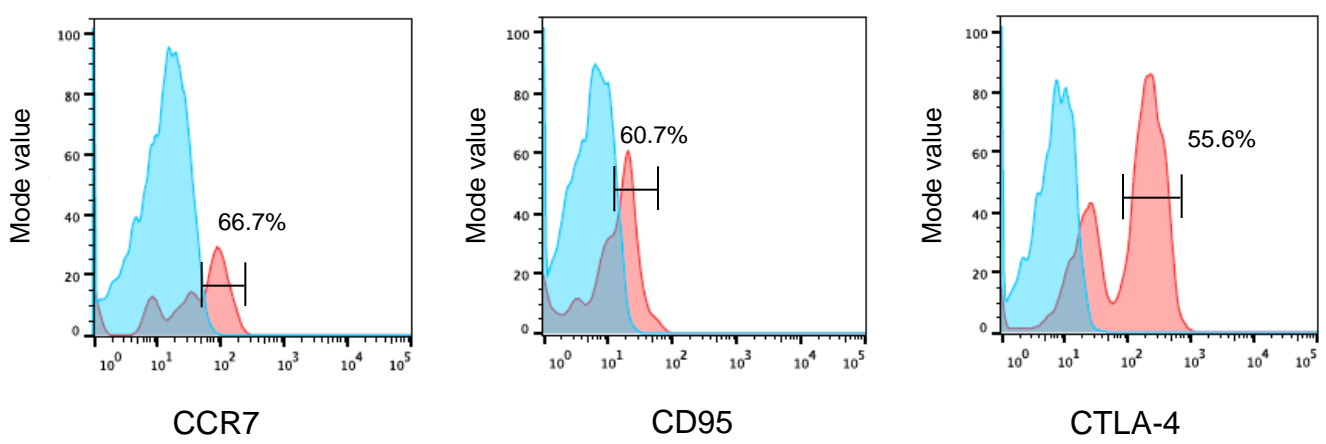
Gating strategy



G5: CD56 bright among CD3 neg
G6: CD56 dim among CD3 neg
G7: CD56 neg among CD3 neg

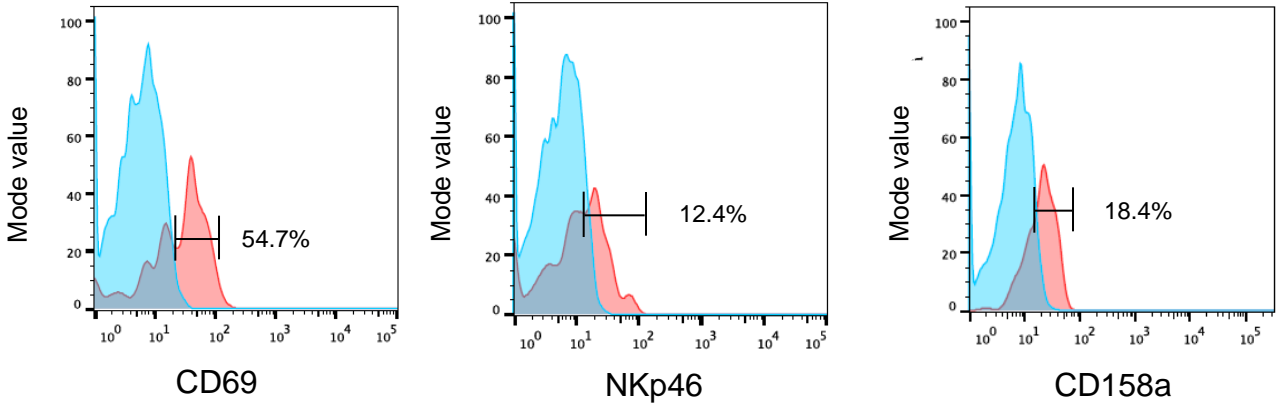
G4: Vδ2+ among CD3 T cells

E G4: Vδ2+/CD3+



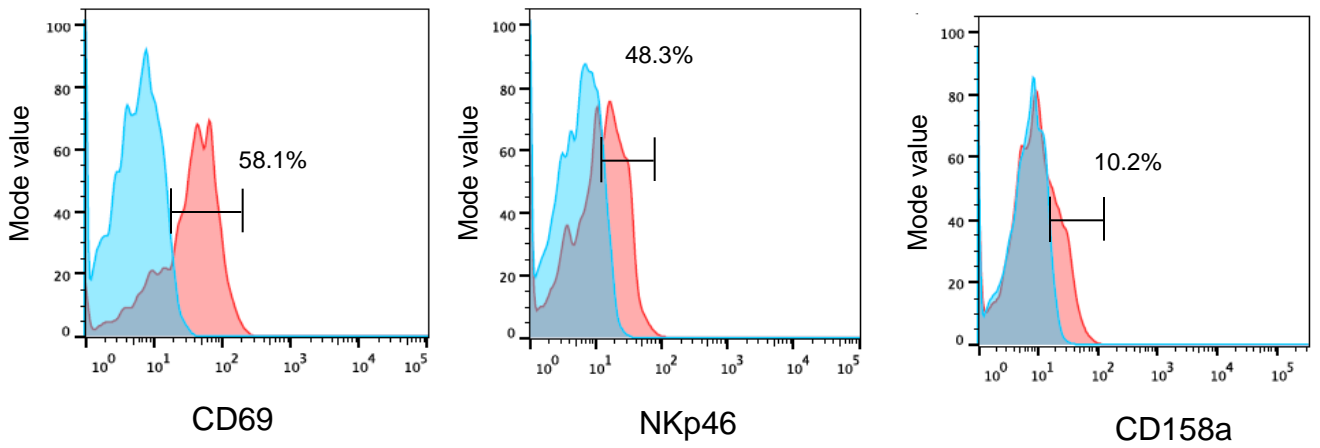
G6: CD56^{Dim}

F



G7: CD56^{neg}

G



Supplementary Data Figure 1. Gating strategy.

The following gates were used for data analysis:

- G1: Lymphocyte gate (Panel A);
- G2:CD3+ cells; G3: CD3- cells (Panel B);
- G4: V δ 2+ among G2 (Panel D);
- G5: CD56+CD16- NK cells among G3 (bright) ; G6: CD56+CD16+ NK cells among G3 (Dim), G7: CD56-CD16+ NK cells among G3 (Neg) (Panel C).
- The expression of CCR7, CD95 and CTLA4 was analyzed in G4 (Panel E);
- The expression of CD69, NK p46 and CD158a was evaluated in G6 and G7 (Panel F-G)