

# **Dengue virus activates cGAS through the release of mitochondrial DNA**

Bo Sun<sup>1,2</sup>, Karin B. Sundström<sup>1</sup>, Jun Jie Chew<sup>1</sup>, Pradeep Bist<sup>1</sup>, Esther S. Gan<sup>1</sup>, Hwee Cheng Tan<sup>1</sup>, Kenneth C. Goh<sup>1</sup>, Tanu Chawla<sup>1</sup>, \*Choon Kit Tang<sup>1</sup>, \*Eng Eong Ooi<sup>1,3,4,5</sup>

<sup>1</sup>Programme in Emerging Infectious Diseases, Duke-NUS Medical School, Singapore  
169857

<sup>2</sup>Duke University School of Medicine, Durham, NC, 27710 USA

<sup>3</sup>Department of Microbiology and Immunology, Yong Loo Lin School of Medicine,  
National University of Singapore, Singapore

<sup>4</sup>Saw Swee Hock School of Public Health, National University of Singapore, Singapore

<sup>5</sup>Singapore MIT Alliance in Research and Technology, Infectious Diseases  
Interdisciplinary Group, Singapore

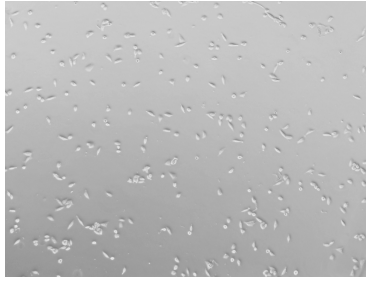
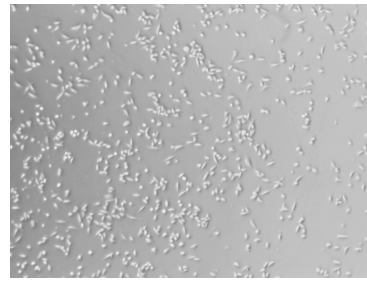
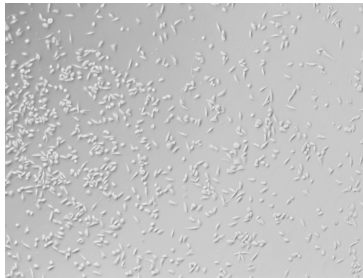
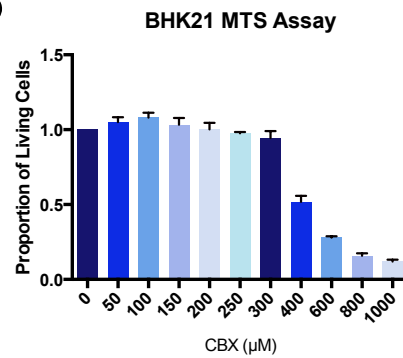
\*Correspondence to:

Choon Kit Tang ([cktang79@gmail.com](mailto:cktang79@gmail.com)) or

Eng Eong Ooi ([engeong.ooi@duke-nus.edu.sg](mailto:engeong.ooi@duke-nus.edu.sg))

**Supplementary Table S1. Sequences of RT-qPCR primers utilized.**

<b>Gene Target</b>	<b>Primer Sequence</b>
DENV LYL 3'UTR	Forward: TTGAGTAAACYRTGCTGCCTGTAGCTC Reverse: GAGACAGCAGGATCTCTGGTCTYTC
<i>HPRT</i> (BHK21)	Forward: GATAGATCCACTCCCATAACTG Reverse: TACCTTCAACAATCAAGACATTC
<i>CXCL10</i> (BHK21)	Forward: TCTGAATCCAGAGTCTGAGG Reverse: AGGGACAATTAGGAGTAGCC
<i>mtCOI</i> (human)	Forward: ATTCATCGGCGTAAATCTAA Reverse: AGGCTTCTCAAATCATGAAA
<i>mtND4</i> (human)	Forward: CCTCGTAGTAACAGCCATTC Reverse: TTGAAGTCCTTGAGAGAGGA
<i>mtCytB</i> (human)	Forward: CCATCCTCCATATATCCAAA Reverse: CCAATGATGGTAAAAGGGTA
<i>GAPDH</i> (human)	Forward: GAGTCAACGGATTTGGTCGT Reverse: TTGATTTTGGAGGGATCTCG

**S1** $2 \times 10^4$  cells/well**S2** $4 \times 10^4$  cells/well**S3** $6 \times 10^4$  cells/well**S4** $1.2 \times 10^5$  cells/well**S5**

**Supplementary Figures. (S1-4)** Representative images of  $2 \times 10^4$ ,  $4 \times 10^4$ ,  $6 \times 10^4$ ,  $1.2 \times 10^5$  BHK21 cells plated in a single well of a 24-well plate after overnight incubation. **(S5)** MTS assay performed for CBX treatment of BHK21 cells; CBX treatment performed for 3hrs at concentrations shown before removal of drug and further incubation of cells for 24hrs.