

Supplemental Material

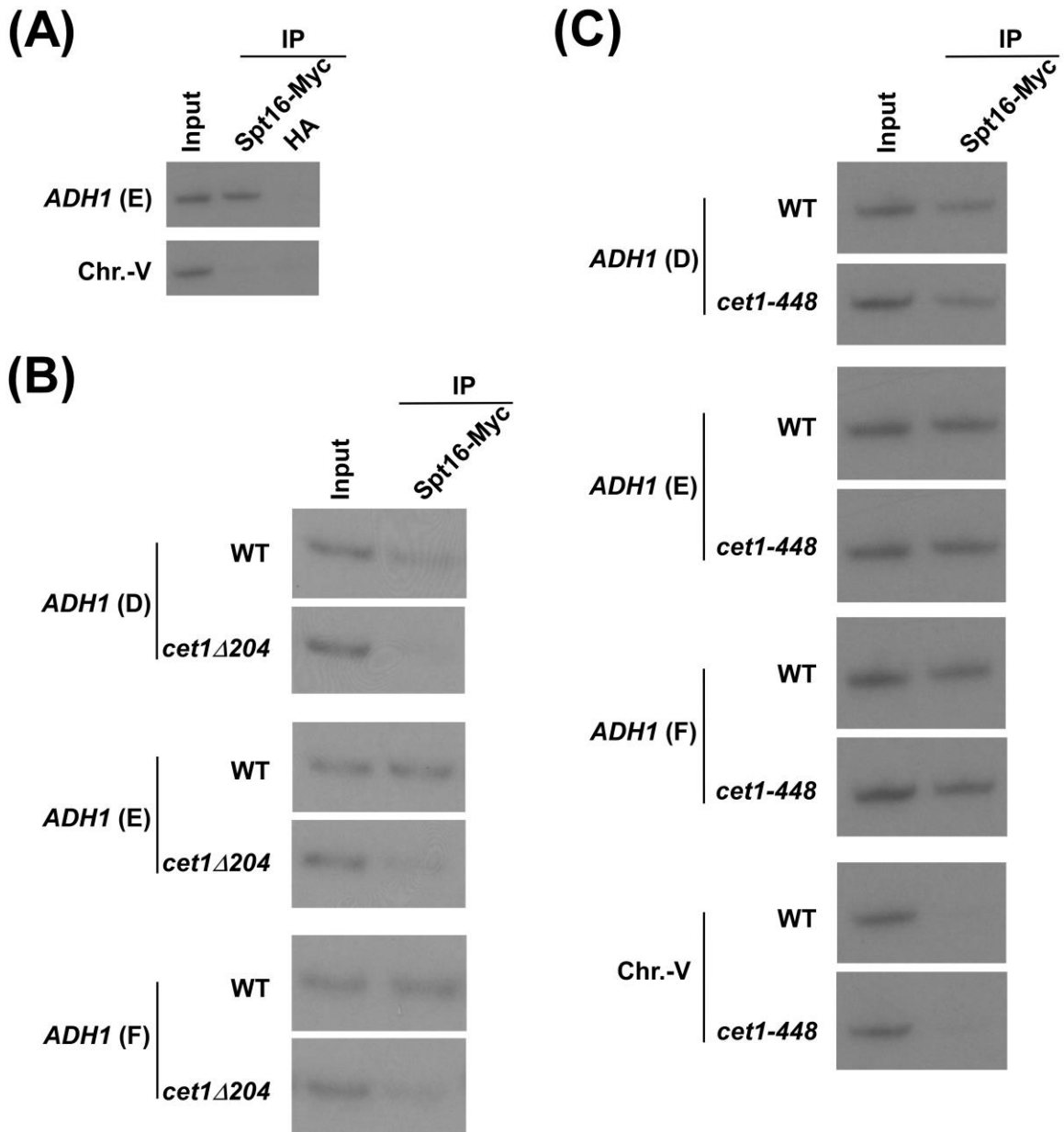
Figure legends:

Supplementary Figure S1: Cet1's NTD targets FACT to *ADH1*. **(A)** ChIP analysis of FACT (Spt16-Myc) recruitment to *ADH1*. Yeast cells expressing Myc epitope-tagged Spt16 were grown in YPD at 30° up to an OD₆₀₀ of 1.0 prior to formaldehyde-based *in vivo* cross-linking. Immunoprecipitation was carried out using an anti-Myc antibody against Myc-tagged Spt16. An anti-HA was used as a non-specific antibody. Immunoprecipitated DNA was analyzed by PCR using the primer pair targeted to the region E of *ADH1* (Figure 1A). An inactive region within Chr.-V was used as a non-specific DNA control. **(B)** ChIP analysis of FACT association with *ADH1* in the presence and absence of the NTD of Cet1. PCR analysis was performed at the regions D, E and F on *ADH1* (Figure 1A). **(C)** ChIP analysis of FACT at *ADH1* in *cet1-ts (cet1-448)* mutant and its isogenic wild type equivalent. Both wild type and mutant cells were grown in YPD at 30° up to an OD₆₀₀ of 0.85, and then switched to 37° for 90 min prior to cross-linking.

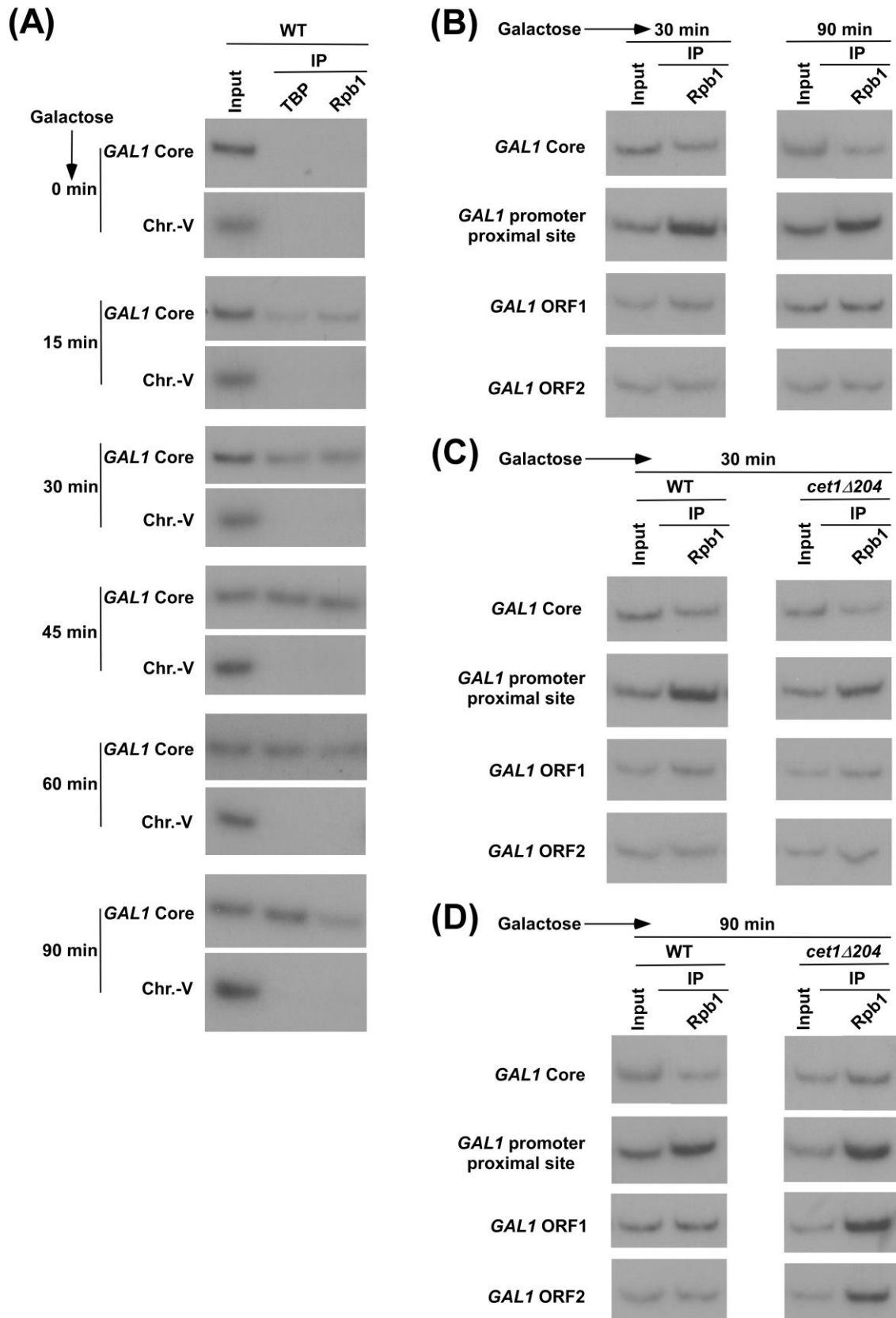
Supplementary Figure S2: Analysis of Cet1's NTD function in regulation of the levels of TBP and pol-II at *GAL1*. **(A)** ChIP analysis of TBP and pol-II (Rpb1) at the *GAL1* core promoter after switching on *GAL1* transcription in galactose-containing growth medium. Chr.-V was used as a non-specific DNA control. **(B)** ChIP analysis of Rpb1 association with *GAL1* (Figure 1F) following 30 and 90 min transcriptional induction in galactose-containing growth medium. **(C and D)** ChIP analysis of Rpb1 association with *GAL1* in the presence and absence of Cet1's NTD following 30 and 90 min transcriptional induction in galactose-containing growth medium.

Supplementary Figure S3: Growth analysis of yeast strains with or without Myc epitope tag in solid media. **(A)** Growth analysis of yeast strains with or without Myc epitope tags to the C-terminal ends of Spt16 and Paf1. **(B)** Growth analysis of yeast strains with or without Myc epitope tags to the C-terminal ends of Spt5 and Spt6. YPD, yeast extract, peptone plus dextrose.

Supplementary Figure S1:

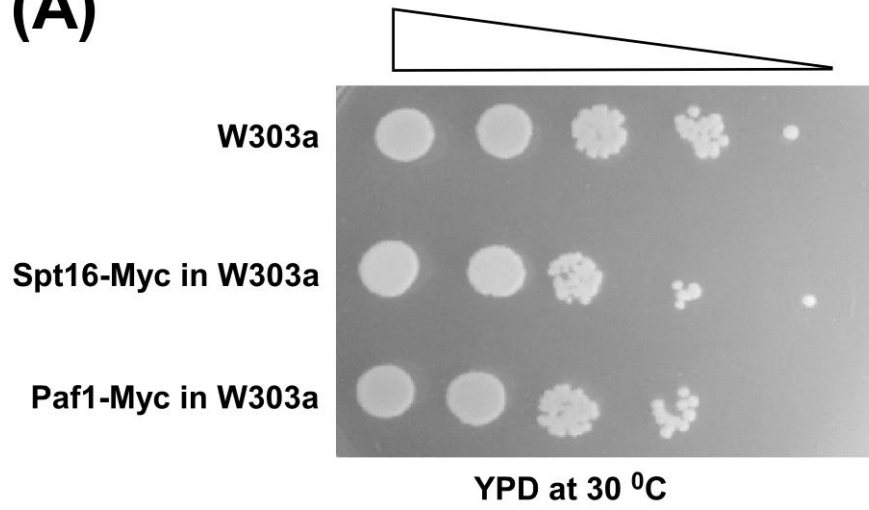


Supplementary Figure S2:



Supplementary Figure S3:

(A)



(B)

