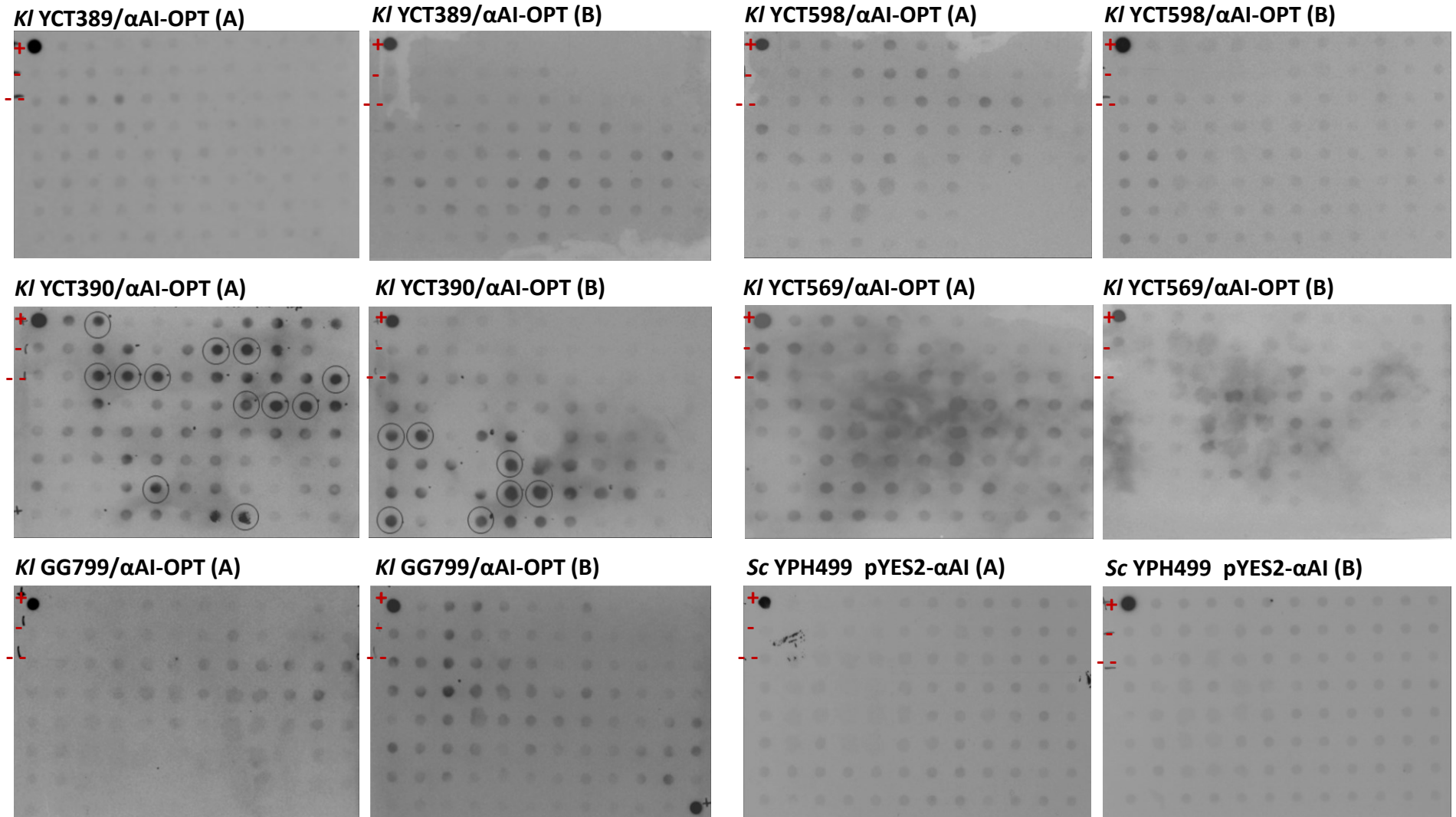


# Figure S2



**Figure S2: Antibody dot blot screening of culture supernatants of *K. lactis* and *S. cerevisiae* with  $\alpha$ AI-OPT.** Cleared supernatants of transformed colonies of *K. lactis* strains YCT389, YCT390, YCT569, YCT589 and GG799, and *S. cerevisiae* YPH499 transformed with  $\alpha$ AI-OPT gene. (+) Pure Pinto- $\alpha$ AI (200 ng) used as positive control (+). As negative controls, cleared culture supernatant (200  $\mu$ L) of untransformed strain YCT390 (-) and culture media YPCGal (200  $\mu$ L) without cells (- -). Circled dots correspond to dots with a signal intensity equivalent to that of positive control.