

Figure S3

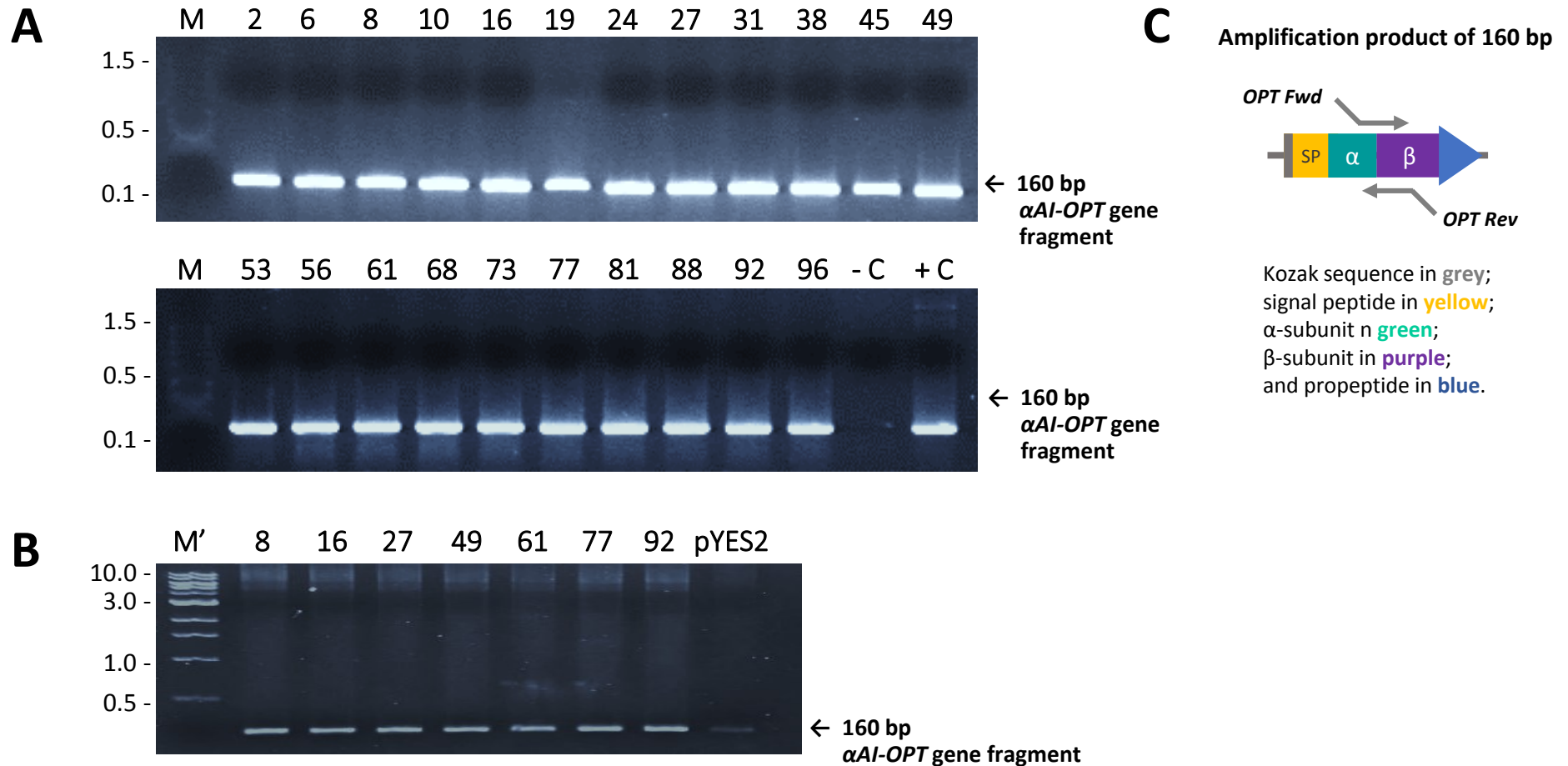


Figure S3: Genetic analysis of *S. cerevisiae* YPH499 clones with α AI-OPT. (A) Colony PCR of random colonies of *S. cerevisiae* YPH499 transformed with α AI-OPT (primers *OPT Fwd*/*OPT Rev*). Purified water used as PCR negative control (-C) and plasmid DNA from pYES2- α AI-OPT used as positive control (+C). DNA Ladder 100 bp NEB® (M). (B) PCR determination of α AI-OPT gene on plasmid DNA isolated from transformants of *S. cerevisiae* YPH499 with α AI-OPT (primers *OPT Fwd*/*OPT Rev*). (C) Schematic representation of amplification product with primers *OPT Fwd*/*OPT Rev*. Plasmid DNA from parent strain transformed with empty plasmid (pYES2) used as negative control. DNA Ladder 1 Kb Promega™ (M').