

Figure S4

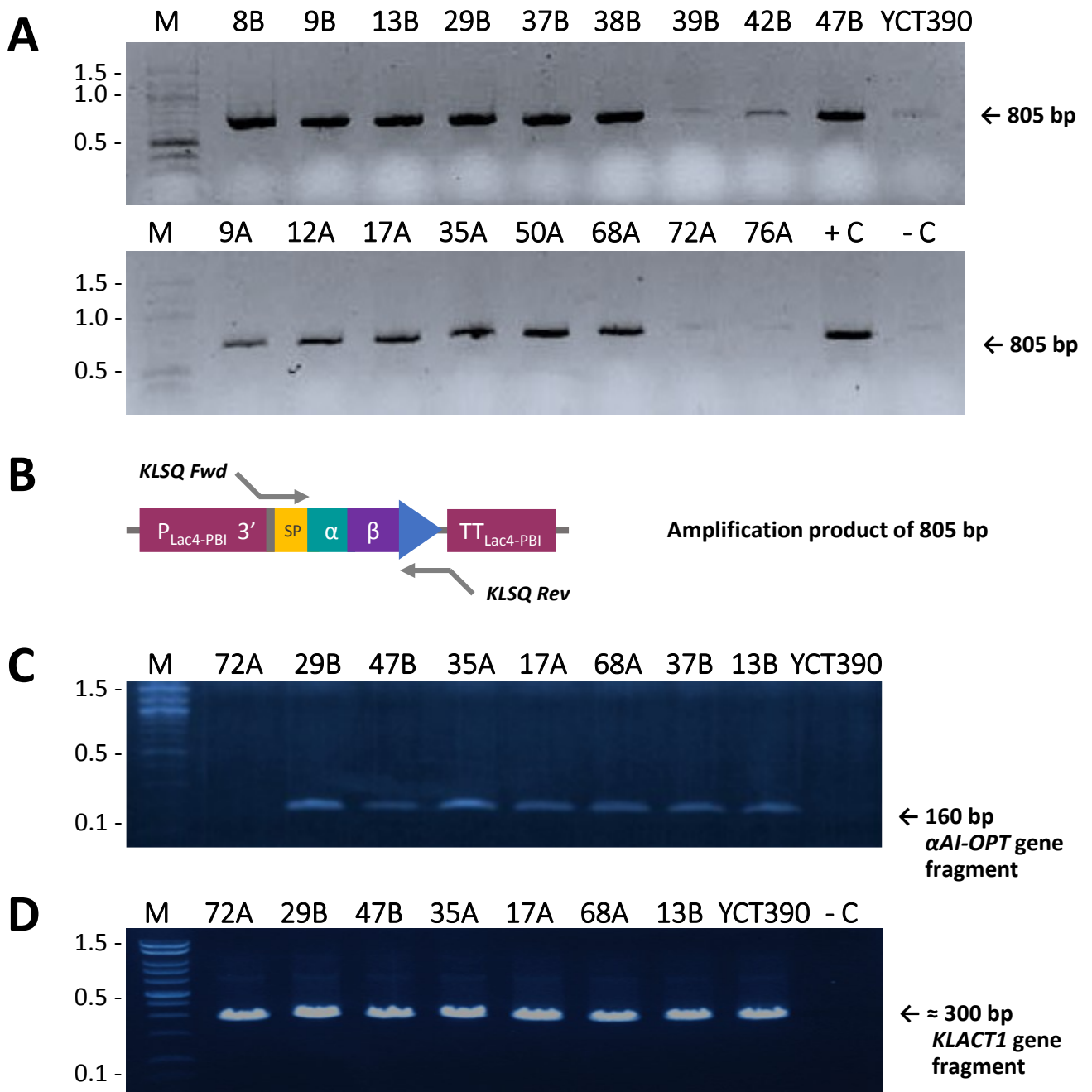


Figure S4: Genetic analysis of *K. lactis* YCT390 transformants with α AI-OPT. (A) Indirect determination by PCR of α AI-OPT gene inserted into pKLAC2 using sequencing primers *KLSQ Fwd*/*KLSQ Rev* in transformants of *K. lactis* YCT390 8B, 9B, 13B, 29B, 37B, 38B, 39B, 42B, 47B, 9A, 12A, 17A, 35A, 50A, 68A, 72A and 76A. (B) Schematic representation of amplification product (805 bp) with primers *KLSQ Fwd*/*KLSQ Rev*. PCR determination of (C) α AI-OPT gene fragment with primers *OPT Fwd*/*OPT Rev*, and (D) *KLACTION1* gene fragment (single copy gene in *K. lactis* genome) with primers *KLACTION1 Fwd*/*KLACTION1 Rev*, in transformants of *K. lactis* YCT390 13B, 29B, 37B, 47B, 17A, 35A and 68A. Genomic DNA from untransformed strain YCT390 used as negative control. Purified water used as PCR negative control (- C) and plasmid DNA from pKLAC2- α AI-OPT used as PCR positive control (+ C). DNA Ladder 100 bp NEB® (M).