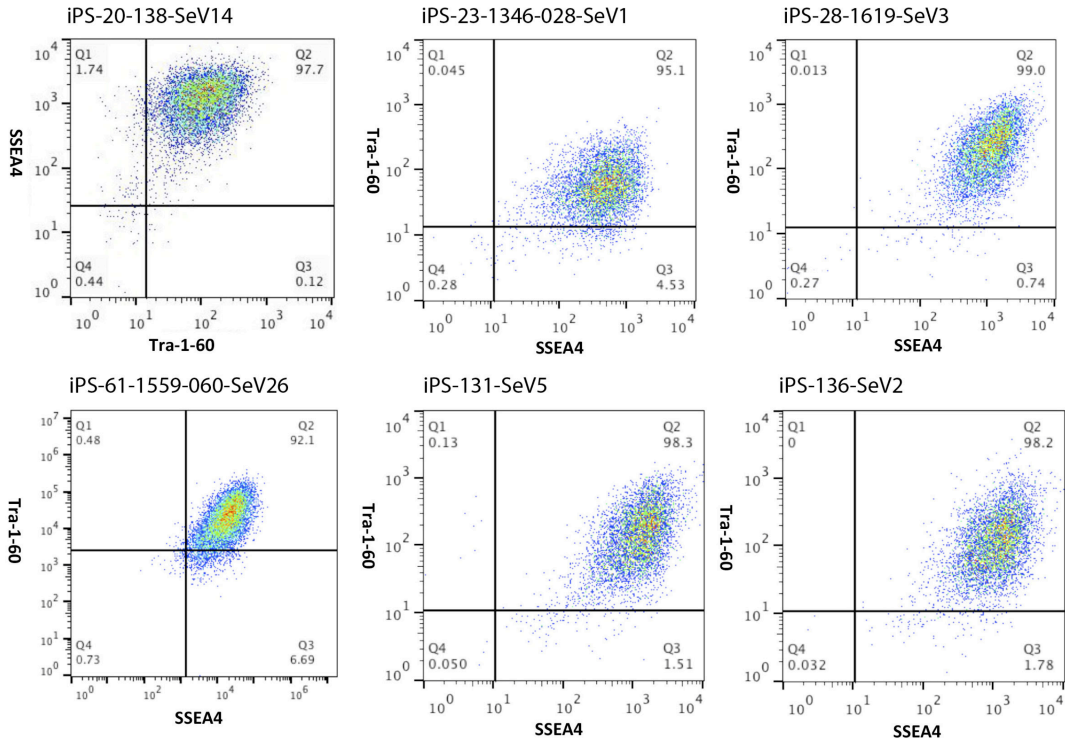
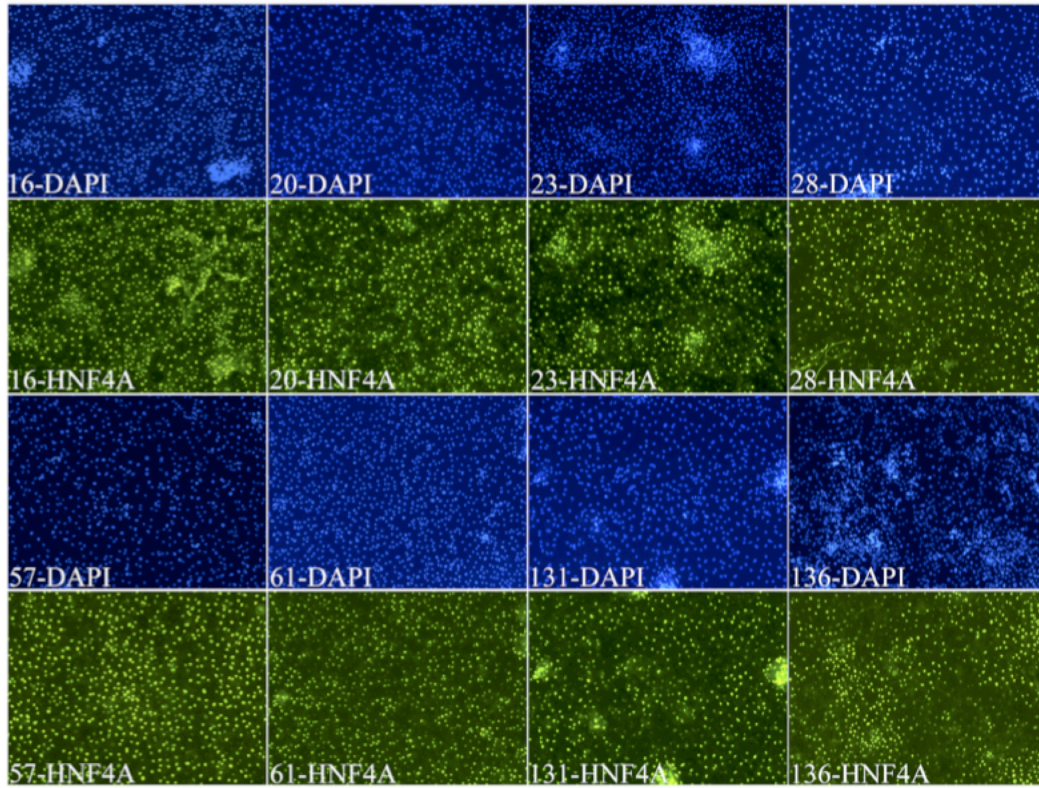


Figure S1

A



B

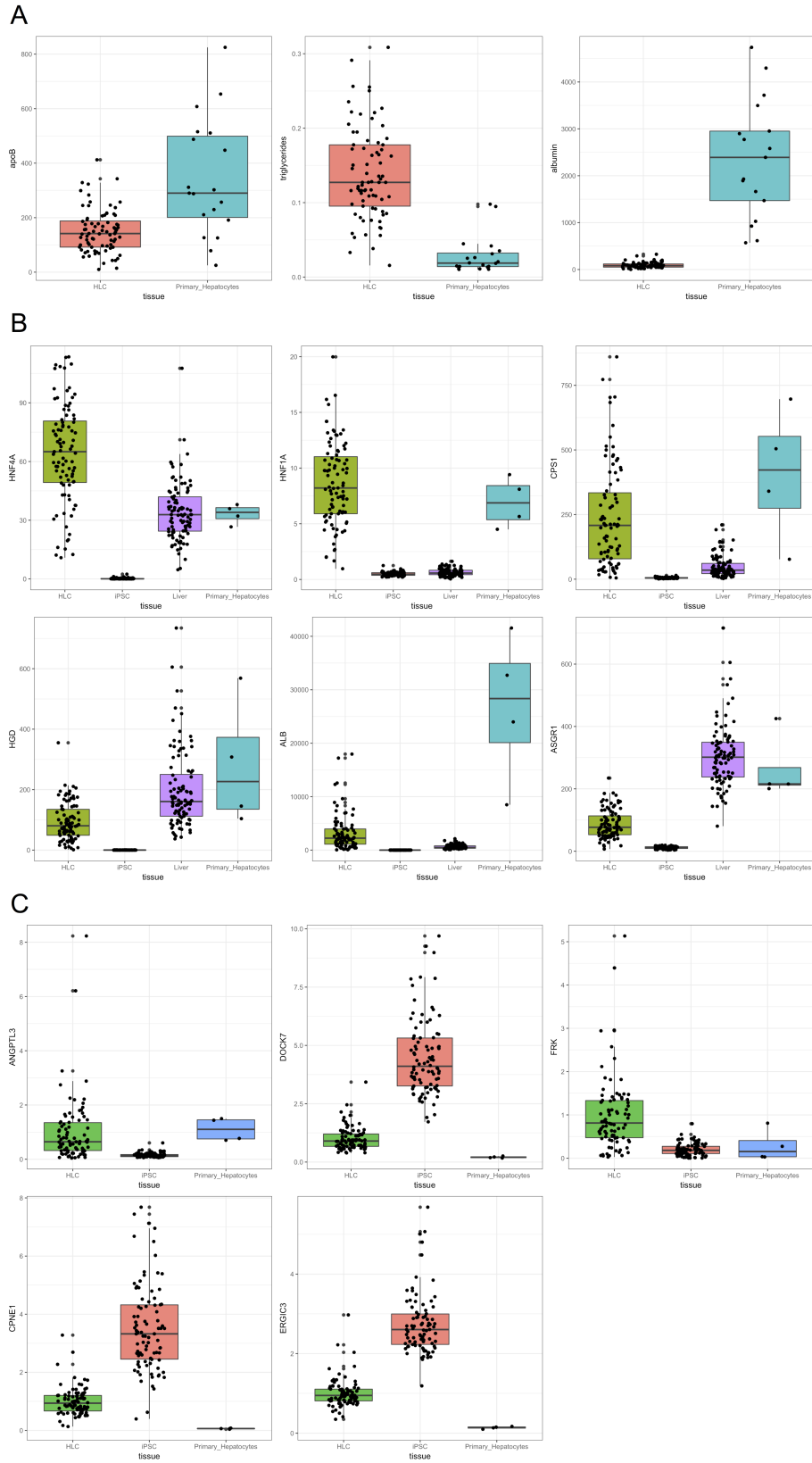


**Figure S1. Representative FACS analyses of pluripotency markers of iPSCs and expression and secretion analyses of HLCs, Related to Figure 1**

(A) Fluorescence-activated cell sorting plots for SSEA4 and Tra-1-60 positivity for a representative subset of iPSC lines.

(B) DAPI and immunostaining for HNF4 $\alpha$  for a representative subset of HLC samples.

Figure S2



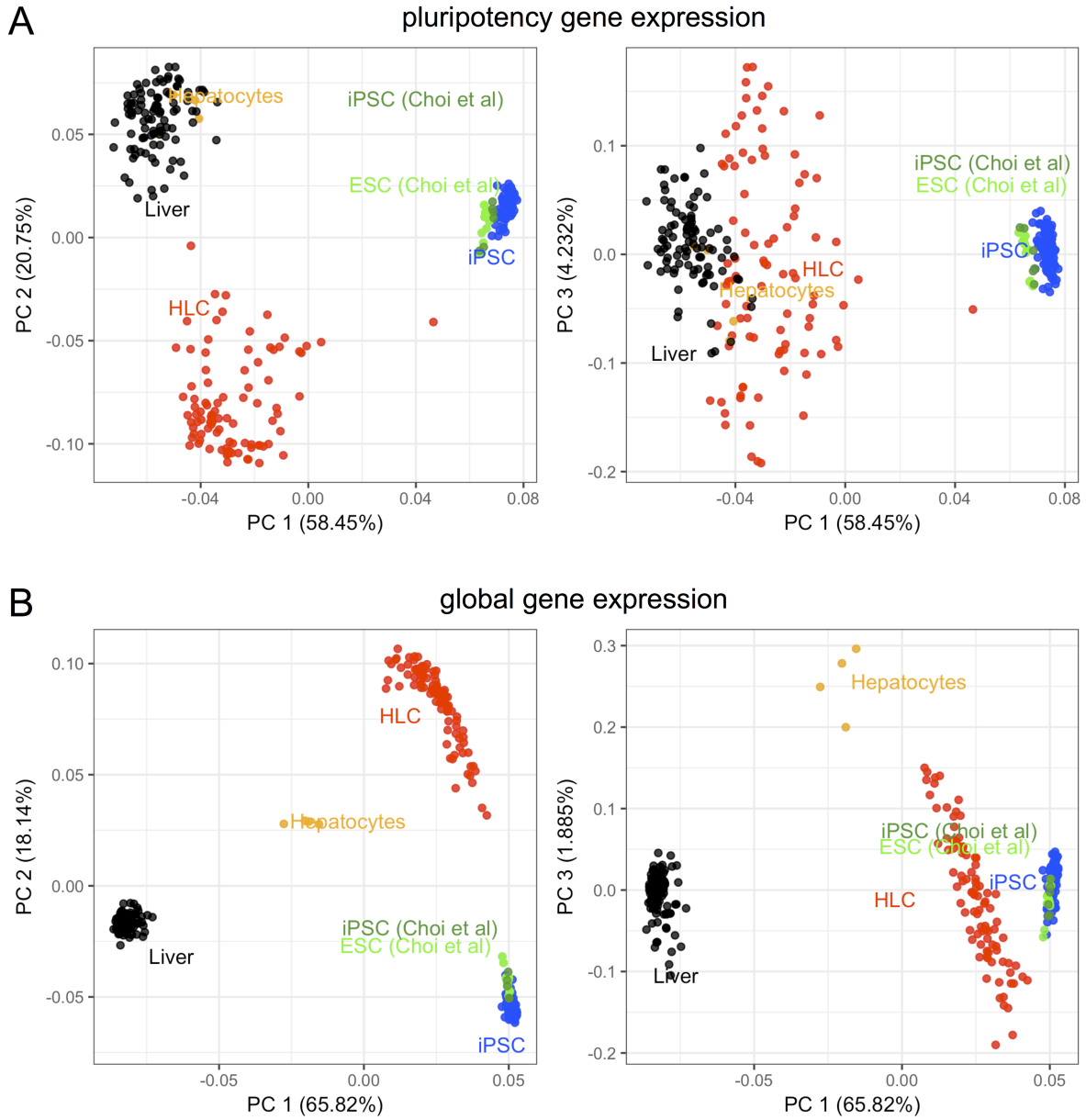
**Figure S2. Secretion of hepatocyte-specific products and expression levels of hepatocyte-specific and other key genes, Related to Figure 1**

(A) Secretion of apoB (ng/mL), triglycerides ( $\mu\text{g}/\mu\text{L}$ ), and albumin (ng/mL) by HLC samples and primary human hepatocytes.

(B) Expression of hepatocyte-specific genes (in TPMs) in HLCs, iPSCs, GTEx livers, and primary human hepatocytes.

(C) Expression of key genes studied in this work in HLCs, iPSCs, and primary human hepatocytes, as assessed by qRT-PCR and normalized to the mean expression levels in HLCs.





**Figure S3. Principal component analyses of gene expression levels in iPSCs, ESCs, HLCs, primary hepatocytes, and GTEx livers, Related to Figure 1**

(A) Principal component analysis of pluripotency gene expression (genes from Carcamo-Orive et al., 2016). ESCs and one set of iPSCs are from Choi et al. (2015).

(B) Principal component analysis of global gene expression.