

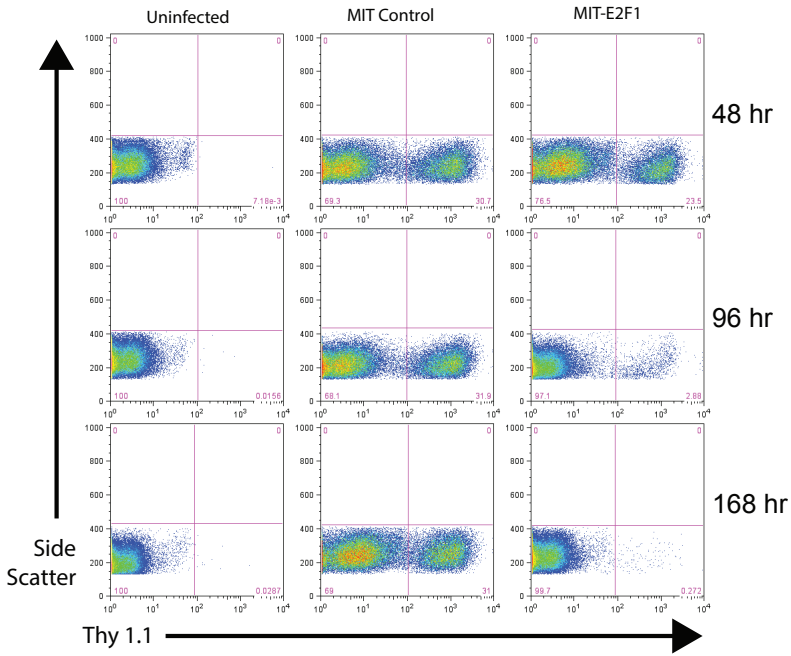
1 SUPPLEMENTAL FIG 1 Ectopic expression of E2F1 induces apoptosis in cultured BN cells (A)  
2 Schematic of retroviral vector encoding E2F1. (B) E2F1-infected cells do not persist over time. Shown  
3 are representative flow cytometry plots of BN cells after infection with control or MIT-E2F1 retroviral  
4 vectors. Number of hours on right indicate time elapsed from infection to analysis. (C) Quantification  
5 of frequencies of Thy1.1-positive cells from three independent biological replicates of the experiment  
6 shown in panel B. (D) E2F1 induces apoptosis in infected BN cells. 48 hr after infection with control  
7 or MIT-E2F1 retroviral vectors, apoptosis was determined using a flow cytometric TUNEL assay. Y-  
8 axis shows % Thy1.1+ cells (left panels) or % TUNEL+ cells as determined by Apo-BrDU-Red  
9 staining. (E) Quantification of three independent biological replicates of the experiment shown in D.  
10  
11  
12 SUPPLEMENTAL FIG 2 (A) Increased PU.1 association (dotted box) with the *Evl* gene that encodes  
13 miR-342 (arrowhead). (B) qPCR analysis of miR-342 mRNA transcript levels 72 hr after PU.1  
14 induction by Dox. Shown is fold induction from three independent biological replicate experiments.  
15 (C) Increased PU.1 association (dotted box) with the miR-322 cluster (arrowheads). Asterisk means  
16 significantly induced.

# Supplemental Figure 1

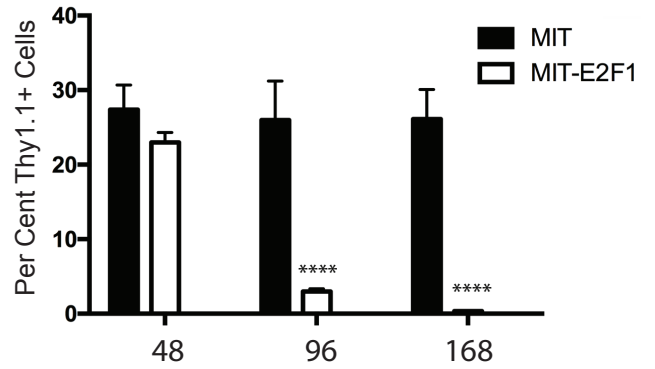
**A**



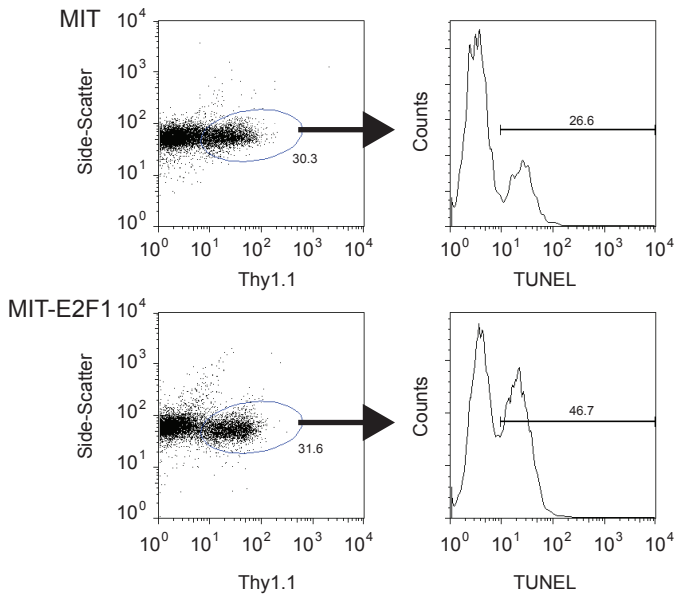
**B**



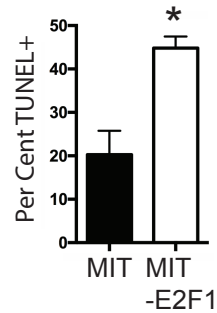
**C**



**D**



**E**



# Supplemental Figure 2

