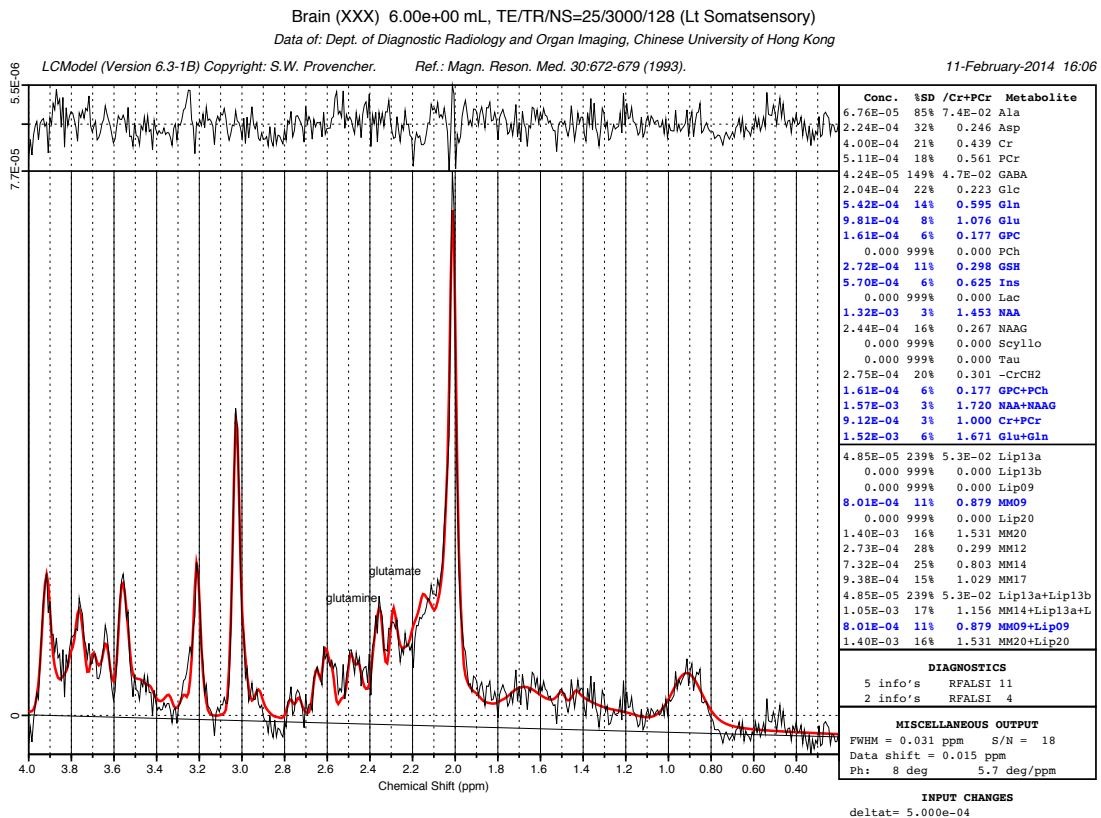


## Supplementary Information

### Title: Increased Glutamate in Somatosensory Cortex in Functional Dyspepsia

Lead author: Arthur DP Mak

Co-authors: Georg Northoff, David KW Yeung, Winnie CW Chu, Steve CN Hui, Cynthia Cheung, Jessica Ching, Linda Lam, Sing Lee, Justin Wu



## Suppl S1

### Typical MRS spectra of a patient with FD-PDS

**Suppl S2. Comparison of Regional GM/WM Ratio and Menstrual Phase between Patients with FD-PDS and Healthy Controls**

	FD-PDS	Control	<i>P</i>
<b>GM/WM ratio</b>			
Left SSC	1.19(0.48)	1.13(0.22)	0.62
Bilateral pgACC	6.12(1.75)	5.27(1.46)	0.14
Left insula	2.13(0.47)	2.11(0.51)	0.91
<b>FWMH</b>			
Left SSC	0.04(0.01)	0.04(0.01)	0.72
Bilateral pgACC	0.04(0.01)	0.04(0.01)	0.49
Left insula	0.05(0.01)	0.05(0.01)	0.07
<b>Menstrual phase</b>			
Menstrual phase, no. of subjects( %)			0.78
follicular phase	6(35.3)	5(29.4)	
luteal phase	5(29.4)	4(23.5)	
menopausal	6(35.3)	8(47.1)	

- $p < 0.05$

**Suppl S3. DSM-IV TR anxiety and depressive diagnoses of FD-PDS subjects**

9 subjects met criteria for an anxiety disorder

1 subject met criteria for Generalized anxiety disorder, social phobia and panic disorder with agoraphobia

1 subject met criteria for social phobia only

1 subject met criteria for agoraphobia without panic disorder

6 subjects met criteria for Generalized Anxiety Disorder

3 subjects met criteria for depressive and related disorders

2 subjects met criteria for a current Major Depressive Disorder

1 subject met criteria for Dysthymia.

**Suppl S4** Partial Correlation of SSC Glutamate with FD variables controlled separately for Depression (MADRS) and Anxiety (HAMA)

		Control variables	
		MADRS	HAMA
postprandial distress duration	r	0.64 *	0.32
	BCa95% CI	0.19-0.78 <sup>+</sup>	-0.02-0.68
Frequency of postprandial fullness	r	0.48 *	0.24
	BCa95% CI	0.11-0.75 <sup>+</sup>	-0.14-0.64
Frequency of early satiety	r	0.26	0.02
	BCa95% CI	-0.21-0.65	-0.44-0.63
Frequency of epigastric pain	r	0.38	-0.11
	BCa95% CI	-0.004-0.62	-0.67-0.57
Global symptom distress	r	0.29	0.29
	BCa95% CI	-0.19-0.67	-0.15-0.64

\* $p < 0.05$

<sup>+</sup>BCa 95%CI not including zero

Legend: BCa 95% CI: Bias corrected accelerated 95% confidence interval