

Supplementary Material

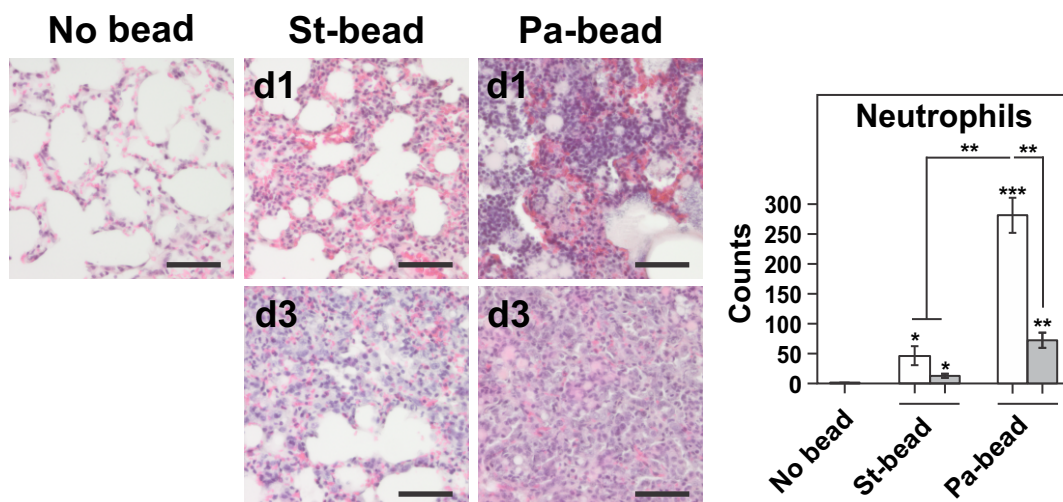
Biofilm-induced type 2 innate immunity in a cystic fibrosis model of *Pseudomonas aeruginosa*

Kenny Bielen^{1,2}, Bart 'S Jongers¹, Jan Boddaert¹, Tom K Raju¹, Christine Lammens², Surbhi Malhotra-Kumar², Philippe G Jorens³, Herman Goossens², Samir Kumar-Singh^{1,2*}

*Correspondence:

Corresponding author mailing address: Prof. dr. S. Kumar-Singh, MD, PhD, Molecular Pathology Group, Laboratory of Cell Biology and Histology, Faculty of Medicine and Health Sciences – D.T.1.32, University of Antwerp, Universiteitsplein 1, B-2610 Wilrijk, Belgium. Phone: 32-3-265-3329. E-mail: samir.kumarsingh@uantwerpen.be

SI Figure 1. Neutrophil infiltration in sterile bead and Pa-bead instilled animals



Representative images for H&E stained sections showing neutrophil infiltration for control animals (No bead), sterile agar (St-) bead instilled animals and *P. aeruginosa* loaded (Pa-) bead instilled animals showing increased influx of neutrophils on H&E stain. Scale bar represents 60 μ m. Data is presented as averages \pm SEM, n = 4 - 6 animals per group. Asterisk above the vertical bars denotes significance against No bead control group.