

Biophysical Journal, Volume 112

Supplemental Information

Actin Filament Strain Promotes Severing and Cofilin Dissociation

Anthony C. Schramm, Glen M. Hocky, Gregory A. Voth, Laurent Blanchoin, Jean-Louis Martiel, and Enrique M. De La Cruz

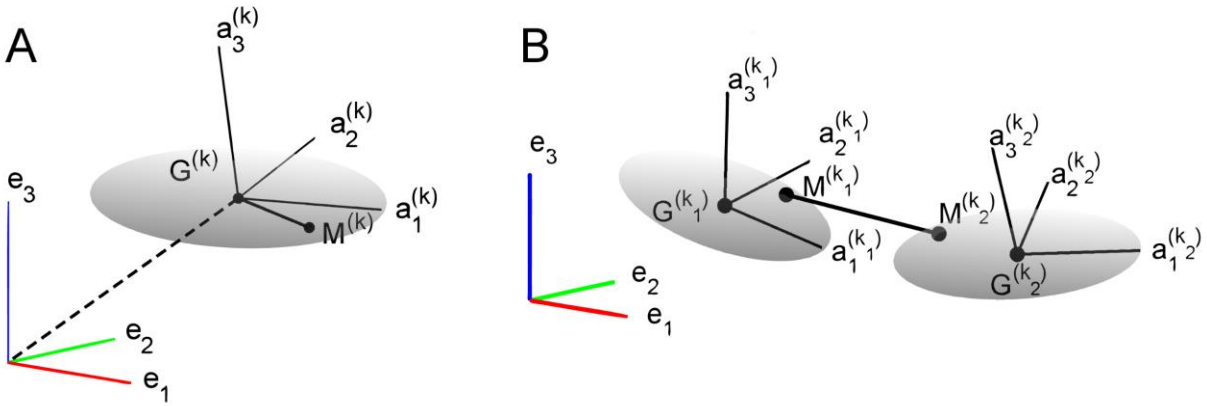


FIGURE S1 A) Depiction of the mass center $\mathbf{G}^{(k)}$ vector and local reference frame vectors $\mathbf{a}^{(k)_1}$, $\mathbf{a}^{(k)_2}$, and $\mathbf{a}^{(k)_3}$ of protein k , as well as the vector from the mass center to the protein surface at point $\mathbf{M}^{(k)}$. B) Depiction of a bond between the surface points $\mathbf{M}^{(k_1)}$ and $\mathbf{M}^{(k_2)}$ of proteins k_1 and k_2 .