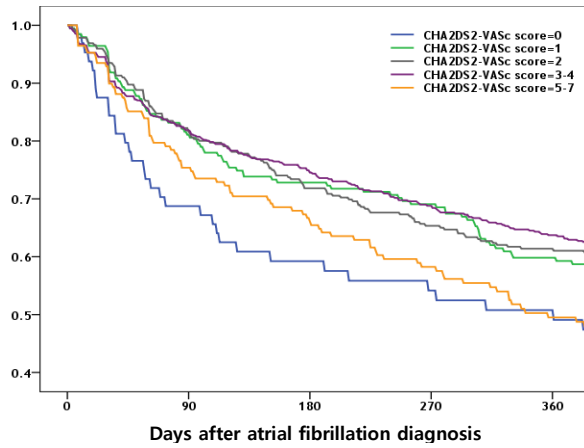
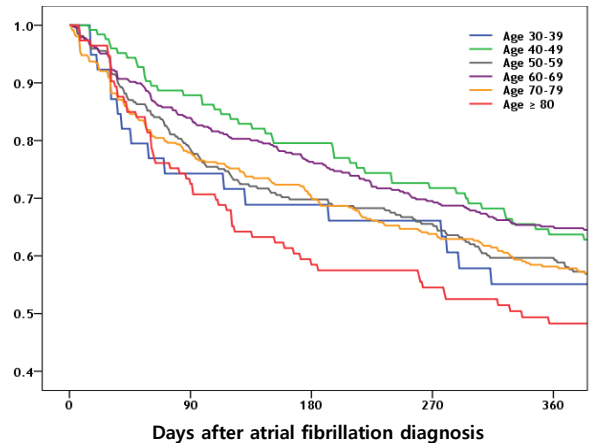


A**B**

S3 Fig. Proportion of the patients receiving warfarin after atrial fibrillation diagnosis whose warfarin therapy continued during follow-up. (A) CHA₂DS₂-VASc score and (B) age subgroups. Warfarin treatment was defined as continuous when the warfarin exposure periods (prescription coverage plus 45 days) overlapped each other.