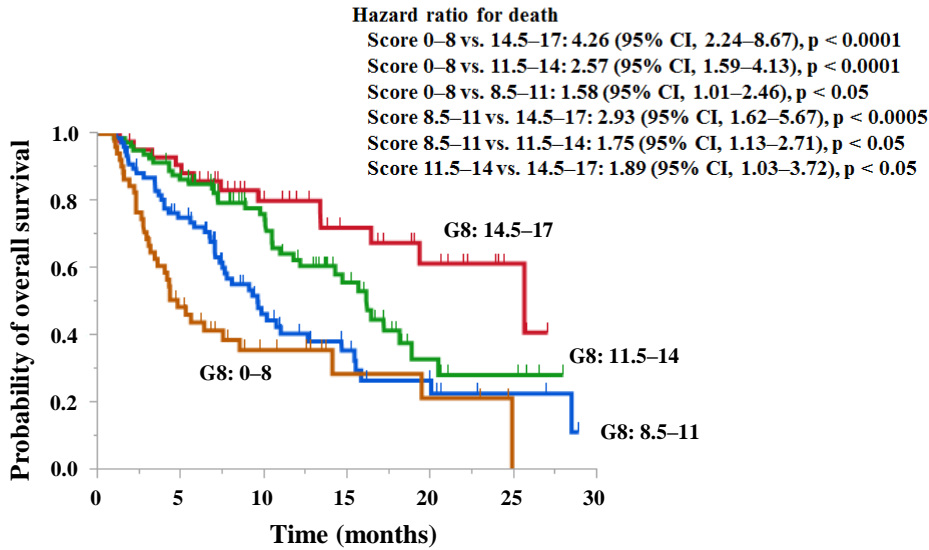


# Supporting Figure 2

Group	No. of patients	Median OS, months (95% CI)
G8 score: 14.5–17.0	45	25.6 (16.4–NR)
G8 score: 11.5–14	85	16.1 (11.7–18.8)
G8 score: 8.5–11	79	9.6 (7.3–14.6)
G8 score: 0–8	55	4.7 (3.4–8.5)



## Supporting Figure 2:

### Overall survival in elderly cancer patients in classification into four groups according to the G8 score.

Kaplan–Meier analyses for overall survival are shown. NR, not reached.