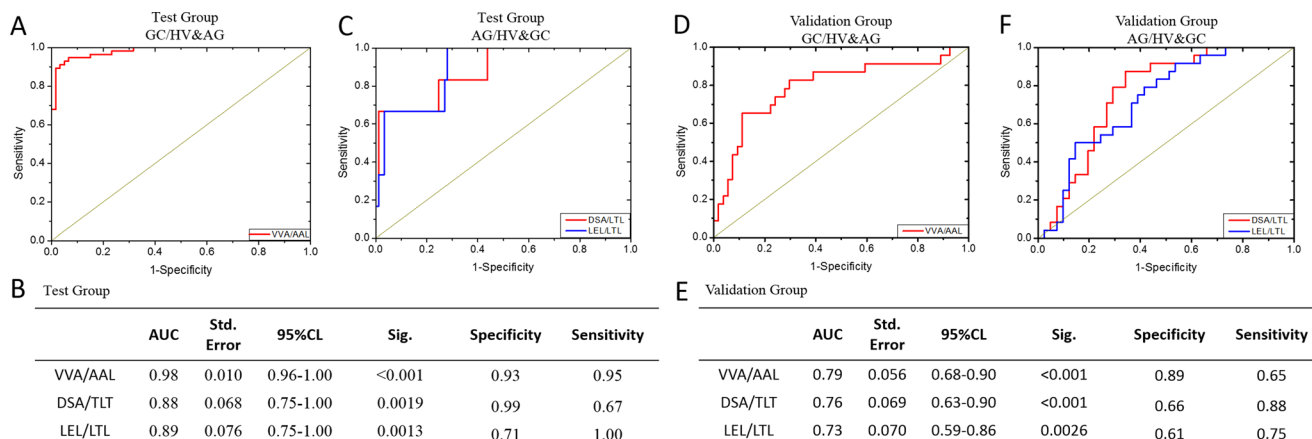
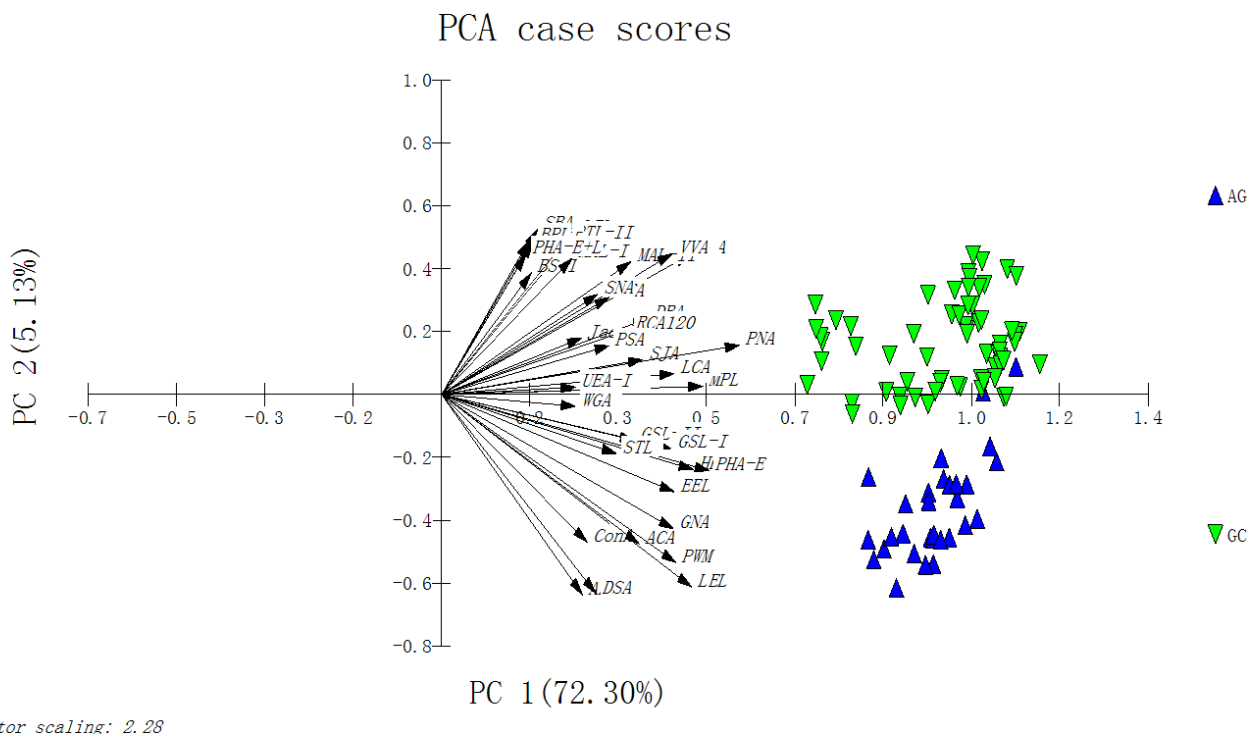


Salivary glycopatterns as potential biomarkers for diagnosis of gastric cancer

Supplementary Materials



Supplementary Figure 1: The diagnosis accuracy of the ratio strategy analyzed by ROC analysis. (A) The ROC analysis of VVA/AAL in the test group. (B) The detail information of the ROC analysis for the in the test group. (C) The ROC analysis of DSA/LTL and LEL/LTL in the test group. (D) The ROC analysis of VVA/AAL in the Validation group. (E) The detail information of the ROC analysis in the Validation group. (F) The ROC analysis of DSA/LTL and LEL/LTL in the Validation group.



Supplementary Figure 2: The result of PCA analysis between AG and GC.