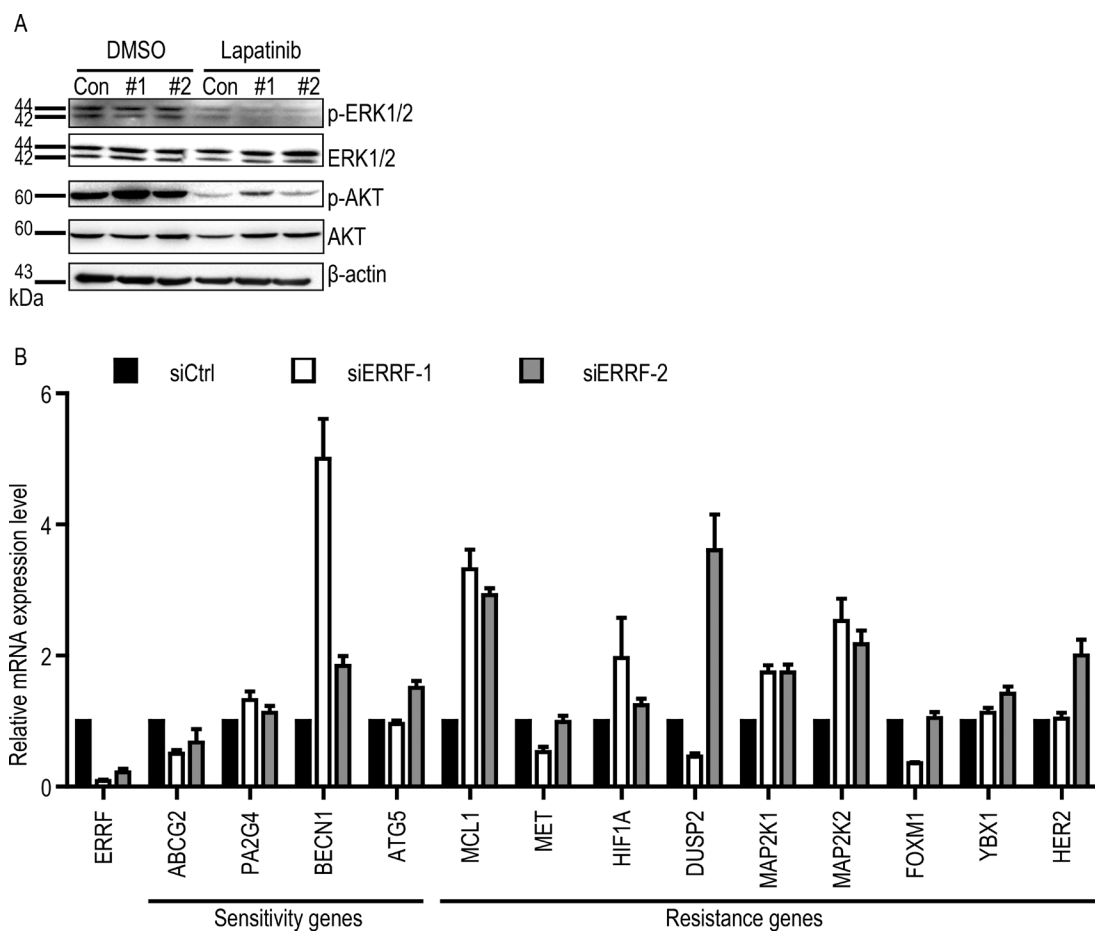


EREF sensitizes ERBB2-positive breast cancer cells to lapatinib treatment likely by attenuating MCL1 and ERBB2 expression

Supplementary Materials



Supplementary Figure 1: Knockdown of EREF has no obvious effect on the phosphorylation of ERK and AKT but altered the expression of multiple genes related to lapatinib sensitivity in BT-474 cells. (A) Cells were transfected with control siRNA or *EREF* siRNA and then treated with lapatinib or DMSO control, and proteins were detected by western blotting. **(B)** Real-time PCR was used to detect gene expression in BT-474 cells transfected with siRNAs.

Supplementary Table 1: Invasive breast carcinoma samples in which expression levels of both EREF and MCL1 are available in the TCGA database. See Supplementary_Table_1