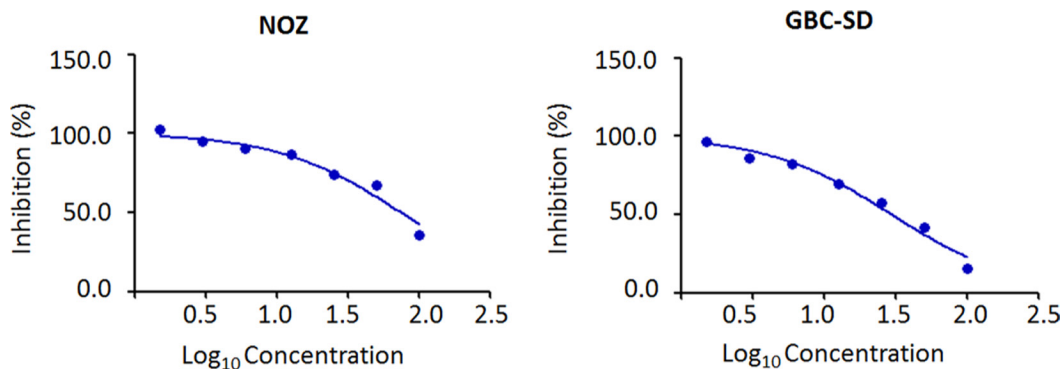
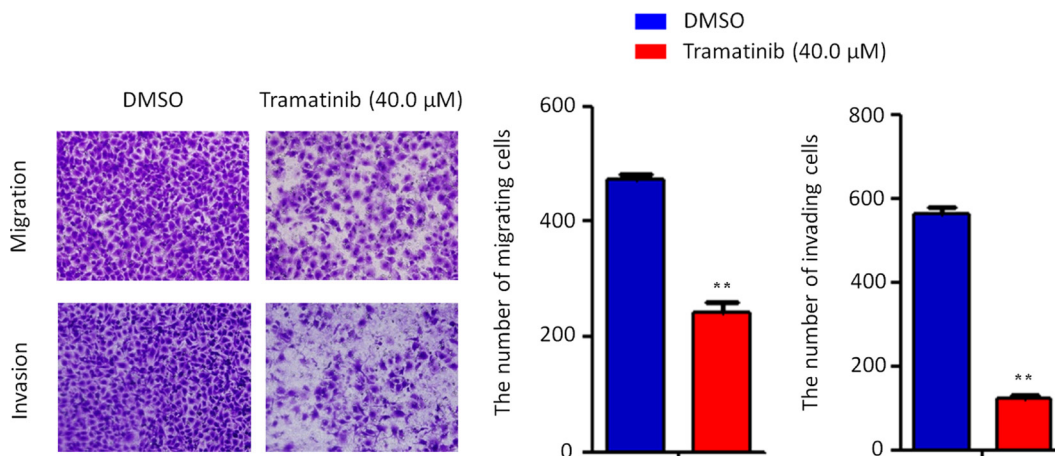


# Identification of MAP kinase pathways as therapeutic targets in gallbladder carcinoma using targeted parallel sequencing

## Supplementary Materials



**Figure 1:** NOZ and GBC-SD cells were treated with different doses of iCRT-14 for 48 h. The MTT assay was performed to evaluate cell growth ability.



**Figure 2:** Trametinib inhibited cell migration and invasion in GBC-SD cells. The representative images of migrated/invaded cells (left panels). Histograms, corresponding to upper panels, show means ± SD of cell numbers from three independent assays (right panels). Statistically significant differences were indicated: \*\**P* < 0.01.

**Supplementary Table 1: Clinicopathologic characteristics of GBC patients used in this study for targeted parallel sequencing**

Sample ID	Age at study entry	Gender	Diagnosis	TNM Stage	Tumor site	Histopathological subtypes	Presence of jaundice	Presence of gallbladder stones
T4	66	F	GBC	T <sub>2</sub> N <sub>1</sub> M <sub>0</sub>	Fundus/body	low	NO	YES
T5	54	F	GBC	T <sub>3</sub> N <sub>0</sub> M <sub>0</sub>	Fundus/body	low	NO	NO
T7	73	F	GBC	T <sub>3</sub> N <sub>1</sub> M <sub>0</sub>	Fundus/body	low	NO	NO
T9	68	M	GBC	T <sub>3</sub> N <sub>2</sub> M <sub>0</sub>	Fundus/body	low	NO	NO
T13	92	F	GBC	T <sub>3</sub> N <sub>1</sub> M <sub>0</sub>	Neck	moderate	NO	NO
T14	48	F	GBC	T <sub>4</sub> N <sub>1</sub> M <sub>0</sub>	Fundus/body	low	NO	YES
T15	61	M	GBC	T <sub>2</sub> N <sub>1</sub> M <sub>0</sub>	Fundus/body	high	NO	NO
T16	79	M	GBC	T <sub>2</sub> N <sub>1</sub> M <sub>0</sub>	Neck	low	NO	YES
T17	66	M	GBC	T <sub>4</sub> N <sub>1</sub> M <sub>0</sub>	Fundus/body	high	NO	NO
T30	63	M	GBC	T <sub>4</sub> N <sub>0</sub> M <sub>0</sub>	Fundus/body	low	YES	NO
T31	62	F	GBC	T <sub>3</sub> N <sub>1</sub> M <sub>1</sub>	Fundus/body	moderate	YES	NO
T34	65	F	GBC	T <sub>3</sub> N <sub>1</sub> M <sub>0</sub>	Fundus/body	moderate	NO	YES
T36	49	M	GBC	T <sub>4</sub> N <sub>1</sub> M <sub>1</sub>	Fundus/body	low	NO	YES
T44	52	F	GBC	T <sub>3</sub> N <sub>2</sub> M <sub>0</sub>	Fundus/body	low	NO	NO

**Supplementary Table 2: A list of target genes.** See Supplementary\_Table\_2

**Supplementary Table 3: Recurrent mutations identified in this study.** See Supplementary\_Table\_3