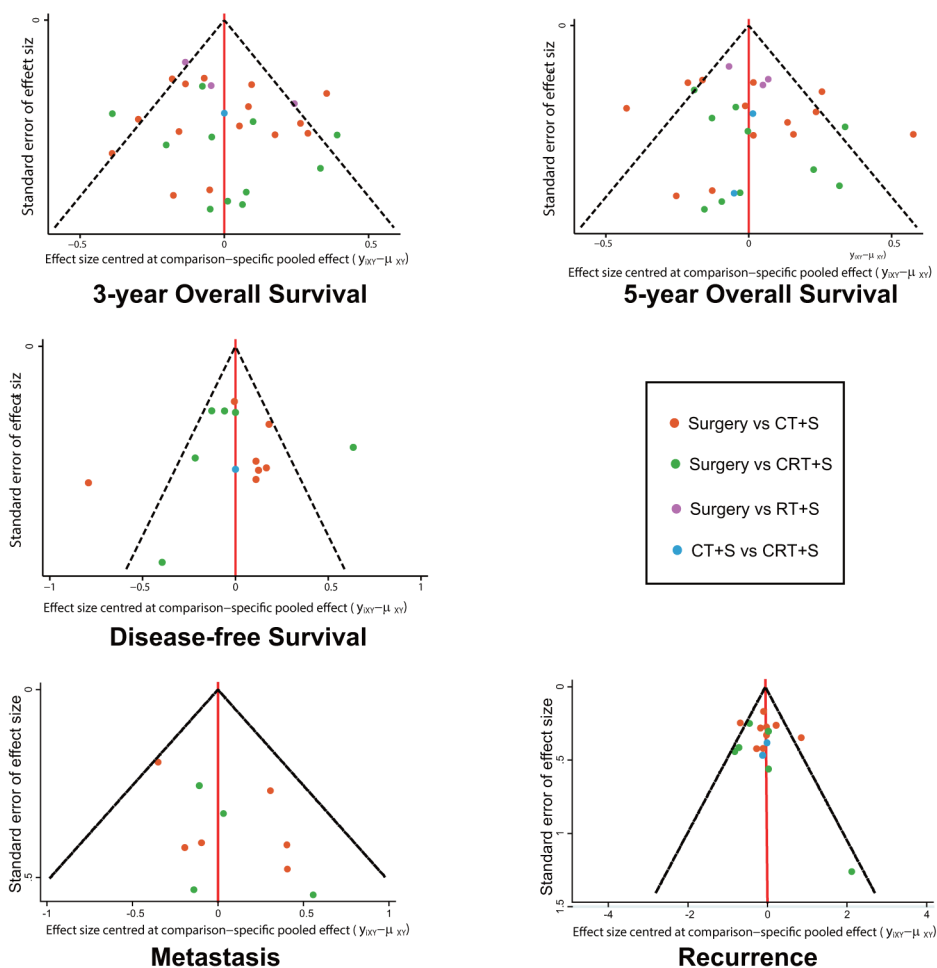


Prognosis of surgery combined with different adjuvant therapies in esophageal cancer treatment: a network meta-analysis

SUPPLEMENTARY MATERIALS



Supplementary Figure 1: Publication bias of overall survival in 3 years and 5 years, disease-free survival, recurrence and metastasis.

Supplementary Table 1: Jadad Scale of 34 included studies

Study or Subgroup	Design	Blinding	Withdrawal
Law <i>et al.</i> , 1997	1	0	1
Ancona <i>et al.</i> , 2001	2	0	1
Kelsen <i>et al.</i> , 2007	2	1	1
Allum <i>et al.</i> , 2009	2	1	1
Boonstra <i>et al.</i> , 2011	2	2	1
Ando <i>et al.</i> , 2012	1	0	1
Maipang <i>et al.</i> , 1994	1	0	1
Nygaard <i>et al.</i> , 1992	1	0	1
Schlag <i>et al.</i> , 1992	1	0	1
Ychou <i>et al.</i> , 2011	2	0	1
Pouliquen <i>et al.</i> , 1996	2	0	1
Ando <i>et al.</i> , 1997	1	0	1
Ando <i>et al.</i> , 2003	1	0	1
Lee <i>et al.</i> , 2005	0	0	1
Herroor <i>et al.</i> , 2003	0	0	1
Shiozaki <i>et al.</i> , 2004	0	0	1
Zhang <i>et al.</i> , 2008	0	0	1
Walsh <i>et al.</i> , 1996	1	0	1
Urba <i>et al.</i> , 2001	1	0	1
Stahl <i>et al.</i> , 2009	2	0	1
Burmeister <i>et al.</i> , 2011	2	0	1
Tepper <i>et al.</i> , 2008	1	0	1
van Hagen <i>et al.</i> , 2012	1	0	1
Burmeister <i>et al.</i> , 2005	2	0	1
Lv <i>et al.</i> , 2010	1	0	1
Apinop <i>et al.</i> , 1994	1	0	0
Le Prise <i>et al.</i> , 1994	1	0	1
Walsh <i>et al.</i> , 1995	1	0	1
Mariette <i>et al.</i> , 2014	2	0	1
Kobayashi <i>et al.</i> , 2000	2	0	1
Launois <i>et al.</i> , 1981	1	0	1
Gignoux <i>et al.</i> , 1987	2	1	1
Arnott <i>et al.</i> , 1992	2	1	1
Lee <i>et al.</i> , 2004	2	1	1

Supplementary Table 2: SUCRA of different treatments

Treatment	3-year OS	5-year OS	DFS	Recurrence	Metastasis
S	0.24	0.26	0.08	0.11	0.09
CT+S	0.53	0.65	0.45	0.47	0.61
CRT+S	0.99	1.00	0.97	0.93	0.80
RT+S	0.24	0.09	-	-	-

Abbreviation: OS-Overall survival, DFS-Disease-free survival, CRT-chemoradiotherapy, S-surgery, CT-chemotherapy, RT-radiotherapy