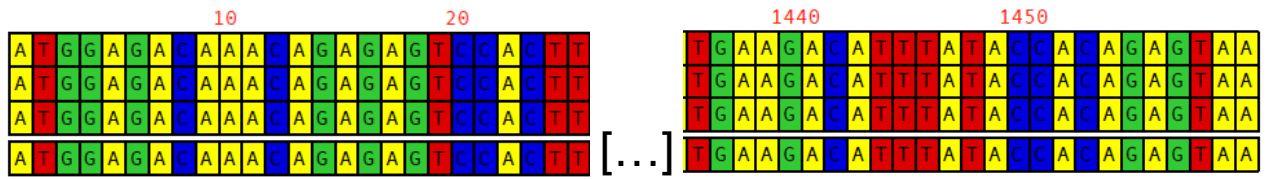


Supplementary Figures

Figure S1

5' RACE

Clone 1
Clone 2
cDNAIE1
Consensus



3' RACE

Clone 3
Clone 4
cDNAIE1
Consensus

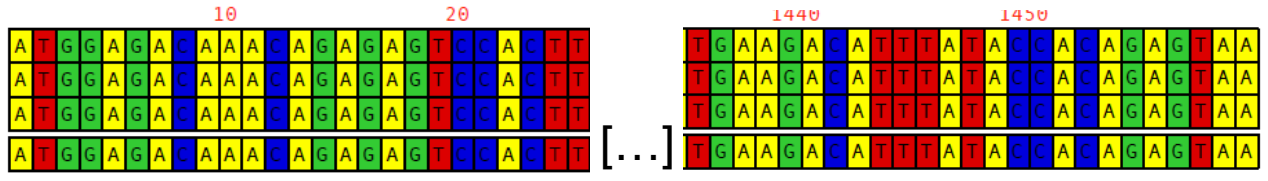
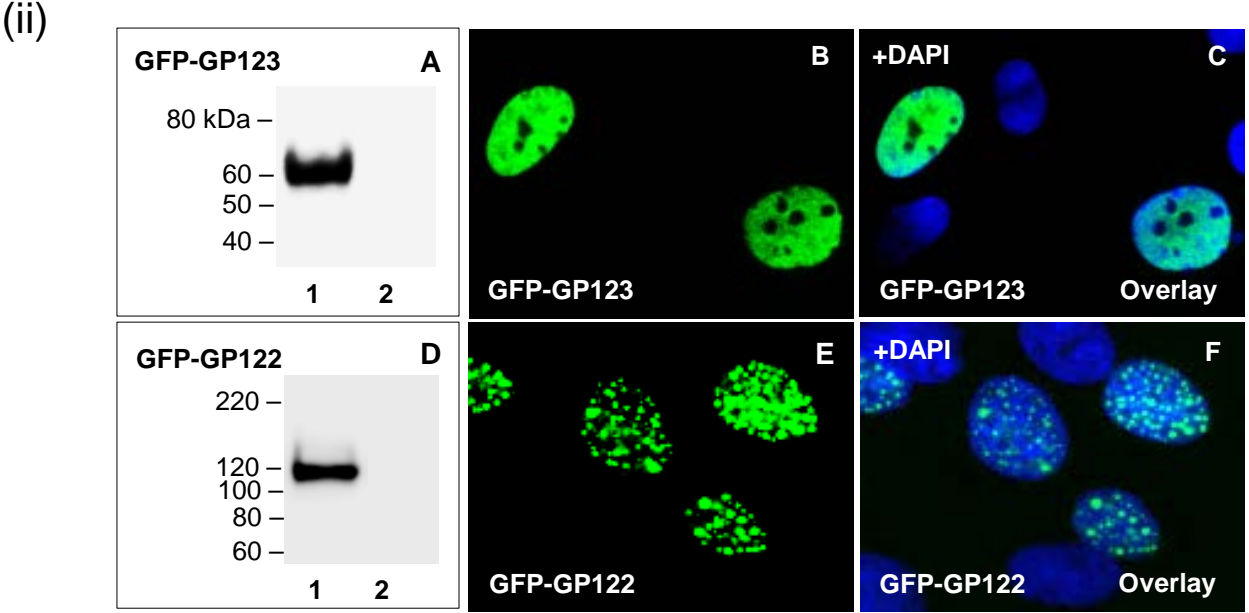
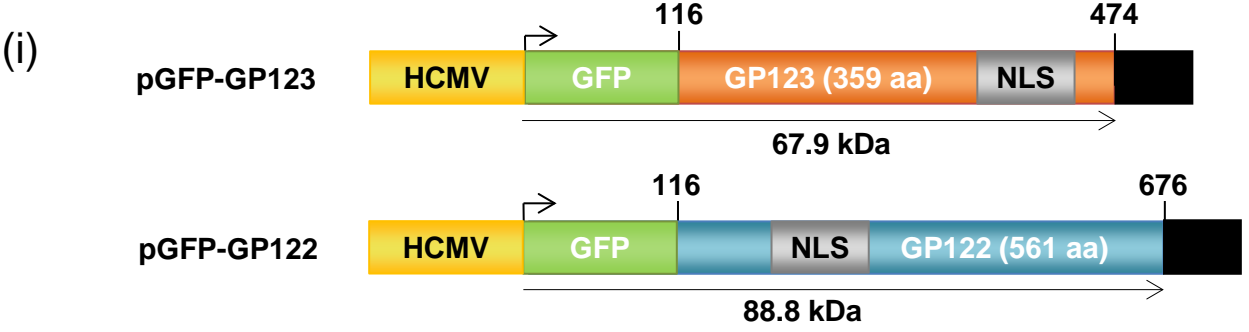


Figure S2



(iii)

| Predicted NLS | | | |
|---------------|---------|----------------------------|-------------|
| Protein | Range | Sequence | Type |
| IE1 | 428-438 | PRPRKRKADGT | Monopartite |
| IE1 | 425-448 | RLRPRPRKRKADGTMLTRAKVAEL | Bipartite |
| IE2 | 265-275 | RPAKRPRSNDE | Monopartite |
| IE2 | 248-273 | RSDSTKRGRDDKTIRKTRPAKRPRSN | Bipartite |

Figure S3

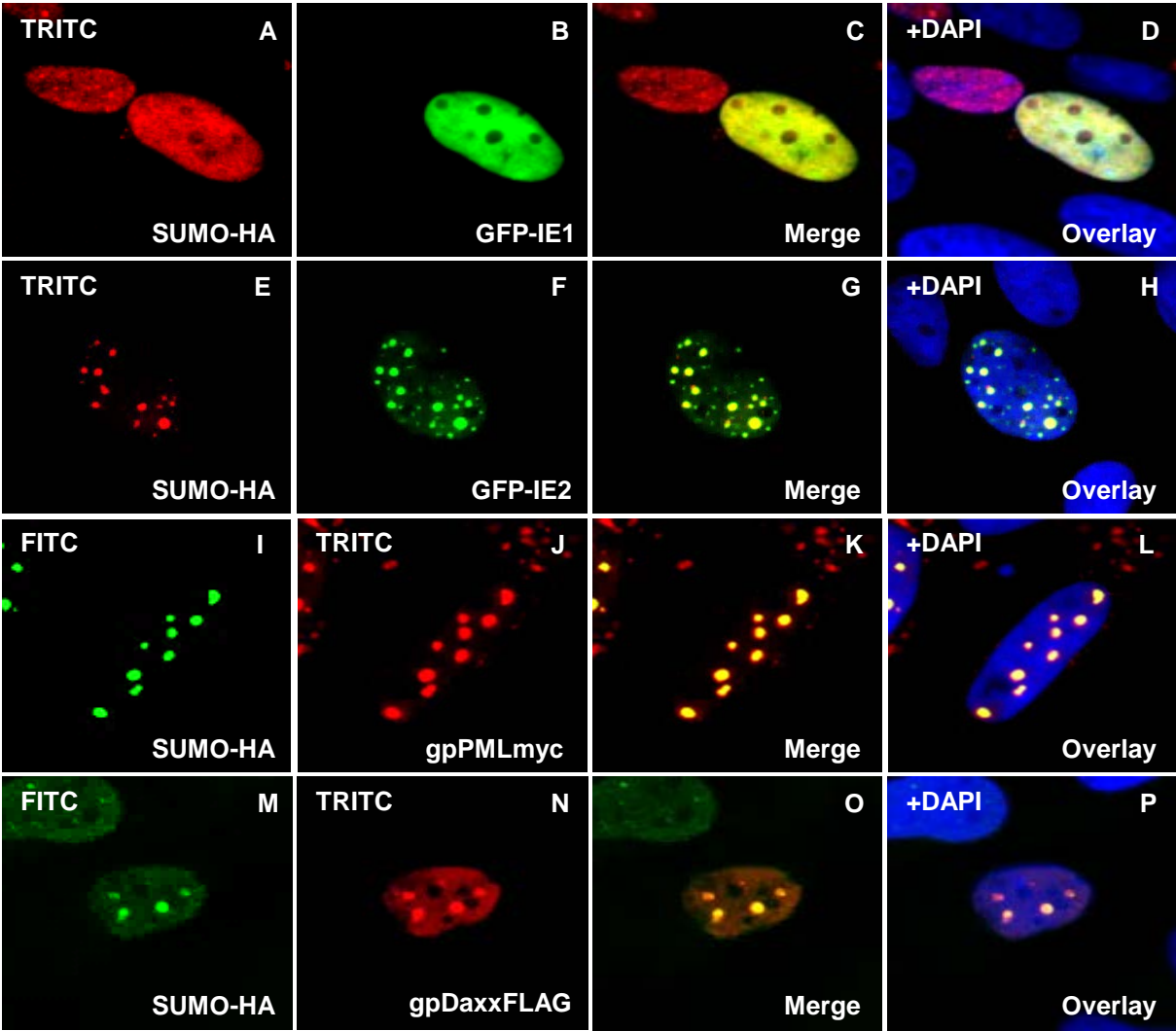
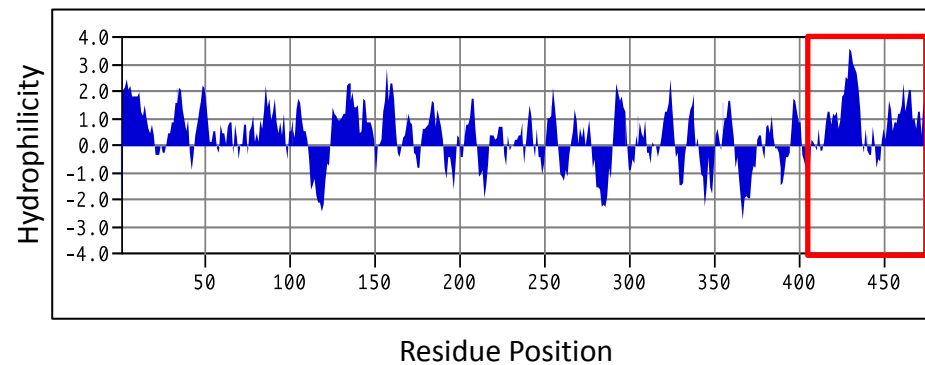
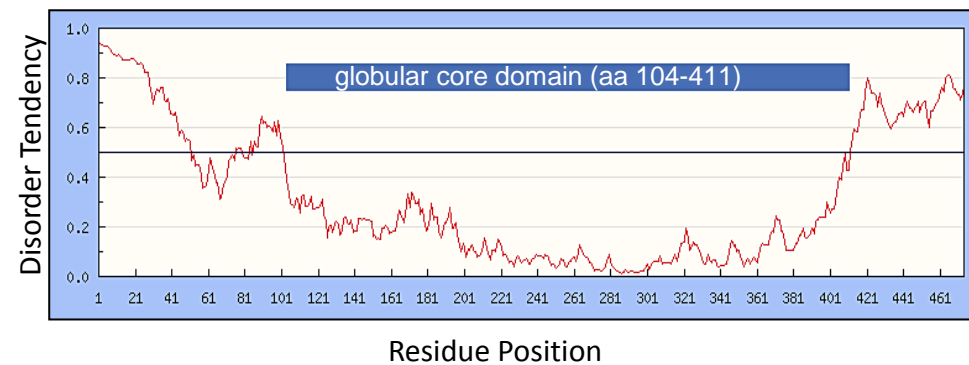
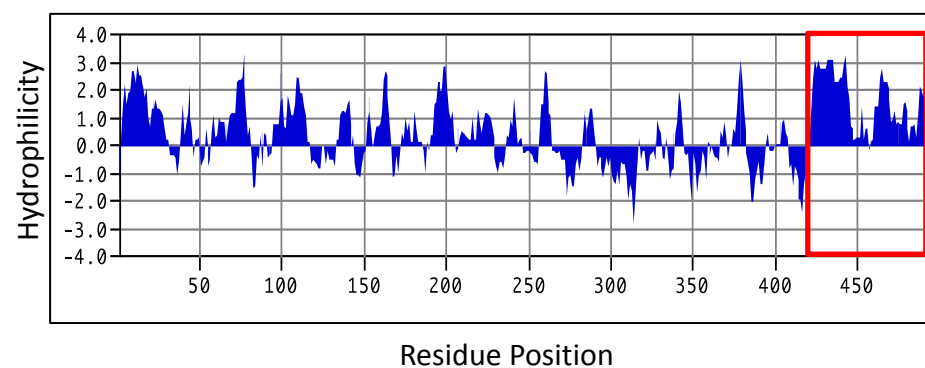
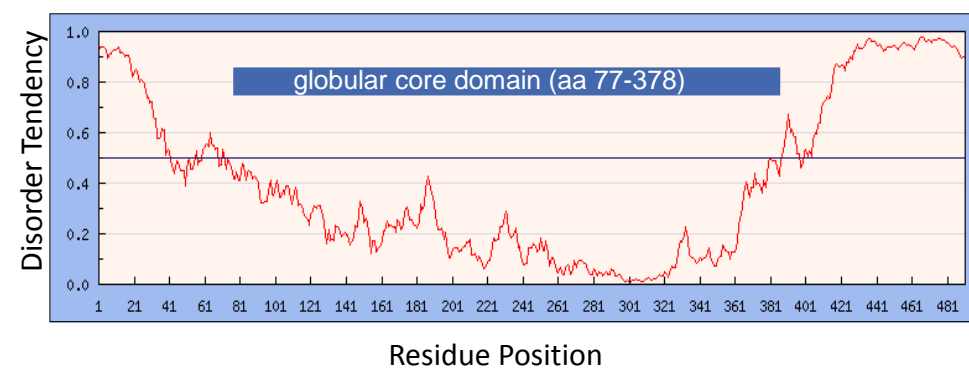


Figure S4

(i) GPCMV IE1



(ii) HCMV IE1



(iii) MCMV IE1

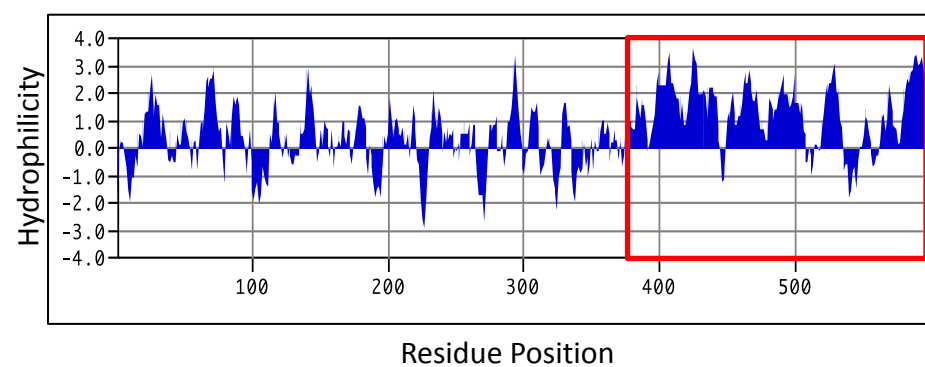
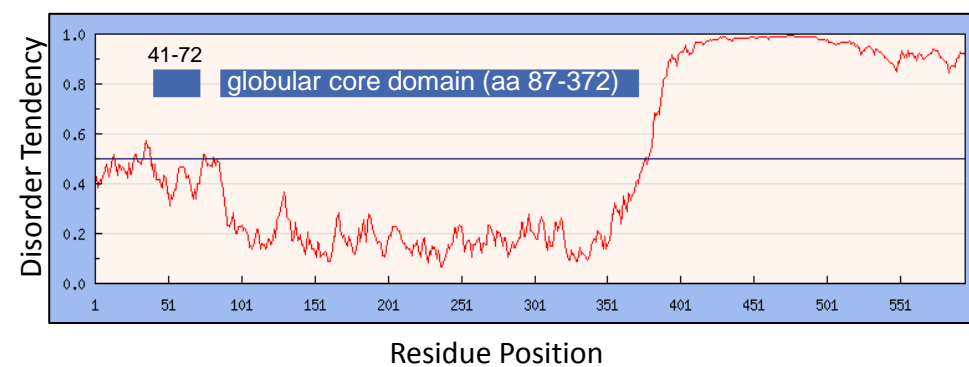


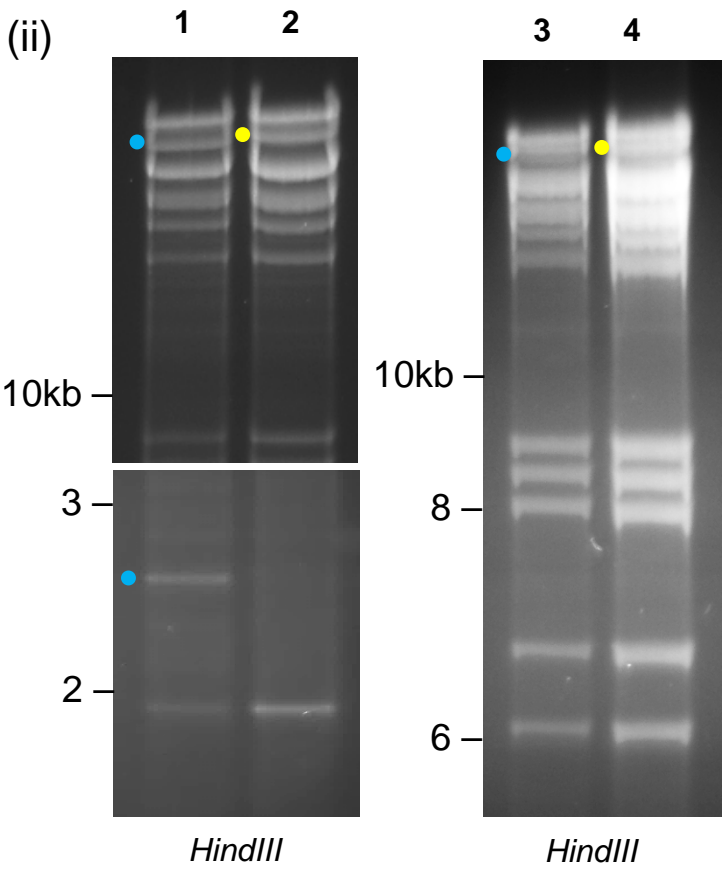
Figure S5

(i)

```

190021 ttacatataa atgataactca tgaacaaca ggcatacata tgatataat tgtgggtata
190081 aatgagcaac atatataatc aagattactc tgtgggtataa atgtcttcat ctagctgagt
190141 ctcacgccc gagtcggcca tgttagaagt gtcgggctcc ccagctaact cagcaacttt
190201 agcgcgtgtc agcatggtgc catctgcctt tctcttcctt ggtctgggtc taagtctacc
190261 agaagcacc tcagattcog acatgggacc cgtgatgggt gtattaaggg ggggtaaaag
190321 tgccgcgtac ttgttgcgca ggtacgaggg aaggcactgc aagaaagcac tgctgggtct
190381 cacgccatt agatcagaca aggccttttc tataacaggt aacagacatt gcactatgag
190441 cgacggatct gtctgtcccc aggtgaactg tctaagtacc tcttctataa tgaatgcatt
190501 aaccgcatcc aagtactgag tatgacgctt aatggccata aagagctgac tgttaaagtc
190561 cctgtccata gcatcaaagt atgatgtgac agactctgag atgtctgtcc tgagtctgga
190621 gaatacatca cagaaataat aatcacgtct gccacatca tctactaata actcaatcaa
190681 agtcaagaca gtcttaacct gagcatcact aaaccaagtg ccagatttca aattattgat
190741 aaagcatgcg gcggttctca gggtatgatt gtgcaaaggc acatcacaga aactggtgta
190801 atgcaacca cgttgcaaca ccatttcctt ggtctctatt acgagatcat ttcgatgagc
190861 atccaaatta cttttgagcg cottaagaat aatggtatca aatgatcog aatgtgaagc
190921 gatgtccctt agggcgctct gaaccactgc atagggggtc atagcttcat aattttttag
190981 catgctttc attccttga ccatagaaca ggcttgctta tttgcattaa agatactatc
191041 agtgacacgt tcgtgtctct ggagtctaac ccacacgctt tcaatgcaac gtttacattc
191101 ttcccatgcc agttccctgt gctgtctaag actatcttgt aattcctgaa tgcttcgttt
191161 catgacgagt agcagggctc gaactgtaaa agaaacgagg ggtgcatgag ggaagggaaat
191221 gaacaatgcg gaagttatca catgacagta gtcttatata tcccactcac ctgcaacagc
    
```

(ii)



(iii)

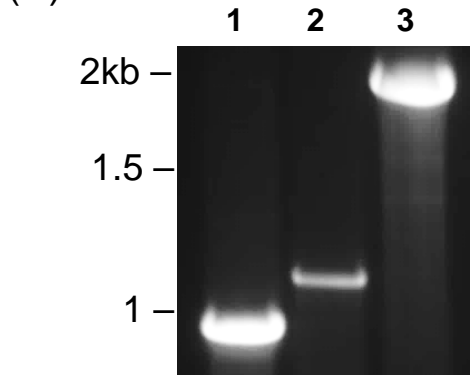
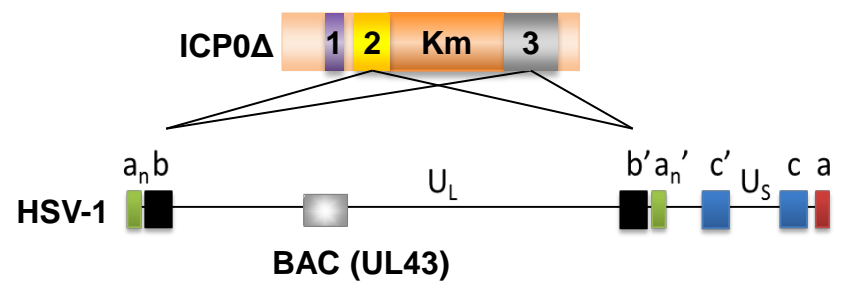


Figure S6

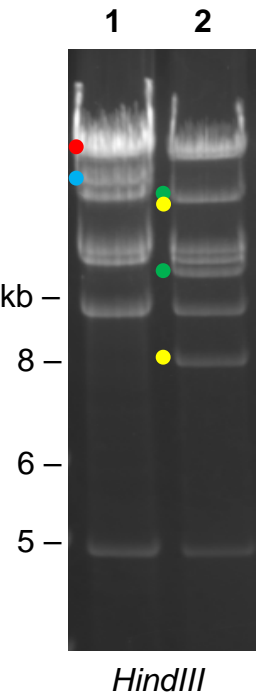
(i)

| | | | | | | |
|------|--------------------|--------------------|-------------------|--------------------|-------------------|-------------------|
| 3001 | ggggggagag | ggggaactcg | tgggtgctga | ttgacgcggg | aaatccccc | ccattcttac |
| 3061 | cgcgccccct | tttttccoct | tagcccgccc | cggatgtctg | ggtgtttccc | tgcgaccgag |
| 3121 | acctgcccga | cagcagcgac | tctgaggcgg | agaccgaagt | ggggggccgg | ggggacgcgg |
| 3181 | accaccaatga | cgacgactcc | gcctccgagg | cggacagcac | ggacacggaa | ctgttcgaga |
| 3241 | cggggctgct | ggggcccgag | ggcgtggatg | ggggggcgg | ctcggggggg | agccccccc |
| 3301 | gcgaggaaga | ccceggcagt | tgcggggggc | ccccccctcg | agaggacggg | gggagcgacg |
| 3361 | agggcgacgt | gtgcgcccgtg | tgcacggatg | agatcgcgcc | ccacctgcgc | tgcgacacct |
| 3421 | tcccgtgcat | gcaccgcttc | tgcaccccgt | gcatgaaaac | ctggatgcaa | ttgcgcaaca |
| 3481 | cctgcccctg | gtgcaacgcc | aaactggtgt | acctgatagt | gggcgtgacg | cccagcgggt |
| 3541 | cgttcagcac | catcccgatc | gtgaaacgacc | cccagaccgg | catggaggcc | gaggagggcg |
| 3601 | tcagggcggg | cacggccgtg | gactttatct | ggacggggcaa | tcagcggctc | gccccgcggt |
| 3661 | acctgaccct | ggggggggcac | acggtgaggg | ccctgtcgc | caccaccccg | gagcccacca |
| 3721 | cggacgagga | tgacgacgac | ctggacgacg | gtgaggcggg | ggggcgcaag | gaccctgggg |
| 3781 | gaggagaggg | agggaggggg | ggaggggagg | aataggcggg | cgggcgagga | aagggcggcg |
| 3841 | gggggagggg | gcgtaacctg | atcgcgcccc | ccgttgtctc | ttgcagcaga | ctacgtaccg |
| 3901 | cccgcccccc | gcccggacgc | ccgcgcccc | ccaacgagag | gdcgcgcgc | gccccccgtg |
| 3961 | acgggcgggg | cgtctcacgc | agccccccag | ccggccgcgg | ctcggacagc | gccccctcg |
| 4021 | gcgcccacg | ggccacacgg | cagcagtaac | accaacacca | ccaccaacag | cagcggcggc |
| 4081 | ggcggctccc | gccagtcgcg | agcccgggcg | ccgcgggggg | cgtctgccc | ctccgggggg |
| 4141 | gttggggttg | gggttgggtt | tgttgaagcg | gaggcggggc | ggccgagggg | ccggacgggc |
| 4201 | ccccctgtca | acagaccgcg | ccccttgca | aacaacagag | accccatagt | gatcagcgac |
| 4261 | ccccccccgg | cctctcccca | caggcccccc | gcggcgccca | tgccaggtc | cgccccccgc |
| 4321 | cccgggccc | ccgcgtccgc | ggccgcgtcg | ggaccgcgc | gccccgcgc | ggcctggcc |
| 4381 | ccgtgctg | gagcgcgc | tcgggggccc | ggcccccgcg | ccccggccc | cgggcccggg |
| 4441 | ccggccgccc | gcccccgqga | cgcgcgcctg | gtgccccagt | cgcactcgtc | cctggtcag |
| 4501 | gcccgcgaac | aagaaacagag | tctgtgcggg | gcgcgtgcga | cggtgccgcg | cggctcgggg |
| 4561 | gggcccggcg | tggagggtgg | gcaacggccc | tcccgcggcg | ccgccccctc | cggcgcgc |
| 4621 | ccgtcccct | ccgcgcctc | tgtcgagcag | gaggcggcgg | tgcgtccgag | gaagagggc |
| 4681 | gggtcggg | aggaaaacc | ctccccccag | tccacgcgtc | ccccctcgc | gcccgcagg |
| 4741 | gccaagagg | cggcgacgca | ccccccctcc | gactcagggc | cggggggcg | cggccaagg |
| 4801 | gggcccggga | ccccctgac | gtcctcggcg | gcctccgct | cttctcctc | tgcctctcc |
| 4861 | tctctggccc | cgacccccg | ggggcgccc | tcttcgcgcg | ccggggccgc | gtcctctcc |
| 4921 | gcttccgct | ctcggggcgg | ggcgtcgg | gcccctggag | ggagacaaga | ggaaacctcc |
| 4981 | ctcggcccc | gcgctgctc | tggcccgcg | gggcccggga | agtgtgccc | gaagacggc |
| 5041 | cacgcggaga | cttccggggc | cgtccccgcg | ggcggcctca | cgcgctacct | gcccattctg |
| 5101 | gggggtctcta | gcg | tgtgctgc | ctacgtgaaca | agactatcac | gggggactgc |
| 5161 | ctgcccattcc | tggacatgga | gacggggaac | atcggggcgt | acgtggtcct | ggtggaccag |
| 5221 | acgggaaaca | tggcgaccgg | gtcgcggg | cgggtcccc | gctggagccg | ccgcaccctg |
| 5281 | ctccccgaga | ccgcgggtaa | ccaactgtag | ccccccagat | accgcagcgc | ccccgcgtcg |
| 5341 | gagtggaaca | gcctctggat | gacccccgtg | gggaacatgc | tgttcgacca | gggcacccta |
| 5401 | gtggggccc | tggactccg | cagcctcgg | tctcggcacc | cgtggtccgg | ggagcagggg |
| 5461 | gcgtcgacc | gggacgaggg | aaaacaataa | gggacgcccc | ccgtgtttgt | ggggaggggg |
| 5521 | gggtcggggc | ctgggtggct | tctggccgcg | cccactacac | cagccaatcc | gtgtcggggg |

(ii)



(iii)



(iv)

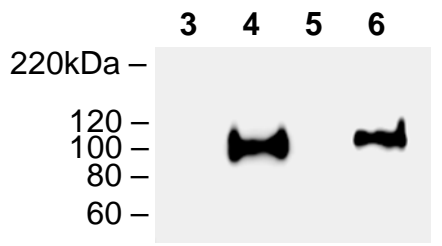
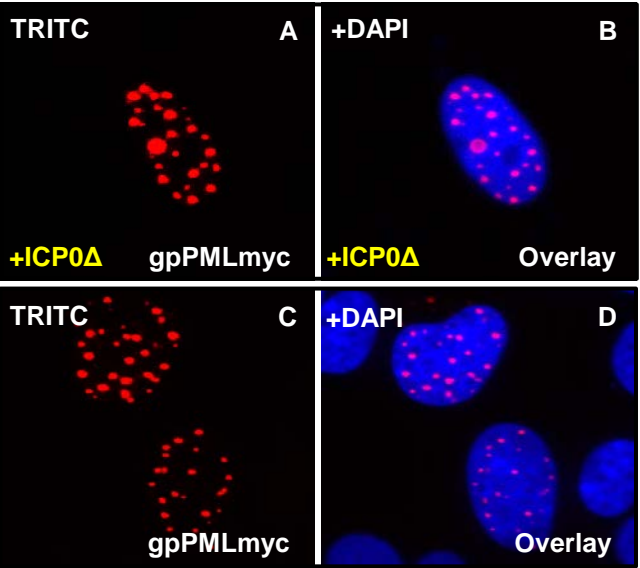


Figure S7

(i)



(ii)

