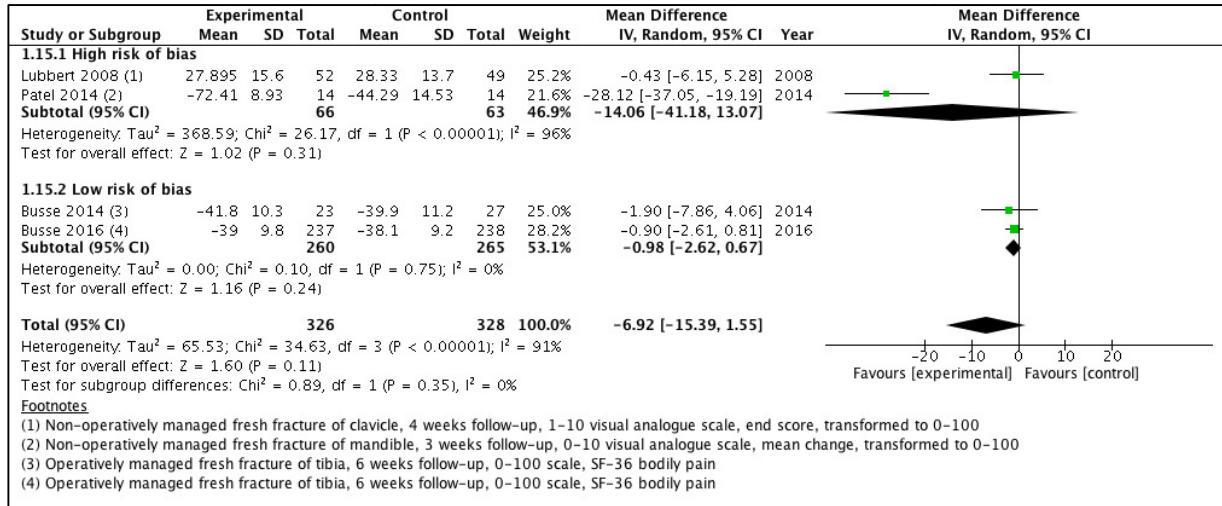
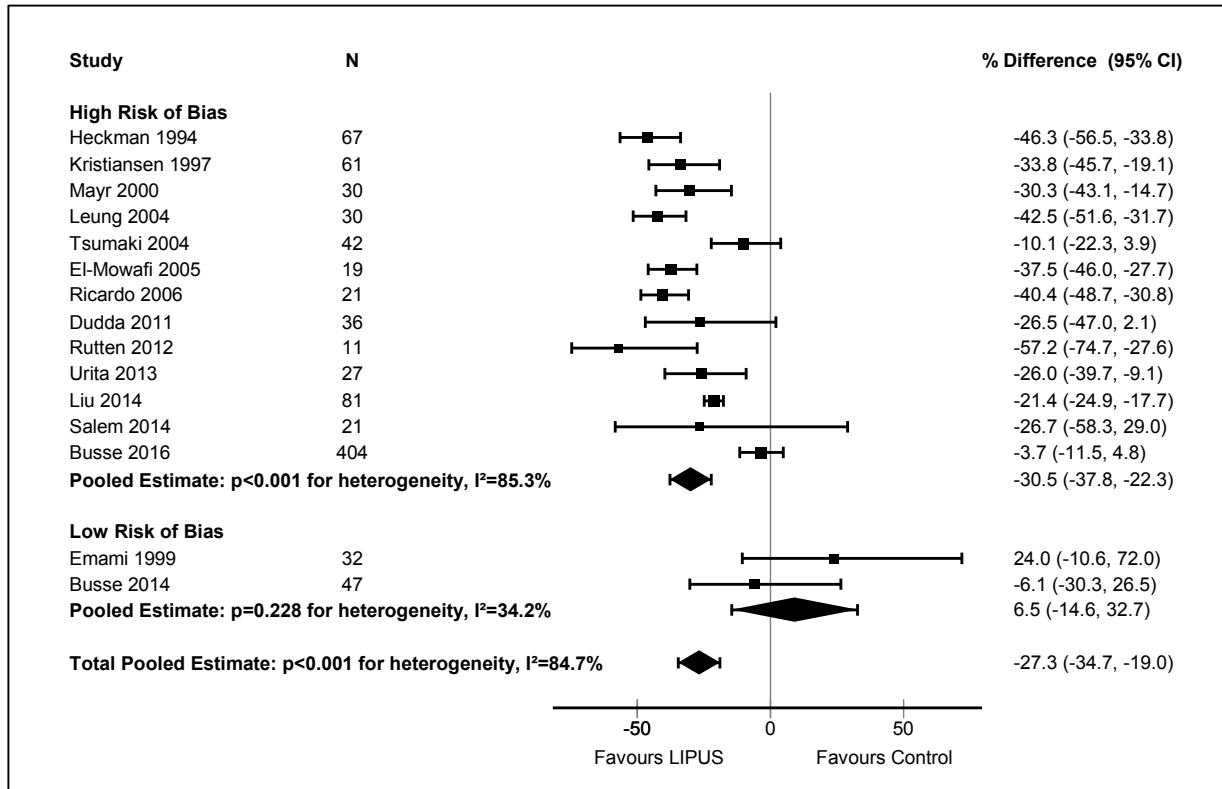


**Appendix 3. Additional analyses [posted as supplied by author]**

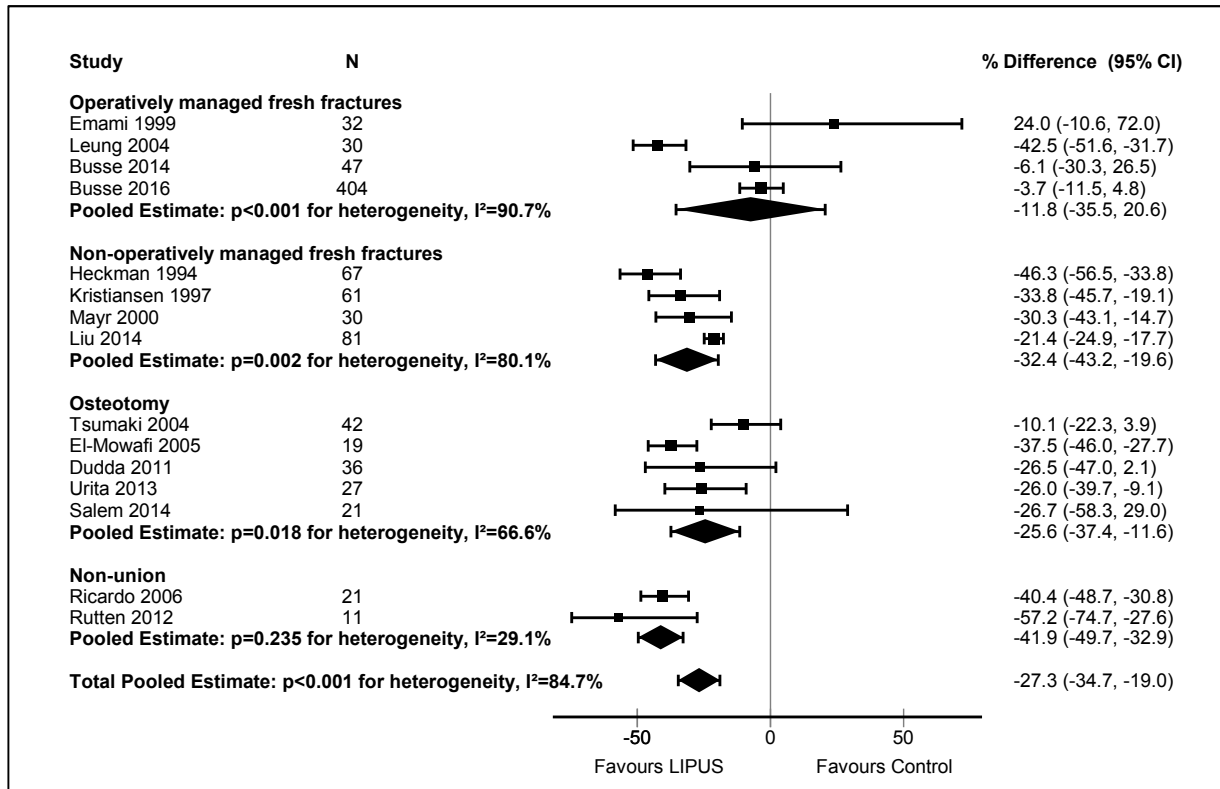
**Fig A, Sensitivity analysis: Forest plot for LIPUS compared with control (sham device or no device) for pain, by risk of bias considering 10% (instead of 20%) attrition or more representing high risk of bias. Interaction p=0.35**



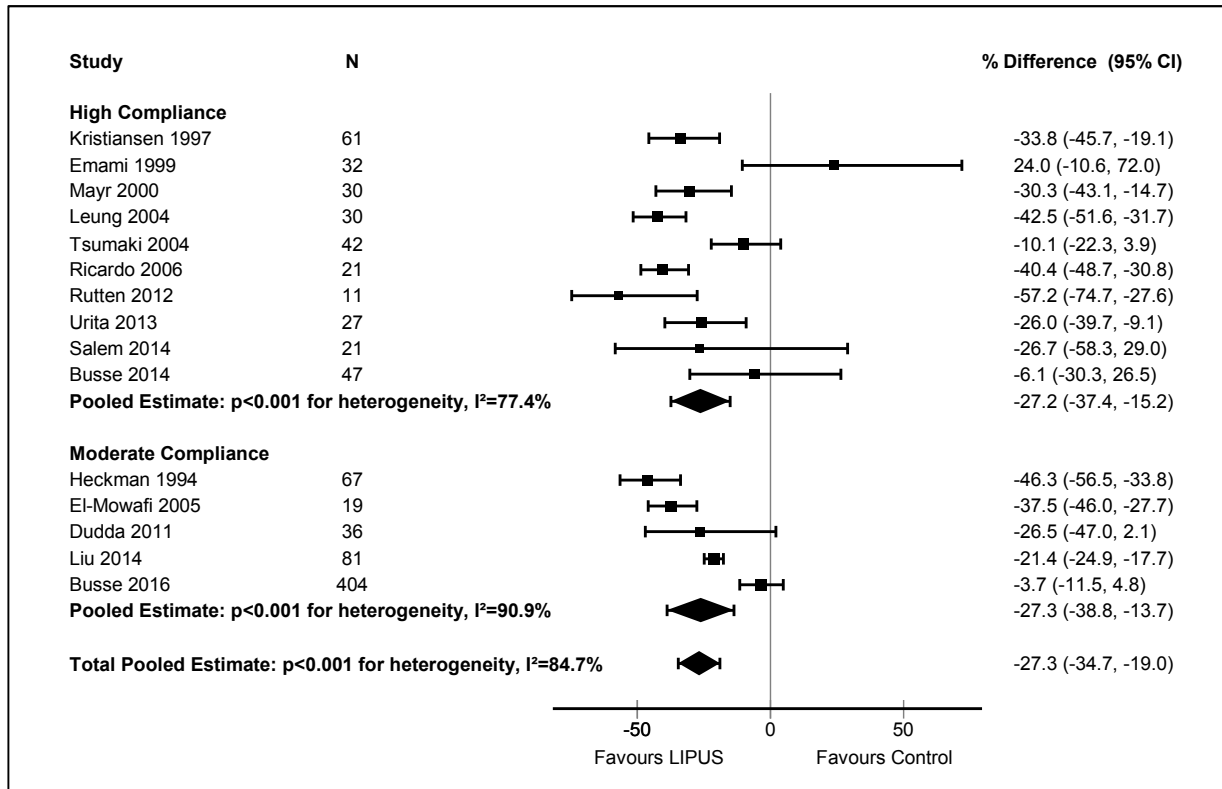
**Fig B, Sensitivity analysis: Forest plot for percent difference for LIPUS compared with control (sham device or no device) for days to radiographic healing, by risk of bias considering 10% (instead of 20%) attrition or more representing high risk of bias. Interaction p=0.004**



**Fig C, Forest plot for percent difference for LIPUS compared with control (sham device or no device) for days to radiographic healing, by clinical subgroups. Interaction p=0.13**



**Fig D, Forest plot for percent difference for LIPUS compared with control (sham device or no device) for days to radiographic healing, by compliance. Interaction p=0.99**



**Fig E, Funnel plot for days to radiographic healing. Egger's linear regression test for asymmetry of the funnel plot:  $p=0.251$**

