

## **SUPPLEMENT MATERIAL**

### **Legend of Supplemental Figures**

**Figure S1:** Association between renal replacement type (home hemodialysis (Home HD) versus kidney transplantation (Kidney Tx)) and mortality using Kaplan-Meiers curves in the propensity score matched cohort and using alternative censoring method

Abbreviations: Home HD: Home Hemodialysis; Kidney Tx: Kidney Transplant

**Figure S2:** Mortality risk of home hemodialysis patients compared to kidney transplant recipients in groups of patients with different recipient and donor characteristics using the propensity score matched cohort and alternative censoring method

Abbreviations: Alb: Serum Albumin; ASHD: Arthero-Sclerotic Heart Disease; CHF: Congestive Heart Failure; ECD: Extended Criteria Donor; Home HD: home hemodialysis; KDPI: Kidney Donor Profile Index; Kidney Tx: Kidney Transplant; N/A: Not Applicable; SCD: Standard Criteria Donor

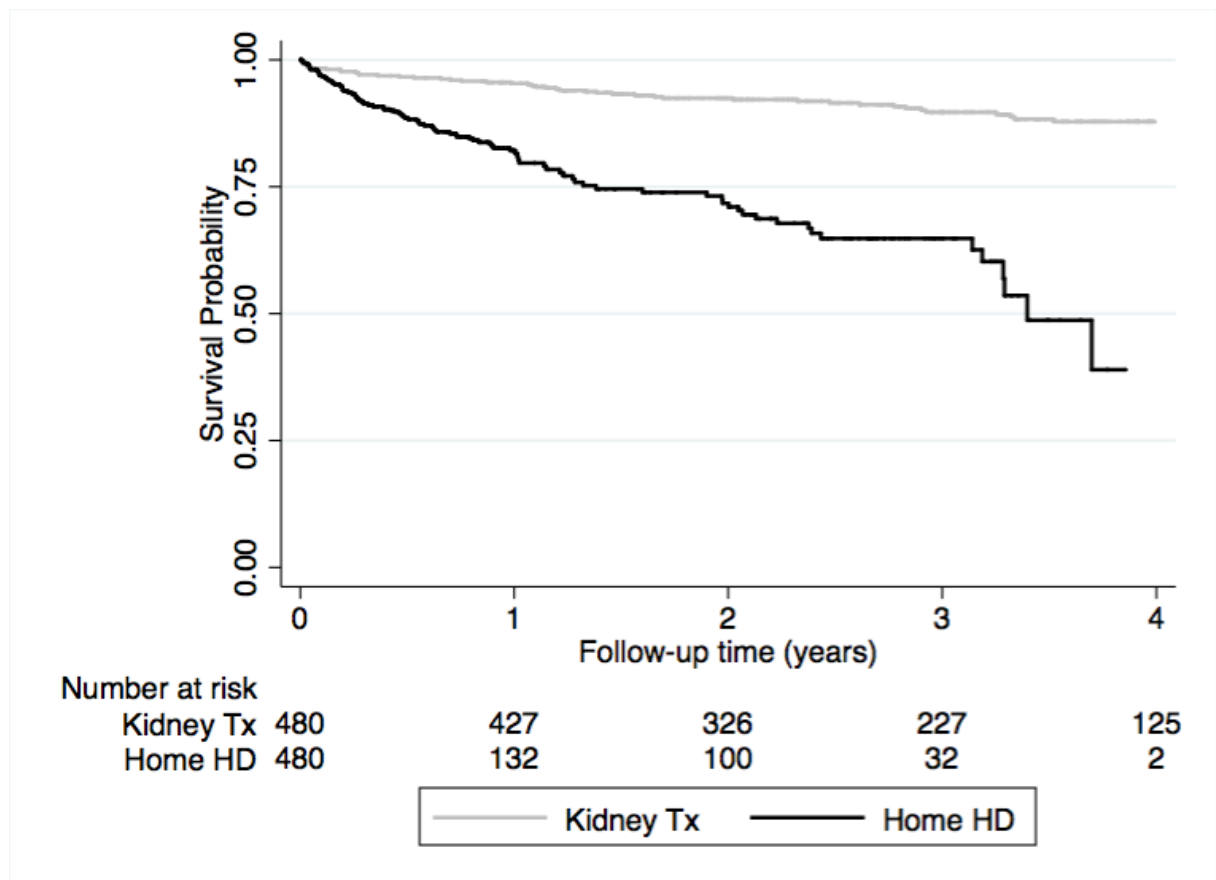
**Figure S3:** Association between renal replacement type (home hemodialysis (Home HD) versus kidney transplantation (Kidney Tx)) and mortality using Kaplan-Meiers curves in the entire patients' cohort (n=13,306)

Abbreviations: Home HD: Home Hemodialysis; Kidney Tx: Kidney Transplant

**Figure S4:** Mortality risk of home hemodialysis patients compared to kidney transplant recipients in groups of patients with different recipient and donor characteristics using the entire patients' cohort (n=13,306)

Abbreviations: Alb: Serum Albumin; ASHD: Arthero-Sclerotic Heart Disease; CHF: Congestive Heart Failure; ECD: Extended Criteria Donor; Home HD: home hemodialysis; KDPI: Kidney Donor Profile Index; Kidney Tx: Kidney Transplant; N/A: Not Applicable; SCD: Standard Criteria Donor

Figure S1:



**Figure S2:**

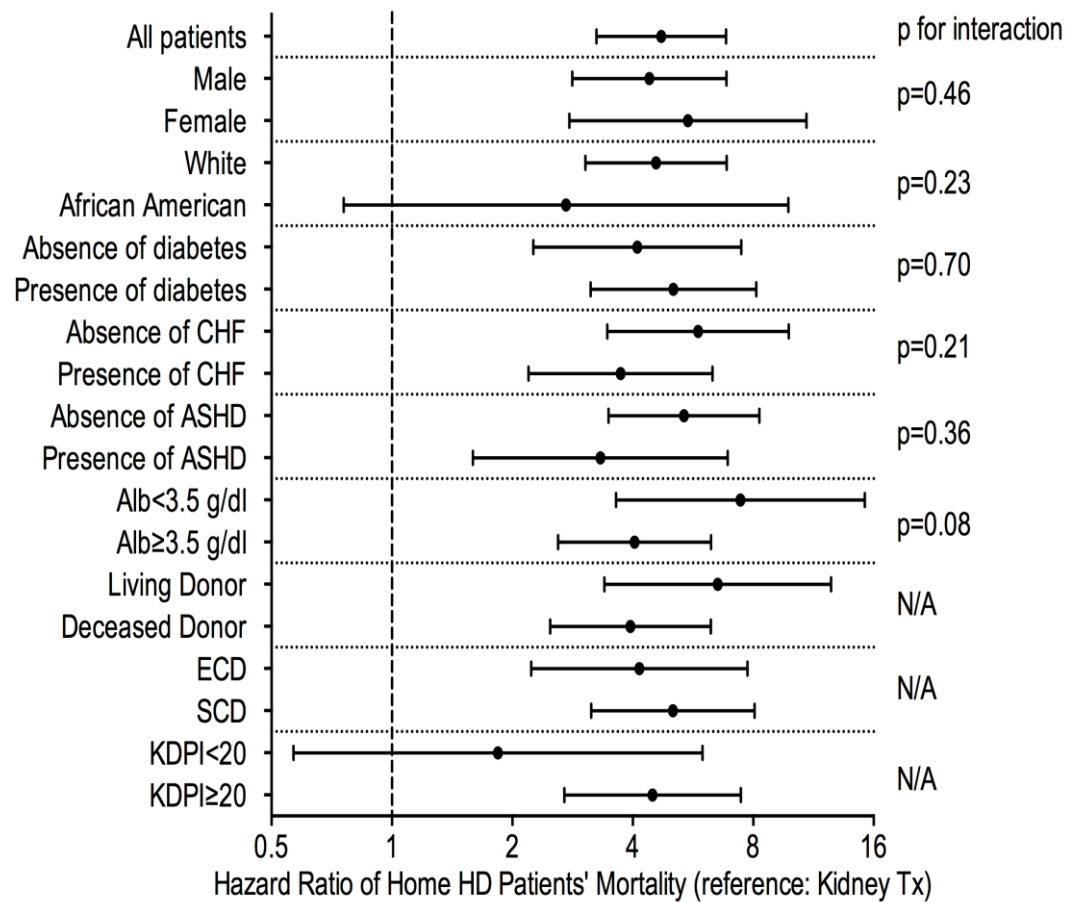
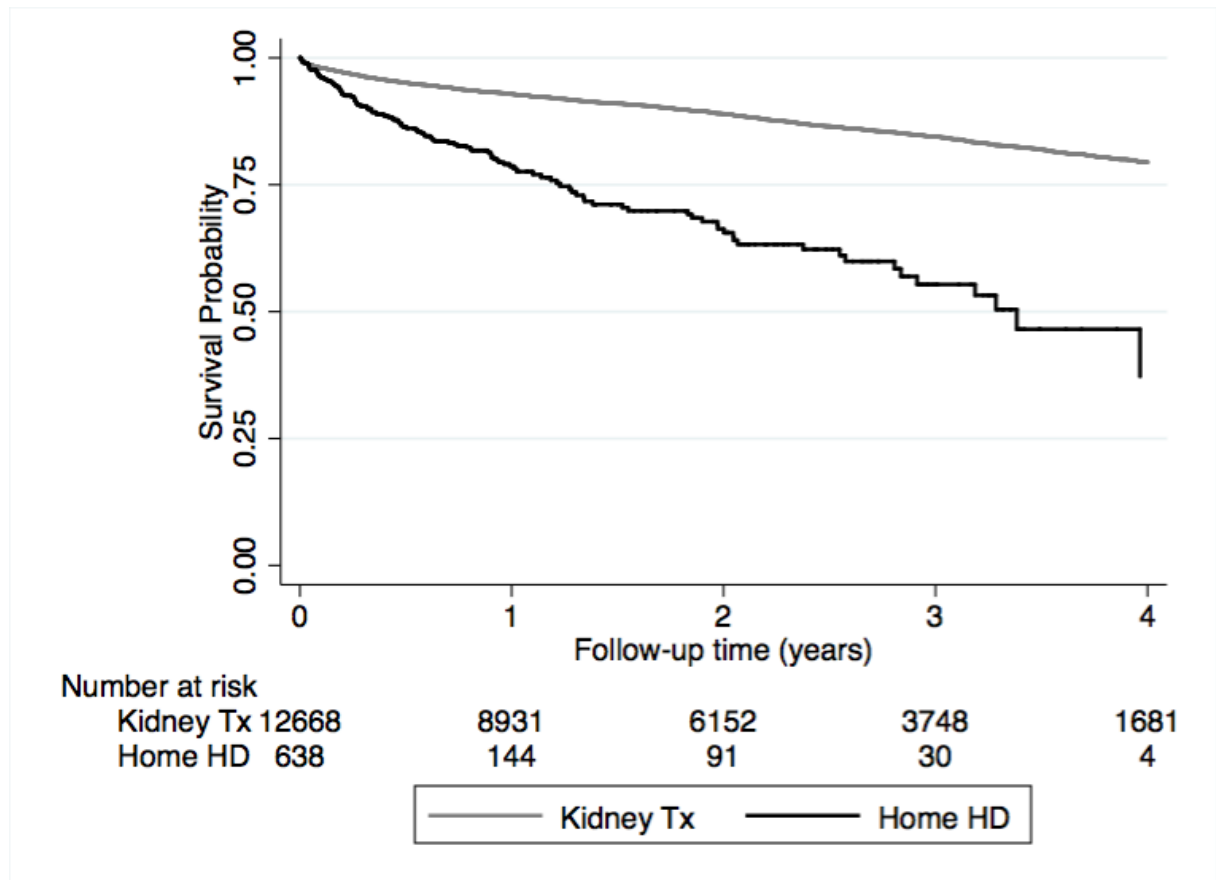


Figure S3:



**Figure S4:**

