

1 **Silicon amendment is involved in the induction of plant defense responses to a**  
2 **phloem feeder**

3

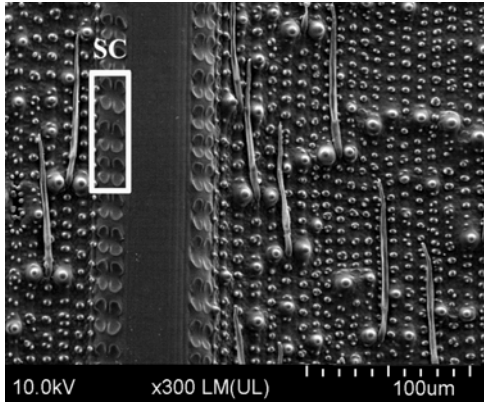
4 Lang Yang<sup>1,2</sup>, Yongqiang Han<sup>3</sup>, Pei Li<sup>1,2</sup>, Fei Li<sup>1,2</sup>, Shahbaz Ali<sup>1,2</sup>, and Maolin Hou<sup>1,2,\*</sup>

5

6 <sup>1</sup> State Key Laboratory for Biology of Plant Diseases and Insect Pests, Institute of  
7 Plant Protection, Chinese Academy of Agricultural Sciences, Beijing 100193, China

8 <sup>2</sup> Southern Regional Collaborative Innovation Center for Grain and Oil Crops in China,  
9 Changsha 410128, China

10 <sup>3</sup> Institute of Plant Protection of Hunan Province, Changsha 410125, China

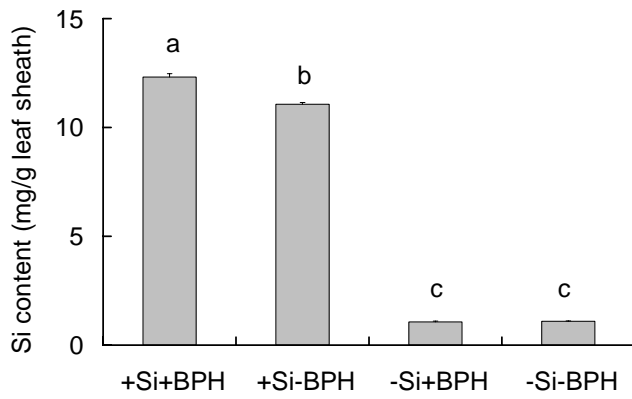


11

12 **Supplemental Figure S1.** Scanning electron micrographs (300 ×) of rice sheath surface showing silica cells (SC)

13 along the vein.

14



15

16 **Supplemental Figure S2.** Effect of Si amendment and BPH infestation on Si content. +Si = Si

17 amendment to rice plants at 112 mg Si/kg nutrient solution, -Si = no Si amendment. Error bars represent

18 1 × SE. n = 3 (biological replicates). Different letters over the bars denote significant difference at  $P <$

19 0.05 via Turkey's multiple range tests.