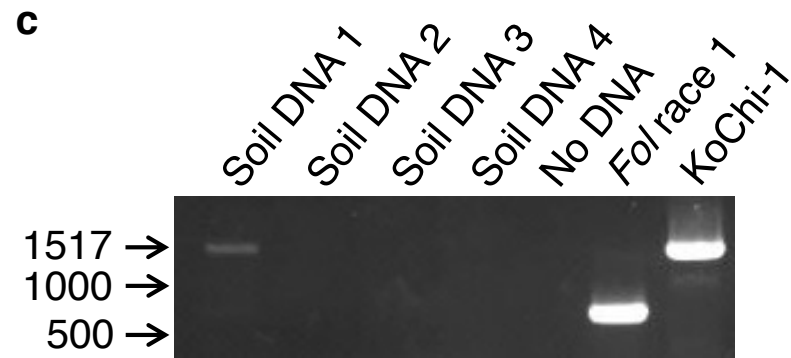
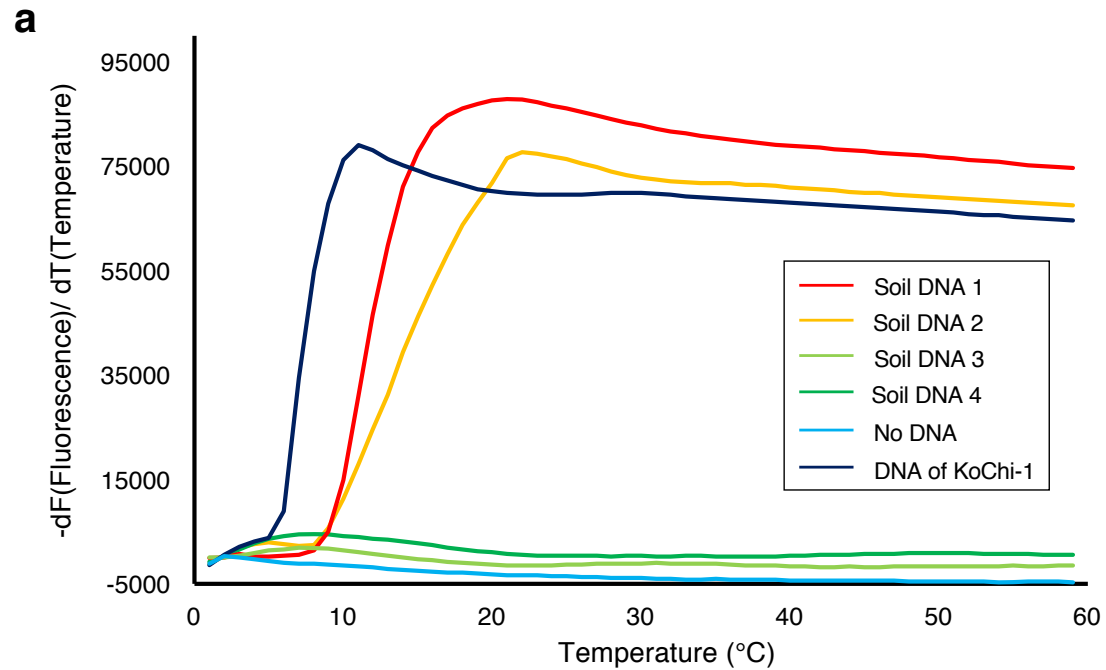


## **Supplementary information**

**Novel loop-mediated isothermal amplification (LAMP) assay with a universal QProbe can detect SNPs determining races in plant pathogenic fungi**

Yu Ayukawa, Saeri Hanyuda, Naoko Fujita, Ken Komatsu, Tsutomu Arie



### Supplementary Figure S1.

### Comparison of conventional LAMP (a) and PCR to detect *SIX3* (b) and *SIX4* (c) from field soil DNA

(a) Conventional LAMP with a *SIX4* primer set. (b and c) Agarose gel electrophoresis of PCR products amplified with *SIX3* primers (b) and *SIX4* primers (c).