

# Disruption of the monocarboxylate transporter-4-basigin interaction inhibits the hypoxic response, proliferation, and tumor progression – *Supplemental Figures*

Dillon M. Voss<sup>1</sup>, Raffaella Spina<sup>1</sup>, David L. Carter<sup>1</sup>, Kah Suan Lim<sup>2</sup>, Constance J. Jeffery<sup>3</sup>, and Eli E. Bar<sup>1,\*</sup>

<sup>1</sup>Department of Neurological Surgery, Case Western Reserve University School of Medicine and The Case Comprehensive Cancer Center, Cleveland, OH, USA

<sup>2</sup>Department of Radiation Oncology, Dana-Farber Cancer Institute, Boston, MA, USA

<sup>3</sup>Department of Biological Sciences, The University of Illinois at Chicago, Chicago, IL, USA

Conflict of interest statement: The authors have declared that no conflict of interest exists

## \* Lead Contact:

Eli E. Bar, PhD

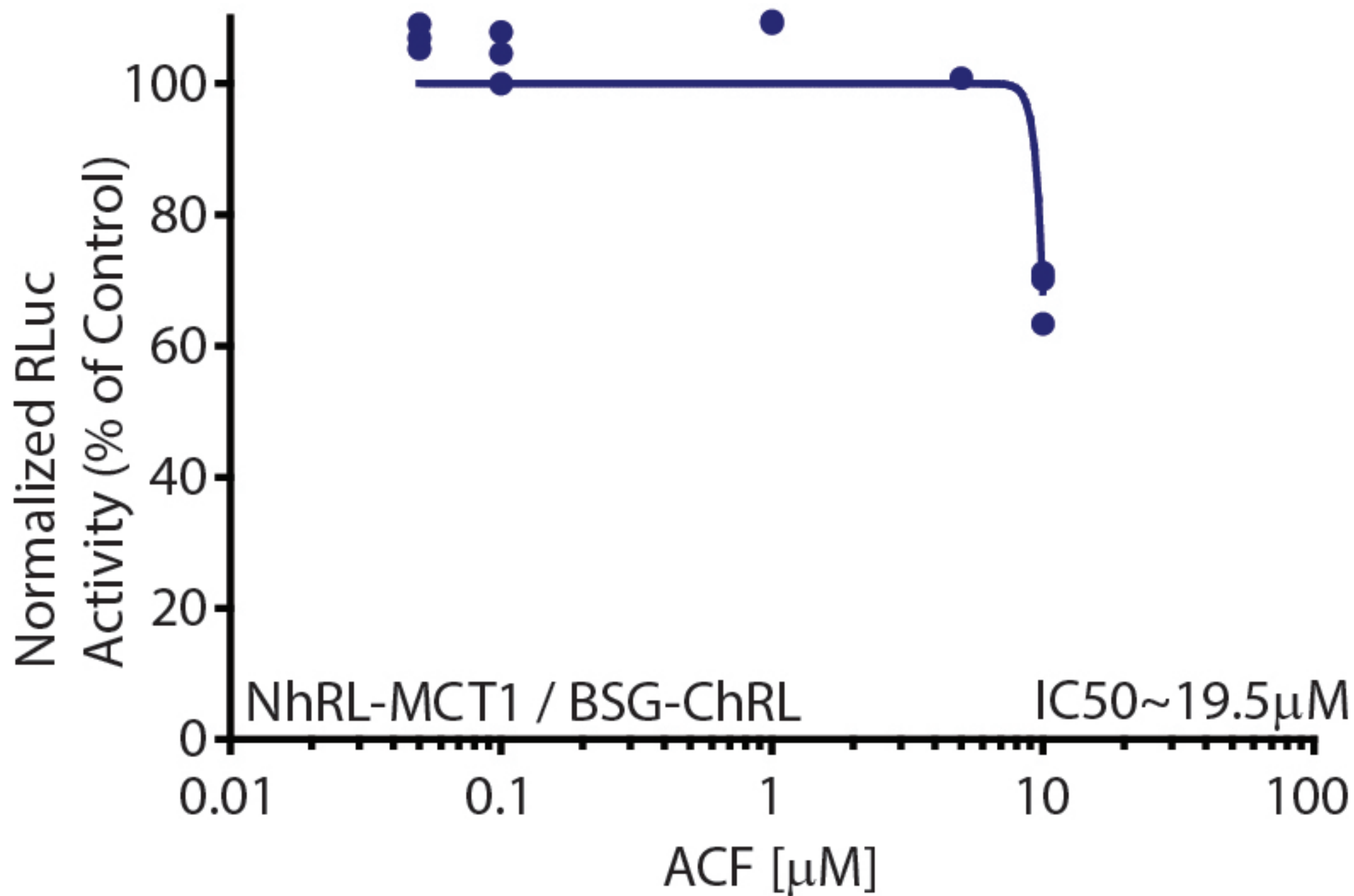
Assistant Professor, Department of Neurological Surgery, School of Medicine, Case Western Reserve University and The Case Comprehensive Cancer Center, OH

Adjunct Assistant Professor, Johns Hopkins University School of Medicine, MD

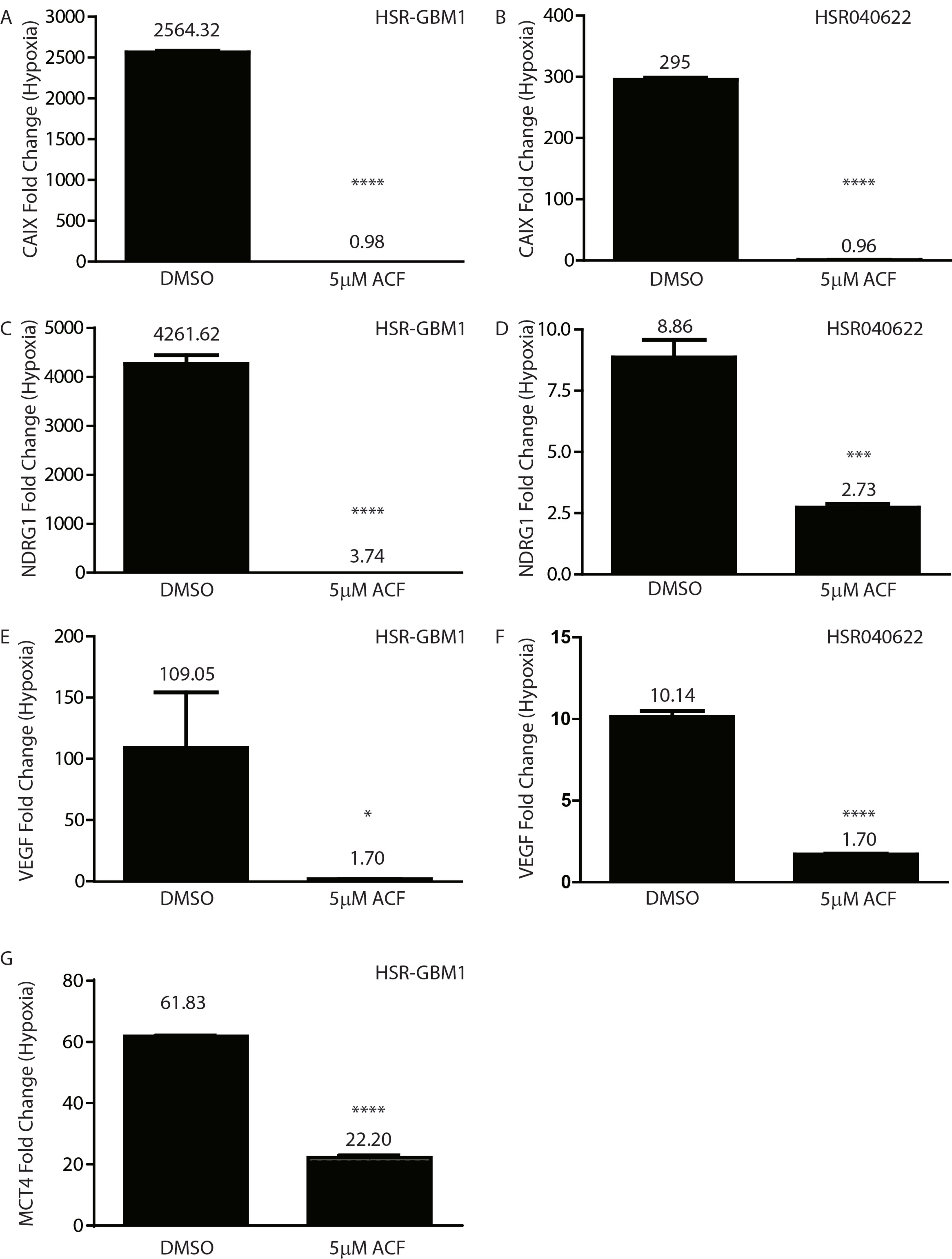
Adjunct Staff, Department Stem Cell Biology and Regenerative Medicine, Lerner Research Institute, Cleveland Clinic, OH

## Mailing Address:

Case Western Reserve University  
Department of Neurological Surgery  
Robbins Building, Room E750A  
10900 Euclid Avenue  
Cleveland OH, 44106-4938  
Office (216) 368-0933  
Fax (216) 368-1144  
E-mail: eli.bar@case.edu



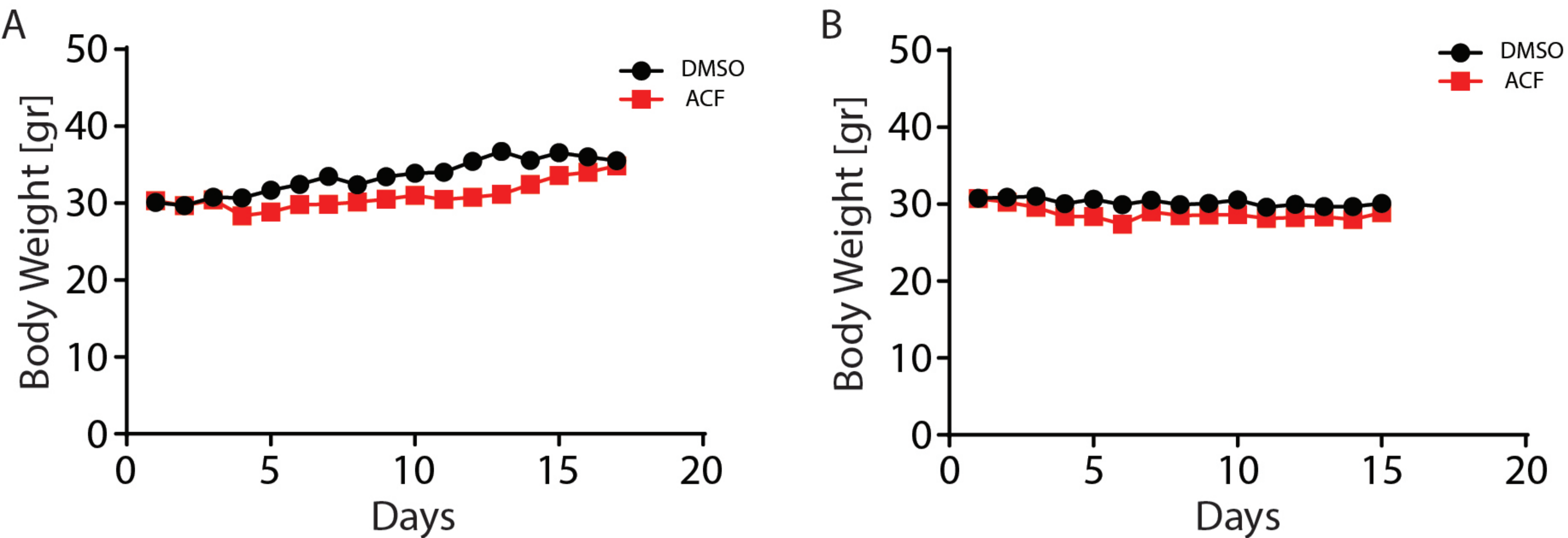
Supplemental Figure S1. Dose dependency curve for NhRL-MCT1 and BSG-ChRL interaction. IC50 = 19.5 $\mu\text{M}$ .



Supplemental Figure S2. ACF inhibits HIF-1 transcriptional activity in GSC lines. Mean +/- SEM is plotted (n=3).

\* P&lt;0.05 ; \*\*\* P&lt;0.001 ; \*\*\*\* P&lt;0.0001 (two-tailed student's t test)





Supplemental Figure S3. Body weights of tumor-bearing mice treated with vehicle or ACF. (A) Weights of tumor-bearing mice from Figure 4A that were treated with vehicle (black) or ACF (red) were measured. Mean + SEM ( $n = 8$  and  $7$ , respectively) is shown. (B) weights of tumor-bearing mice from Figure 5A that were treated with vehicle (black) or ACF (red) were measured. Mean + SEM ( $n = 11$ , and  $12$ , respectively) is shown.