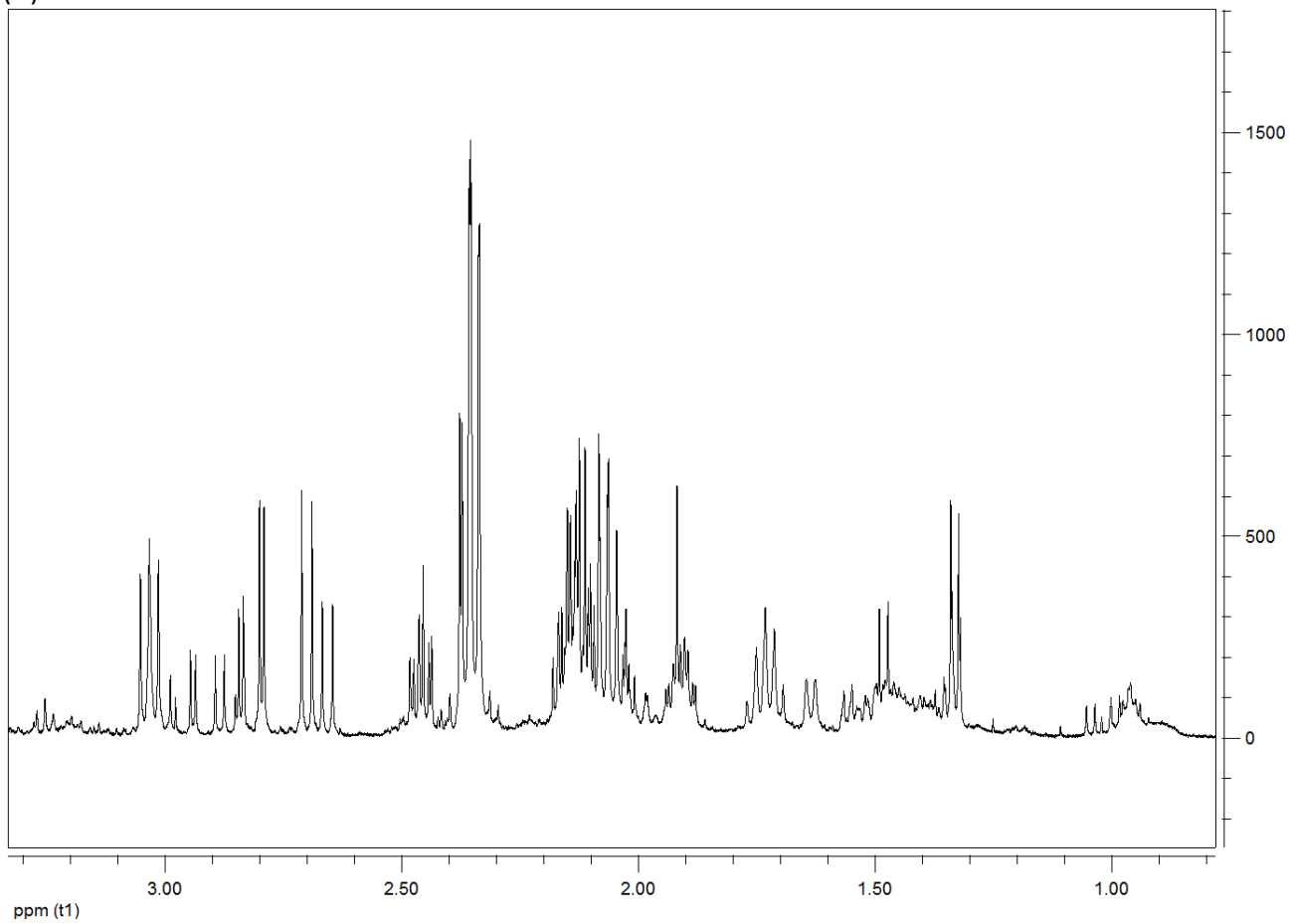
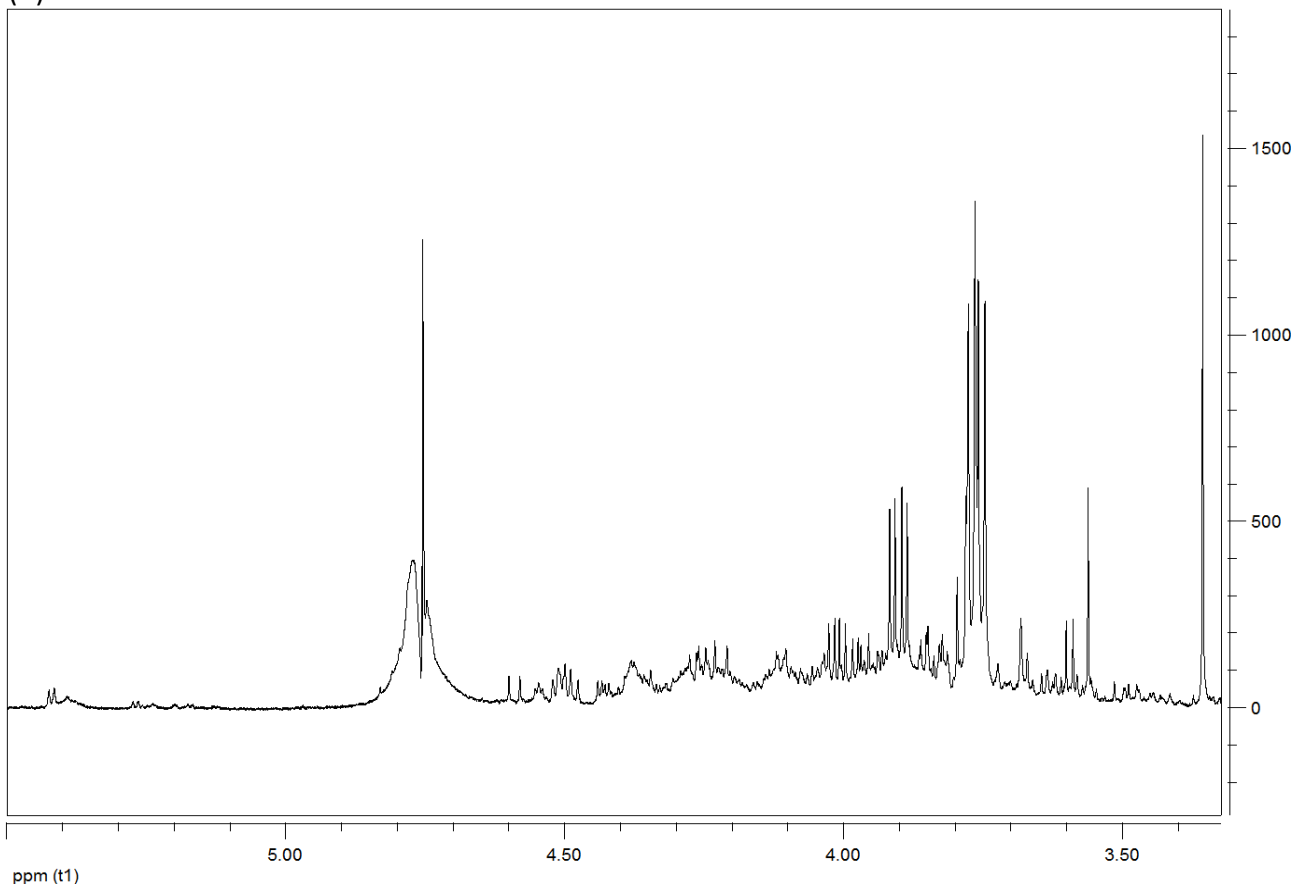


(A)



(B)



(C)

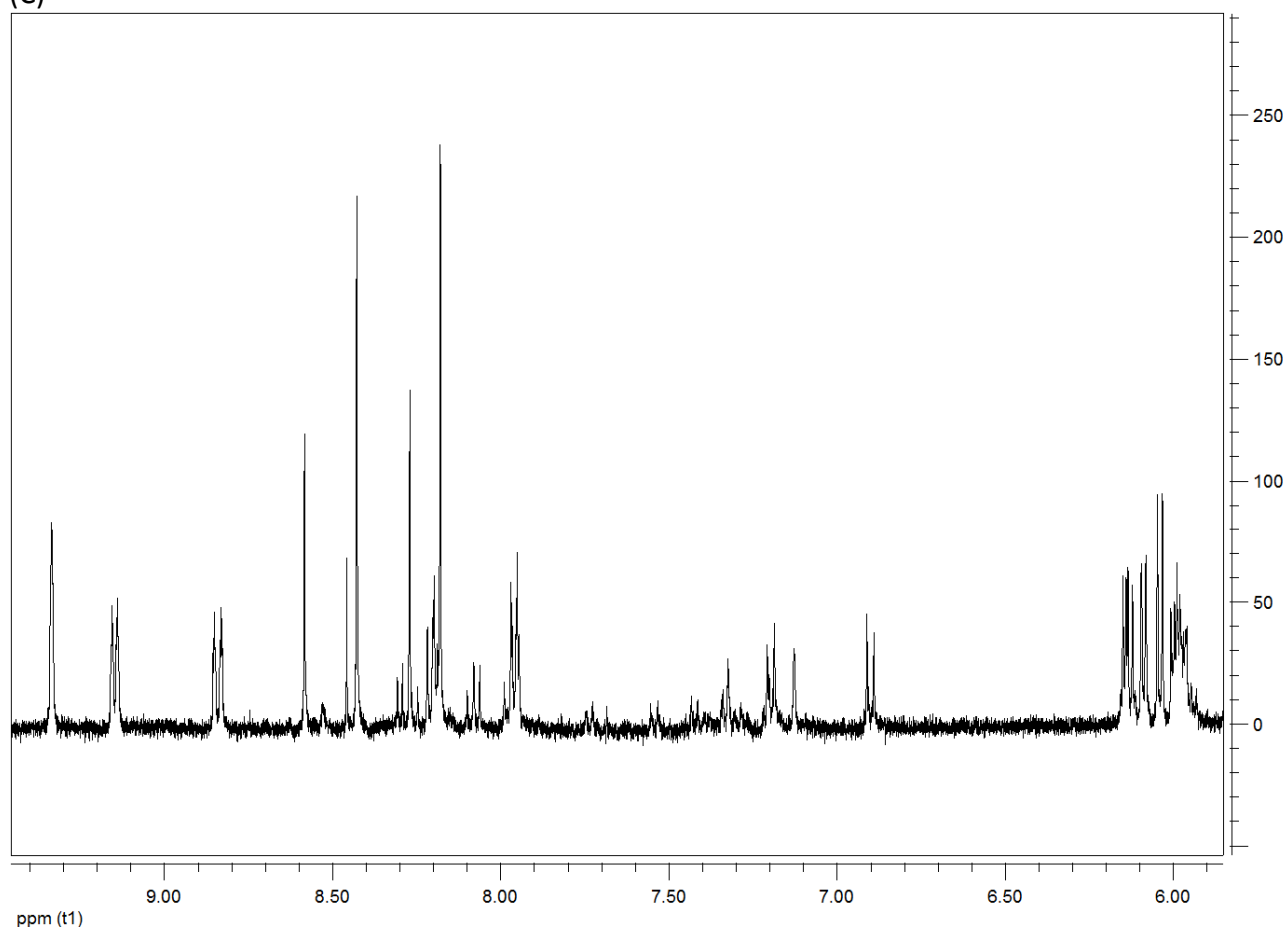


Fig. S3. Typical ^1H NMR spectrum of *L. delbrueckii* 23 cell extracts. Spectral region: (A) from 0.8 to 3.3 ppm, (B) from 3.3 ppm to 6.0 ppm and (C) from 6.0 ppm to 9.5 ppm (the intensity of the spectrum has been increased x 4).