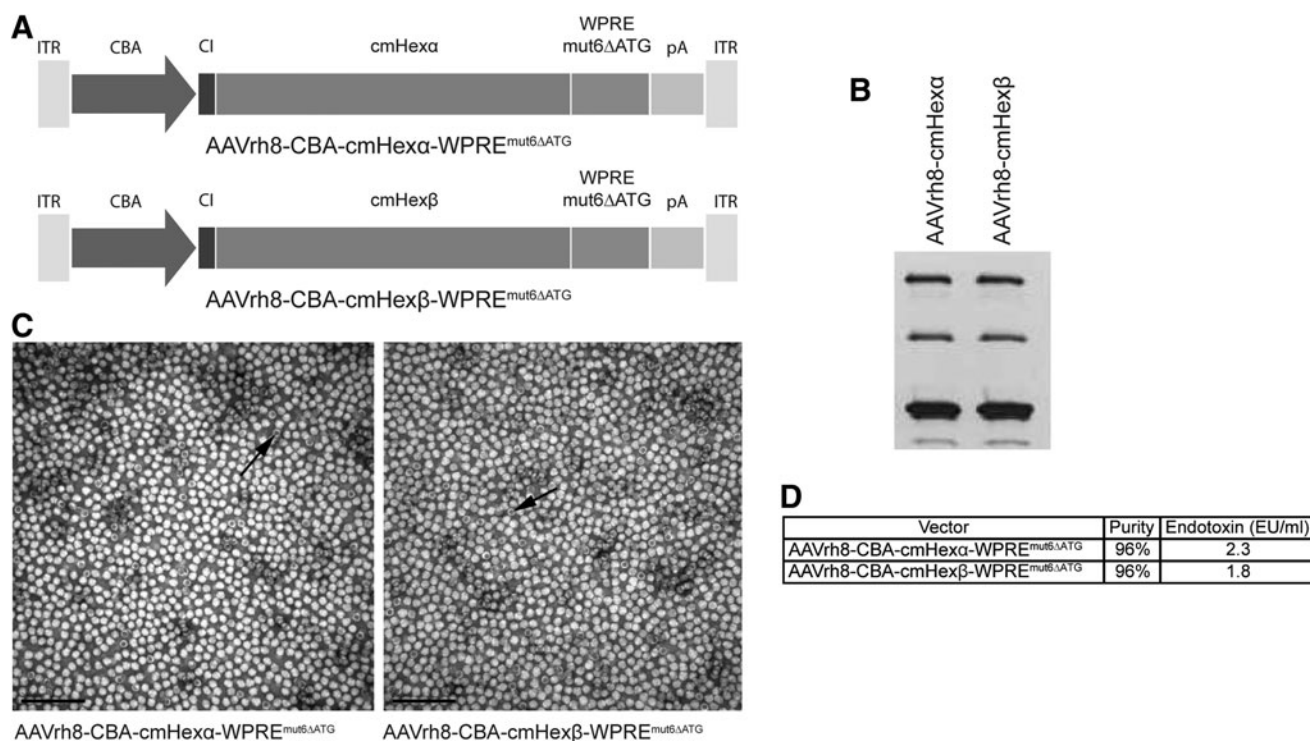


Supplementary Data



Supplementary Figure S1. Characterization of AAVrh8 vectors. **(A)** Schematic of the two AAVrh8 vectors used in this study. ITR, inverted terminal repeat; CBA, CMV enhancer fused to chicken β -actin promoter; CI, chimeric intron; cm, cynomolgus macaque; Hex, hexosaminidase; WPRE^{mut6 Δ ATG}, modified woodchuck hepatitis virus posttranscriptional regulatory element; pA, bovine growth hormone polyadenylation site. **(B)** Silver stain on AAVrh8 viral preparations. **(C)** Electron microscopy of AAVrh8 preparations detected by negative stain. Darkly stained structures indicate empty viral capsids (*arrows*). **(D)** AAVrh8 preparation purity determined by densitometry of silver stain in **(B)**, as well as endotoxin levels measured in AAVrh8 preparations.