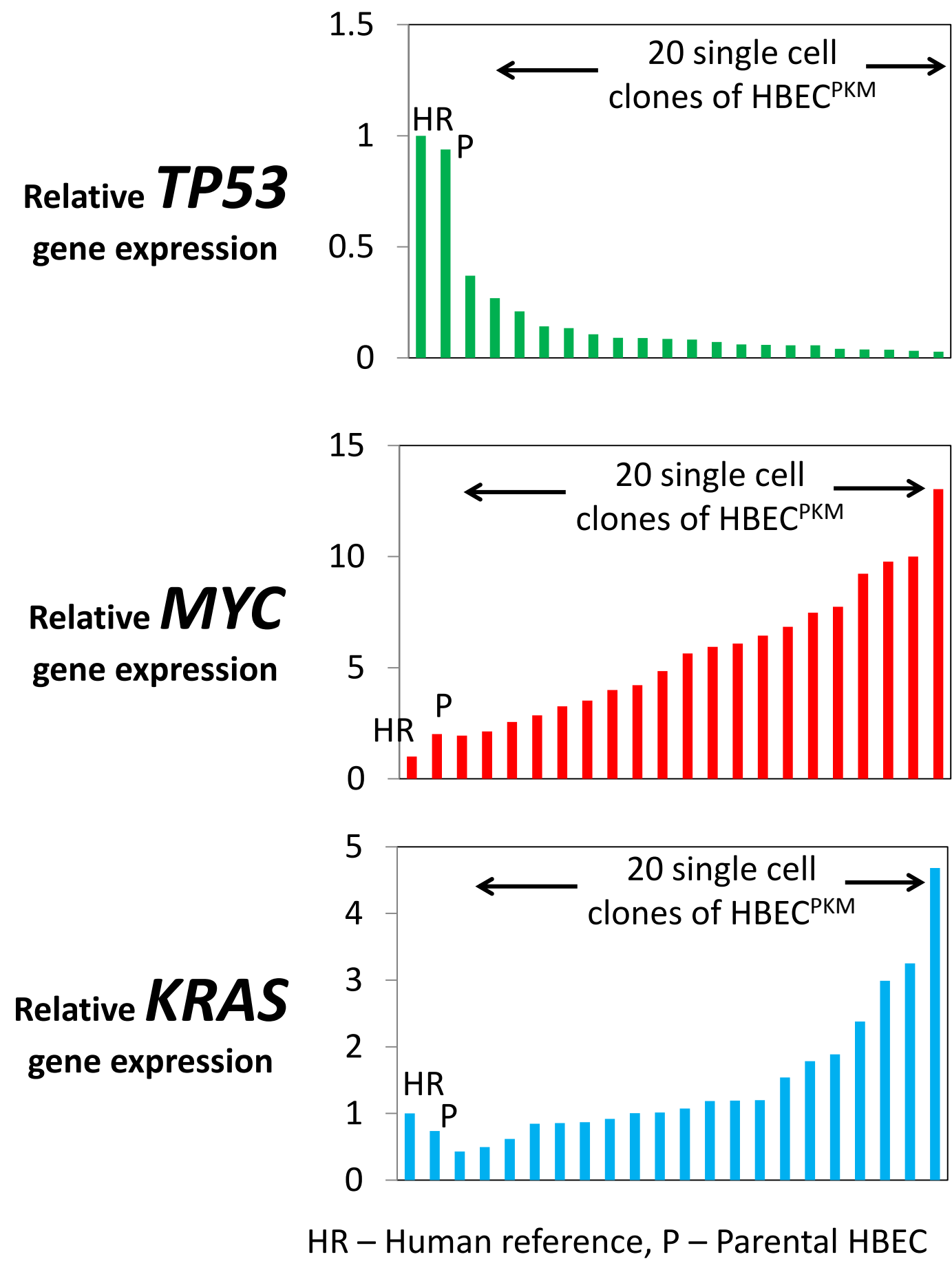
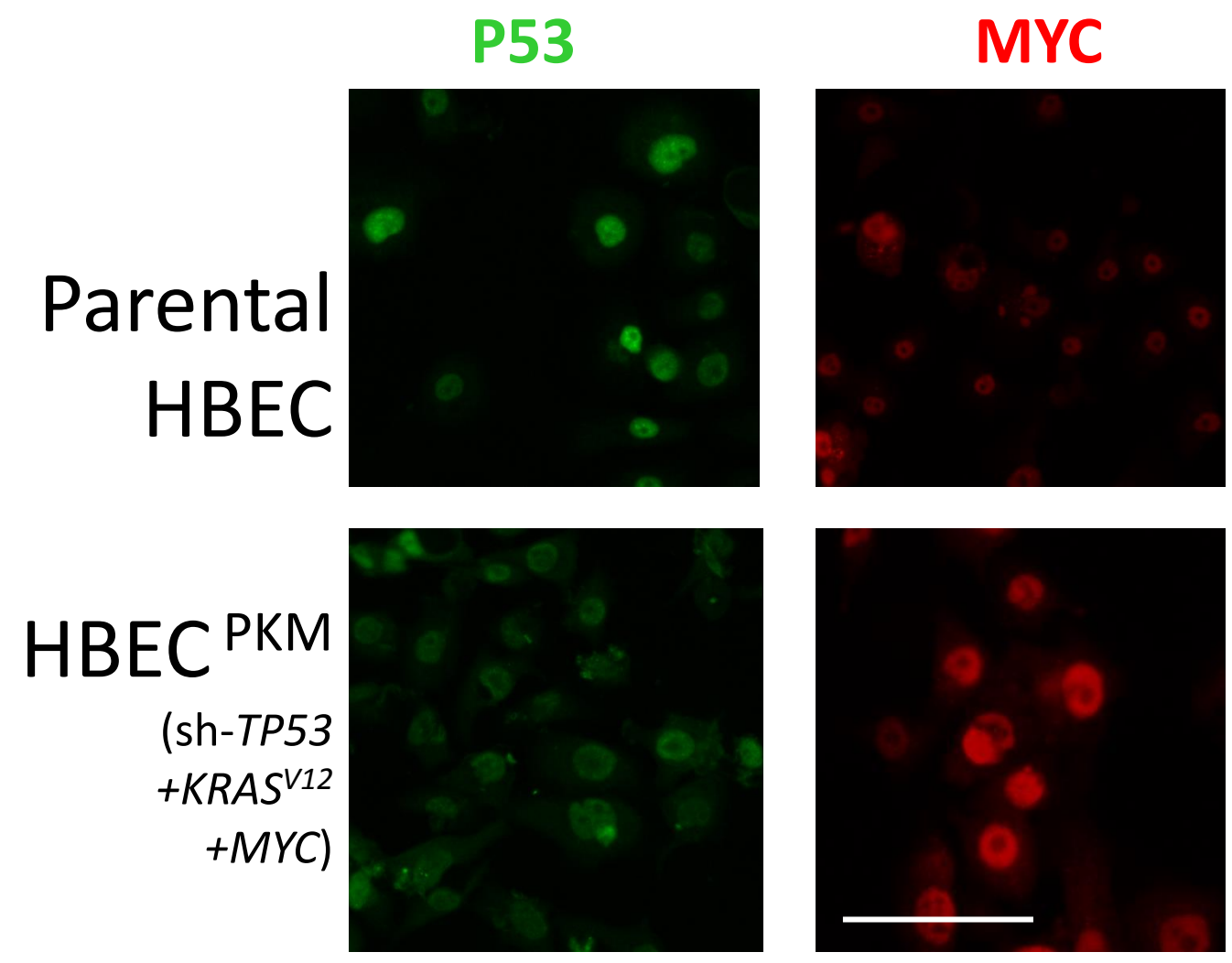


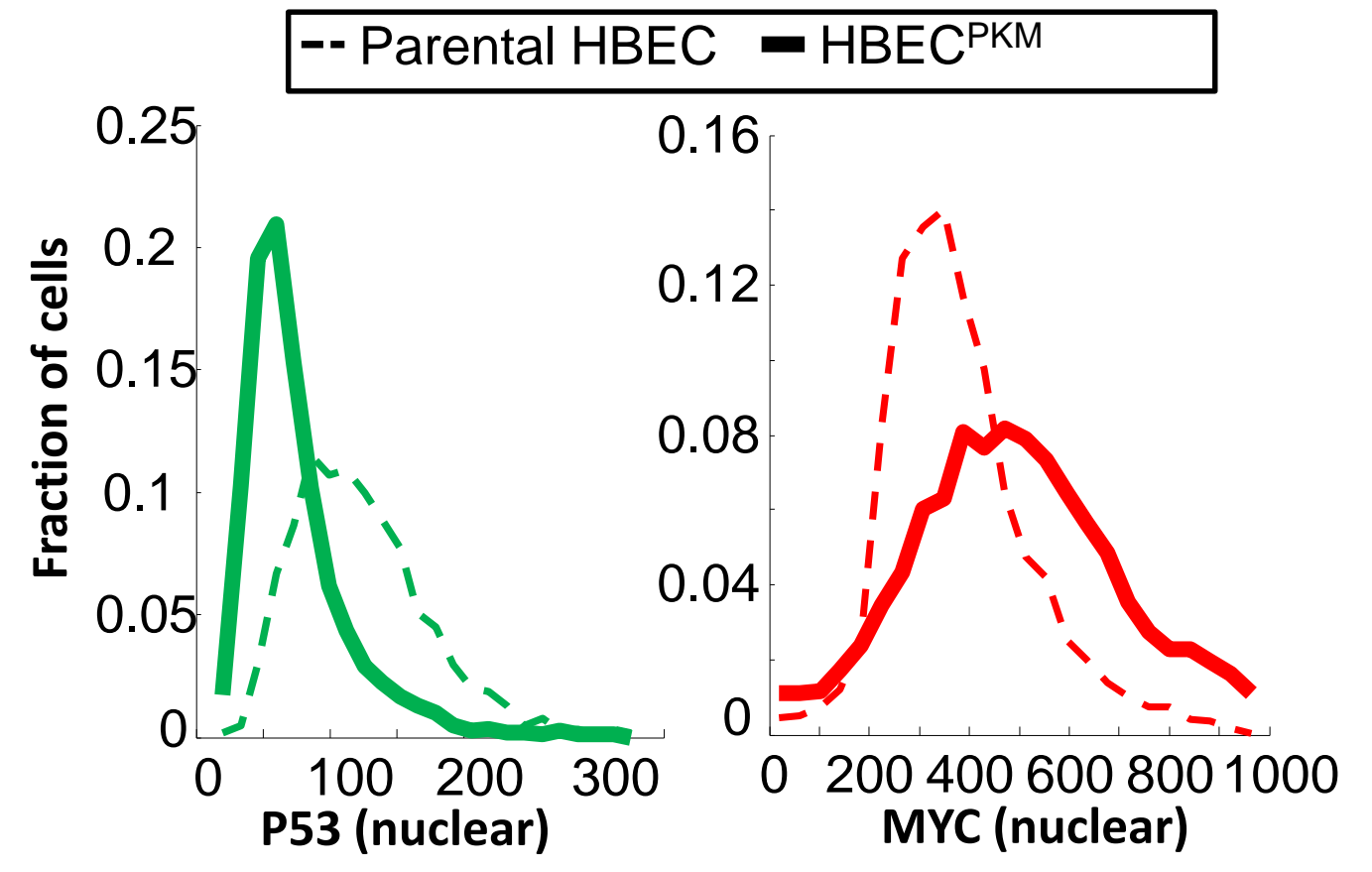
A mRNA Expression Levels



B Protein Expression Levels

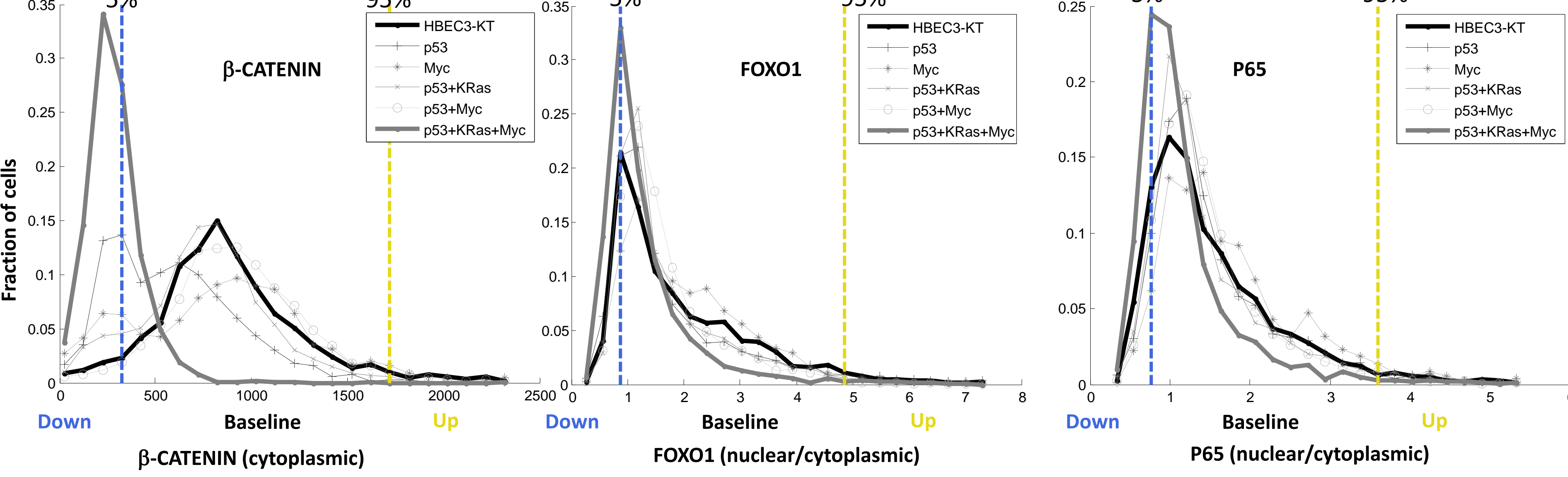


C Quantitation of protein expression

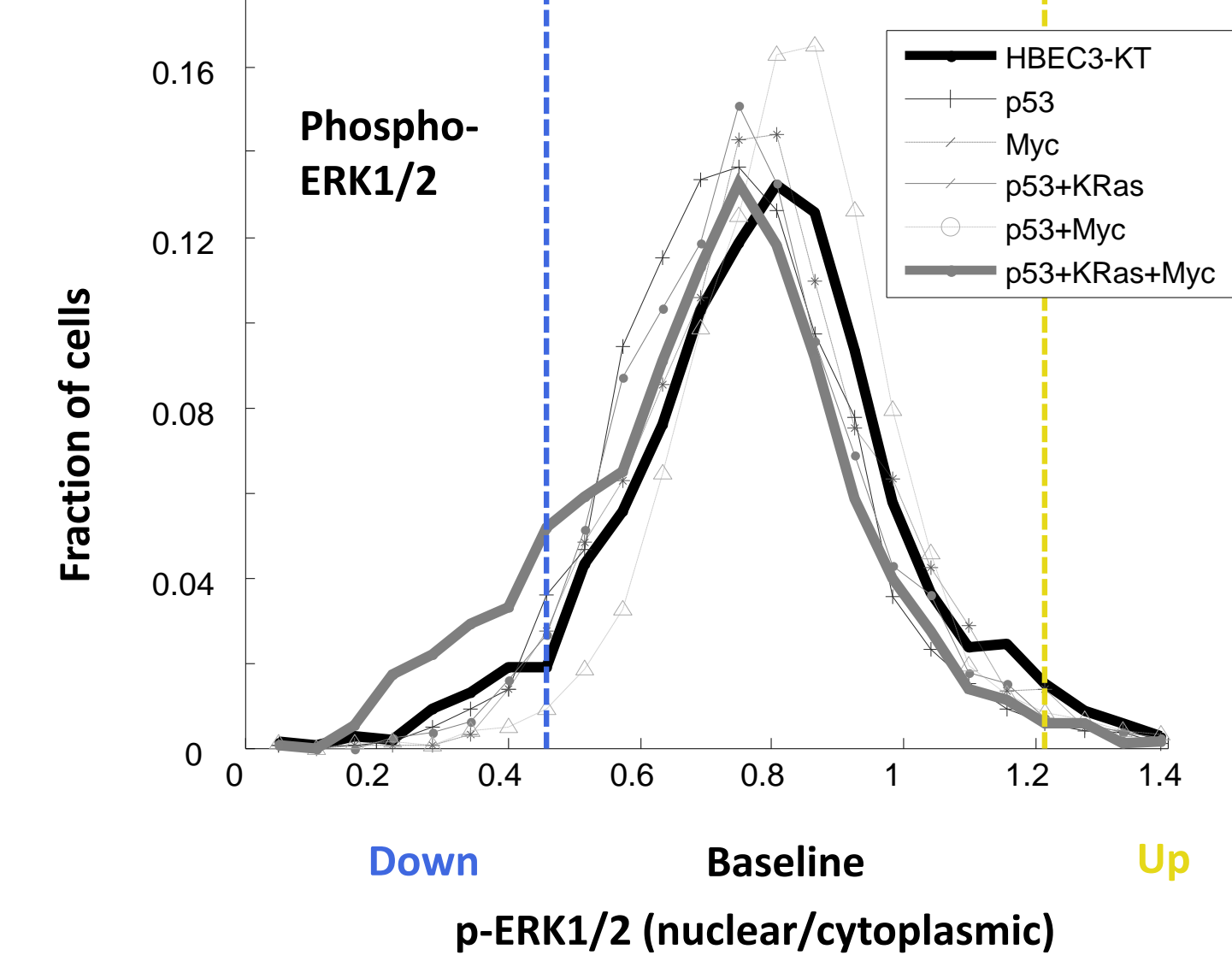


Supplementary Figure 2

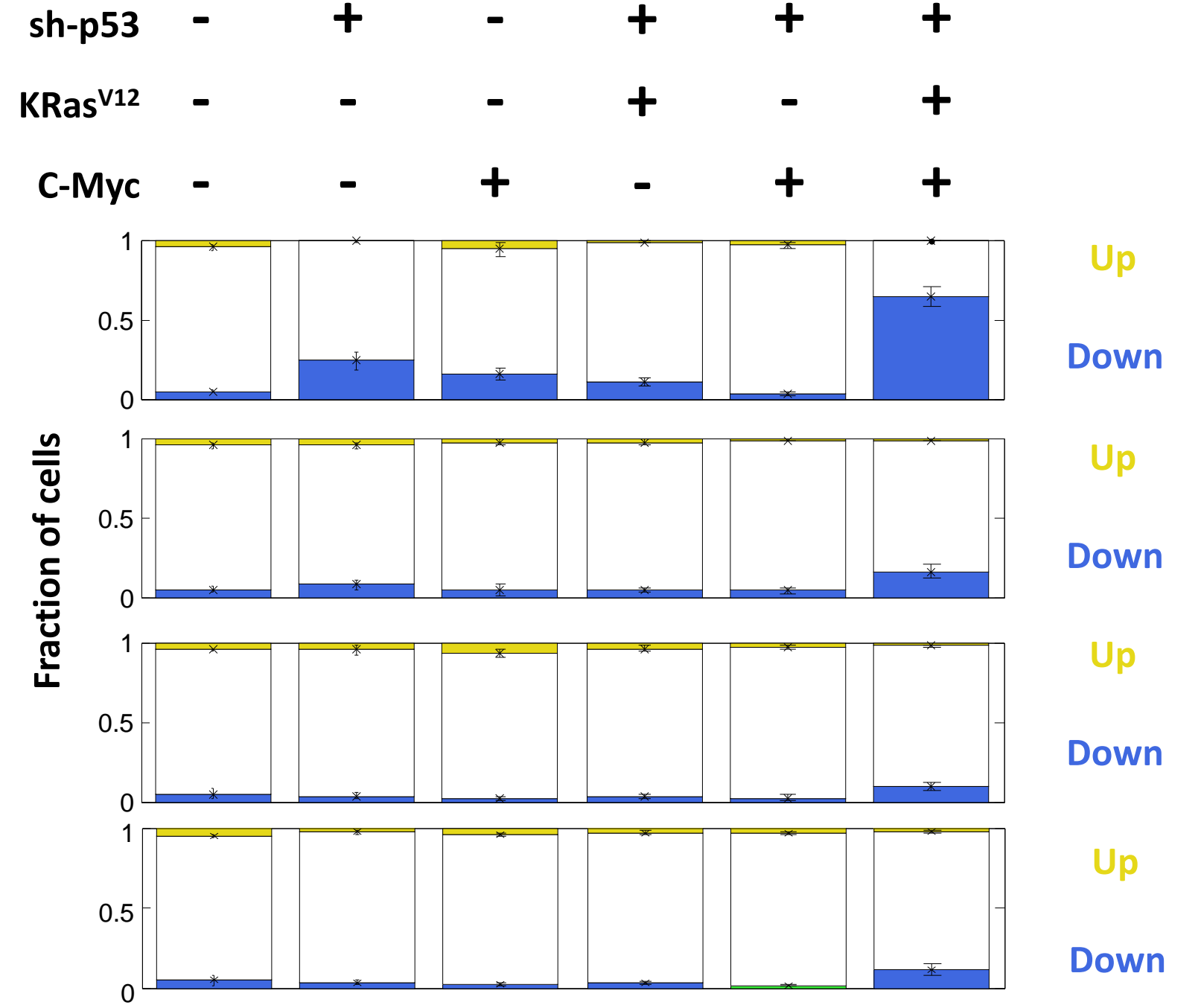
A



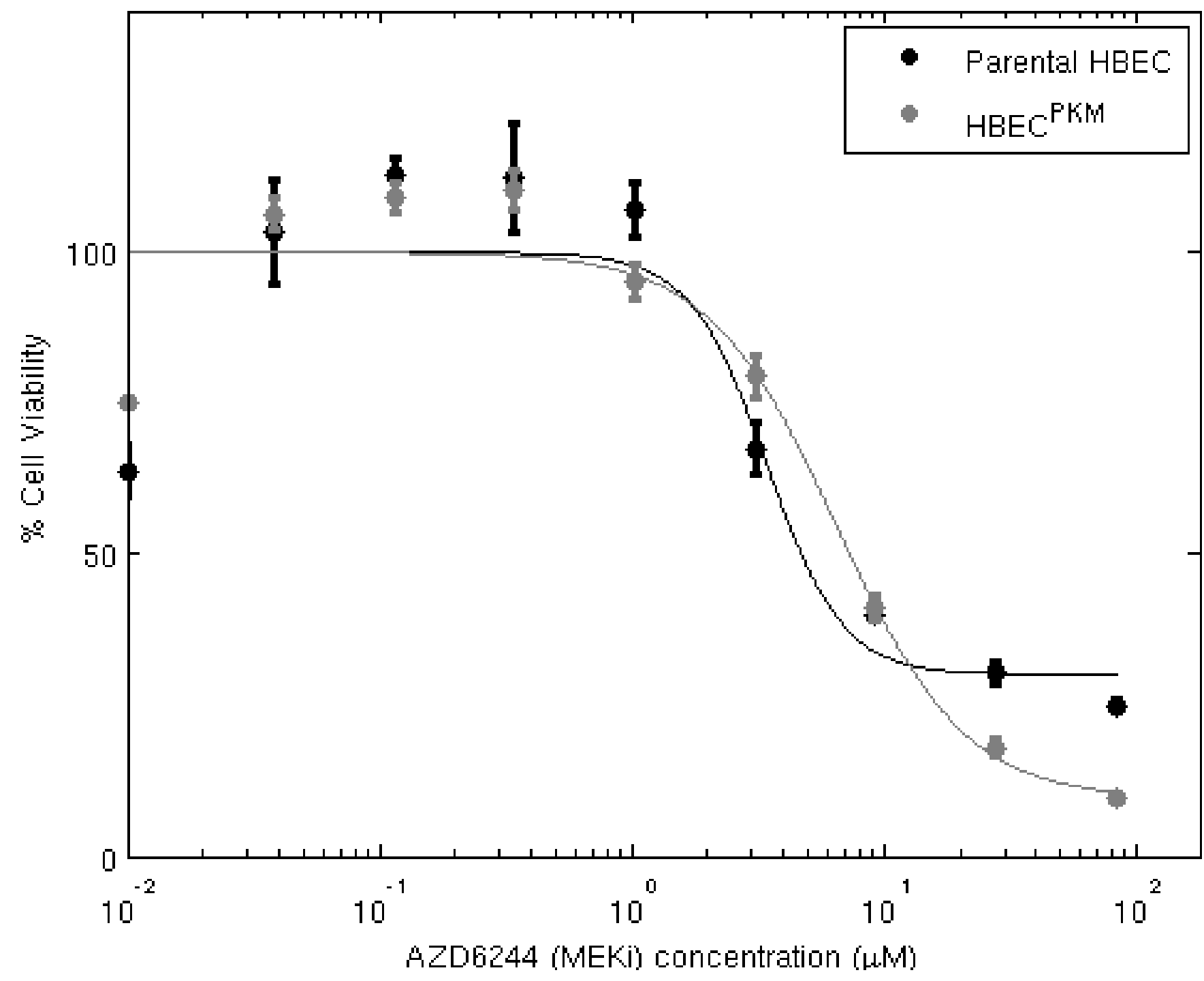
B



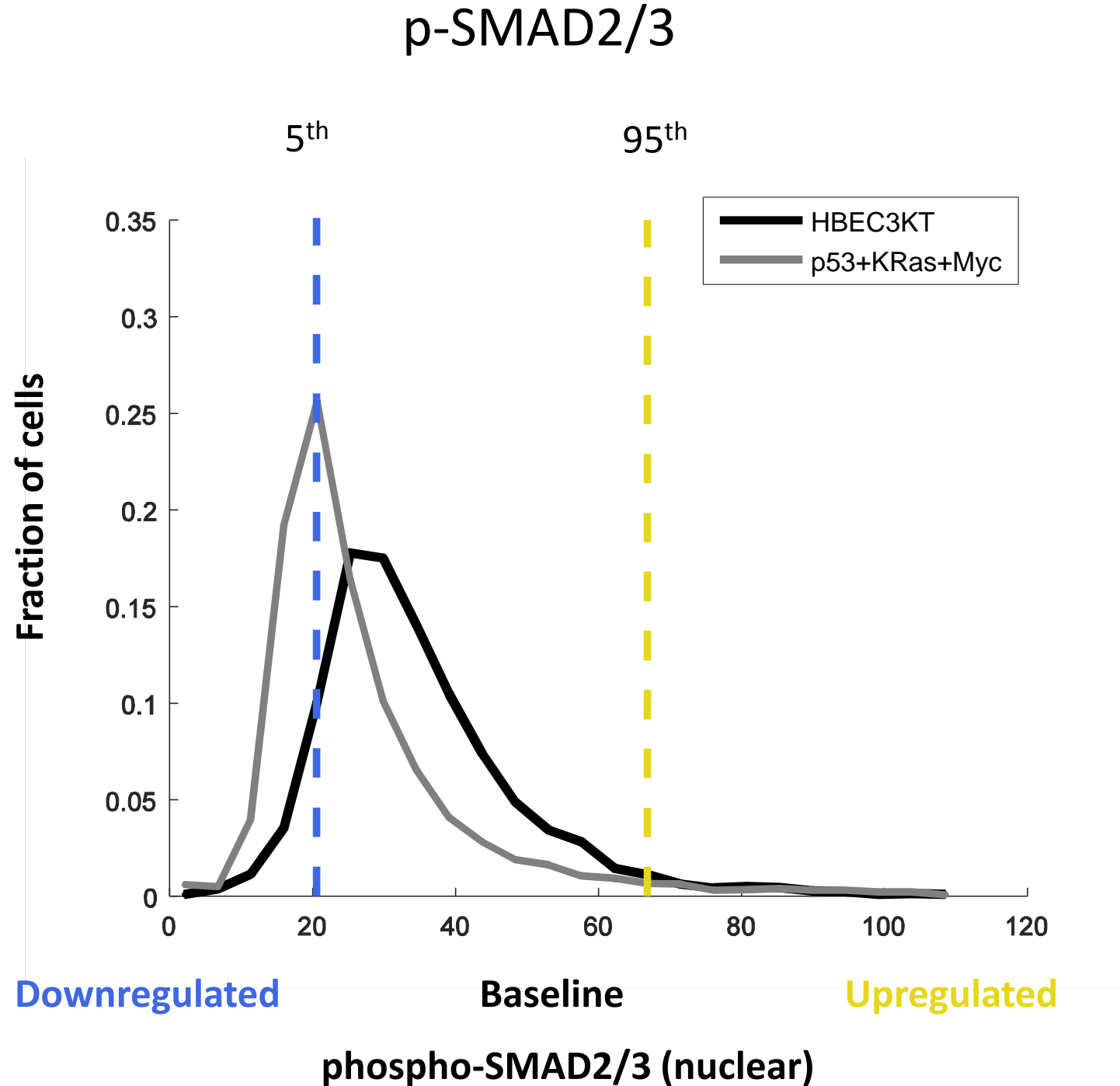
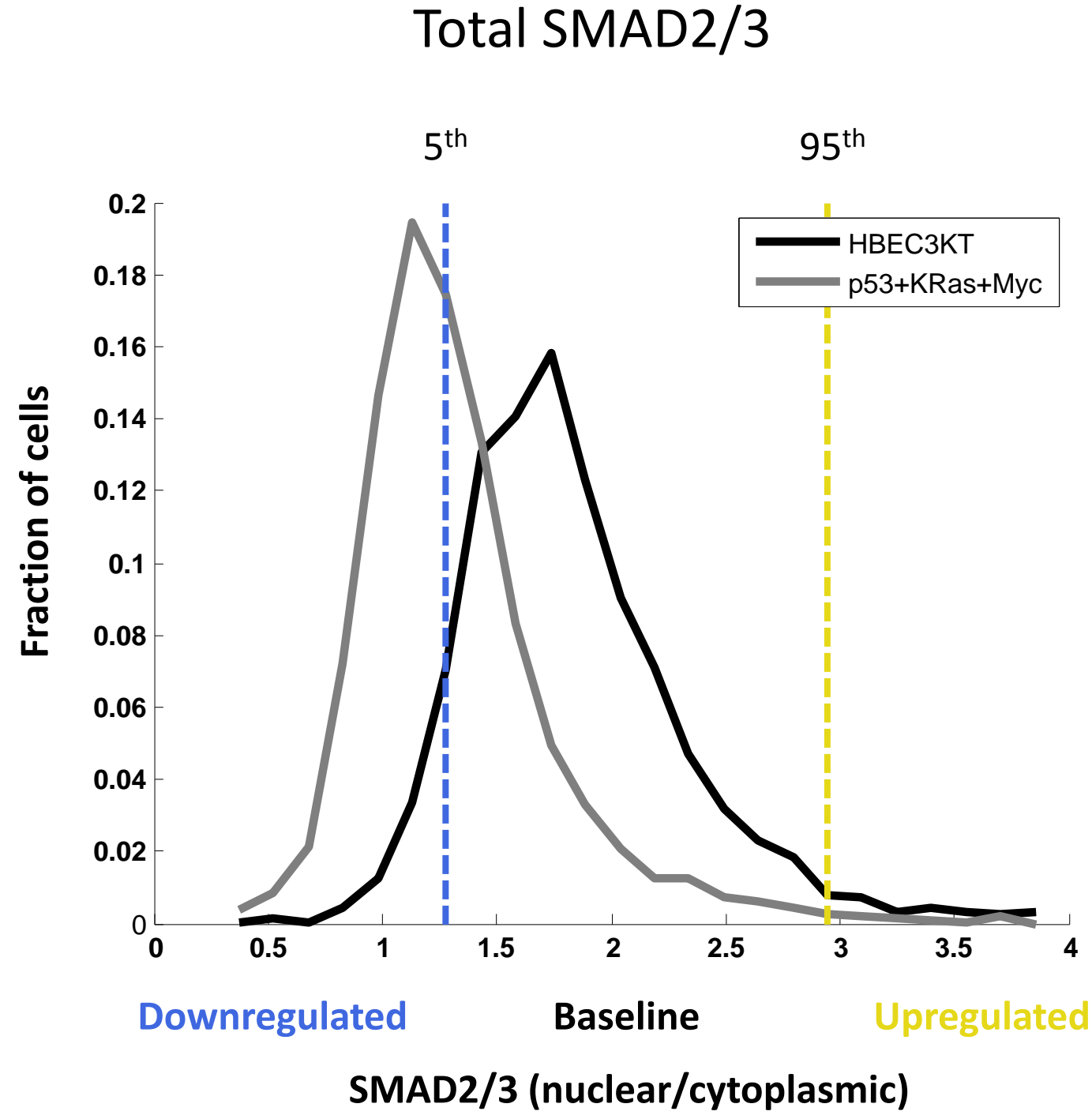
C



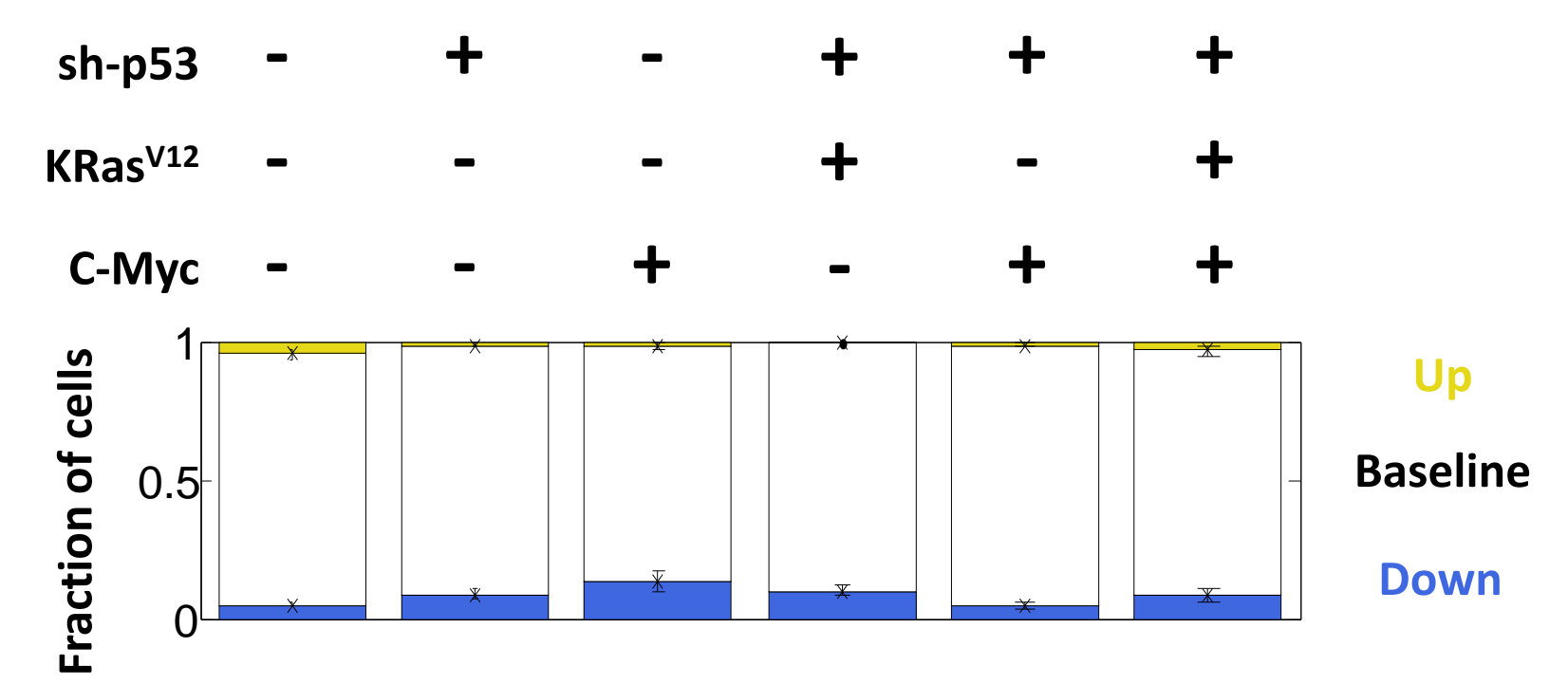
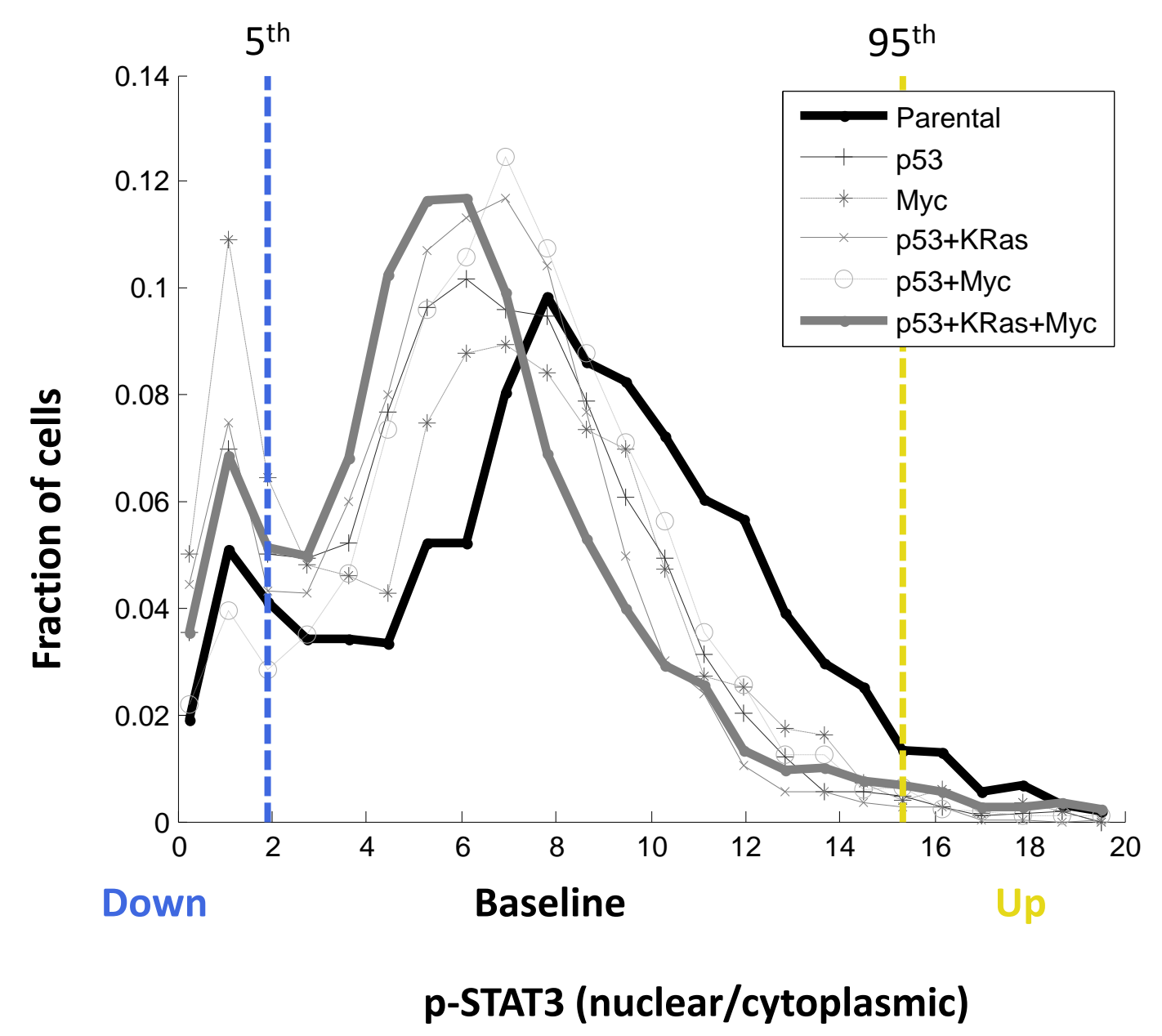
Supplementary Figure 3



Supplementary Figure 4

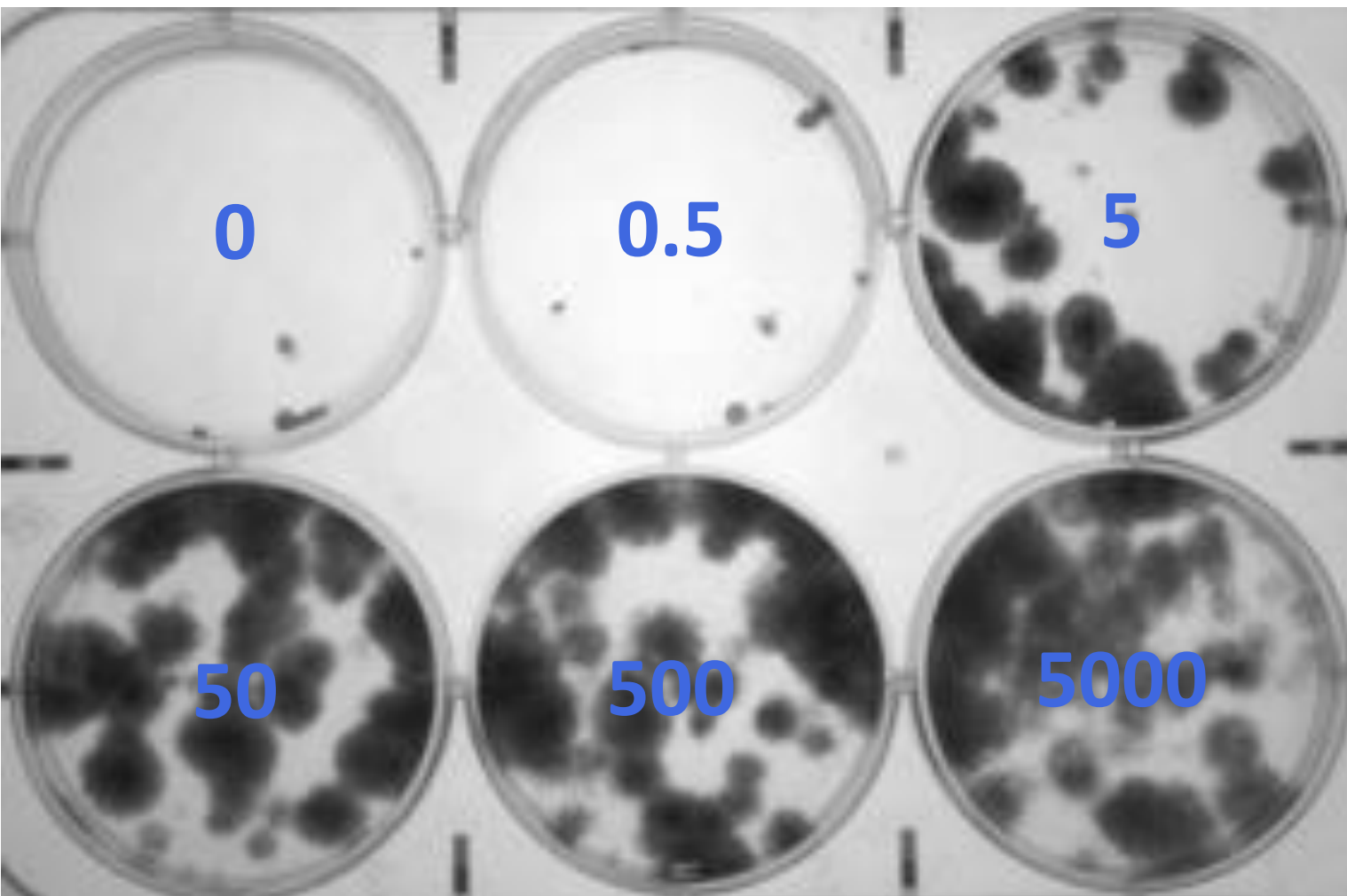


Supplementary Figure 5

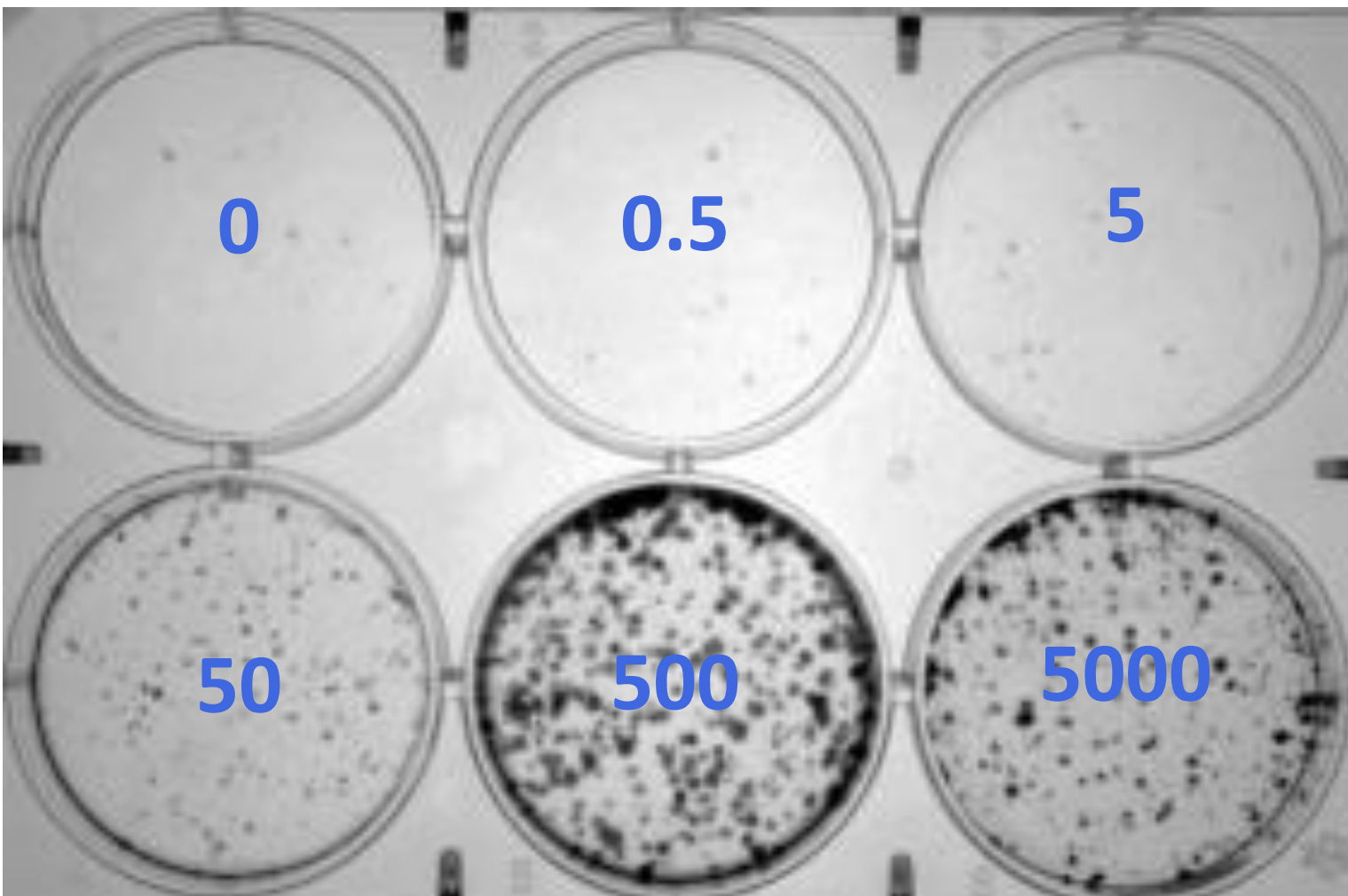


High EGF (5 ng/mL) growth condition

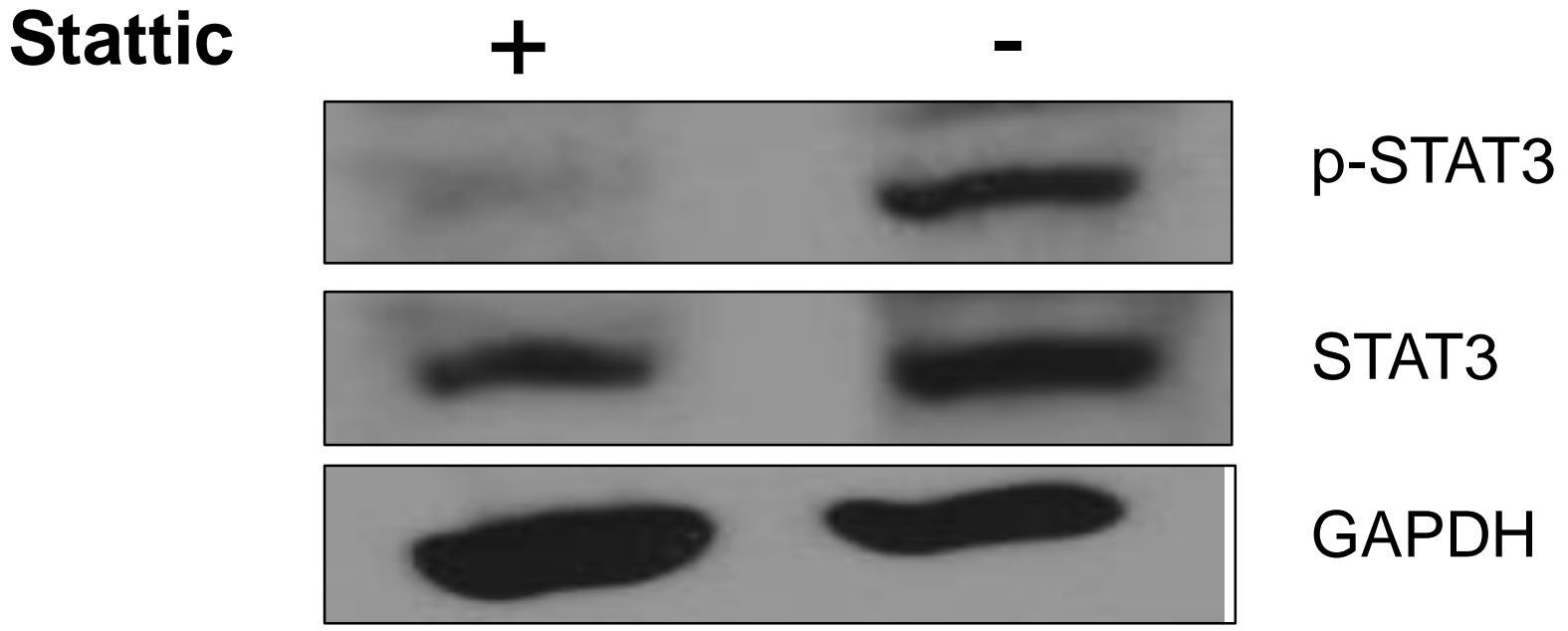
Parental HBEC



HBEC^{PKM}

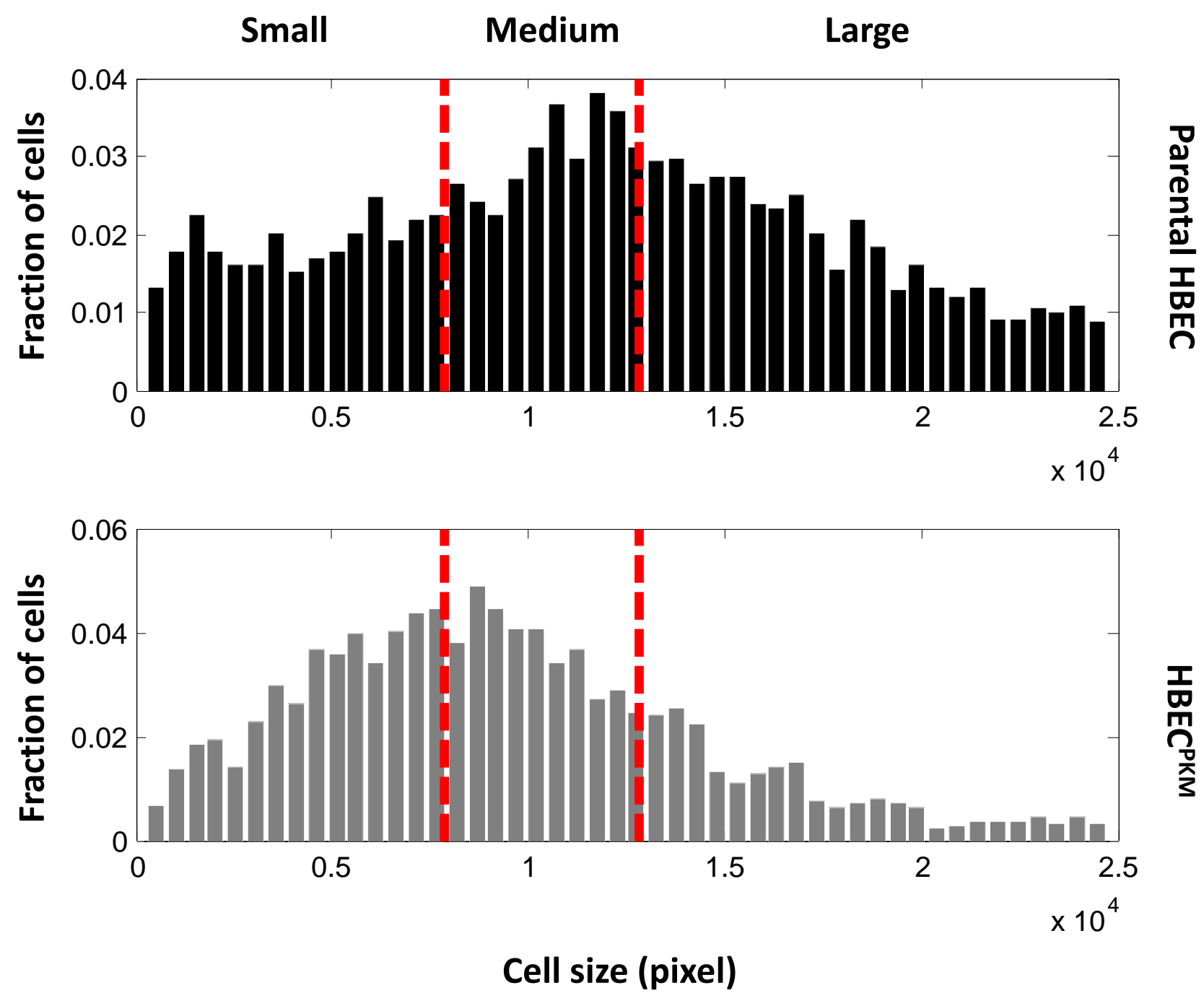


Supplementary Figure 7

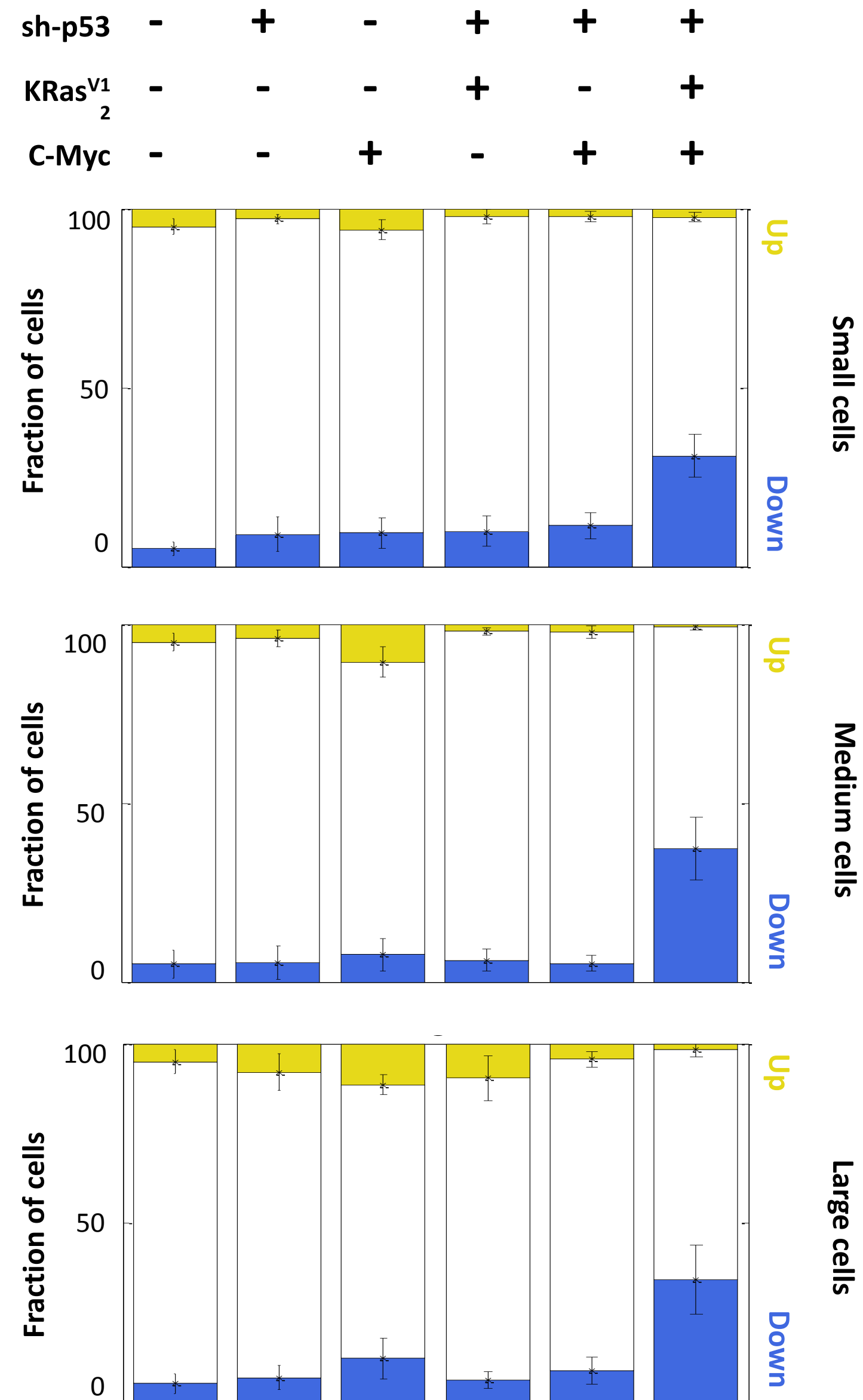


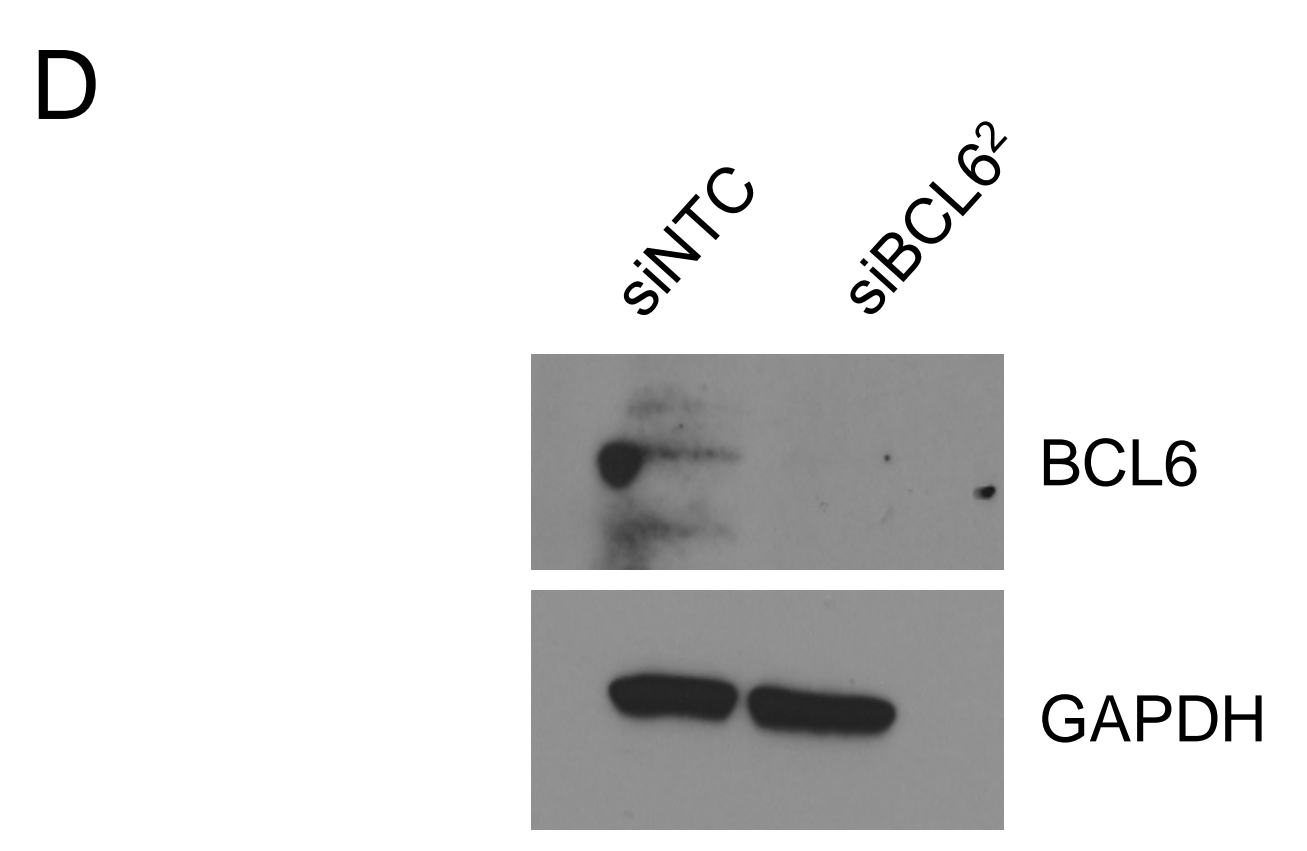
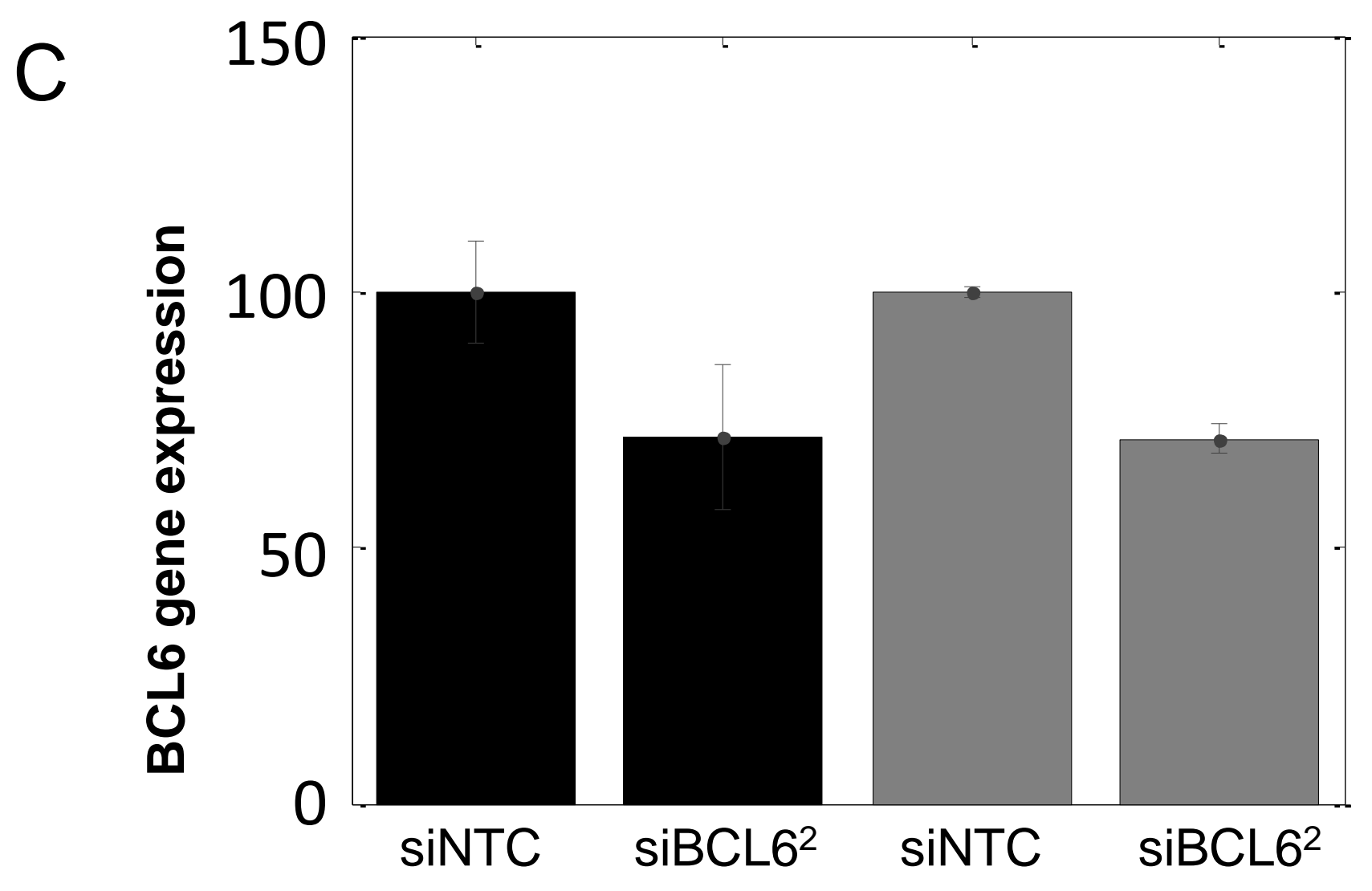
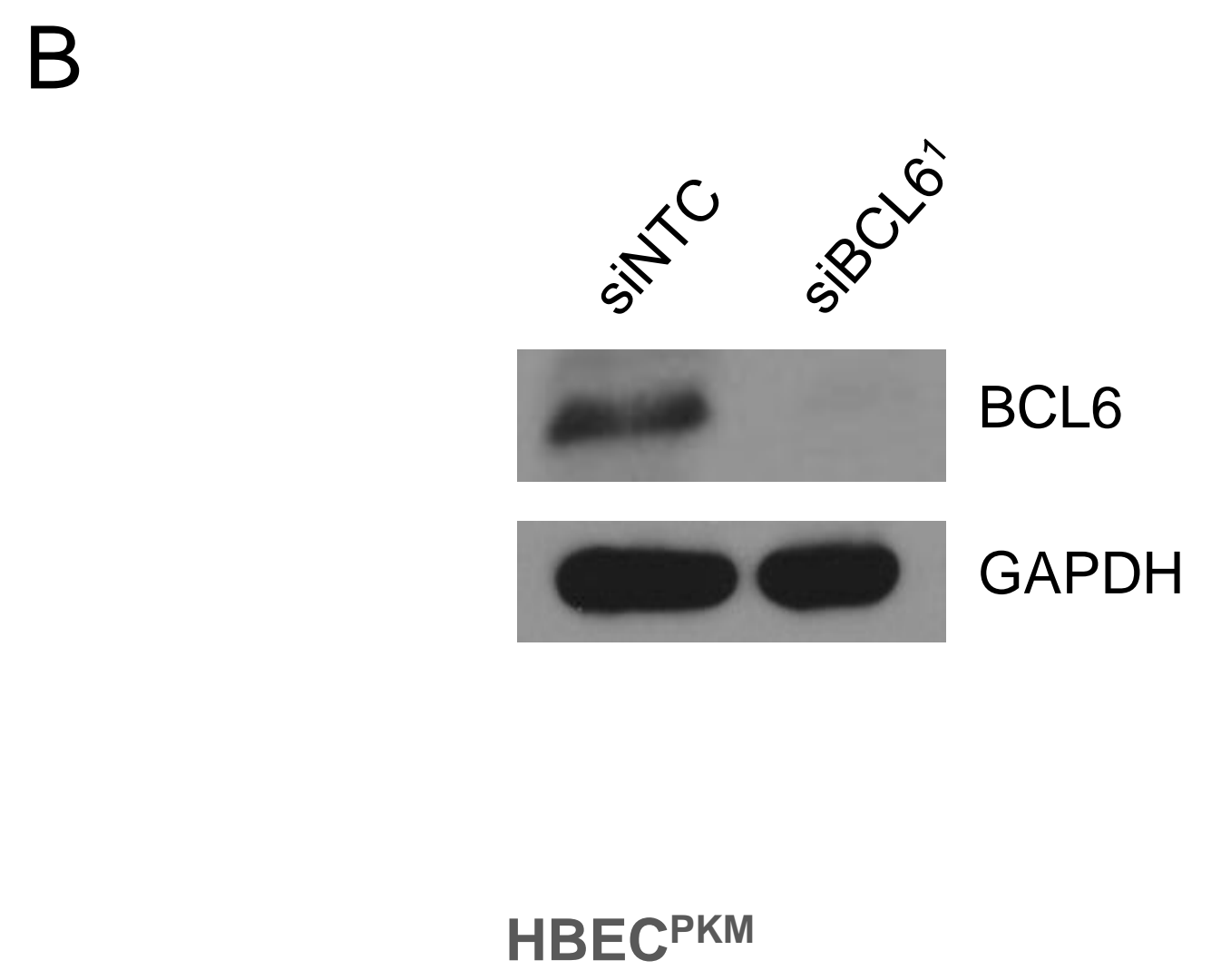
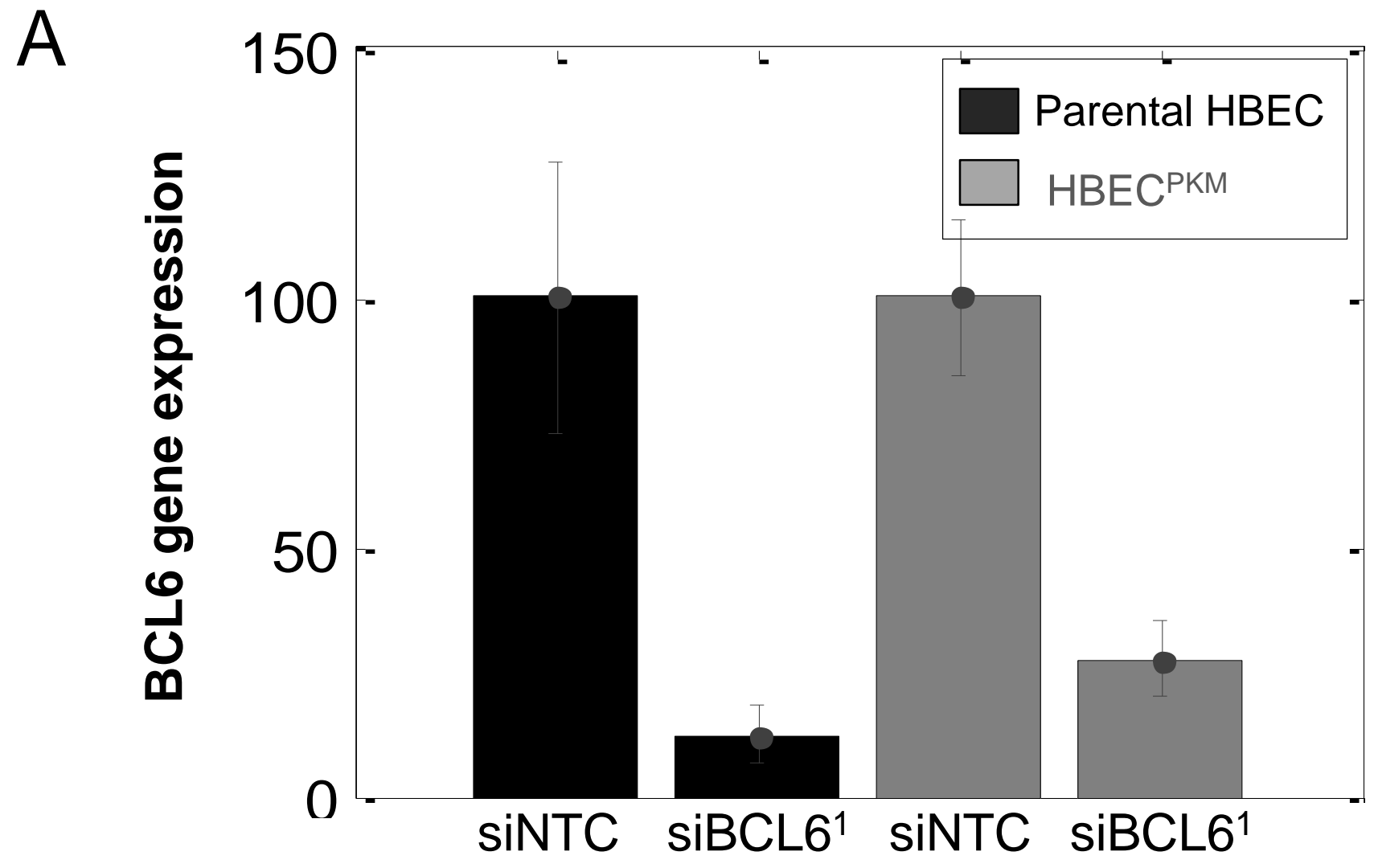
Supplementary Figure 8

A



B





Supplementary Table 1: signaling readouts of interest for immunofluorescence assay

Antibody	Vendor	Catalog #	Lot #	Dilution
β-catenin	Cell Signaling	4627S	5	1:300
p-Stat3	BD	612543	28597	1:400
Smad2/3	Cell Signaling	8685S	1	1:800
P65	Cell Signaling	4764S	3	1:400
Foxo1	Cell Signaling	2880B	5	1:300
p-Erk1/2	Cell Signaling	9101S	27	1:200
p-Smad2/3	Cell Signaling	8828S	4	1:400
Stat3	Cell Signaling	9132S	9	1:400

Supplementary Table 2: Primary antibodies for immunoblot

Antibody	Vendor	Catalog #	Lot #	Dilution
p-Stat3	BD	612543	28597	1:1000
p-Smad3	Cell Signaling	9520S	4	1:1000
Stat3	Cell Signaling	9132S	9	1:1000
GAPDH	GeneTex	GTX627408	--	1:2000

Supplementary Table 3: Treatment schedule for H1993 cell line derived subcutaneous xenografts

	Day 14	Day 15	Day 16	Day 17	Day 18	Day 19	Day 20
BBI608	20 mg/kg	-	-	20 mg/kg	Mice started	-	-
FX1	-	25 mg/kg	25 mg/kg	-	losing fur. Gave a	25 mg/kg	25 mg/kg
Combo	20 mg/kg	25 mg/kg	25 mg/kg	20 mg/kg	break to recover.	25 mg/kg	25 mg/kg

	Day 21	Day 22	Day 23	Day 24	Day 25	Day 26	Day 27
BBI608	20 mg/kg	Mice in	-	-	-	-	-
FX1	-	combo group lost 10% body weight	Did not recover	Did not recover	Majority recovered	25 mg/kg	25 mg/kg
Combo	20 mg/kg	-	-	-	-	25 mg/kg	25 mg/kg

	Day 28	Day 29	Day 30	Day 31	Day 32	Day 33	Day 34
BBI608	20 mg/kg	-	-	-	-	-	-
FX1	-	Followed the same drug holiday from the last week				25 mg/kg	25 mg/kg
Combo	20 mg/kg	-	-	-	-	25 mg/kg	25 mg/kg

	Day 33	Day 34	Day 35	Day 36	Day 37	Day 38	Day 39
BBI608	20 mg/kg	-	-	-	-	Mice were sacrificed,	
FX1	-	Followed the same drug holiday from the last week				tumors were weighed	
Combo	20 mg/kg	-	-	-	-	and measured	

Note: The dose of BBI608 (STAT3 inhibitor) and FX1 (BCL6 inhibitor) are shown in purple and red respectively.