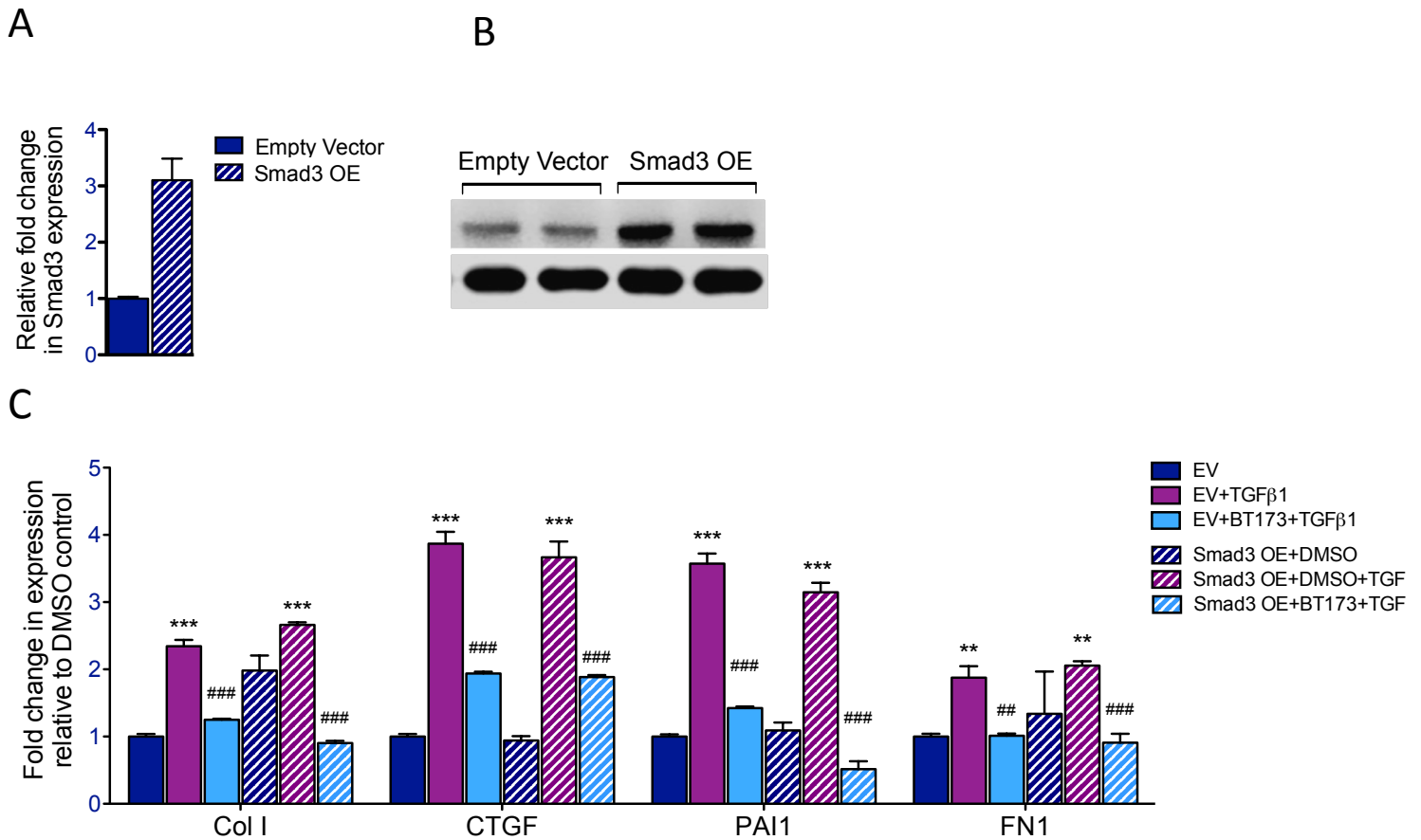


## Supplementary Figure 1



**Supp. Fig. 1: Smad3 overexpression did not influence BT173's inhibitory effects on Smad3 target gene expression.** hRTECs were transfected with either control empty vector (EV) or vector expressing Smad3 (Smad3 OE). qPCR analysis (A) and western blot analysis (B) of Smad3 overexpression in hRTECs. C) Transfected cells were pretreated with either vehicle or BT173 before TGF-β1 stimulation. \*\*\* $p < 0.001$  and \*\* $p < 0.01$  when compared with vehicle treated EV, ### $p < 0.001$  and ## $p < 0.01$  when compared with EV+TGFβ1.