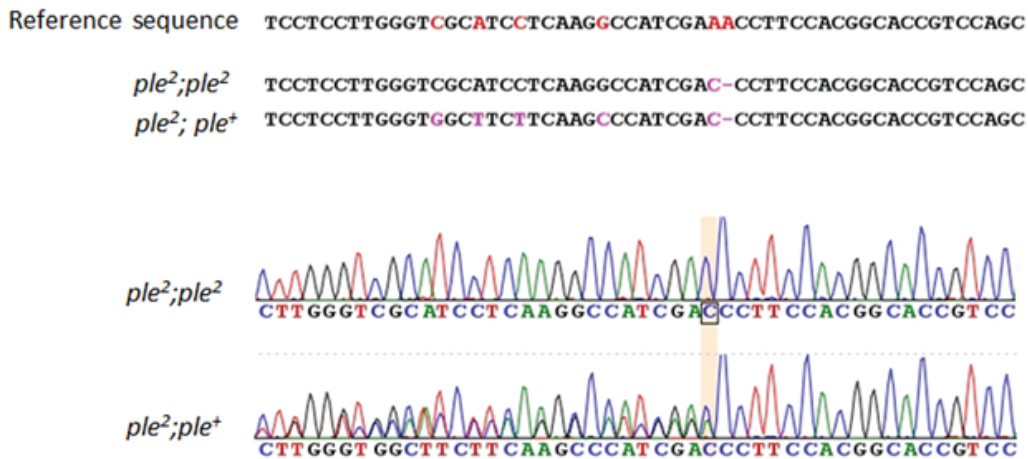


**Fig S2. Identification of the *ple*<sup>2</sup> Δ2271A mutation in DTH exon 5**



**Table S1. Enumeration of TH IR and DA IR cell bodies.**

The data in this table indicates that number of PAL neurons showing DA IR is similar to those labeled with TH IR. PPL1/2, PPM1/3 and PPM3 DA IR cell counts are somewhat reduced relative to TH IR, and PAM cell bodies are not clearly distinguished with DA IR. L, left brain hemisphere; R, right brain hemisphere; b, individual brains.

TH IR	PAM L	PAM R	PAL L	PAL R	PPL1/2 L	PPL1/2 R	PPM1/2 L	PPM1/2 R	PPM3 L	PPM3 R
W1118 b1	~100	~100	4	5	15	16	11	7	10	6
WT Rescue b1	~100	~100	5	5	16	16	11	12	8	8
WT Rescue b2	~100	~100	5	5	15	15	7	10	10	9
WT Rescue b3	Poorly visible		5	5	15	10	10	11	10	11
WT Rescue b4	~100	~100	5	5	12	12	10	8	Obscured by trachea	
DA IR										
W1118 b1	Poorly visible		5	5	10	10	7	9	6	6
W1118 b2	Poorly visible		5	5	8	7	10	6	5	6
W1118 b3	Poorly visible		4	2	11	11	7	7	6	3
Wt Rescue b1	Poorly visible		5	5	9	10	7	7	5	3
Wt Rescue b2	Poorly visible		5	5	10	10	7	7	5	3