

Supplementary Data

Exploring the influence of indololactone structure on selectivity for binding to the C1 domains of PKC α , PKC ϵ , and RasGRP

Eleonora Elhalem^a, Lucía Gandolfi Donadío^a, Xiaoling Zhou^b, Nancy E. Lewin^b, Lia C. García^a, Christopher C. Lai^c, James A. Kelley^c, Megan L. Peach^d, Peter M. Blumberg^b and Maria J. Comin^{a*}

^a*Laboratory of Organic Synthesis, Center of Research and Development in Chemistry, National Institute of Industrial Technology, Buenos Aires, Argentina;*

^b*Laboratory of Cancer Biology and Genetics, Center for Cancer Research, National Cancer Institute, Bethesda, MD 20892, USA;*

^c*Chemical Biology Laboratory, Center for Cancer Research, National Cancer Institute at Frederick, National Institutes of Health, Frederick, MD 21702, U.S.A.*

^d*Basic Science Program, Leidos Biomedical Research Inc., Chemical Biology Laboratory, Frederick National Laboratory for Cancer Research, National Institutes of Health, Frederick, MD 21702, U.S.A.*

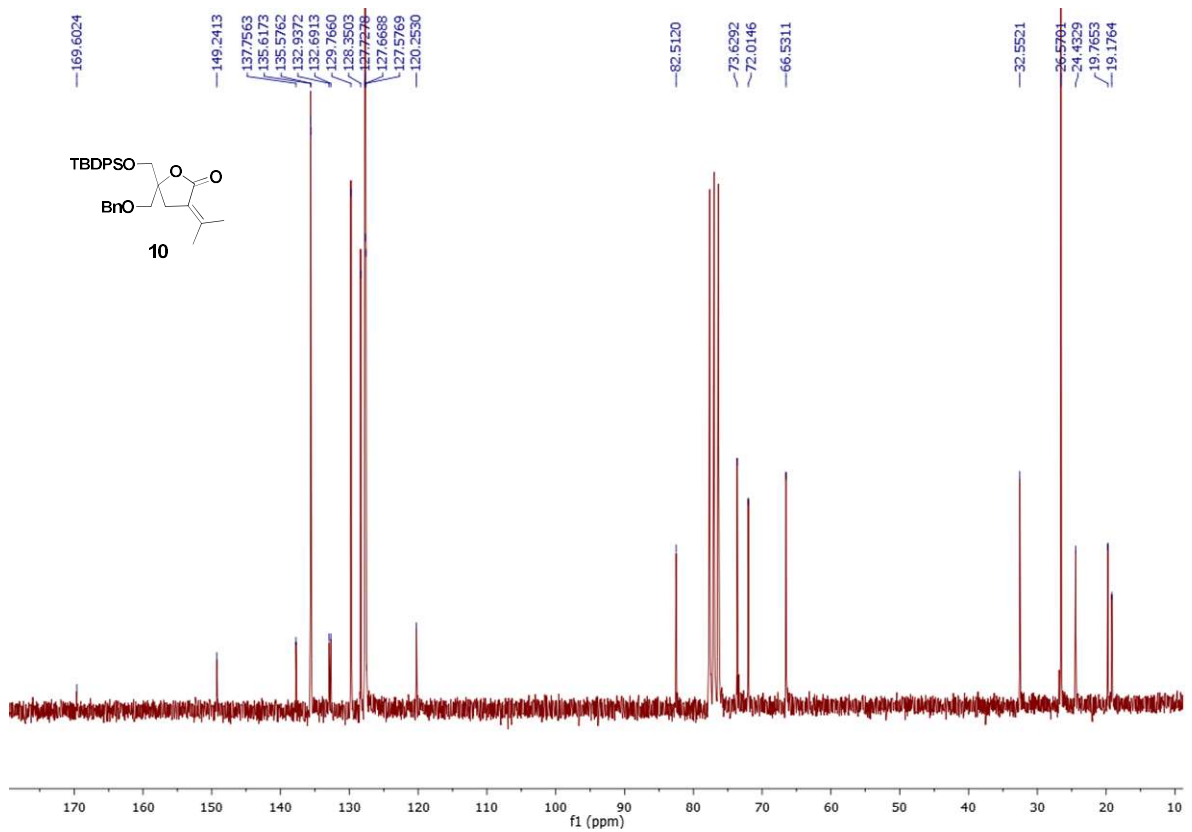
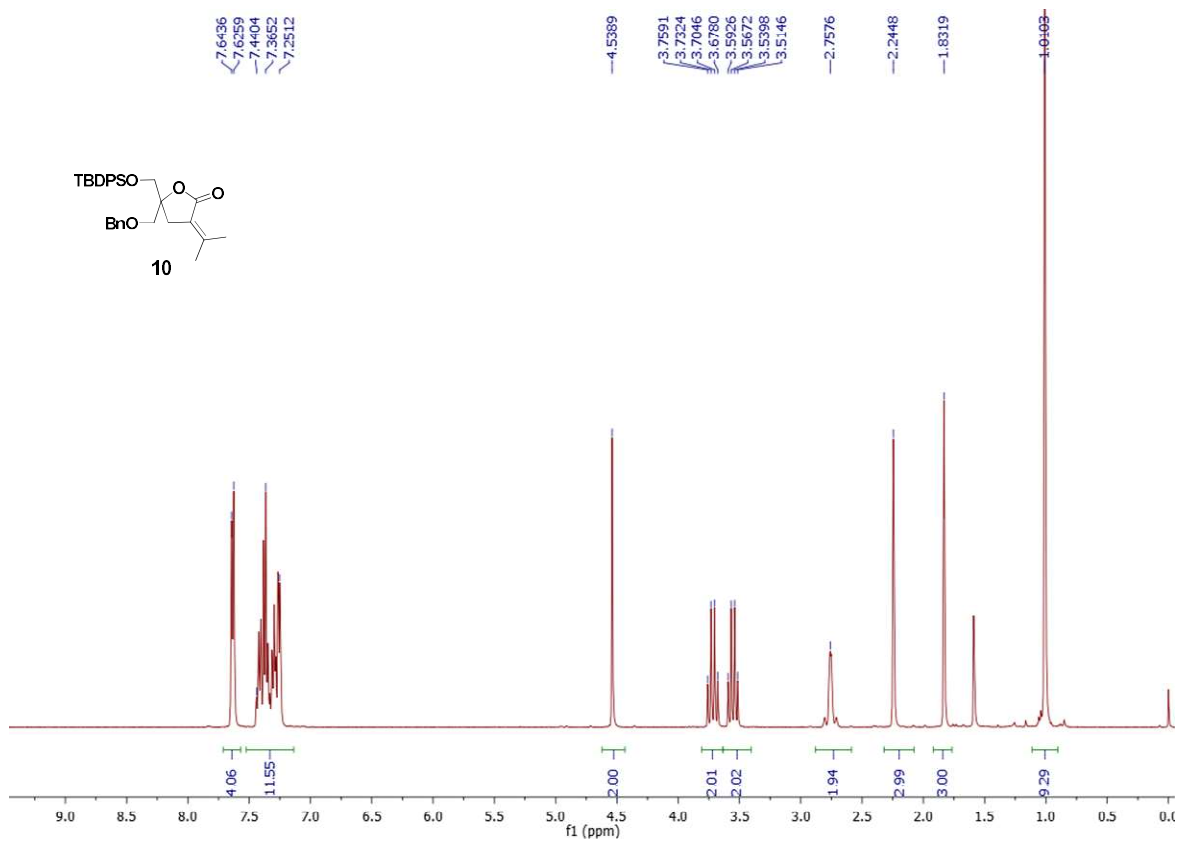
* Corresponding author. Tel.: +54-11-4724-6289; fax: +54-11-4724-6289; email:

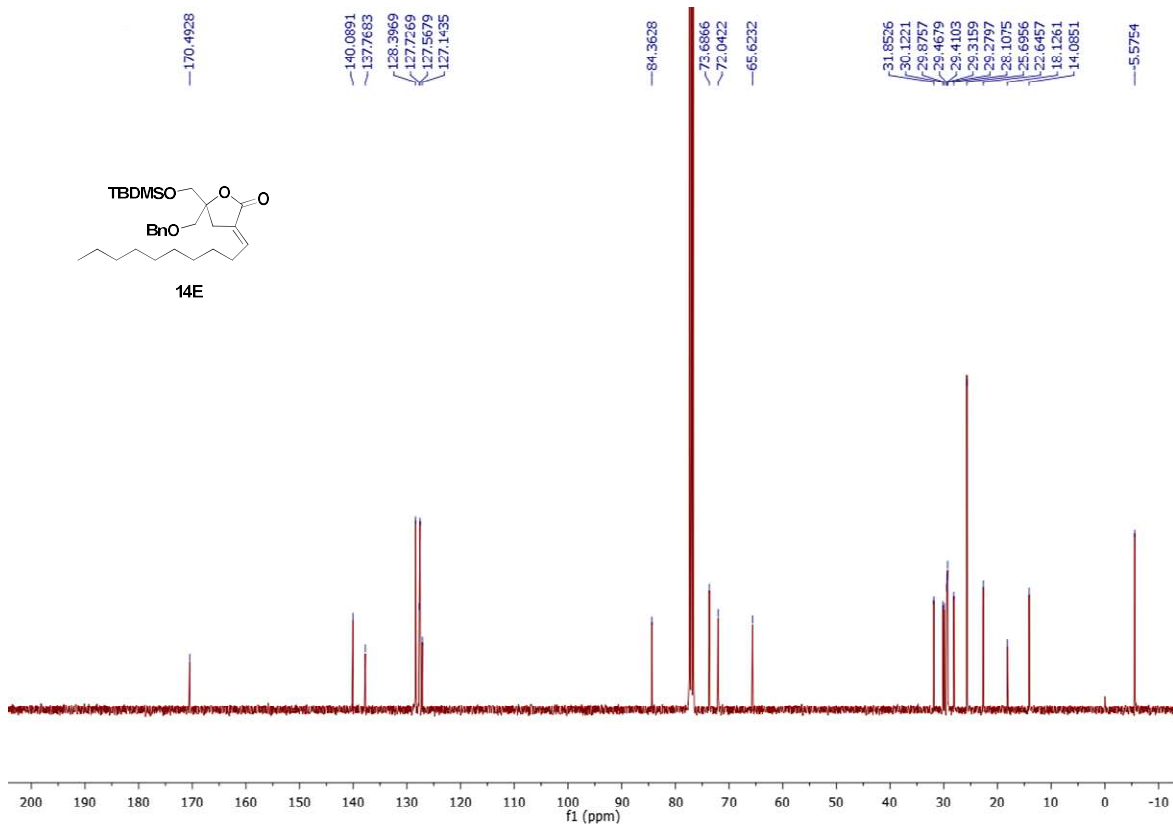
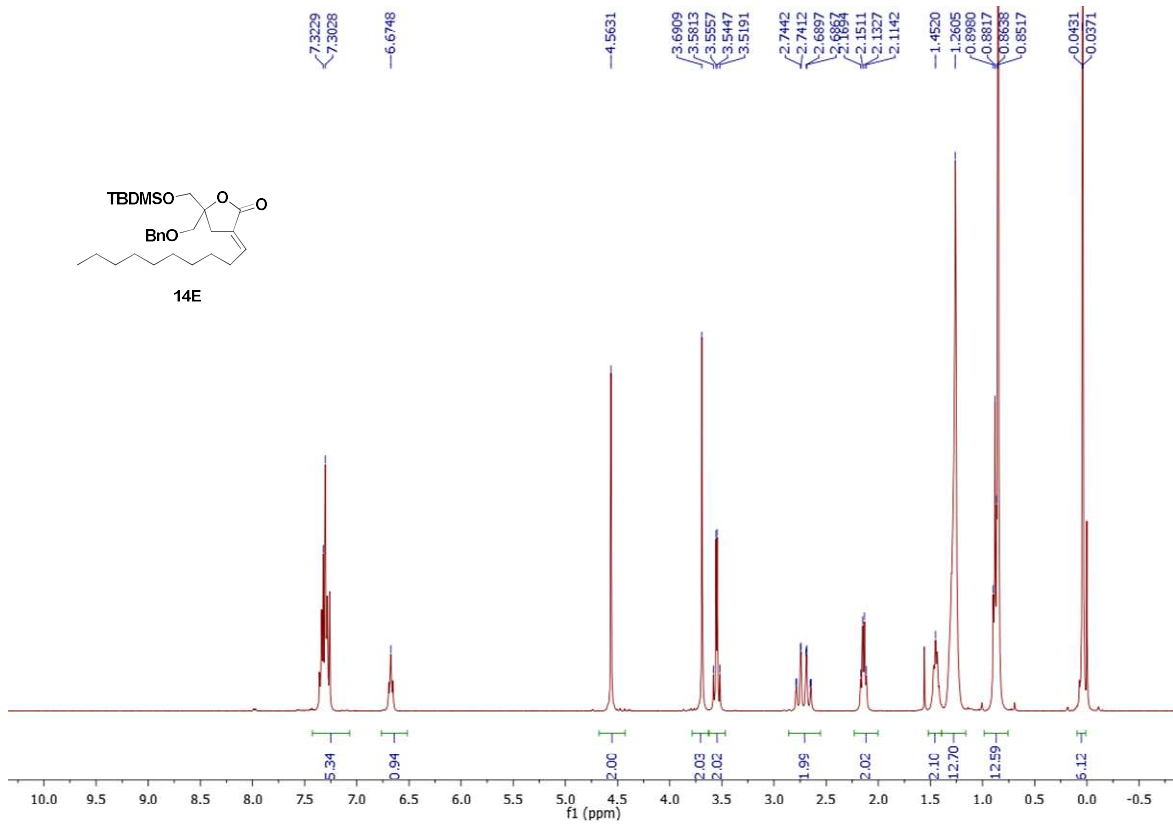
jcomin@inti.gob.ar.

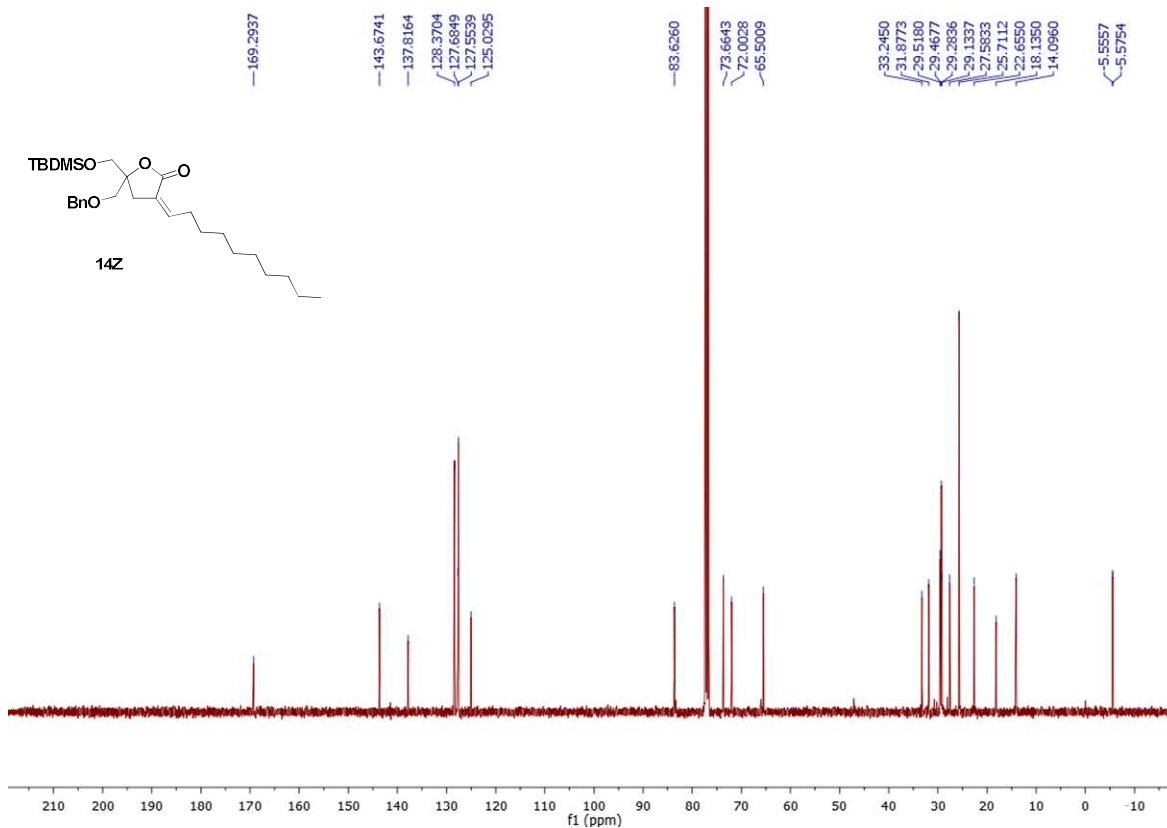
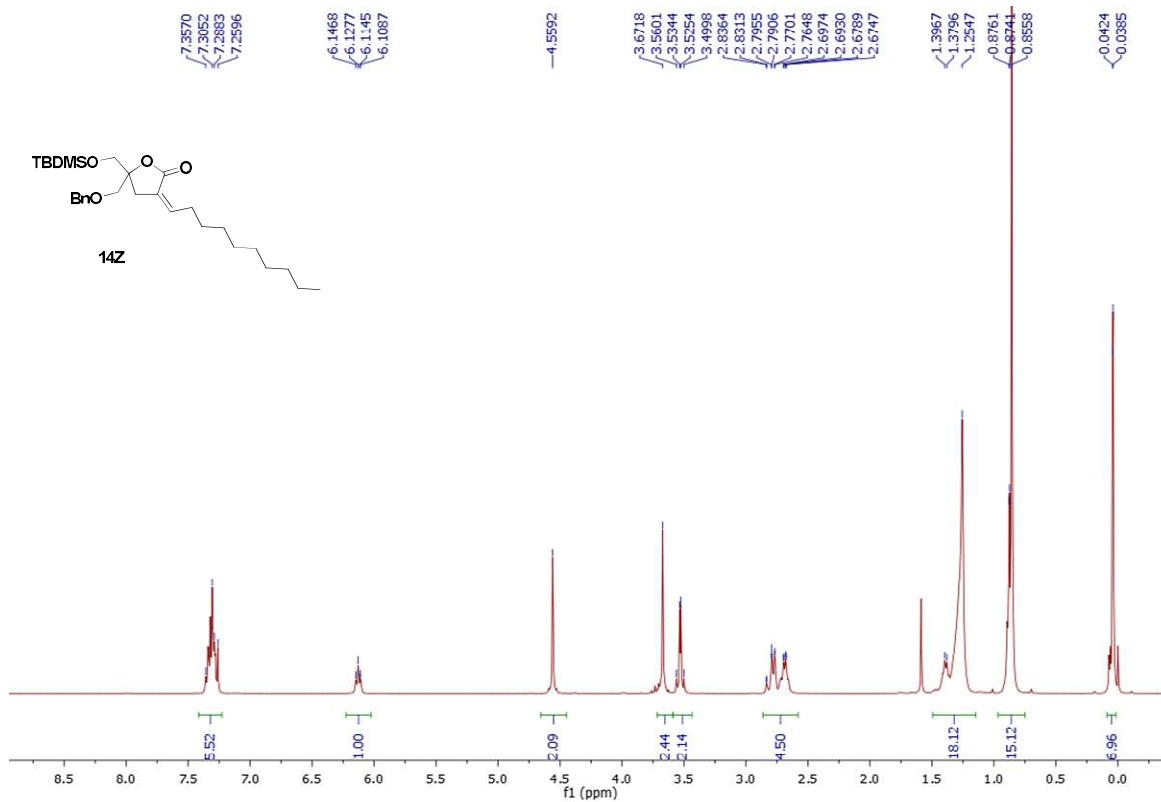
Table of Contents

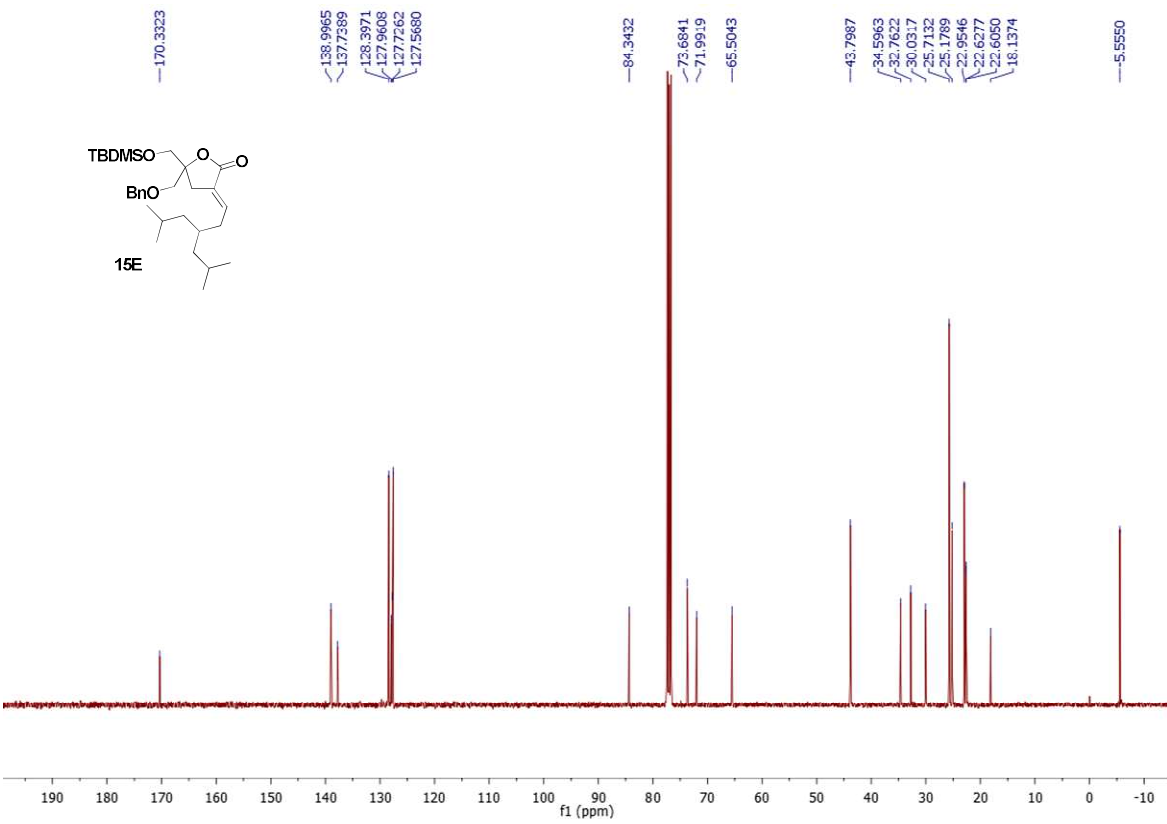
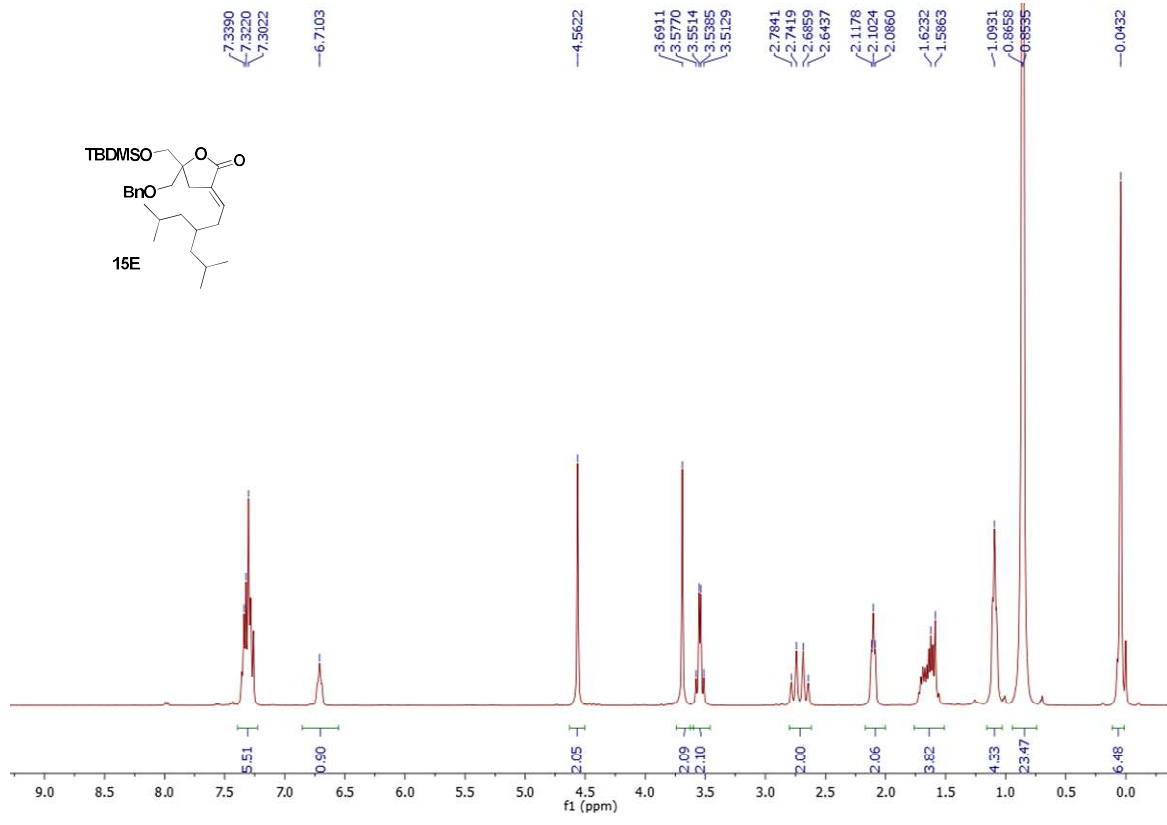
¹ H-NMR 10 Spectra.....	S4
¹³ C-NMR 10 Spectra.....	S4
¹ H-NMR 14 <i>E</i> Spectra	S5
¹³ C-NMR 14 <i>E</i> Spectra	S5
¹ H-NMR 14 <i>Z</i> Spectra	S6
¹³ C-NMR 14 <i>Z</i> Spectra	S6
¹ H-NMR 15 <i>E</i> Spectra	S7
¹³ C-NMR 15 <i>E</i> Spectra	S7
¹ H-NMR 15 <i>Z</i> Spectra	S8
¹³ C-NMR 15 <i>Z</i> Spectra	S8
¹ H-NMR 16 Spectra.....	S9
¹³ C-NMR 16 Spectra.....	S9
¹ H-NMR 26 Spectra.....	S10
¹³ C-NMR 26 Spectra.....	S10
¹ H-NMR 27 Spectra.....	S11
¹³ C-NMR 27 Spectra.....	S11
¹ H-NMR 29 Spectra.....	S12
¹ H-NMR 18 Spectra.....	S12
¹³ C-NMR 18 Spectra.....	S13
¹ H-NMR 19 Spectra.....	S13
¹³ C-NMR 19 Spectra.....	S14
¹ H-NMR 20 Spectra.....	S14
¹³ C-NMR 20 Spectra.....	S15
¹ H-NMR 28 Spectra.....	S15
¹³ C-NMR 28 Spectra.....	S16
¹ H-NMR 11 Spectra.....	S16
¹³ C-NMR 11 Spectra.....	S17
¹ H-NMR 12 Spectra.....	S17
¹³ C-NMR 12 Spectra.....	S18
¹ H-NMR 21 Spectra.....	S18
¹³ C-NMR 21 Spectra.....	S19

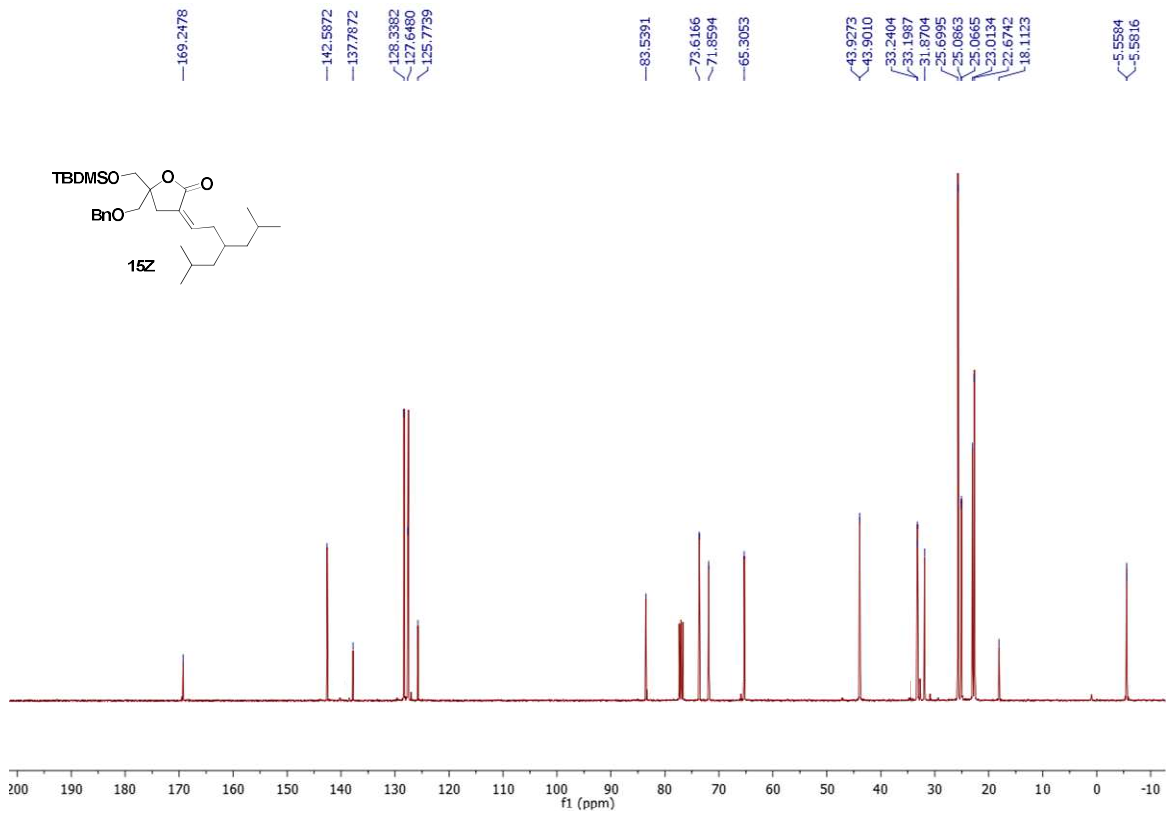
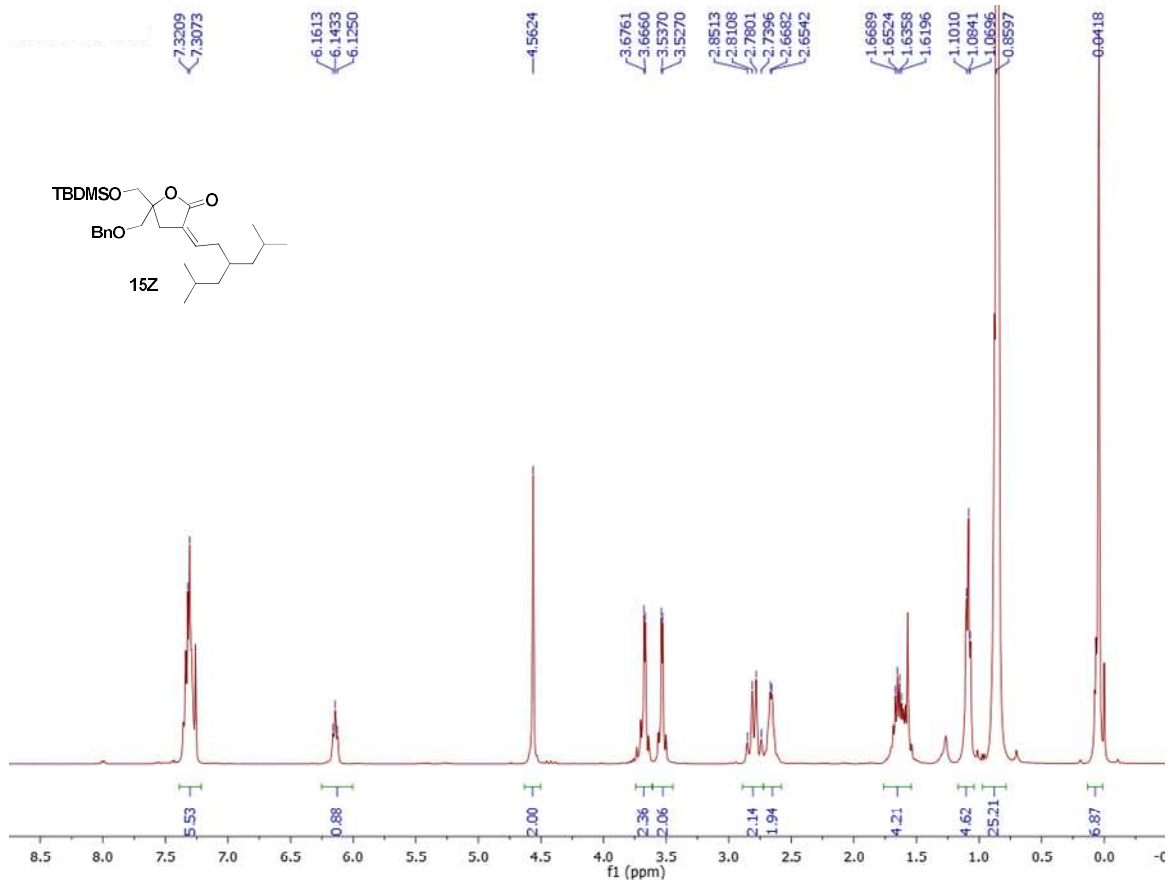
¹H-NMR 22 Spectra.....	S19
¹³C-NMR 22 Spectra.....	S20
¹H-NMR 23 Spectra.....	S20
¹³C-NMR 23 Spectra.....	S21
¹H-NMR 30 Spectra.....	S21
¹³C-NMR 30 Spectra.....	S22
¹H-NMR 31 Spectra.....	S22
¹³C-NMR 31 Spectra.....	S23
¹H-NMR 2 Spectra.....	S23
¹³C-NMR 2 Spectra.....	S24
¹H-NMR 3 Spectra.....	S24
¹³C-NMR 3 Spectra.....	S25
¹H-NMR 4 Spectra.....	S25
¹³C-NMR 4 Spectra.....	S26
¹H-NMR 5 Spectra.....	S26
¹³C-NMR 5 Spectra.....	S27
¹H-NMR 6 Spectra.....	S27
¹³C-NMR 6 Spectra.....	S28
¹H-NMR 7 Spectra.....	S28
¹³C-NMR 7 Spectra.....	S29
¹H-NMR 8 Spectra.....	S29
¹³C-NMR 8 Spectra.....	S30
HPLC Analysis of 20	S30
<i>E</i> and <i>Z</i> isomers of 20: HPLC-MS and UV spectra.....	S31
<i>E</i> and <i>Z</i> isomers of 20: MS spectra	S32

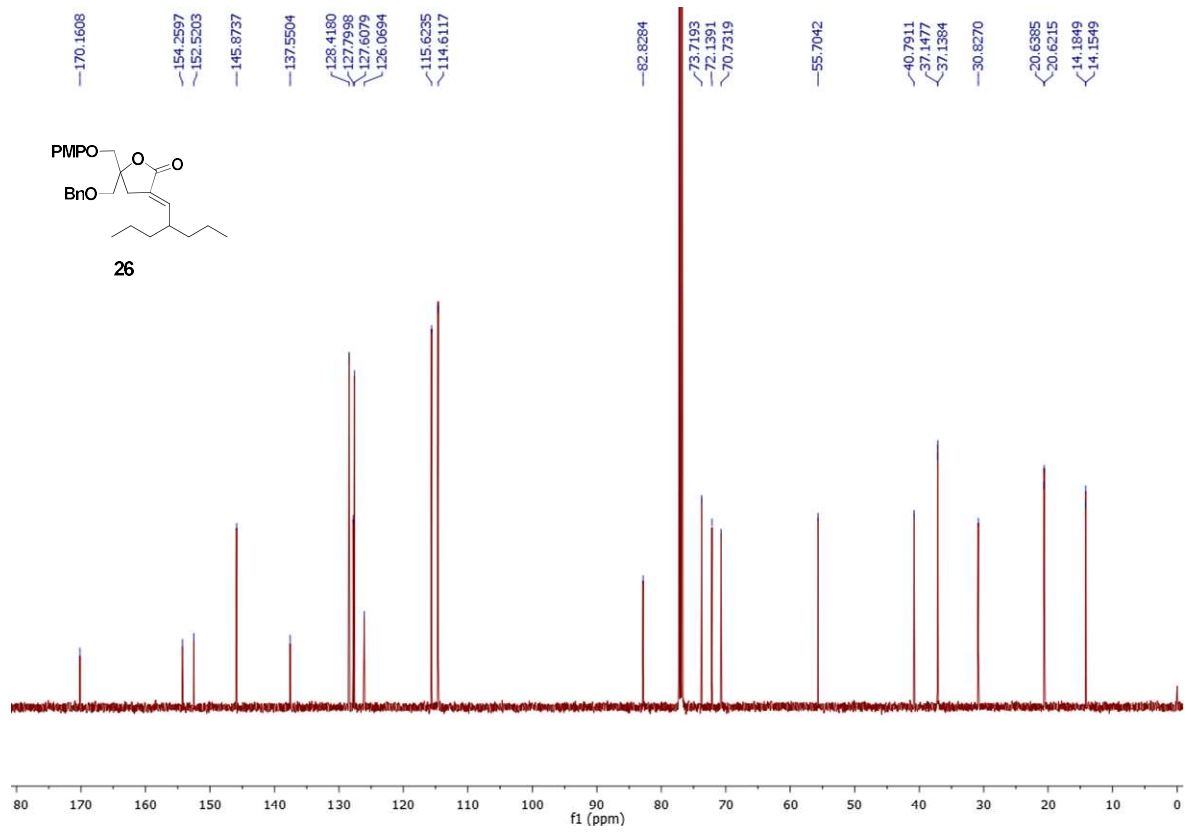
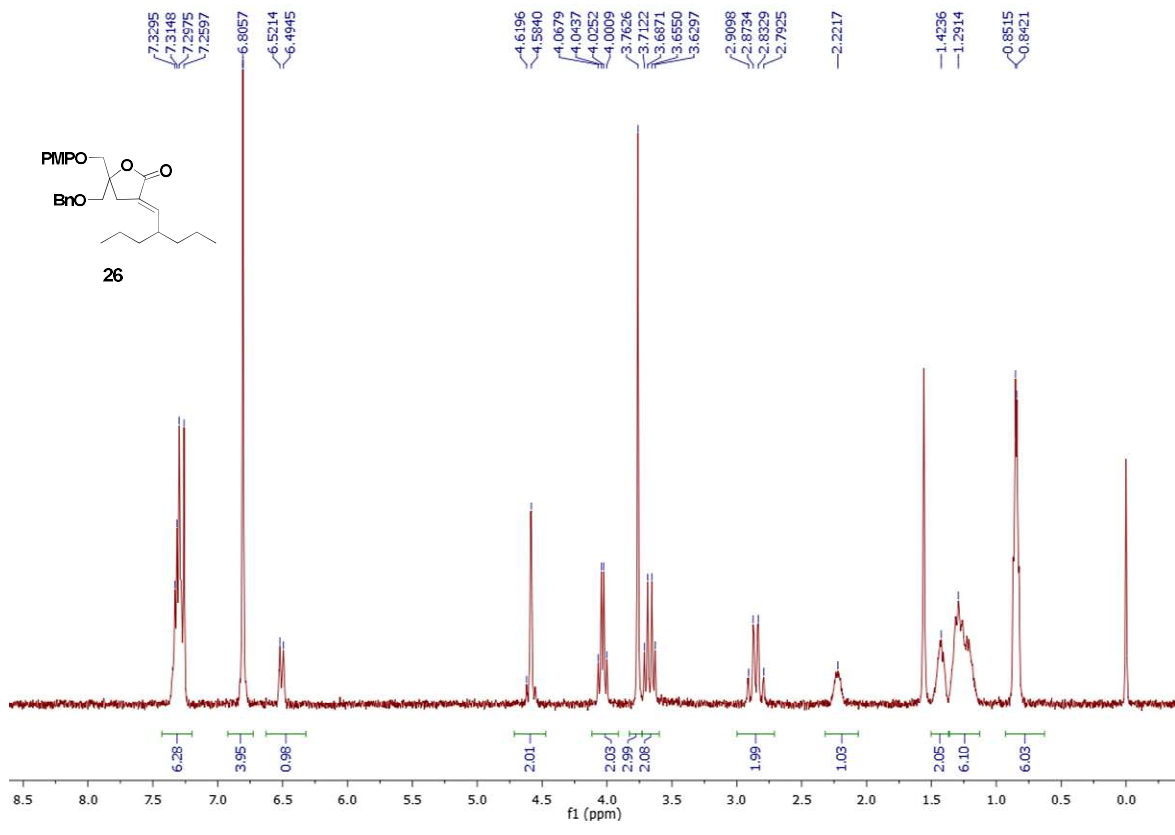


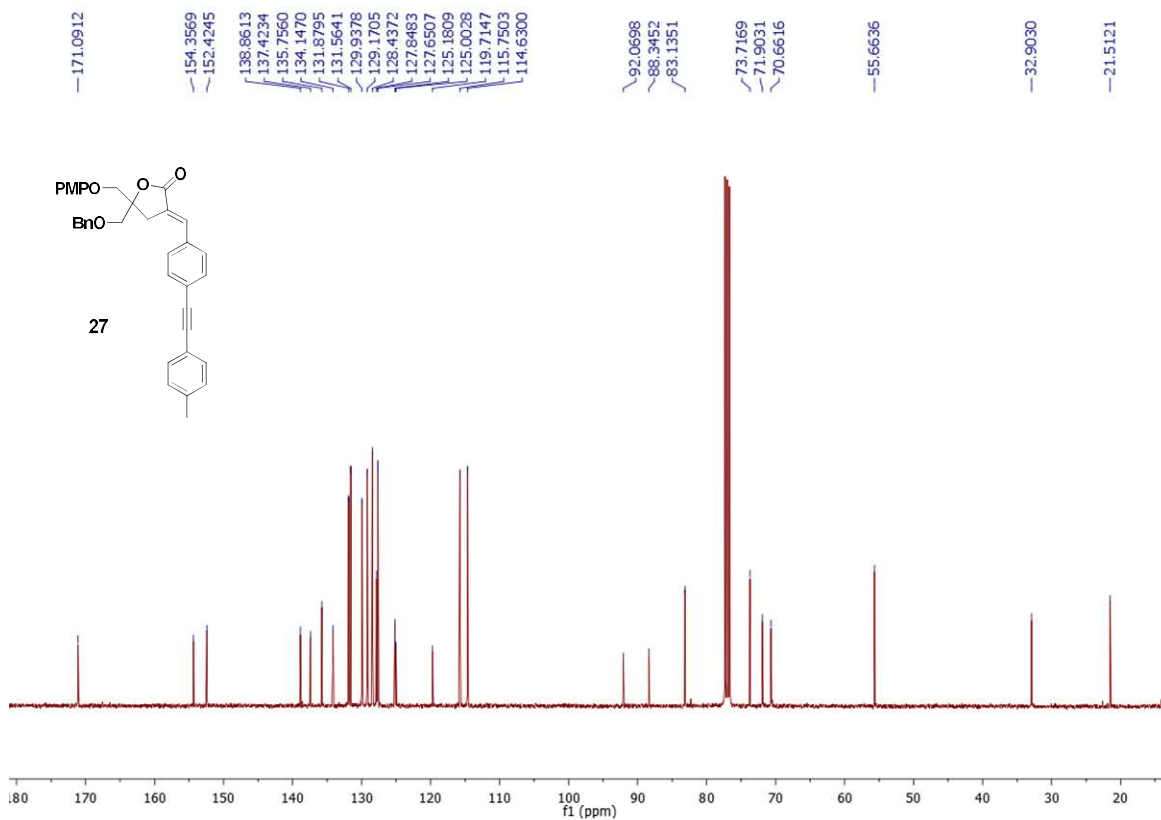
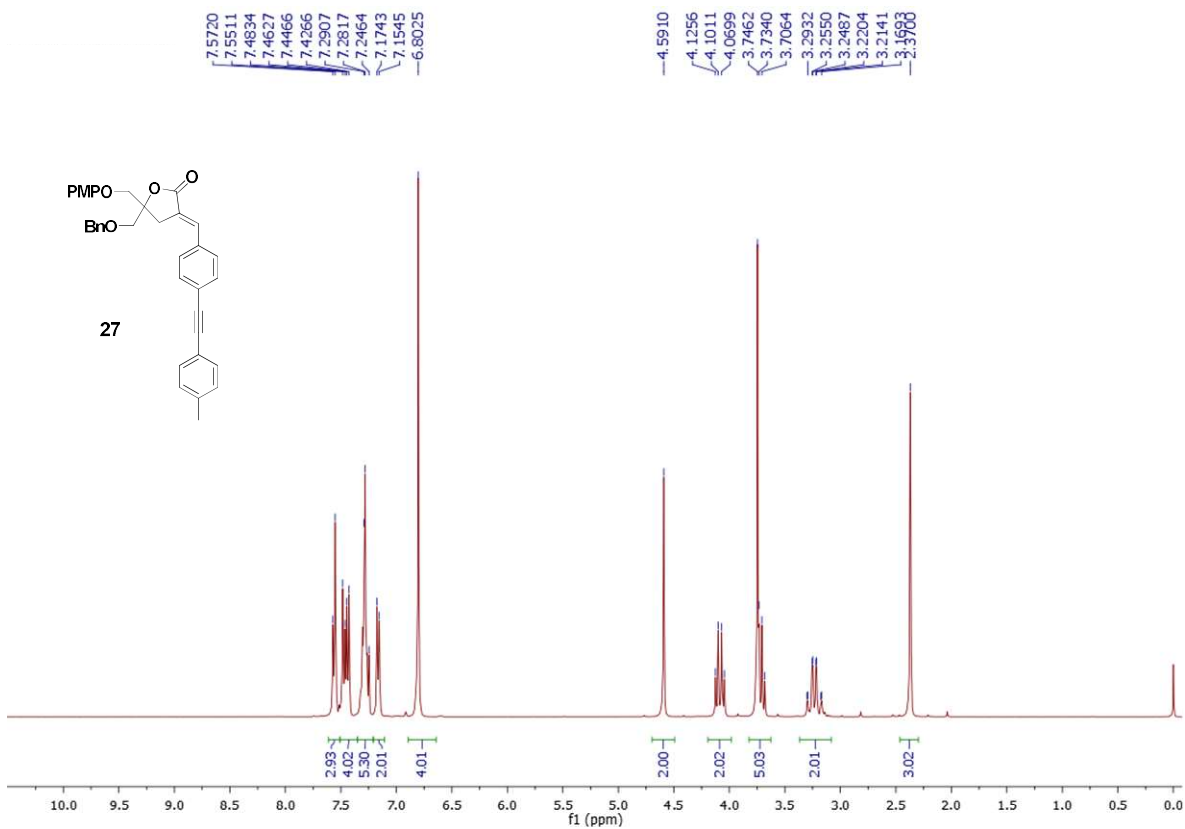


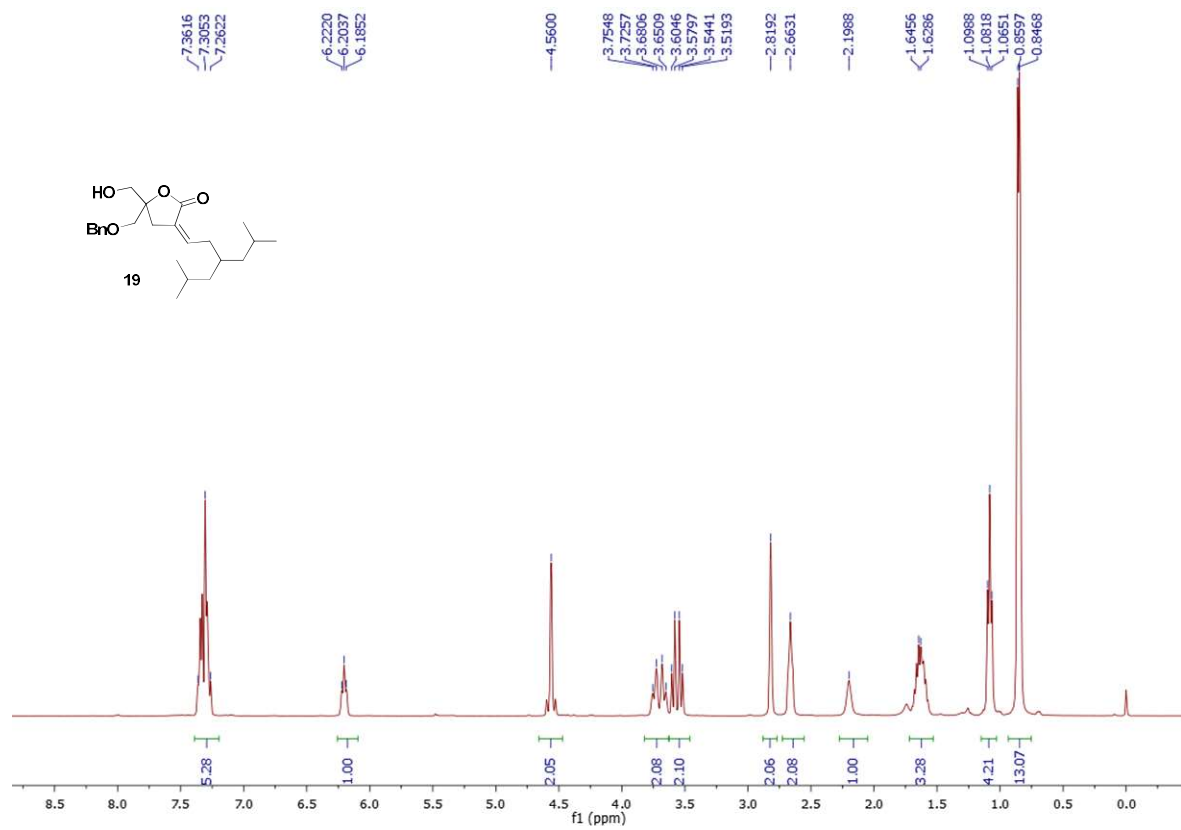
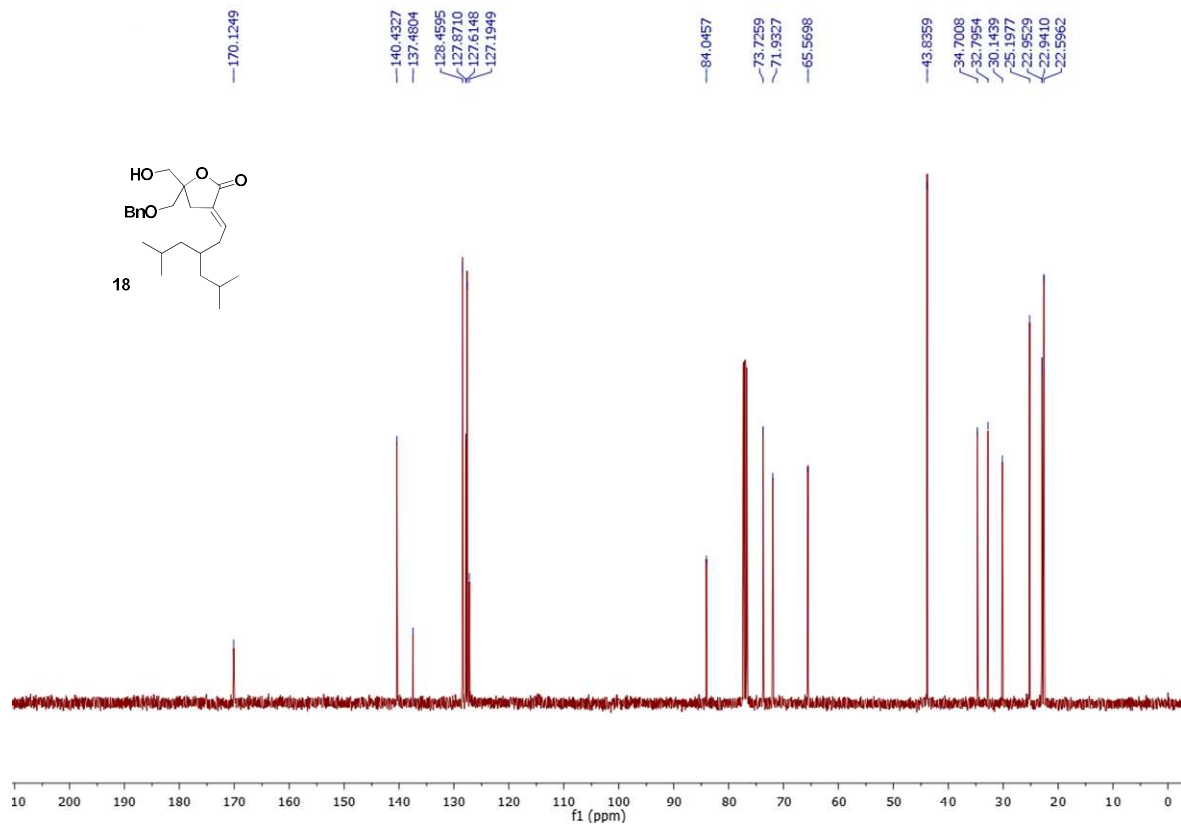


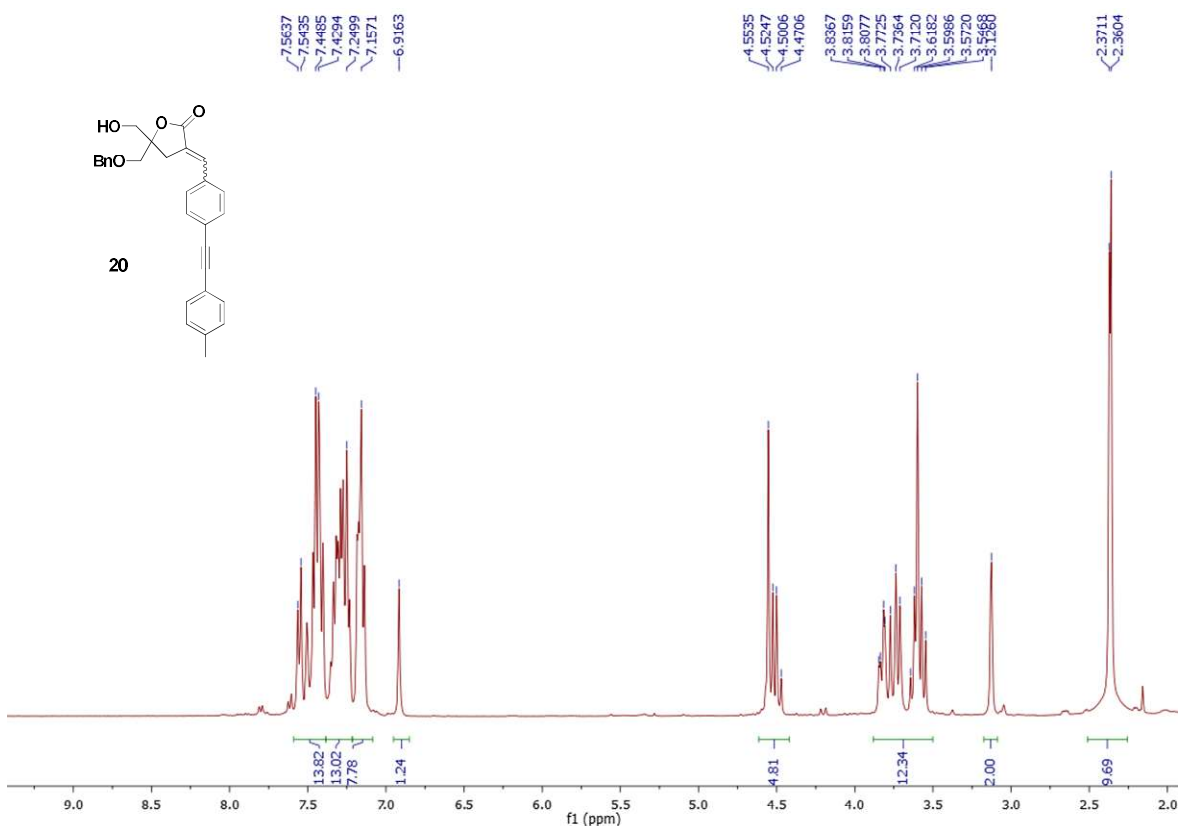
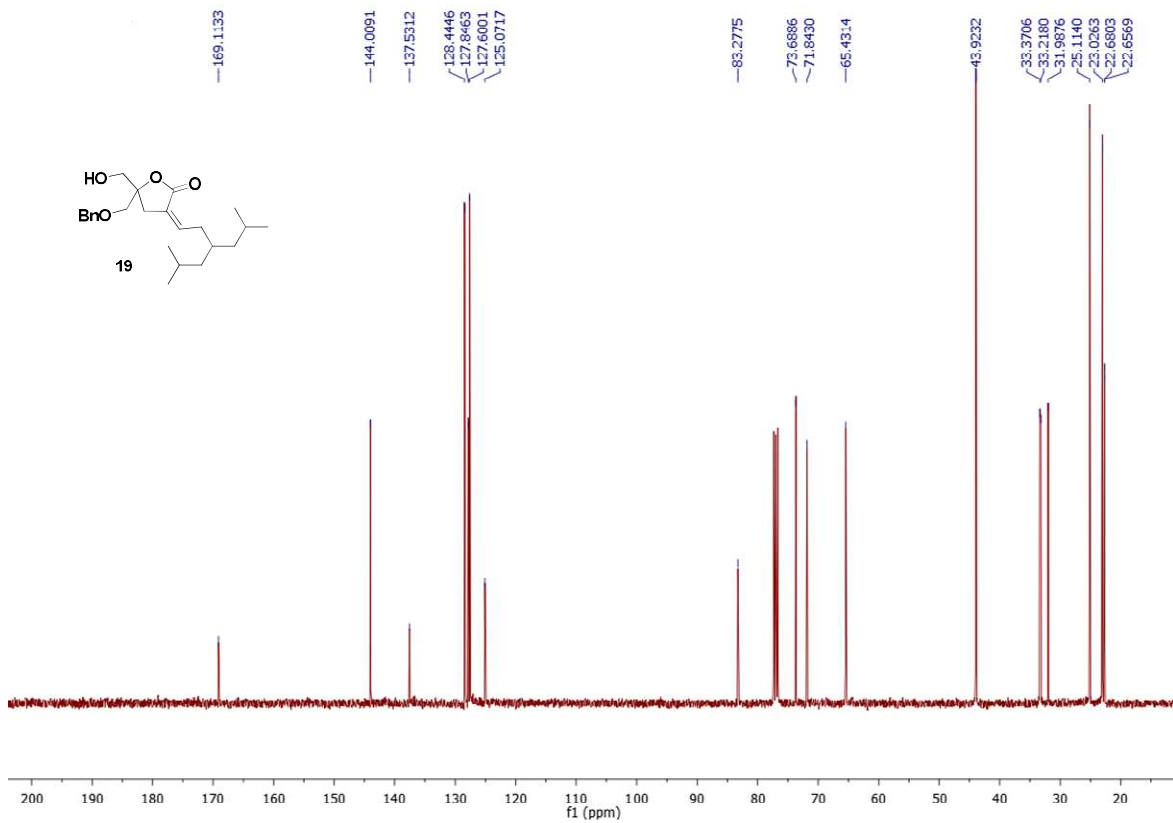


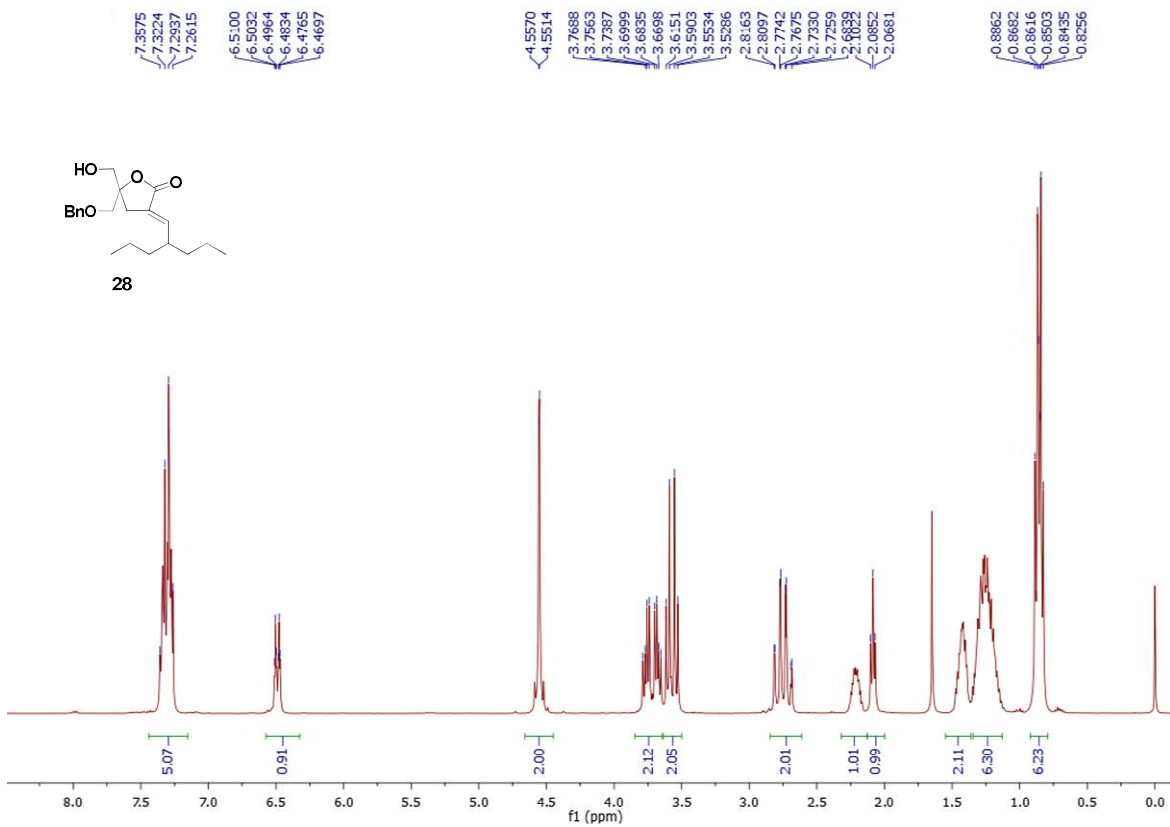
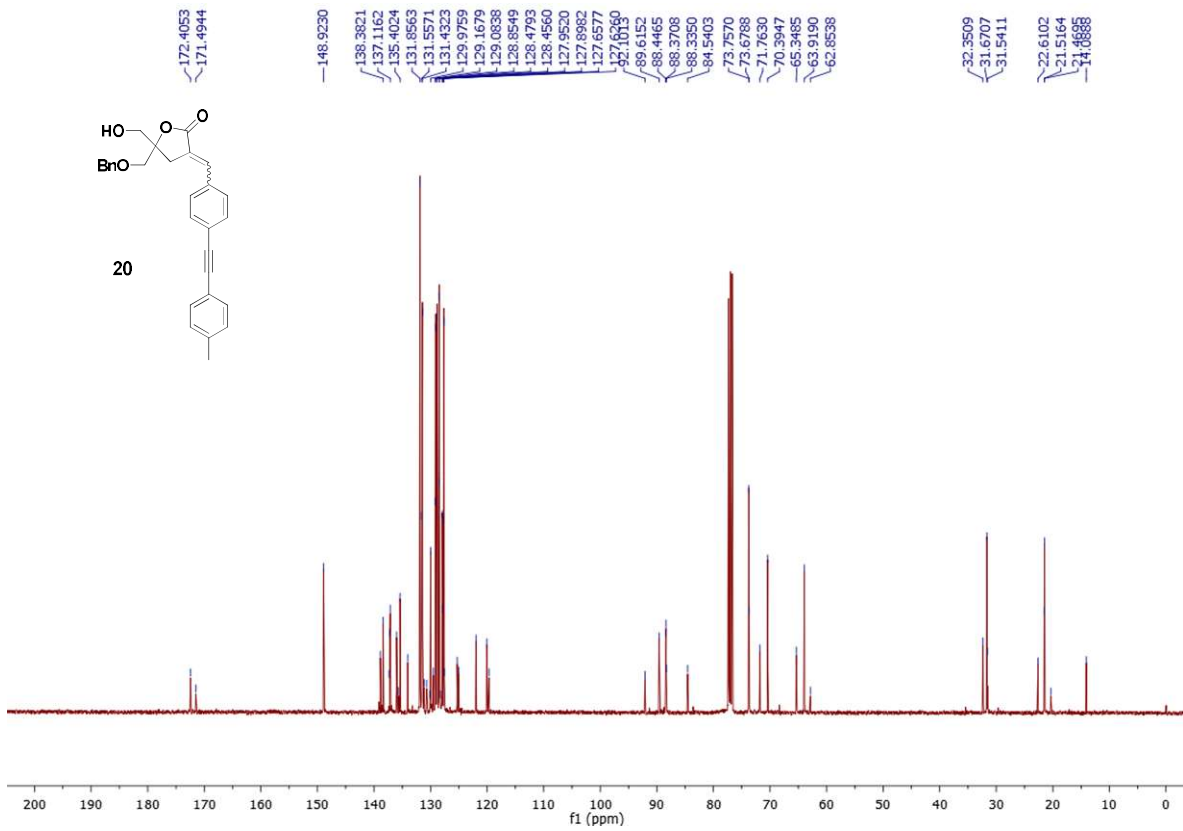


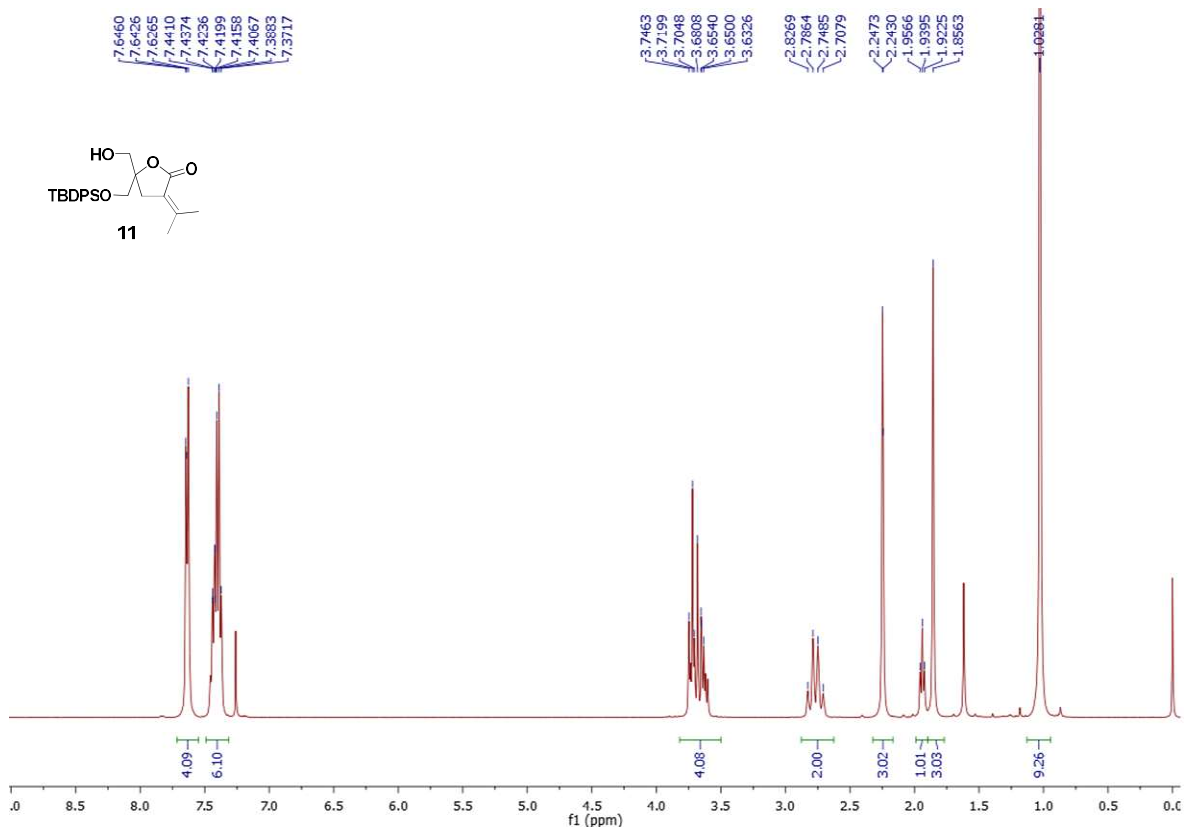
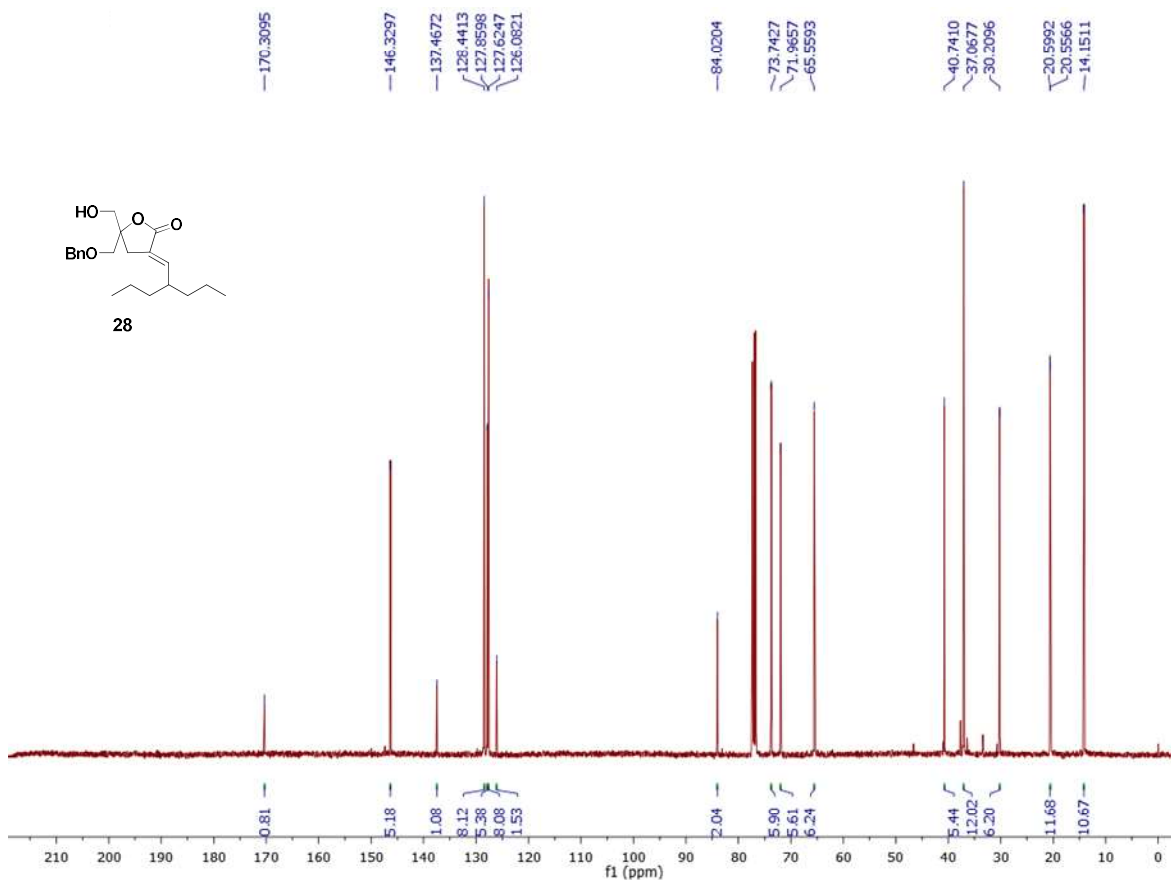


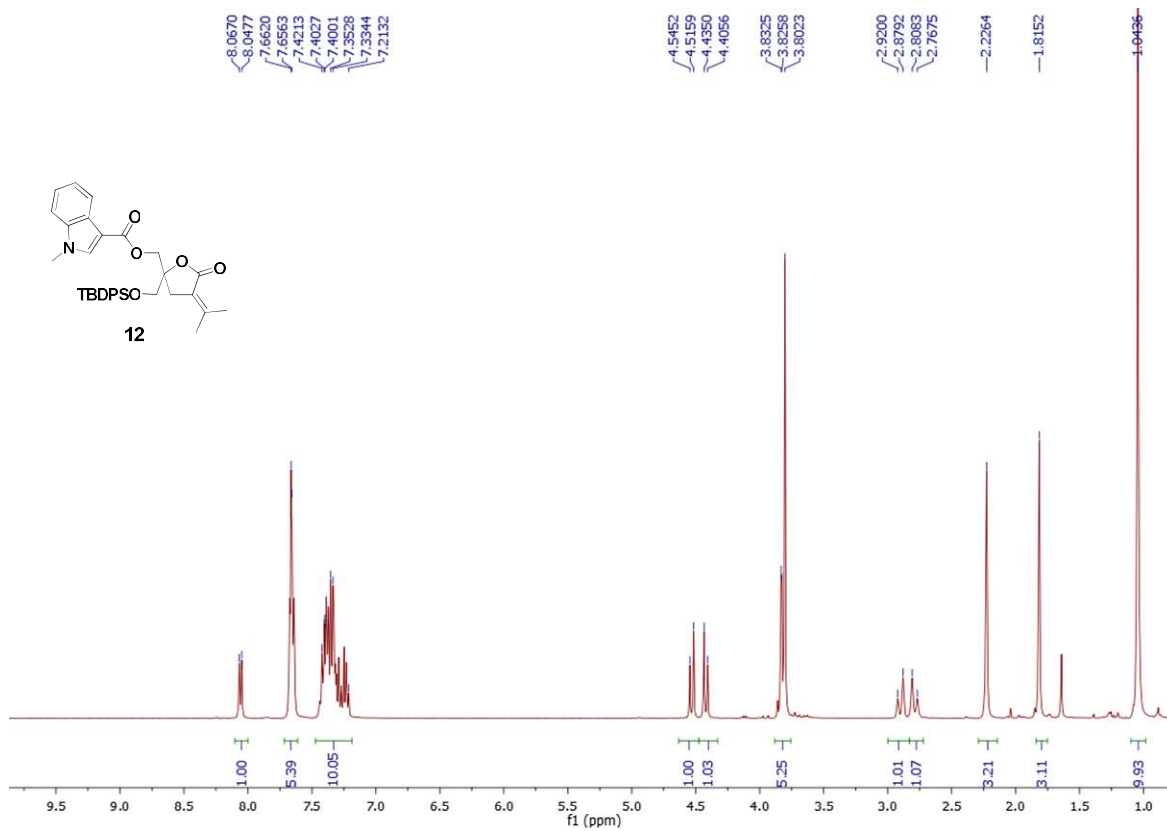
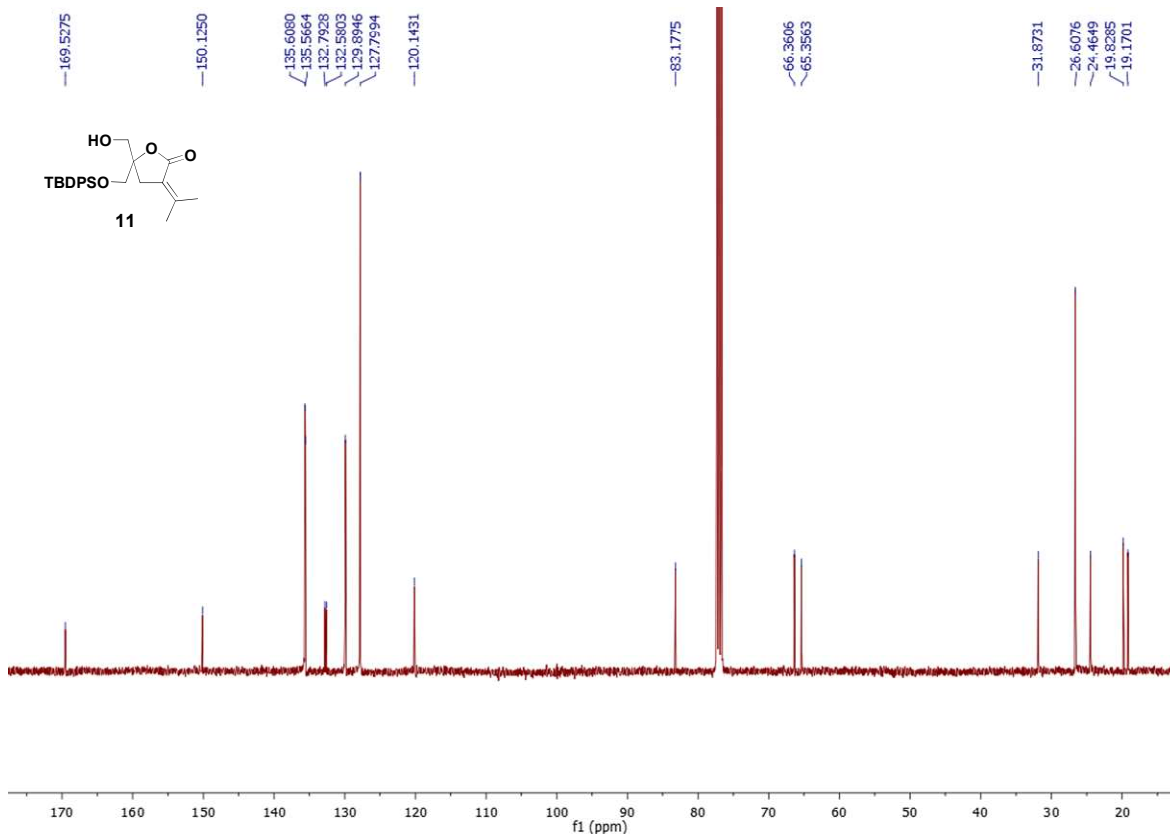


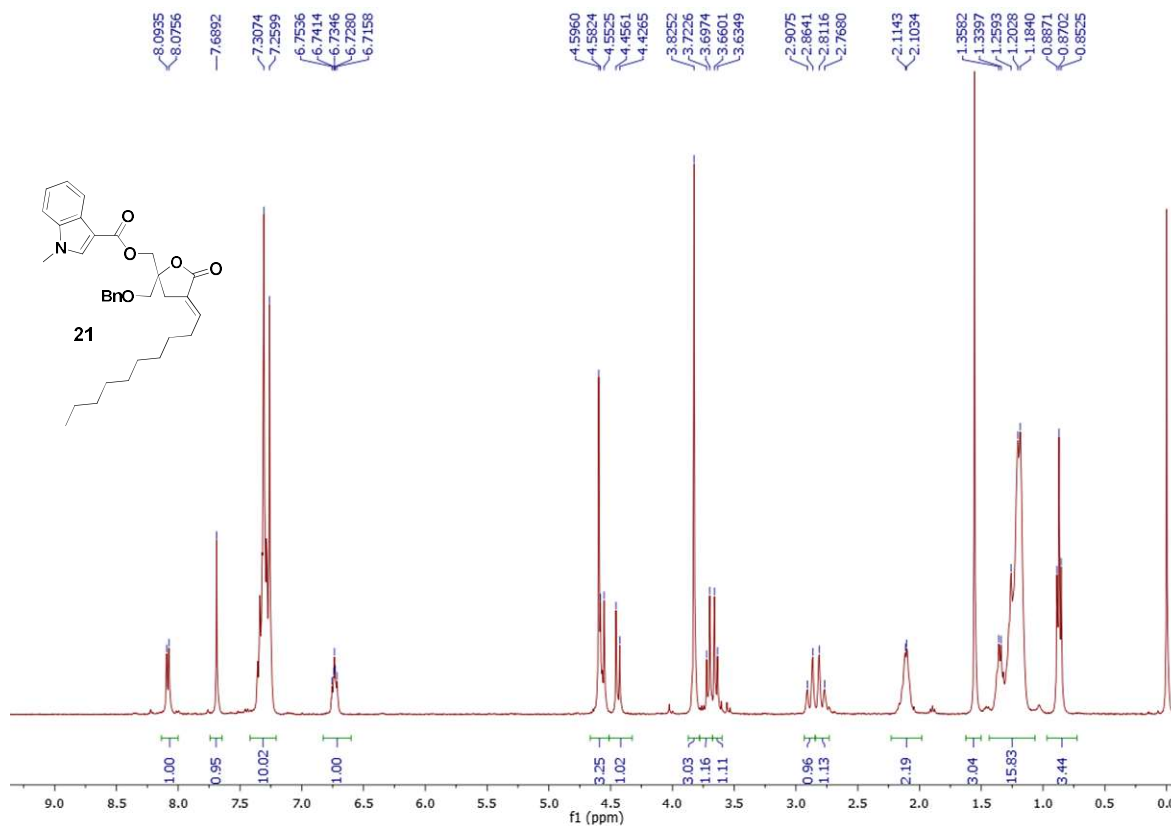
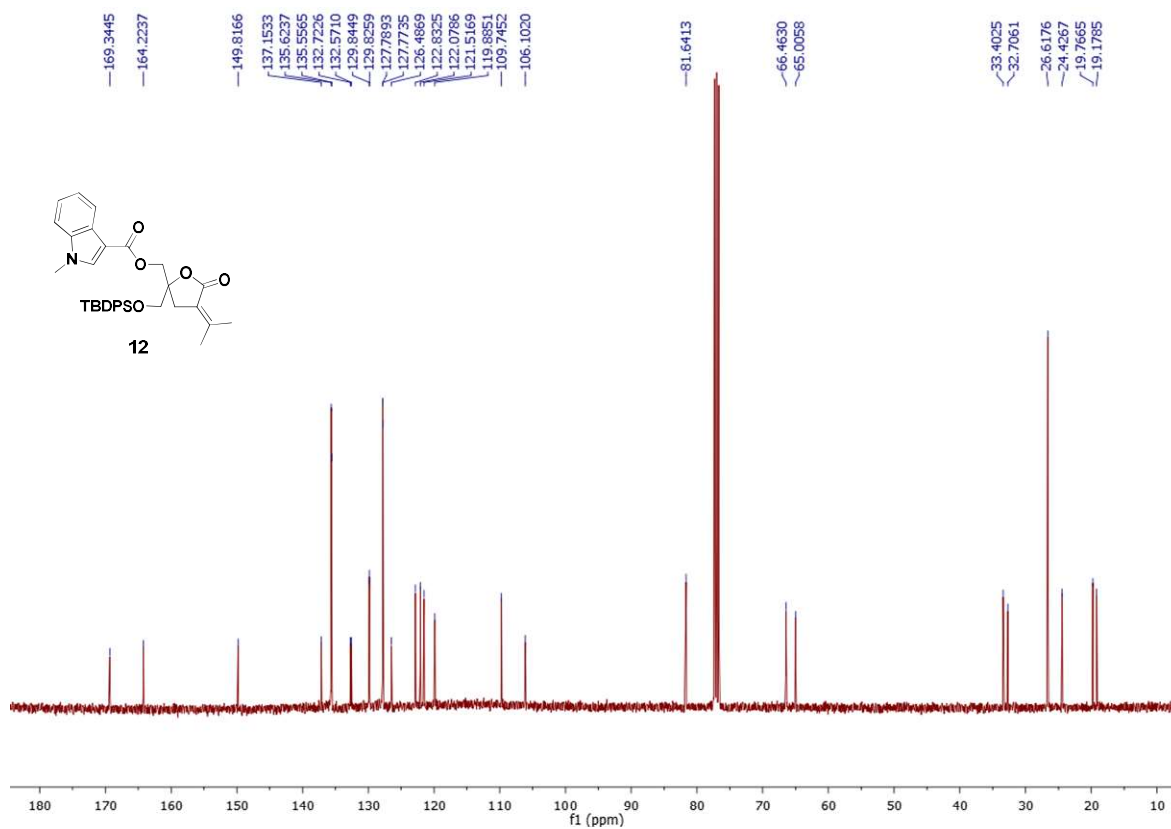


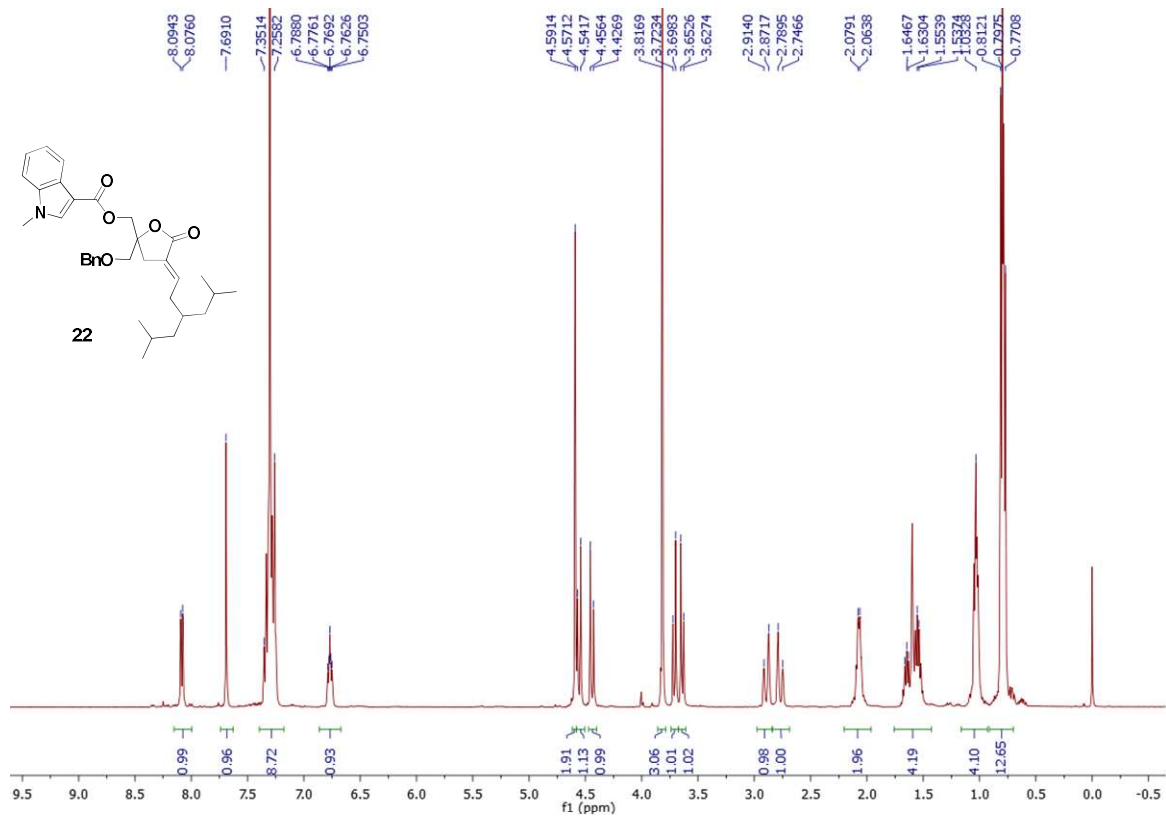
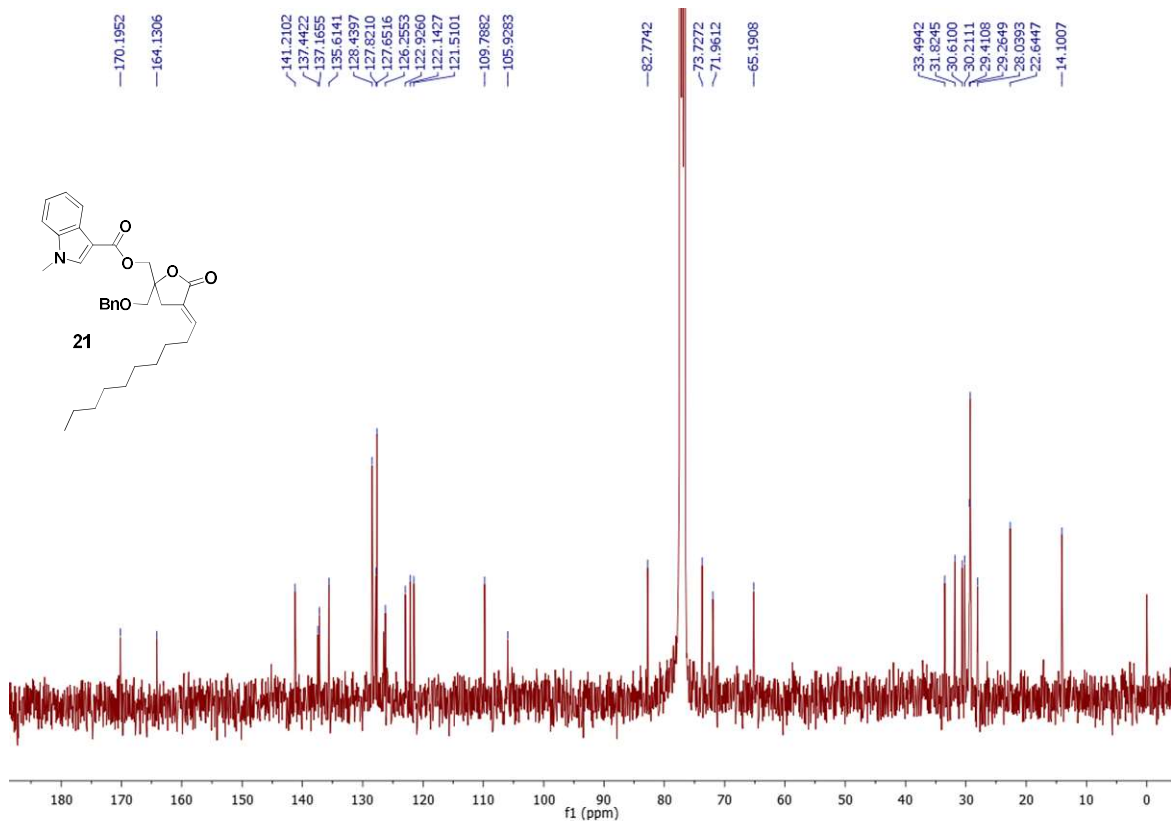


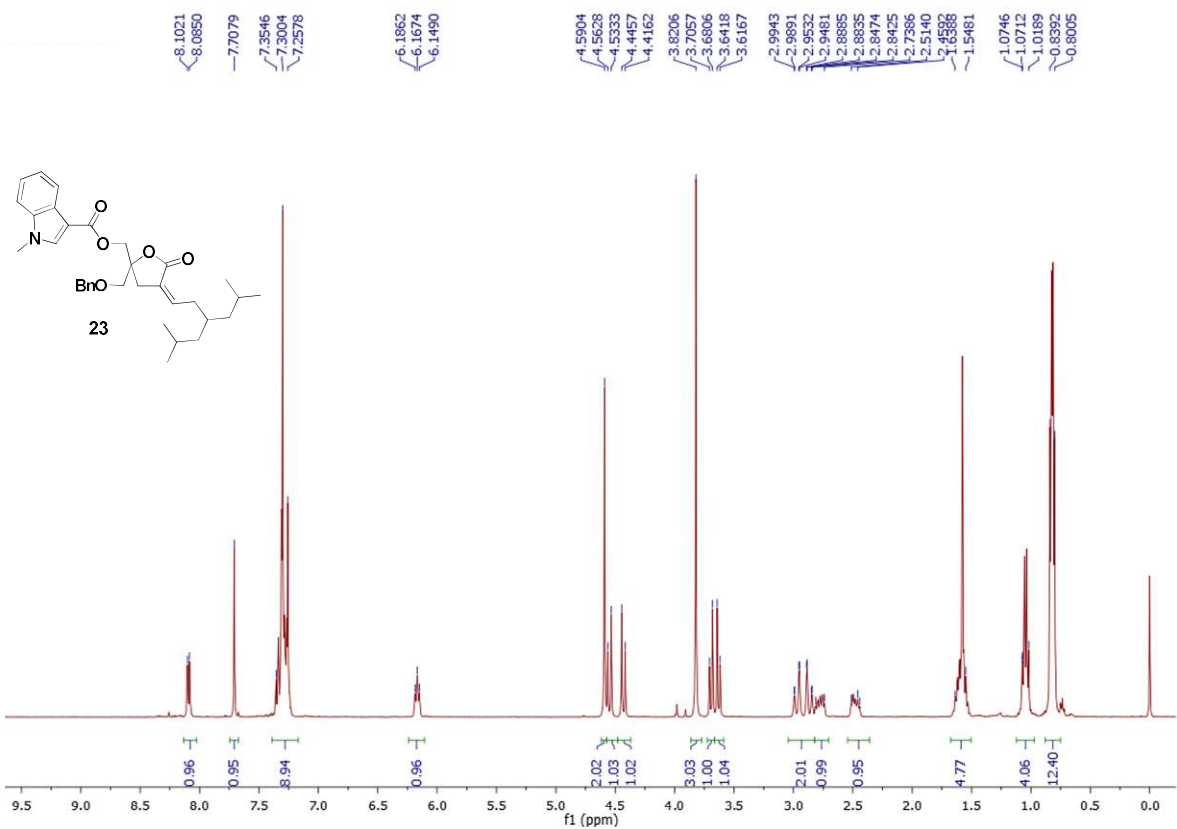
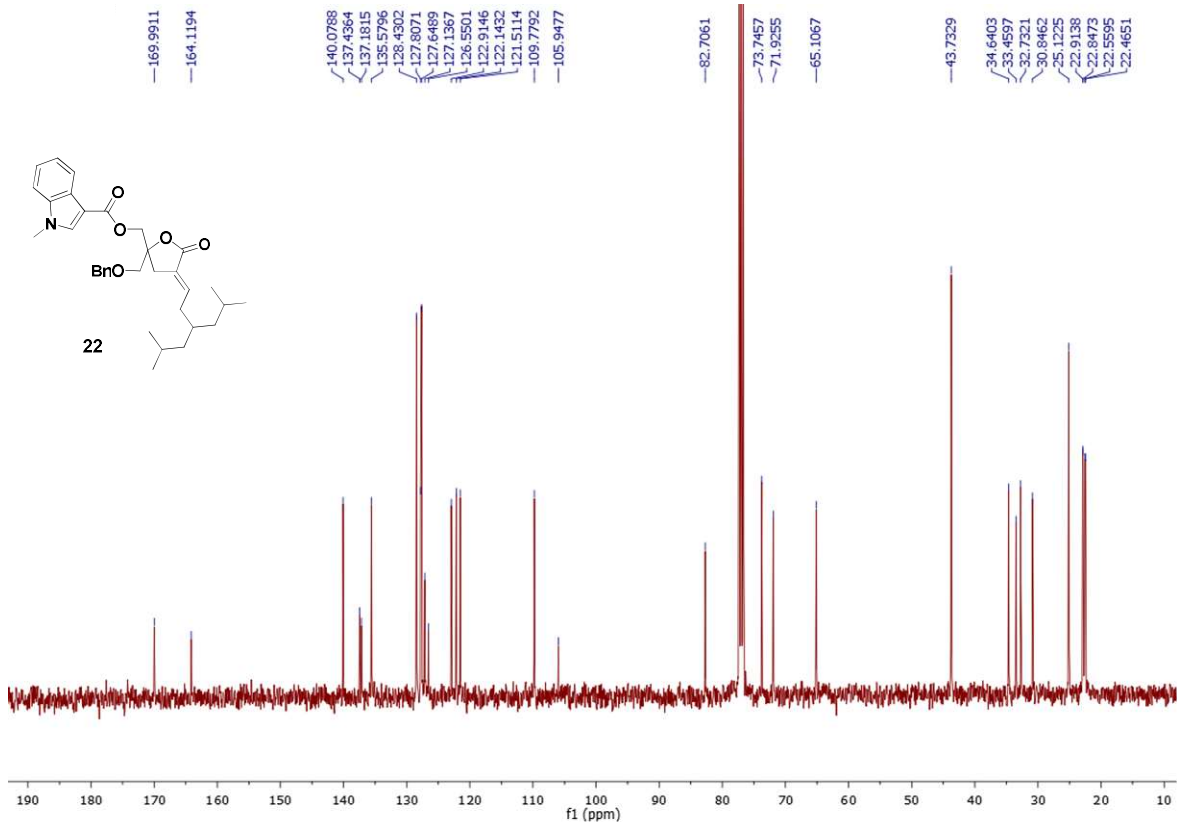


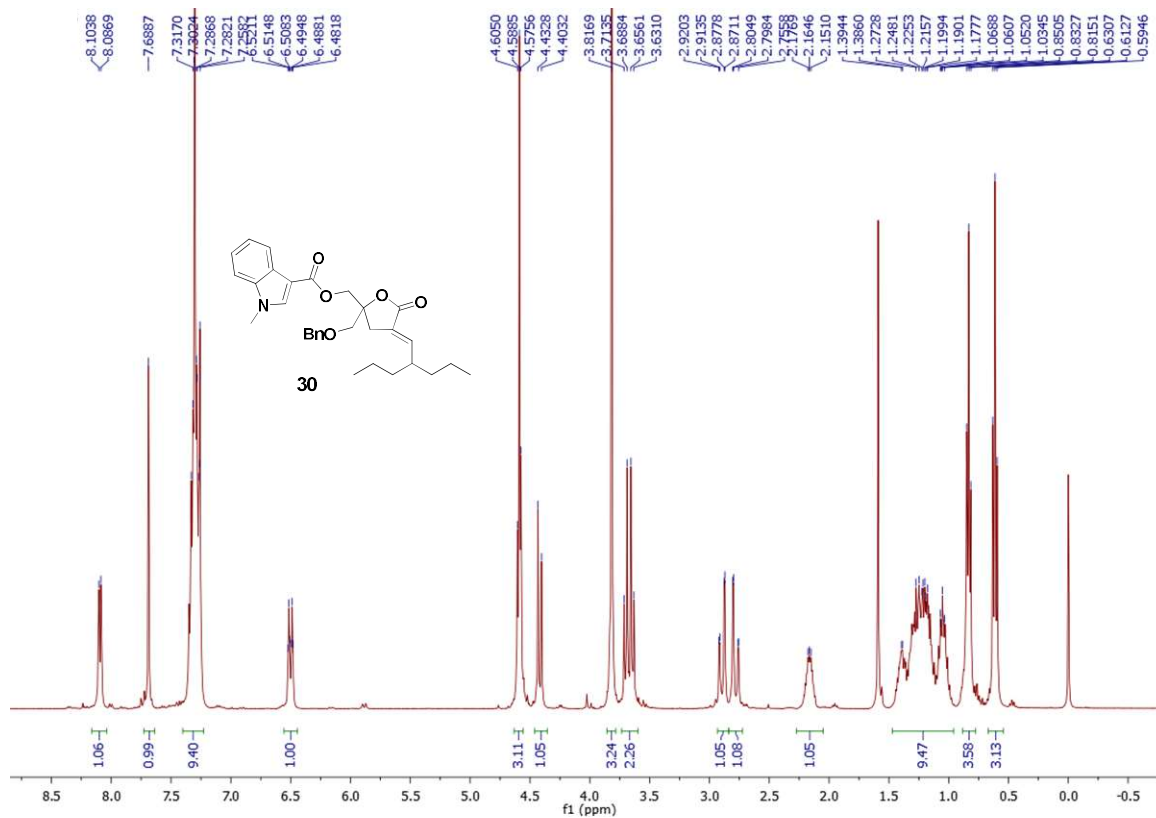
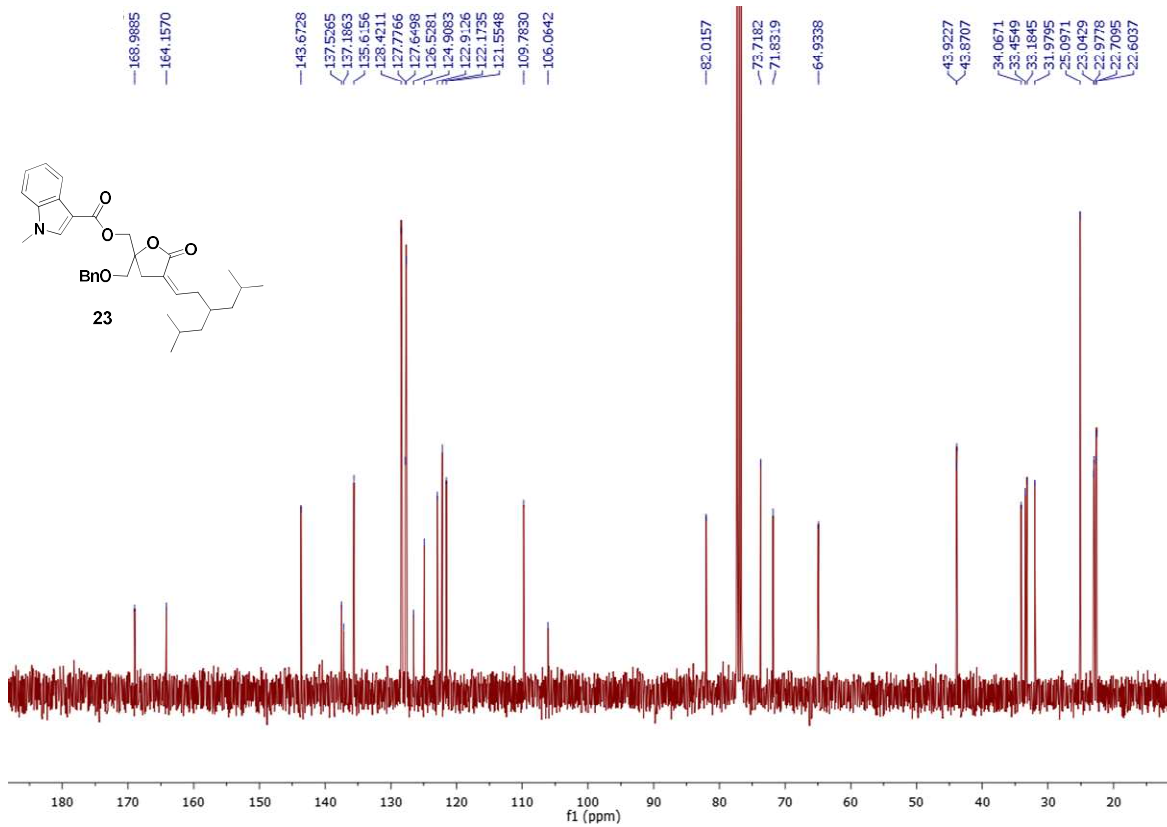


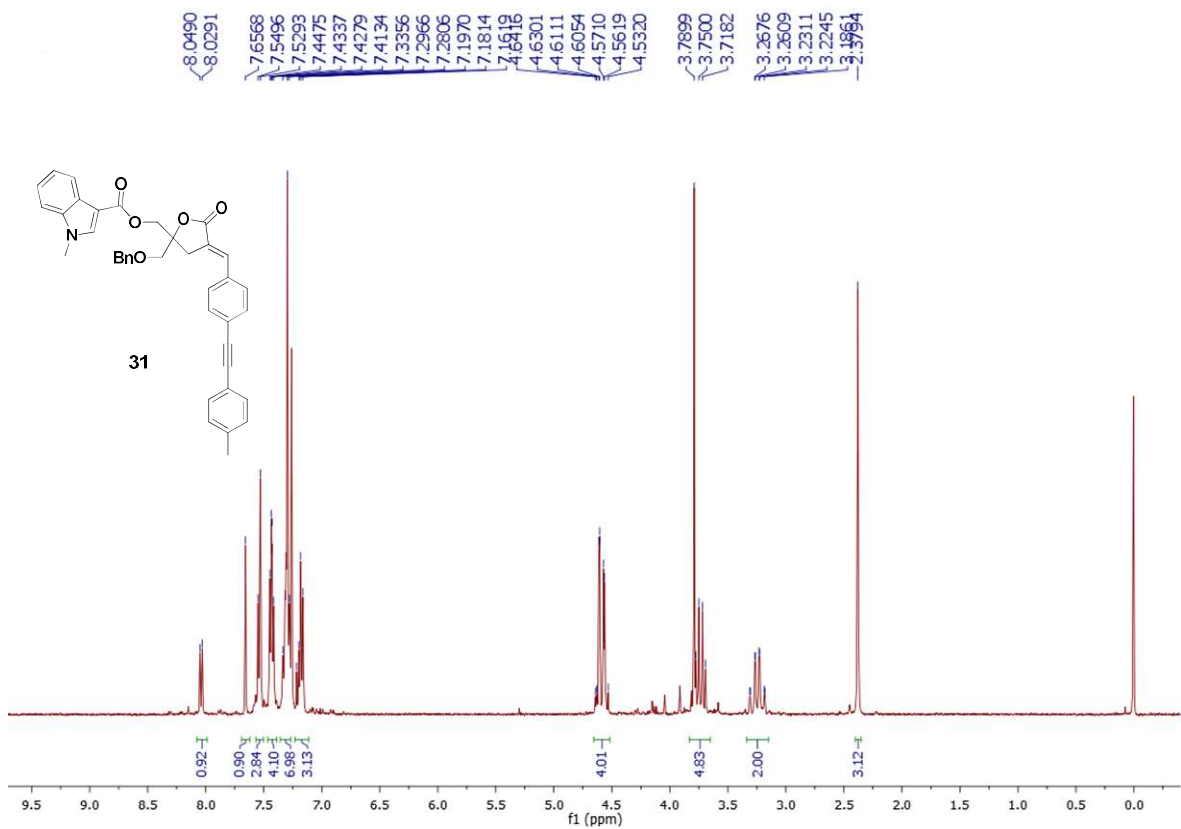
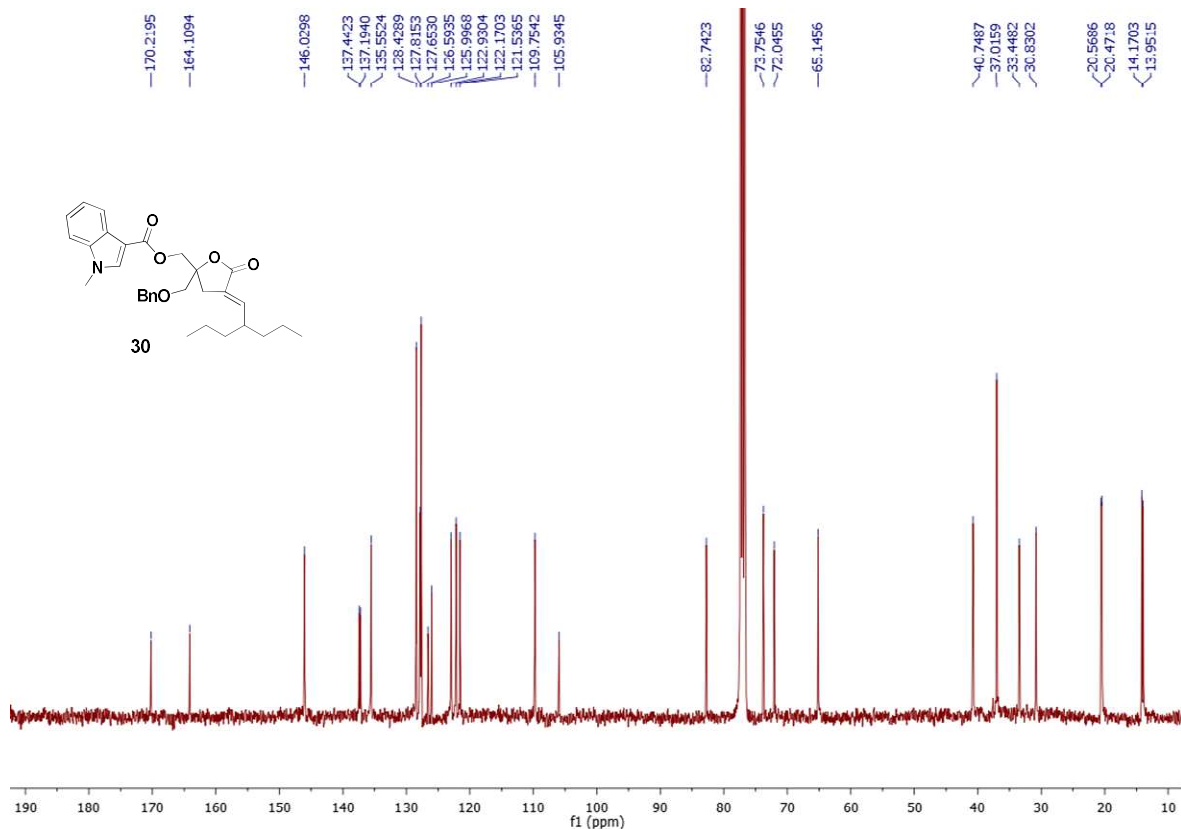


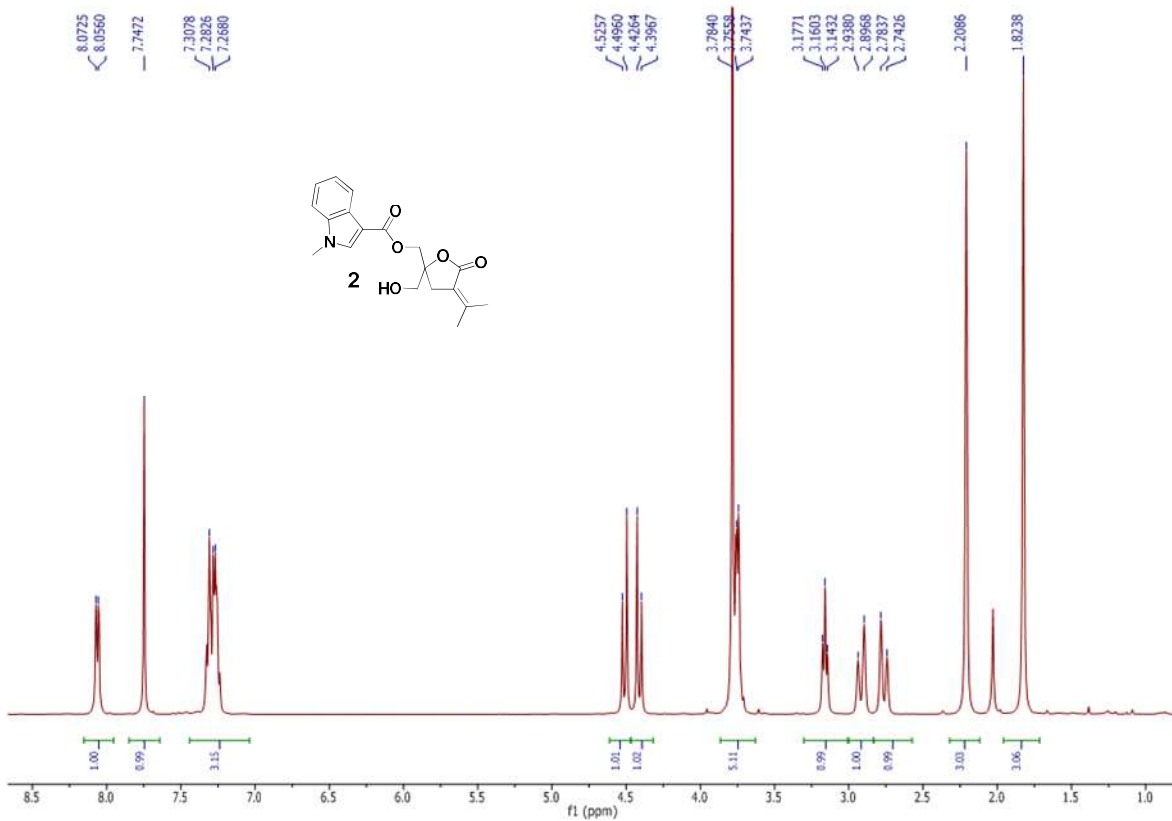
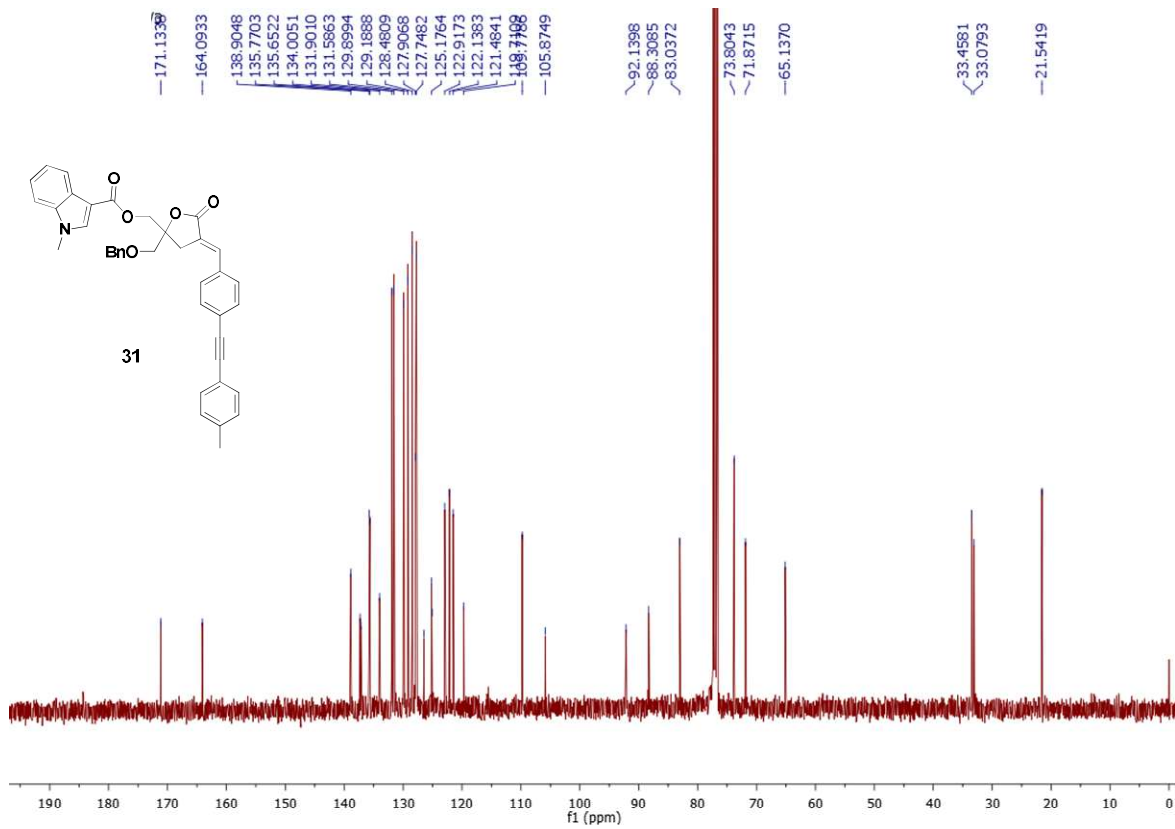


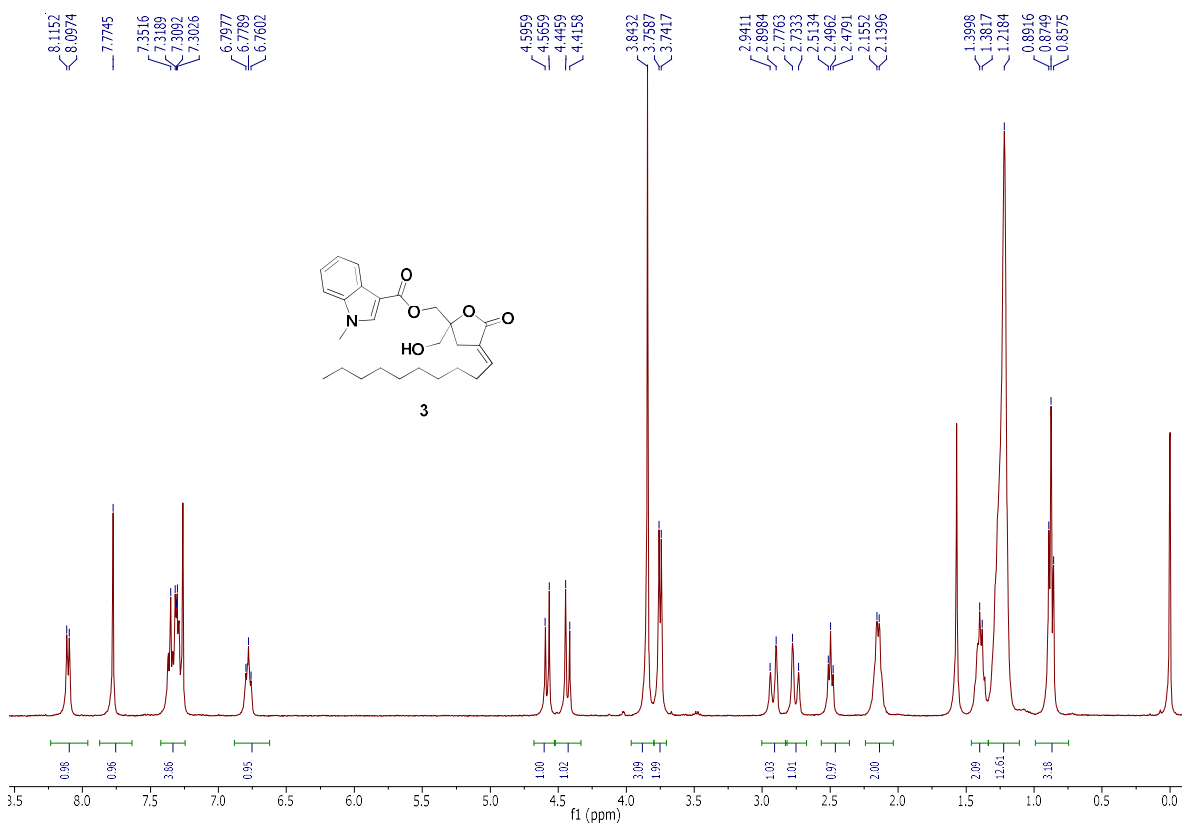
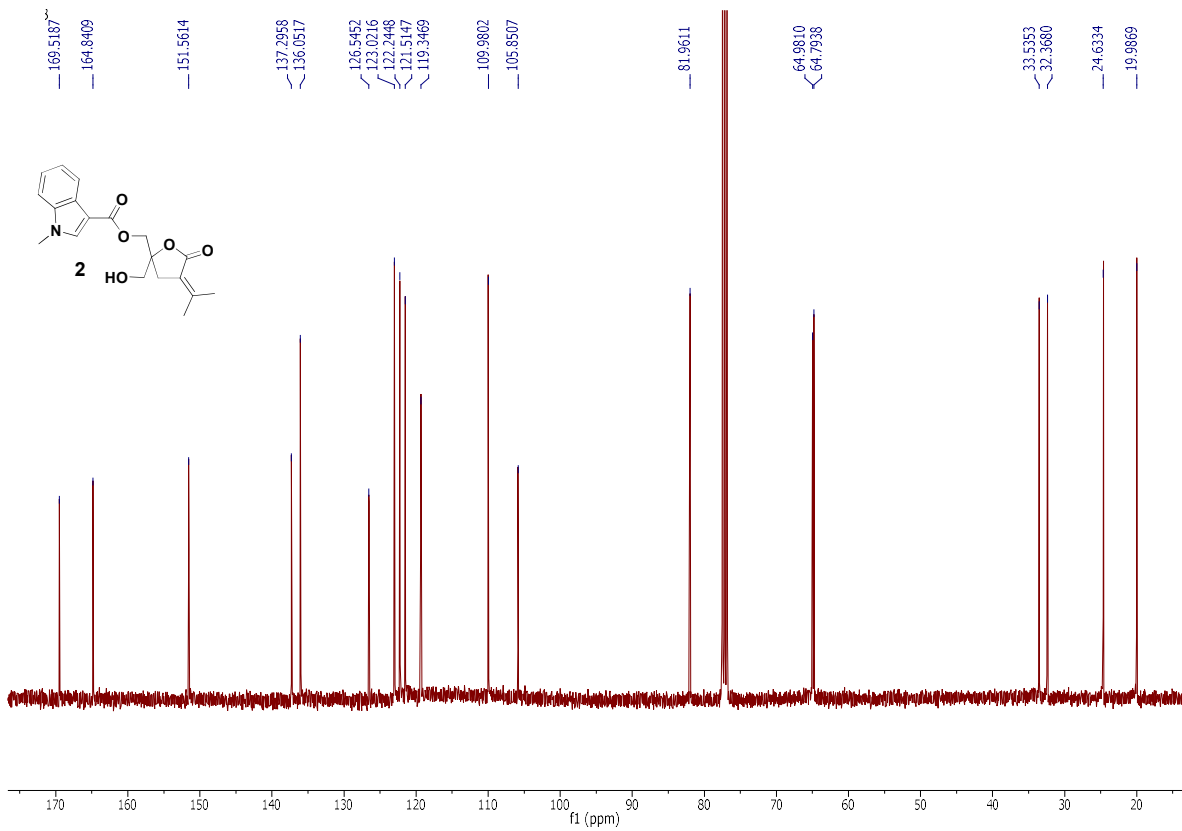


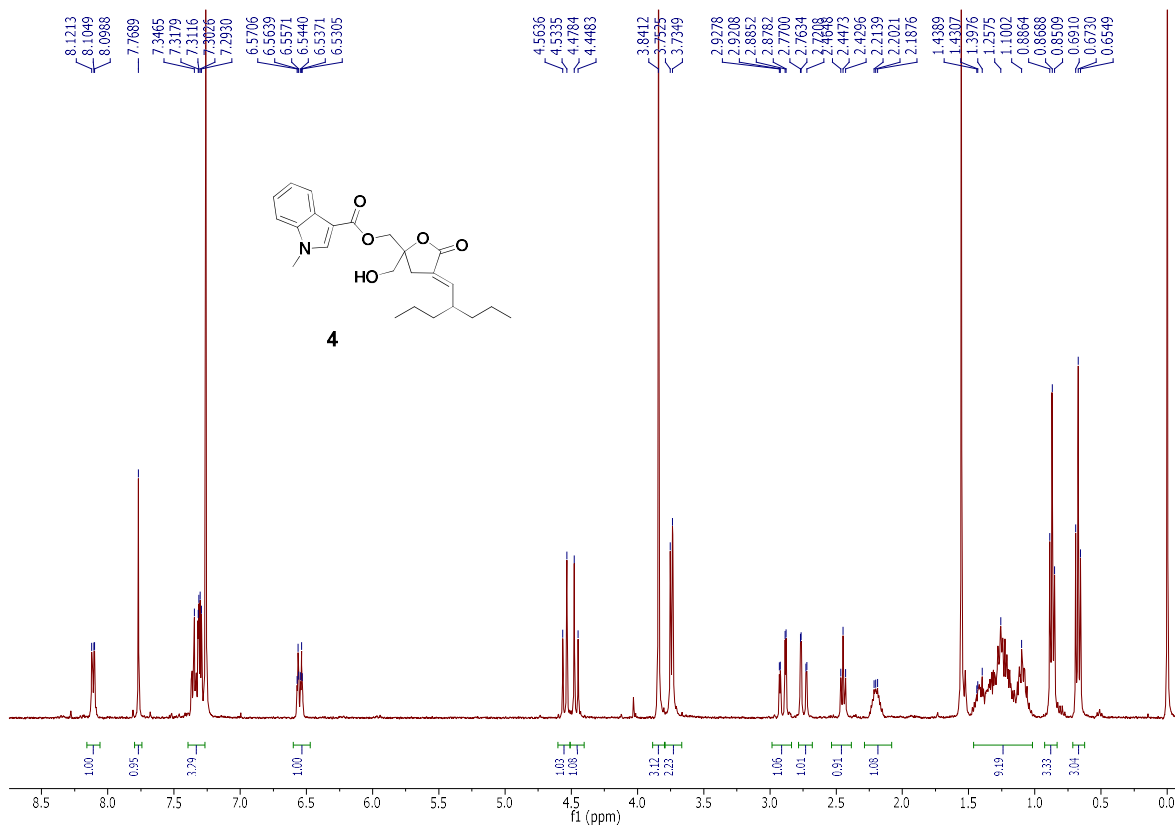
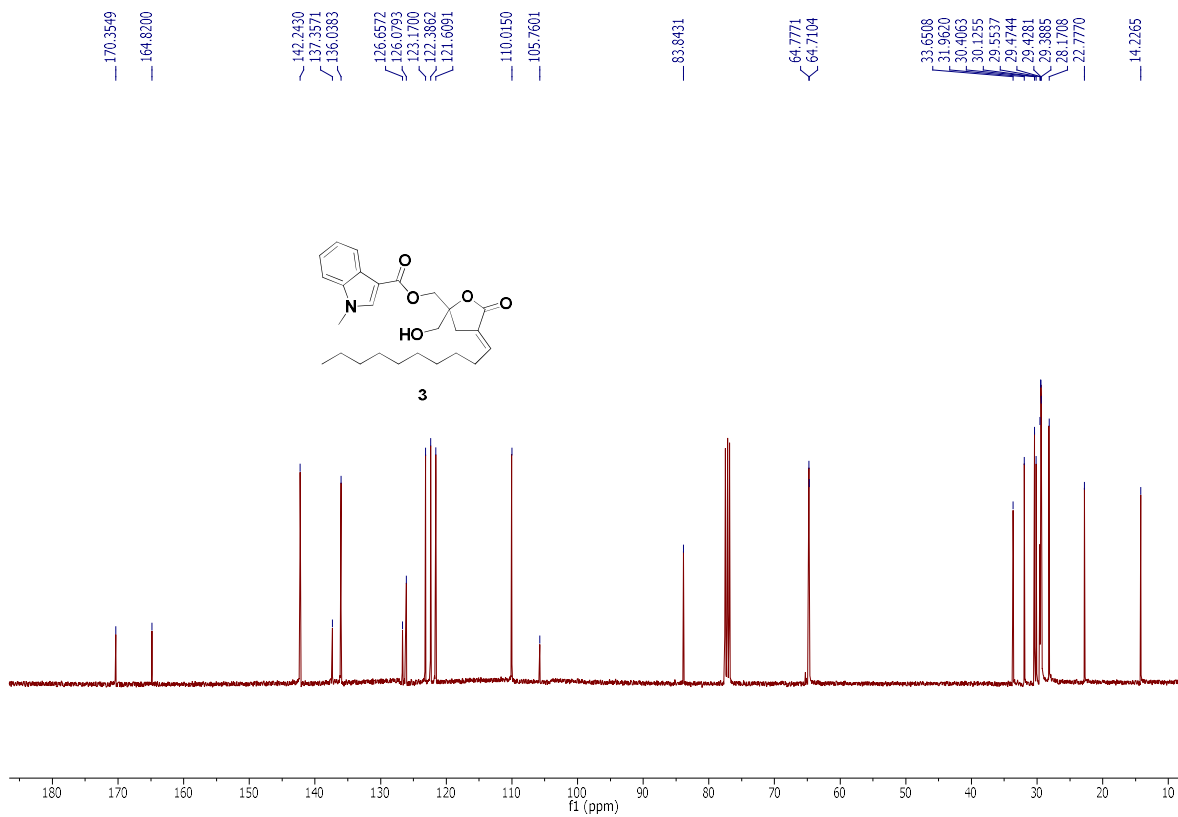


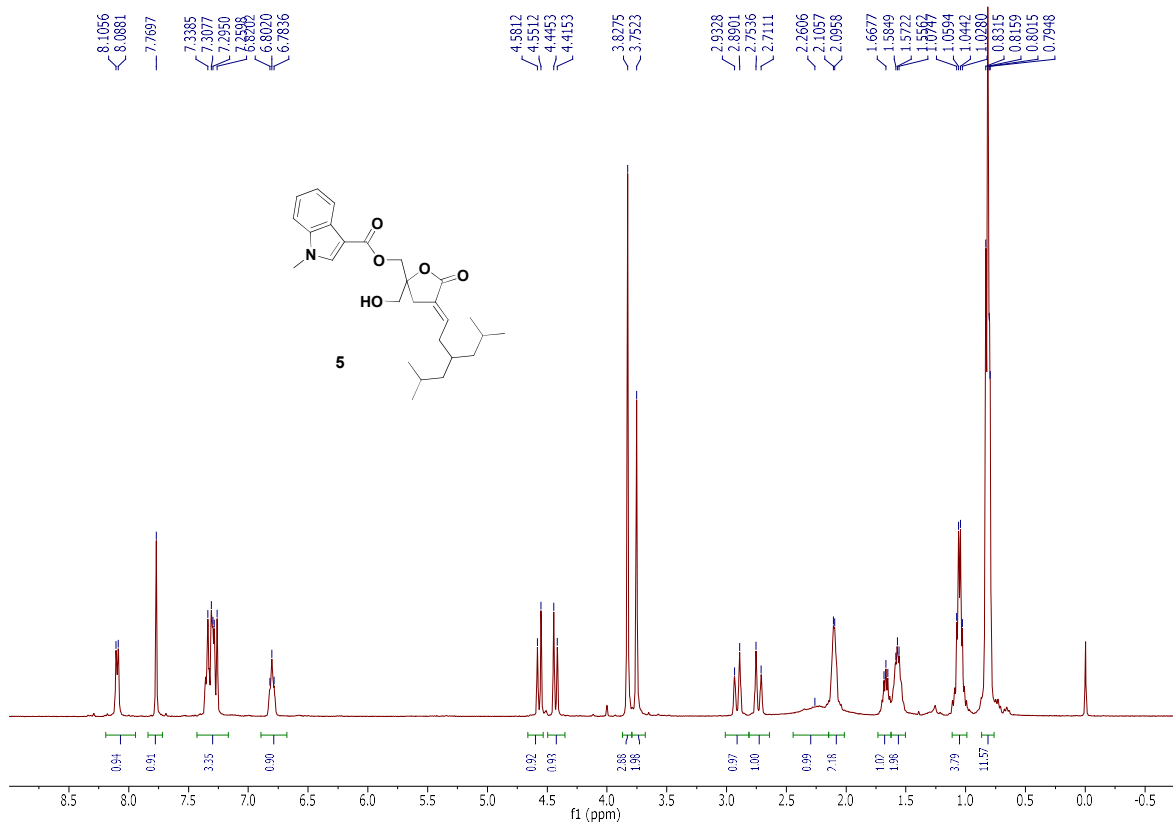
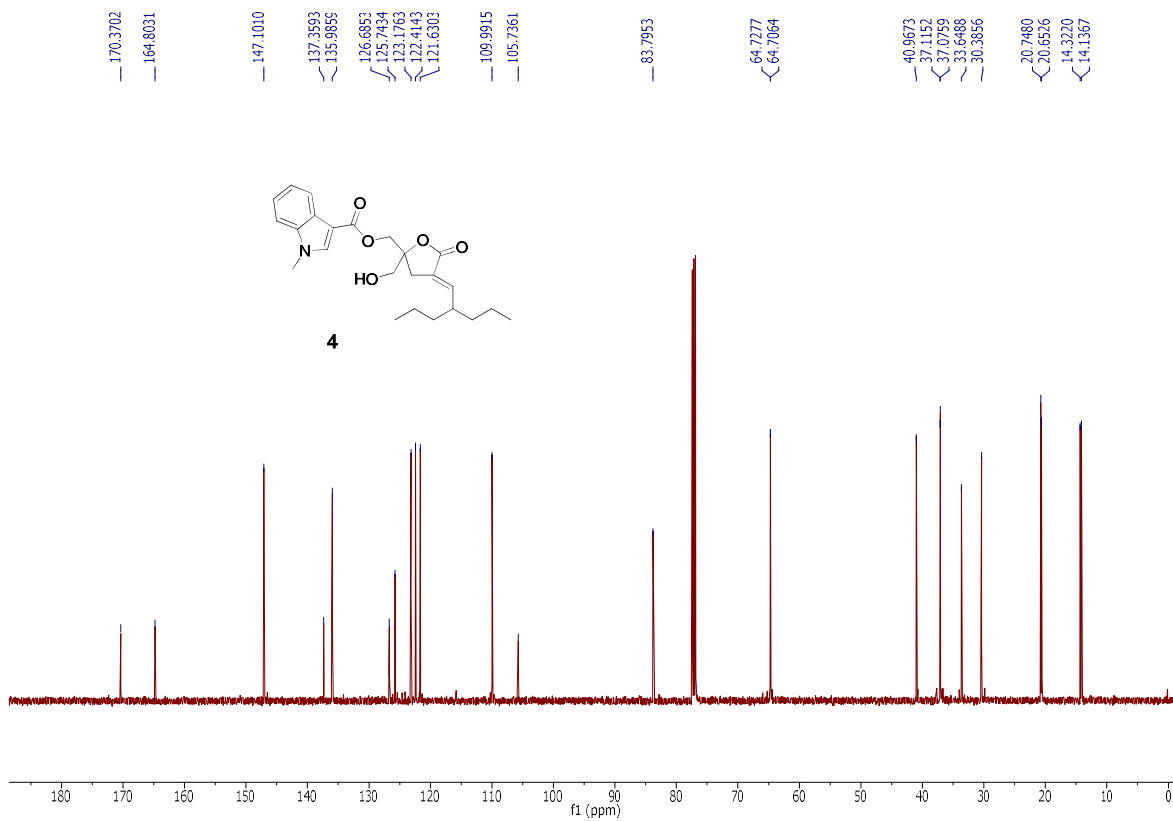


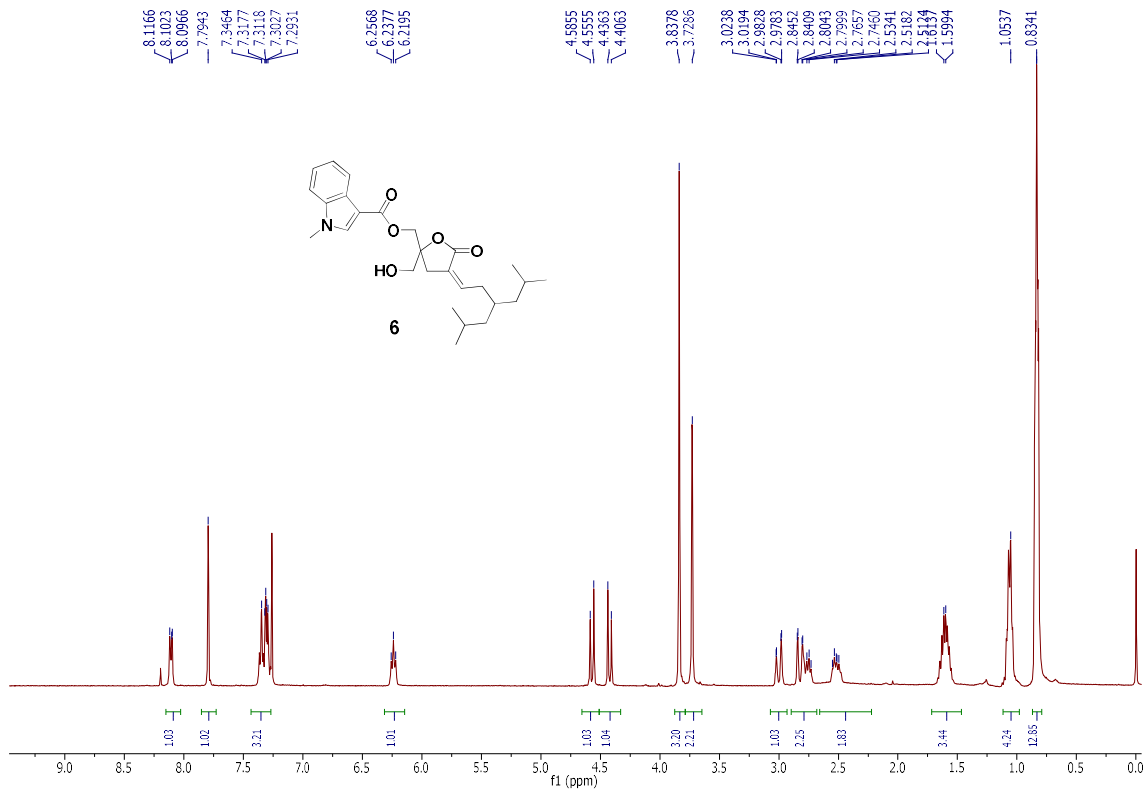
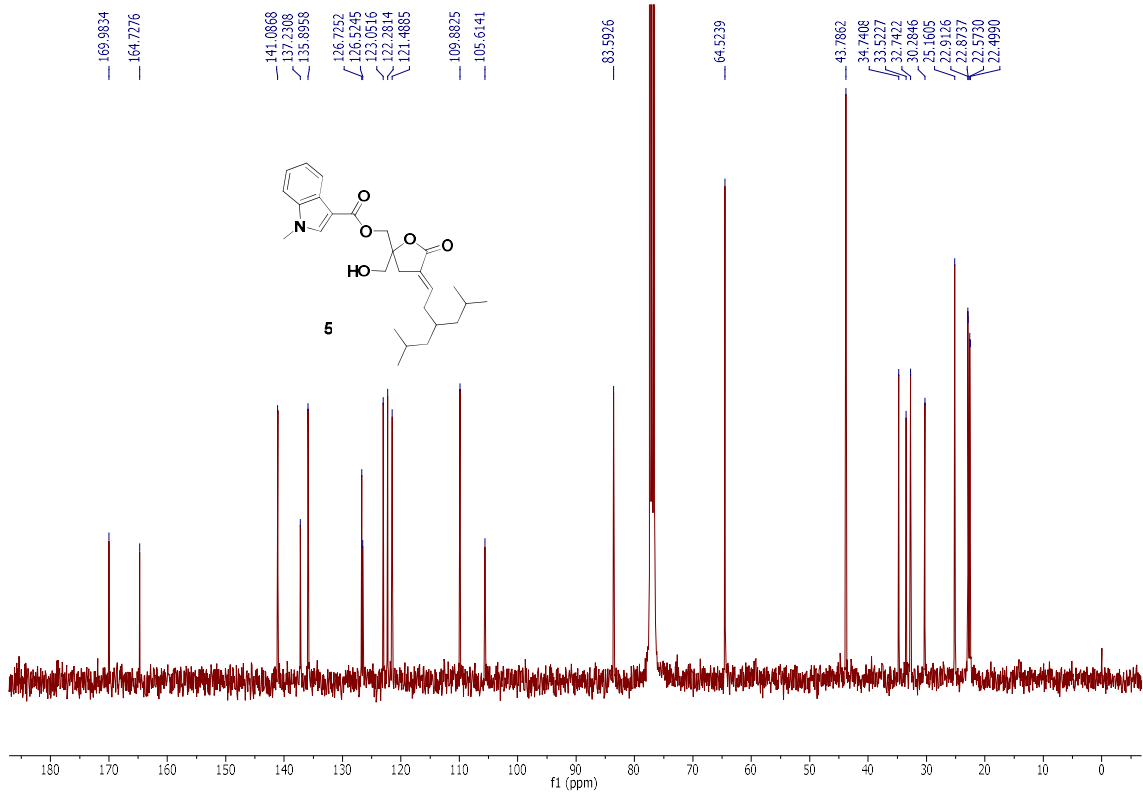


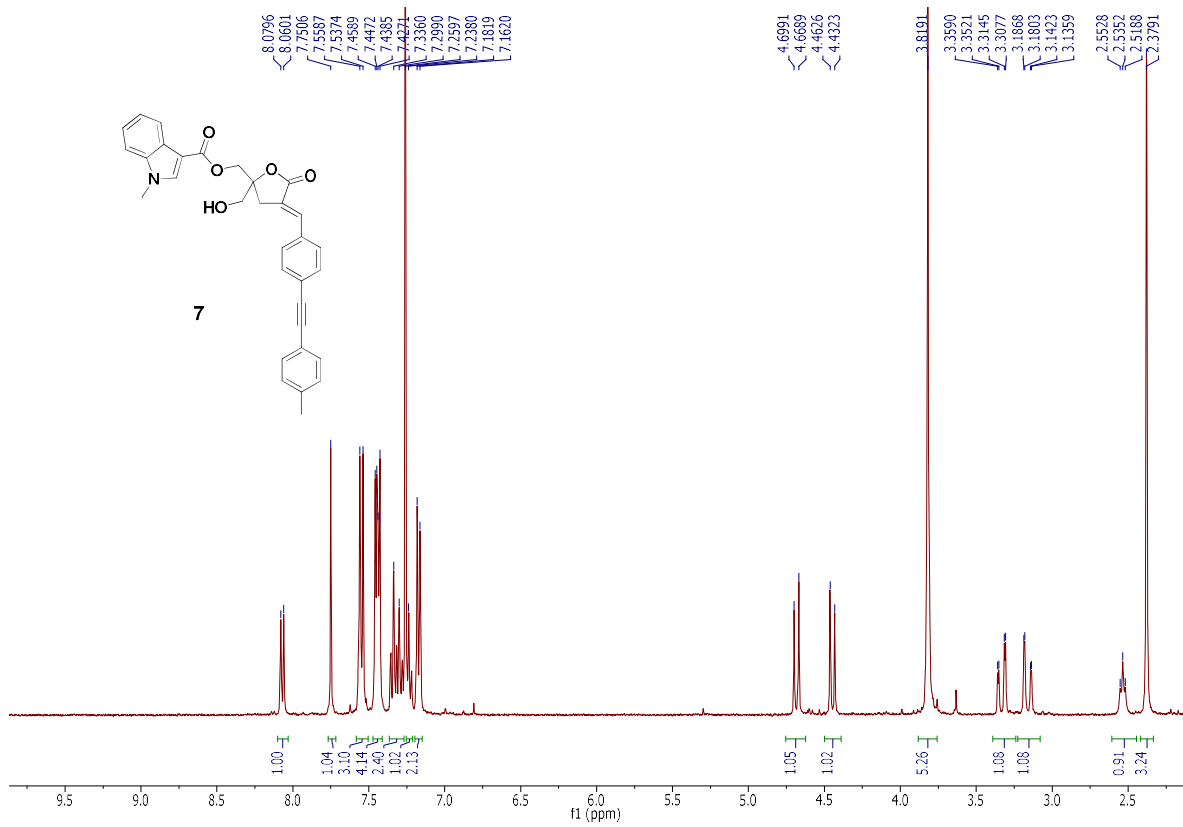
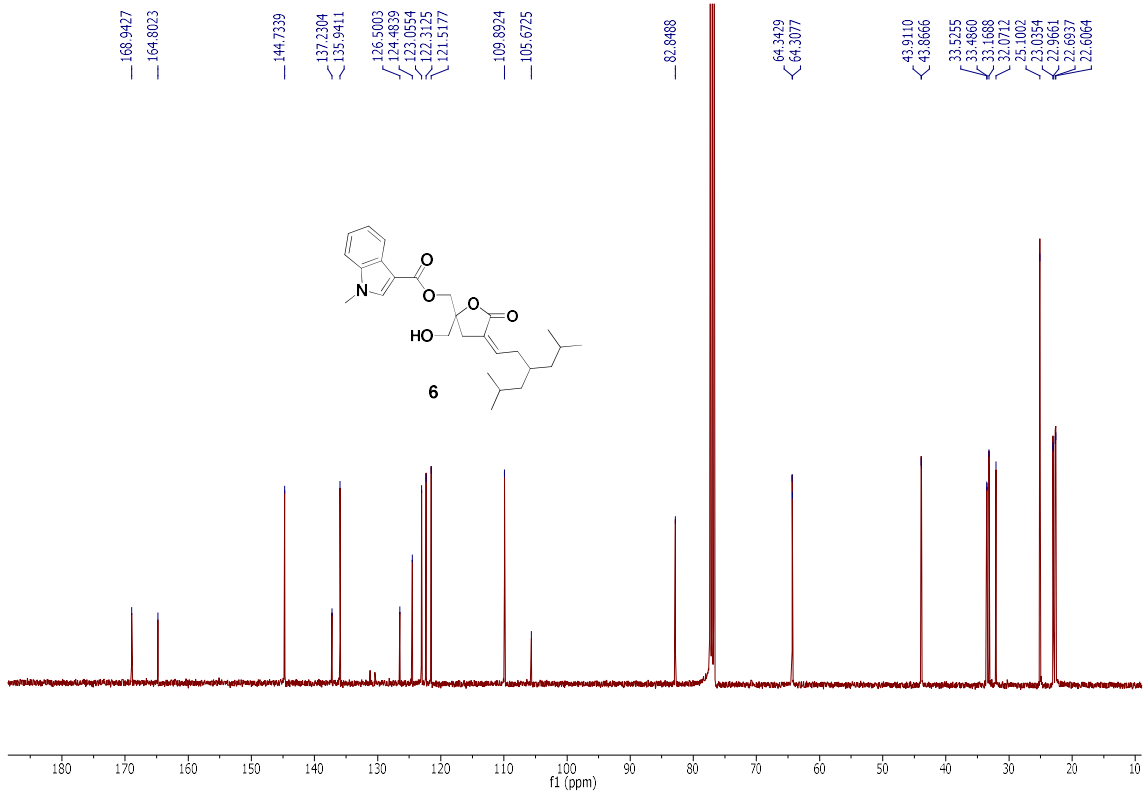


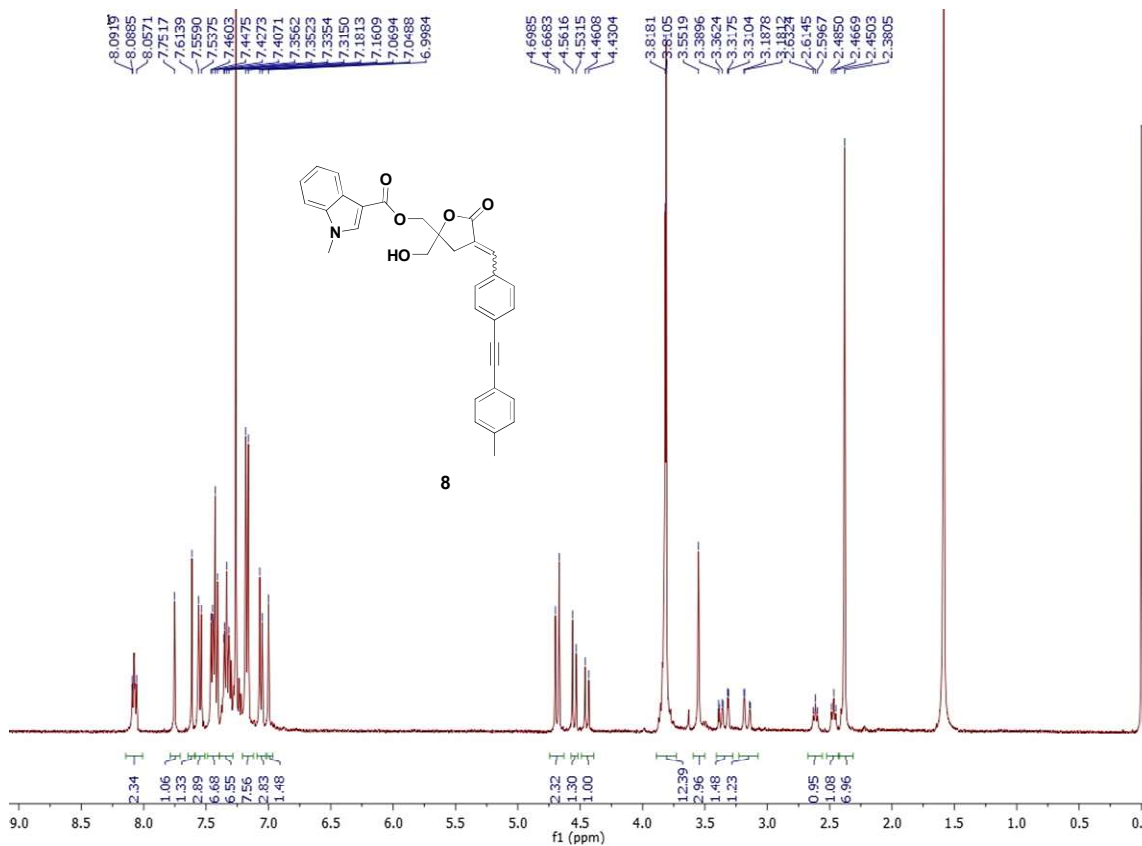
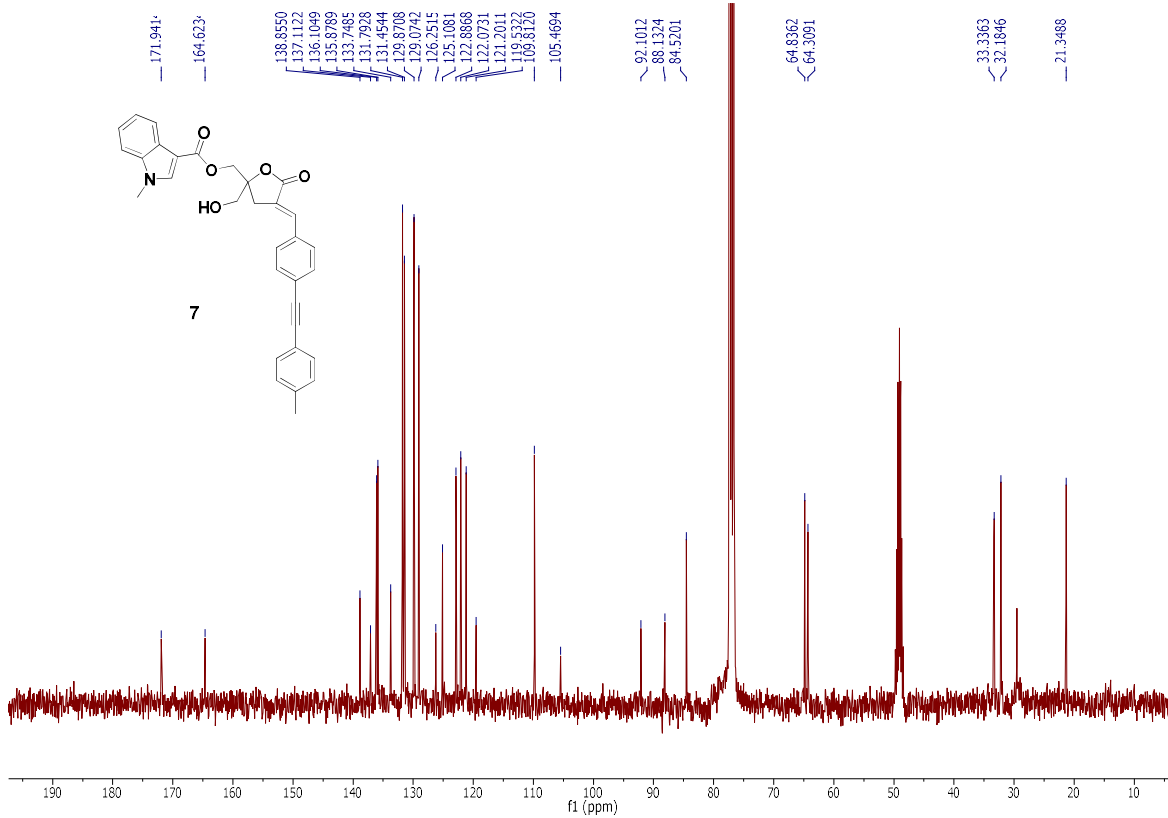


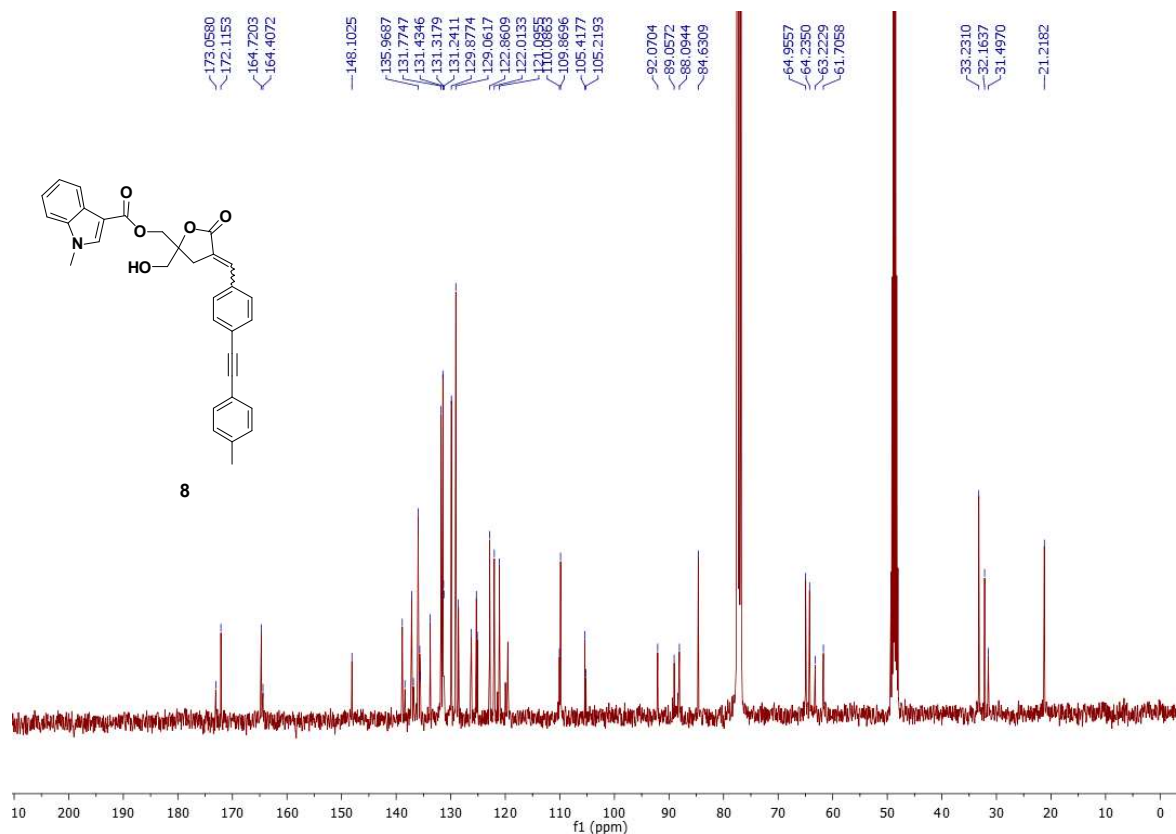








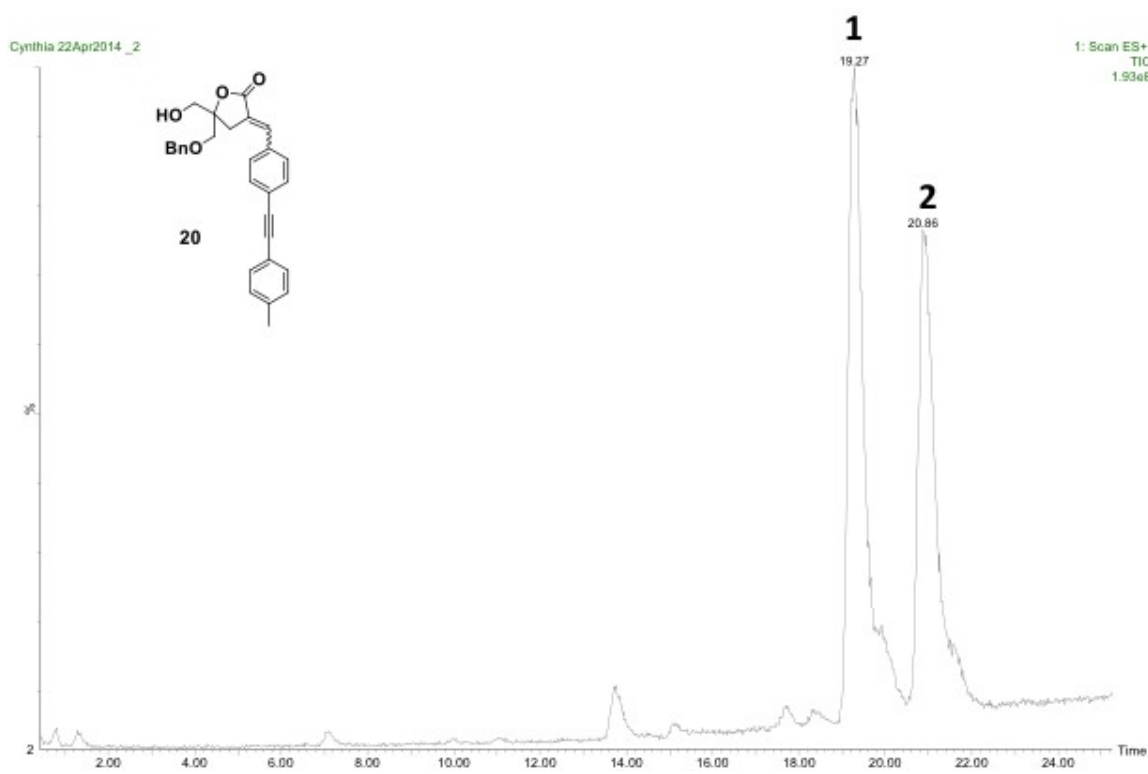




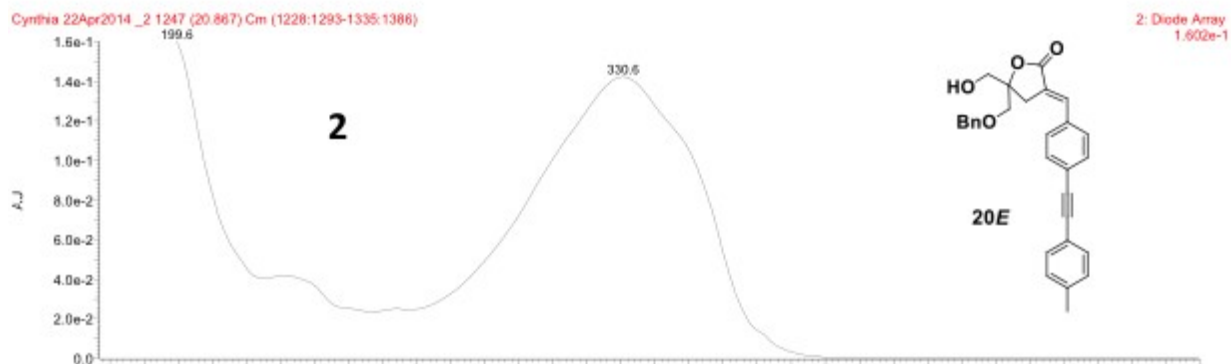
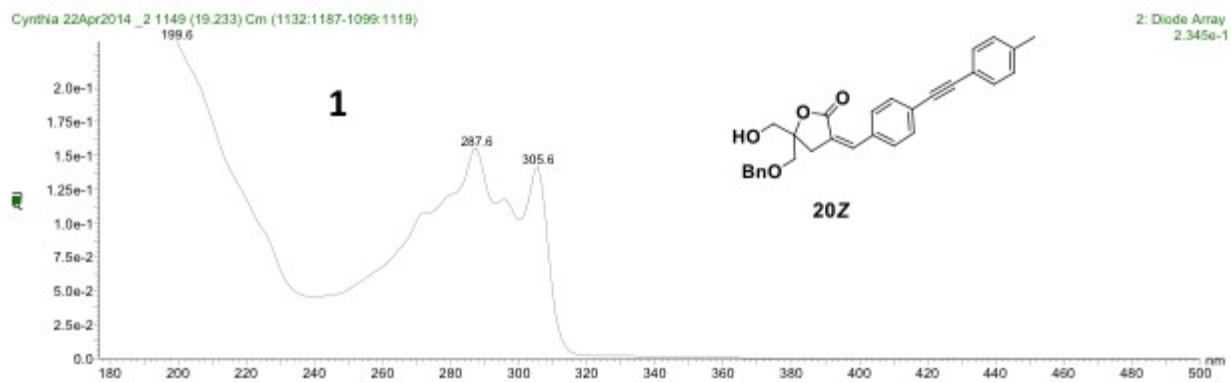
HPLC Analysis of **20** (*E/Z*)

PDA-LC/MS analysis was performed on a Waters Alliance 2695 HPLC system with a PDA detector on a XTerra MS C18 column (Waters, Milford, MA, USA, 100 mm × 2.1 mm, 3.5 μm), attached to a Quattro Premier XE triple-quadrupole mass spectrometer (Waters, Milford, USA). The mobile phase A was H₂O (0.1% formic acid) and the mobile phase B was acetonitrile (0.1% formic acid). Gradient elution was set as follows: 0–0.1 min, 32.5% to 73% B in 30 min. The mobile phase flow rate was set at 0.5 mL·min⁻¹. The column temperature was kept at 40 °C.

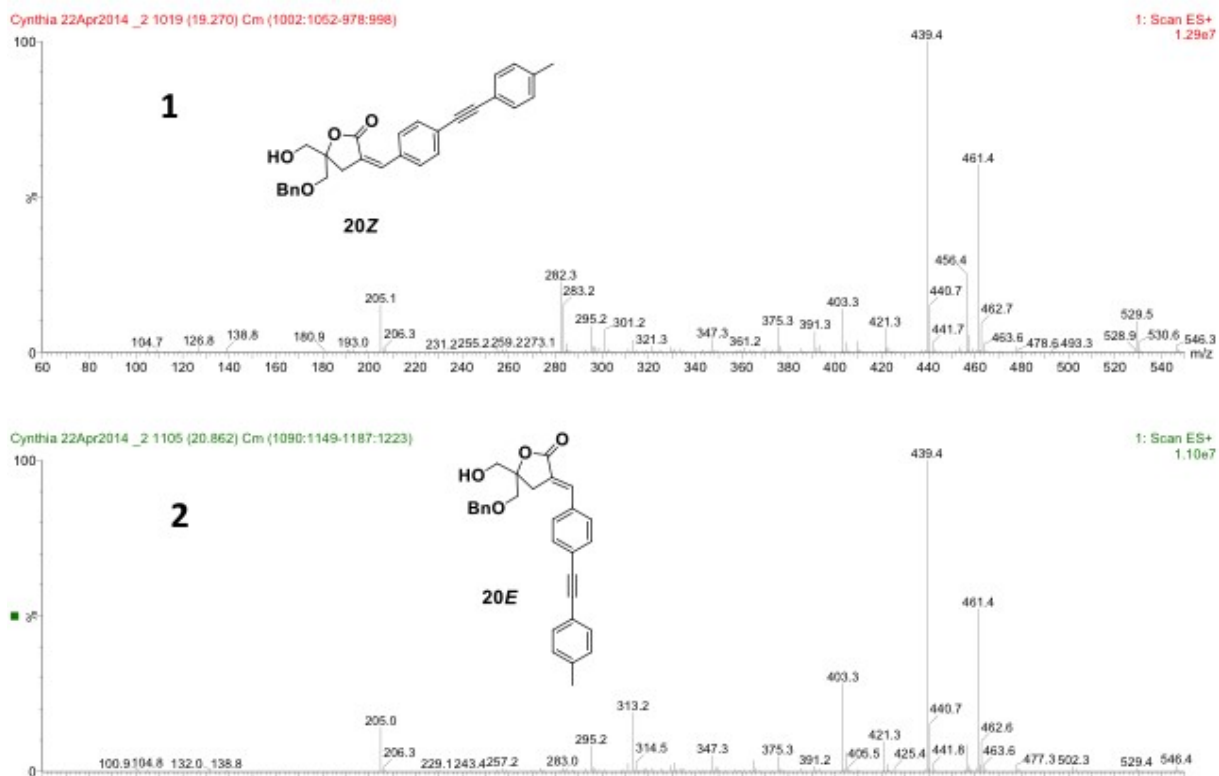
(A)



(B)



(C)



(A) HPLC-MS chromatogram of **20** (E/Z mixture). Retention times: peak **1**, 19.27 min; peak **2**, 20.86 min. (B) UV spectra: peak **1** corresponding to *Z* isomer and peak **2** corresponding to *E* isomer. (C) MS spectra of peak **1** and **2**. Both peaks showed the same $(M+H)^+$ (439) and $(M+Na)^+$ (461) species that are in agreement with the proposed structures. E/Z assignments from UV spectra were made by comparison with related compounds.