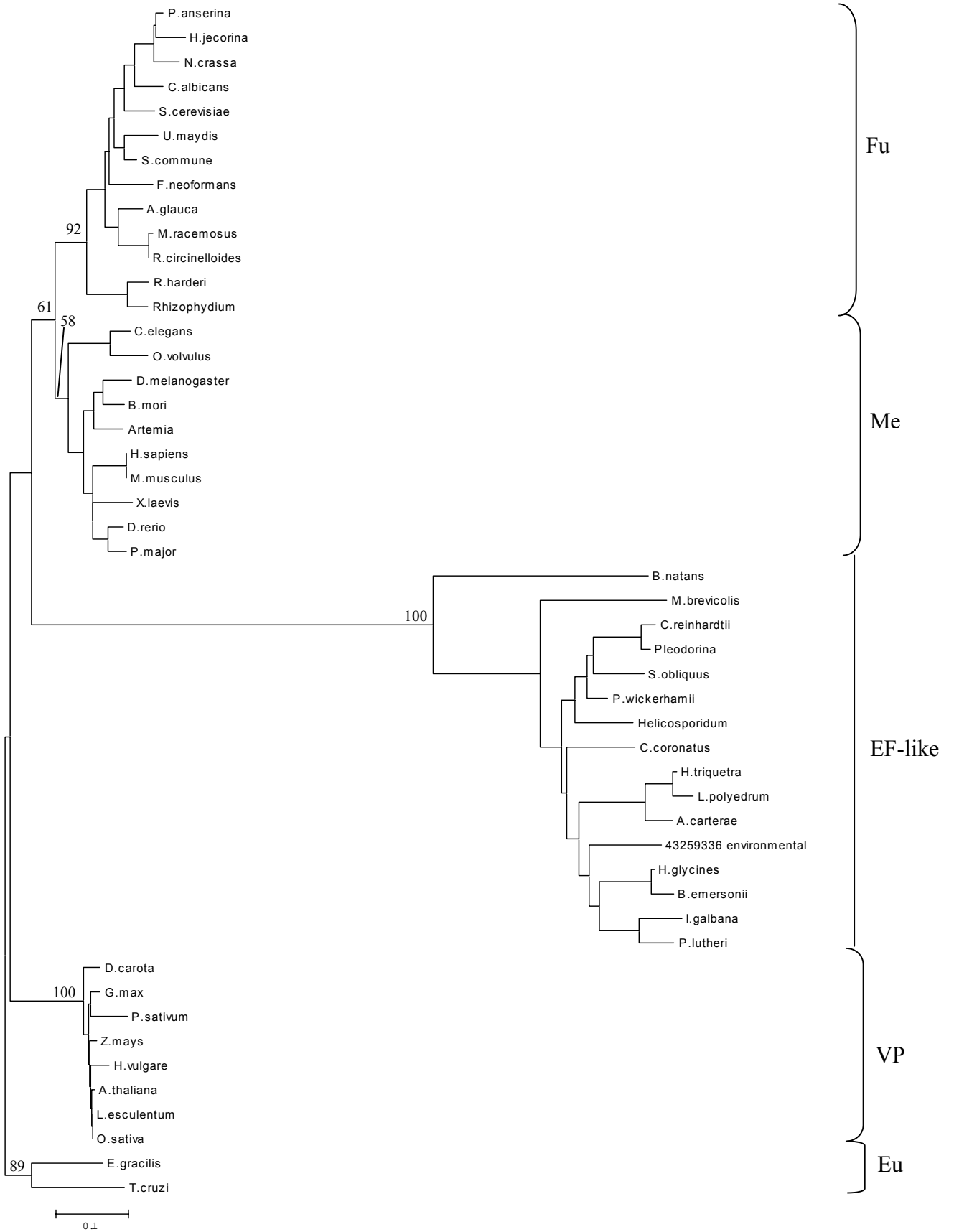
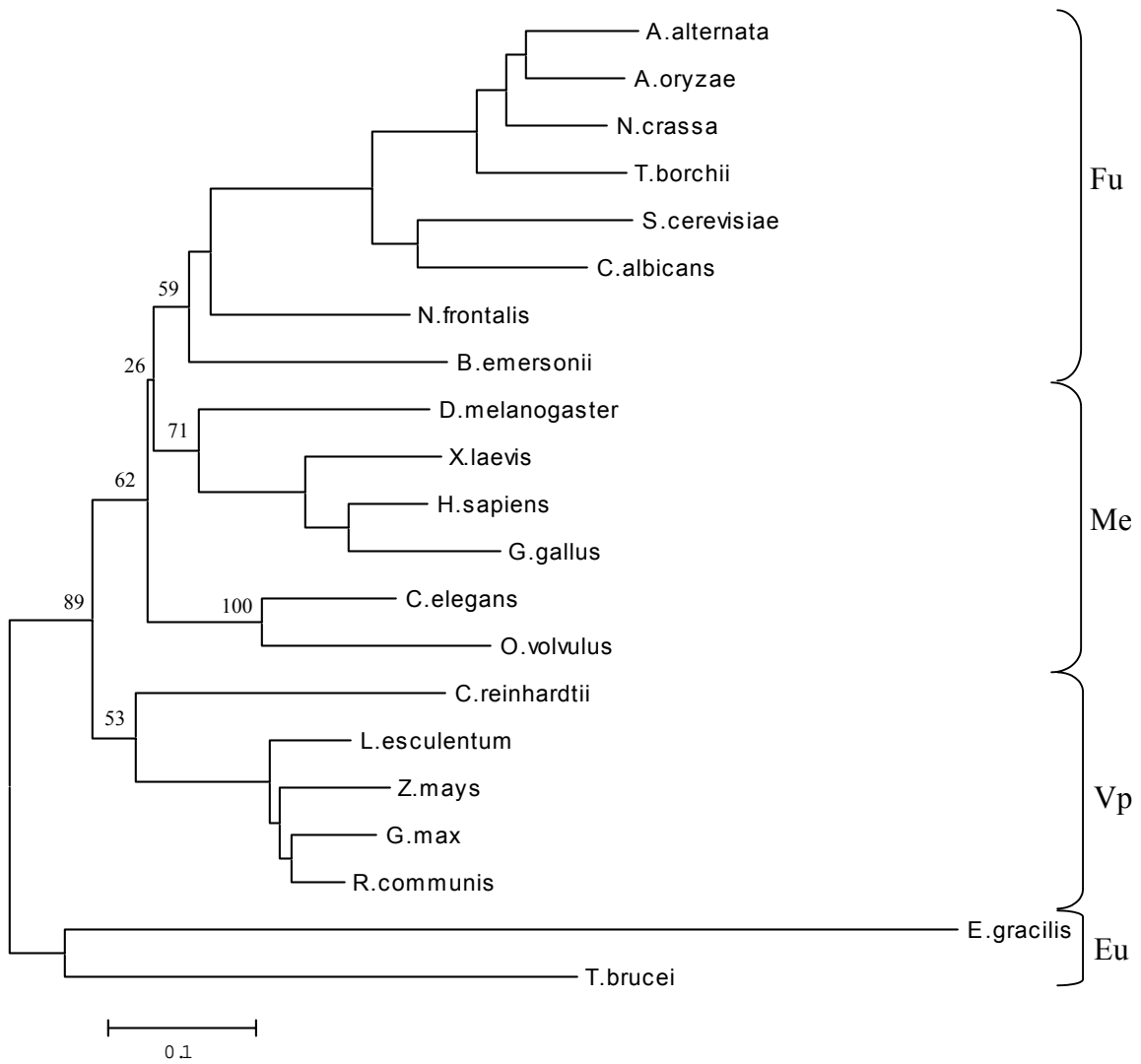


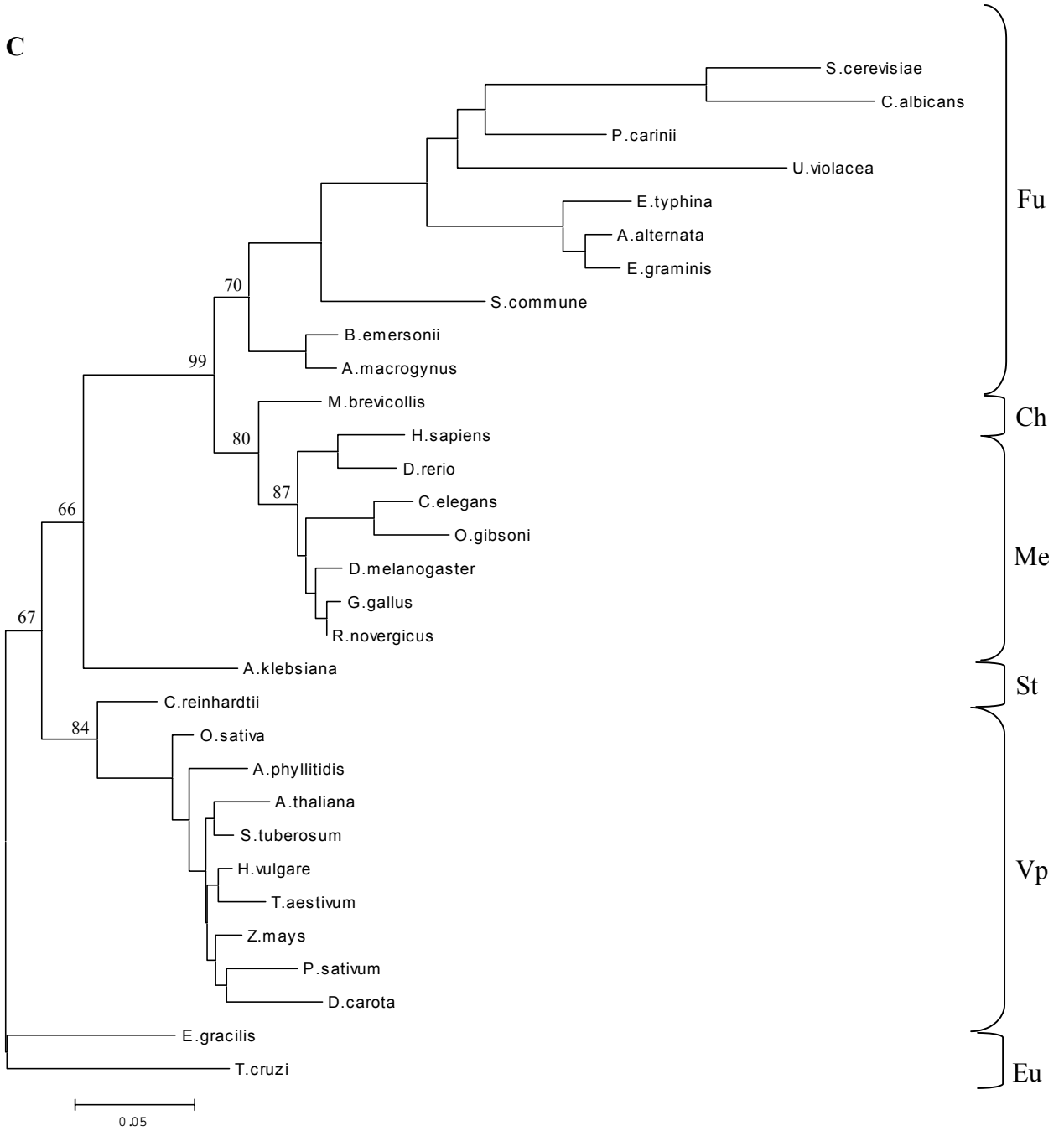
A



B



C



Supplementary Figure 2S. Distance (Neighbor-joining) trees for EF-1 α (A), enolase (B) and β -tubulin (C) sequences. Main bootstrap proportions are shown at the internodes. The evolutionary distance between two sequences is obtained by summing the lengths of the connecting branches along the horizontal axis, using the scale at the bottom. See (23) for details of EF-like sequences. Vp, Viridiplantae; Me, Metazoa; Fu, Fungi; Ch, Choanoflagellates; Eu, Euglenozoa; St, Stramenopile. See ref. 23 for details about EF-like sequences.

Viridiplantae: *C. reinhardtii*, *Chlamydomonas reinhardtii* (gi|18142, gi|167455); *P. sativum*, *Pisum sativum* (gi|1235582, gi|20757); *A. thaliana*, *Arabidopsis thaliana* (gi|8778823); *L. esculentum*, *Lycopersicon esculentum* (gi|295810, gi|19280); *Z. mays*, *Zea mays* (gi|2282584, gi|22272, gi|22180); *O. sativa*, *Oryza sativa* (gi|2996095, gi|303841); *G. max*, *Glycine max* (gi|18765, gi|42521308); *H. vulgare*, *Hordeum vulgare* subsp. *vulgare* (gi|396134; gi|1743276); *D. carota*, *Daucus carota* (gi|217913, gi|1490664); *R. communis*, *Ricinus communis* (gi|433608); *A. phyllitidis*, *Avena phyllitidis* (gi|296497); *T. aestivum*, *Triticum aestivum* (gi|4098318); *S. tuberosum*, *Solanum tuberosum* (gi|609267). Metazoa: *H. sapiens*, *Homo sapiens* (gi|15421129, gi|182113); *M. musculus*, *Mus musculus* (gi|556300); *R. norvegicus*, *Rattus norvegicus* (gi|57428); *X. laevis*, *Xenopus laevis* (gi|104035, gi|974175); *D. rerio*, *Danio rerio* (gi|454915; gi:23452397); *P. major*, *Pagrus major* (gi|37779017); *B. mori*, *Bombyx mori* (gi|217274); *D. melanogaster*, *Drosophila melanogaster* (gi|7915, gi:7945); *C. elegans*, *Caenorhabditis elegans* (gi|7443405, gi|30145811, gi|6891); *Artemia sp.* (gi|1197188); *O. volvulus*, *Onchocerca volvulus* (gi|119152, gi|32440996); *O. gibsoni*, *Onchocerca gibsoni* (gi|510353); *G. gallus*, *Gallus gallus* (gi|488467, gi|974175, gi|212841). Fungi: *B. emersonii*, *Blastocladiella emersonii* (gi numbers pending); *N. crassa*, *Neurospora crassa* (gi|961482, gi|28919248); *H. jecorina*, *Hypocrea jecorina* (gi|312887); *P. anserina*, *Podospora anserina* (gi|452423); *C. albicans*, *Candida albicans* (gi|170859, gi|170860, gi|170937); *S. cerevisiae*, *Saccharomyces cerevisiae* (gi|1230686, gi|171454, gi|3434); *S. commune*, *Schizophyllum commune* (gi|2897607, gi|4682); *U. maydis*, *Ustilago maydis* (gi|49068500); *F. neoformans*, *Filobasidiella neoformans* (gi|2668565); *A. glauca*, *Absidia glauca* (gi|119141); *M. racemosus*, *Mucor racemosus* (gi|168380); *R. circinelloides*, *Rhizomucor circinelloides* f. *lusitanicus* (gi|8771); *M. insignis*, *Monoblepharis insignis* (gi|19386988); *R. harderi*, *Rhizophlyctis harderi* (gi|19386992); *Rhizophyidium sp.* (gi|19386994); *T. borchii*, *Tuber borchii* (gi|37147851); *A. pullulans*, *Aureobasidium pullulans* (gi|643454); *N. frontalis*, *Neocallimastix frontalis* (gi|515826); *P. carinii*, *Pneumocystis carinii* (gi|9813); *U. violacea*, *Ustilago violacea* (gi|17222315); *E. typhina*, *Epichloe typhina* (gi|2717); *A. alternata*, *Alternaria alternata* (gi|13242906, gi|3688133); *A. oryzae*, *Aspergillus oryzae* (gi|1217827); *E. graminis*, *Erysiphe graminis* subsp. *hordei* (gi|2697); *A. macrogynus*, *Allomyces macrogynus* (gi|6934200). Choanoflagellates: *M. brevicollis*, *Monosiga brevicollis* (gi|16554295, gi|16554291). Stramenopiles: *A. klebsiana*, *Achlya klebsiana* (gi|166301). Euglenozoa: *E. gracilis*, *Euglena gracilis* (gi|119148, gi|18438, gi|8919599); *T. cruzi*, *Trypanosoma cruzi* (gi|2133383, gi|1220544); *T. brucei*, *Trypanosoma brucei brucei* (gi|8132069).