

Supplementary figures

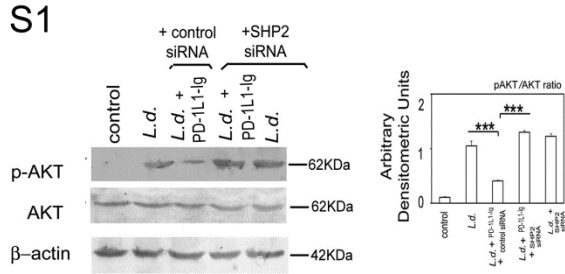


Figure Legend S1:

SHP2 siRNA or control siRNA transfected macrophages were pre-treated with or without PD-1 agonist and infected with *L. donovani* promastigotes for 6 h. Cells were analyzed for p-AKT and AKT levels by Western blot analysis. The data shown are mean \pm S.D. of three independent experiments. $n=3$, $***p < 0.001$; Student's *t* test.

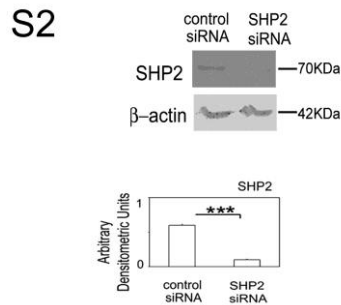


Figure Legend S2:

Expression of SHP2 was analysed in SHP2 siRNA or control siRNA transfected macrophages by immunoblotting. The data shown are mean \pm S.D. of three independent experiments. $n=3$, $***p < 0.001$; Student's *t* test.

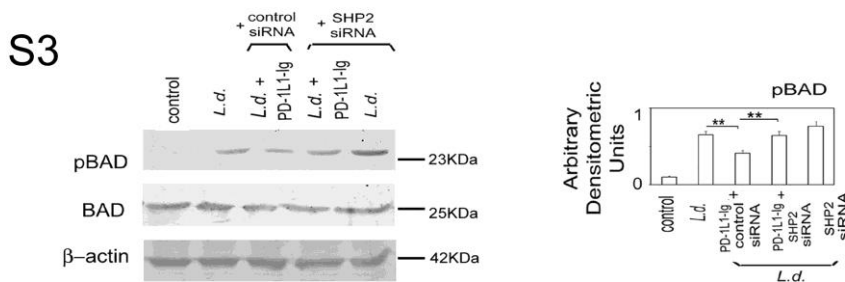


Figure Legend S3:

SHP2 siRNA or control siRNA transfected macrophages were pre-treated with PD-1 agonist and infected with *L. donovani* promastigotes for 6 h. Cell lysates were analyzed for p-BAD and BAD. The data shown are mean \pm S.D. of three independent experiments. $n=3$, $**p < 0.01$; $***p < 0.001$; Student's t test.

S4

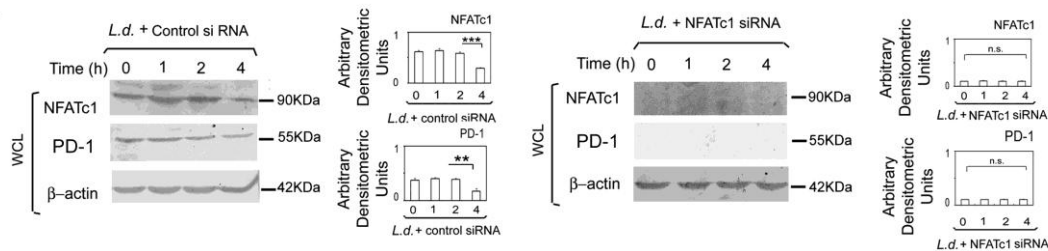


Figure Legend S4:

NFATc1 siRNA or control siRNA transfected macrophages were infected with *L. donovani* promastigotes for indicated times and NFATc1 and PD-1 levels were analysed in whole cell lysates. The data shown are mean \pm S.D. of three independent experiments. $n=3$, n.s. non-significant; $**p < 0.01$; $***p < 0.001$; Student's t test.

S5

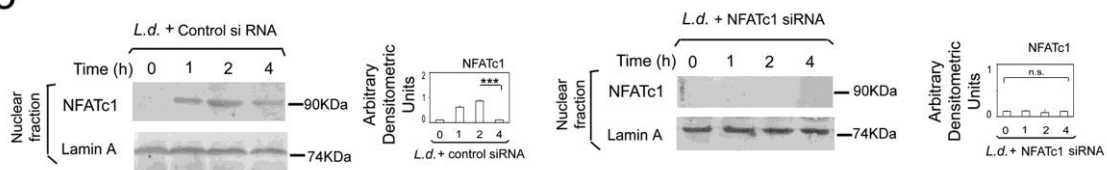


Figure Legend S5:

NFATc1 siRNA or control siRNA transfected macrophages were infected with *L. donovani* promastigotes for indicated times. Cells were lysed, nuclear fractions were prepared and NFATc1 levels were analysed in nuclear fractions by western blotting. The data shown are mean \pm S.D. of three independent experiments. $n=3$, n.s. non-significant; $***p < 0.001$;

Student's t test.

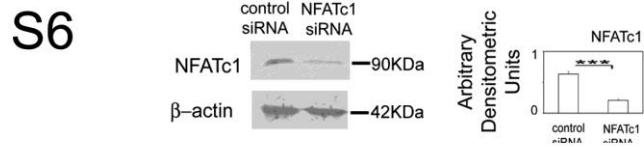


Figure Legend S6:

Expression of NFATc1 was analysed in NFATc1 siRNA or control siRNA transfected macrophages by immunoblotting. The data shown are mean \pm S.D. of three independent experiments. n=3, ***p < 0.001; Student's t test.