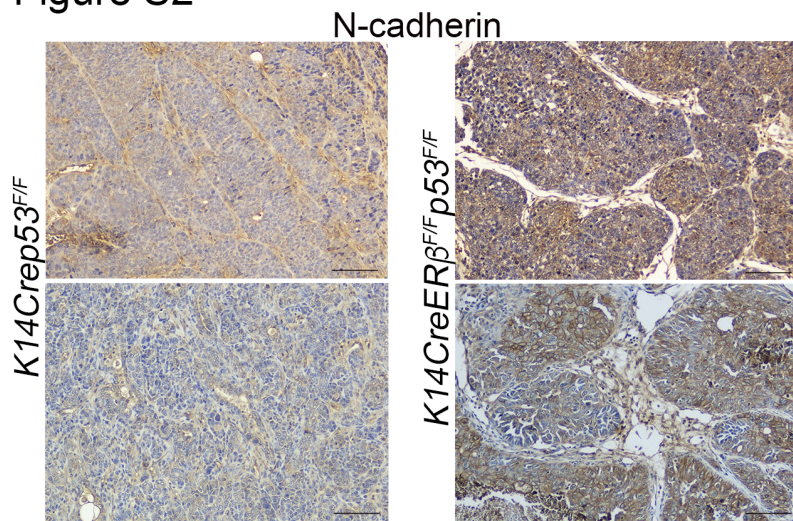


Figure S2



Supplementary Figure 2. Expression of N-cadherin in mammary tumors from *K14Cre p53^{F/F}* and *K14Cre ERβ^{F/F} p53^{F/F}* female mice. Representative tumor sections from *K14Cre p53^{F/F}* and *K14Cre ERβ^{F/F} p53^{F/F}* female mice were stained with an antibody against N-cadherin. Scale bars 100 μm.