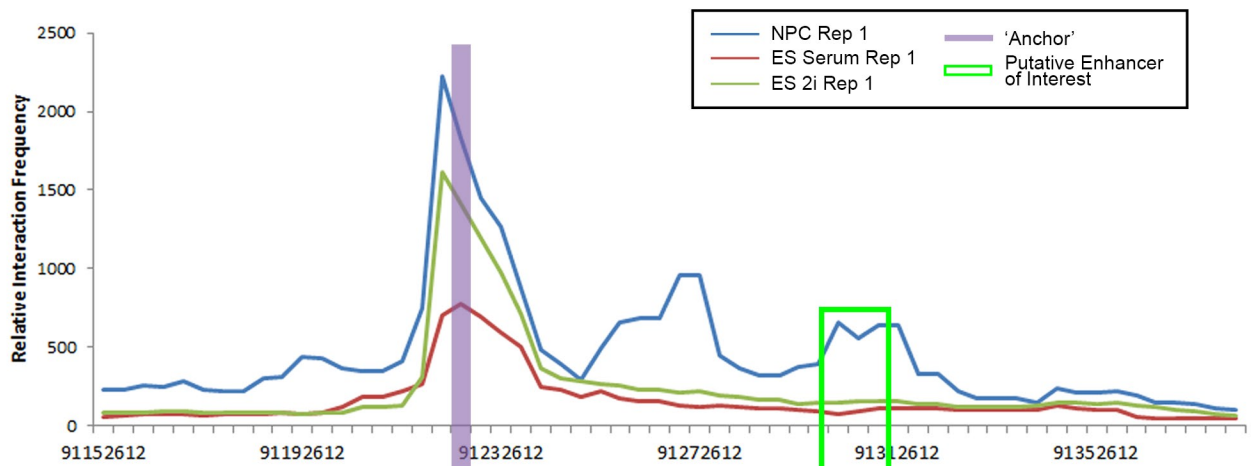
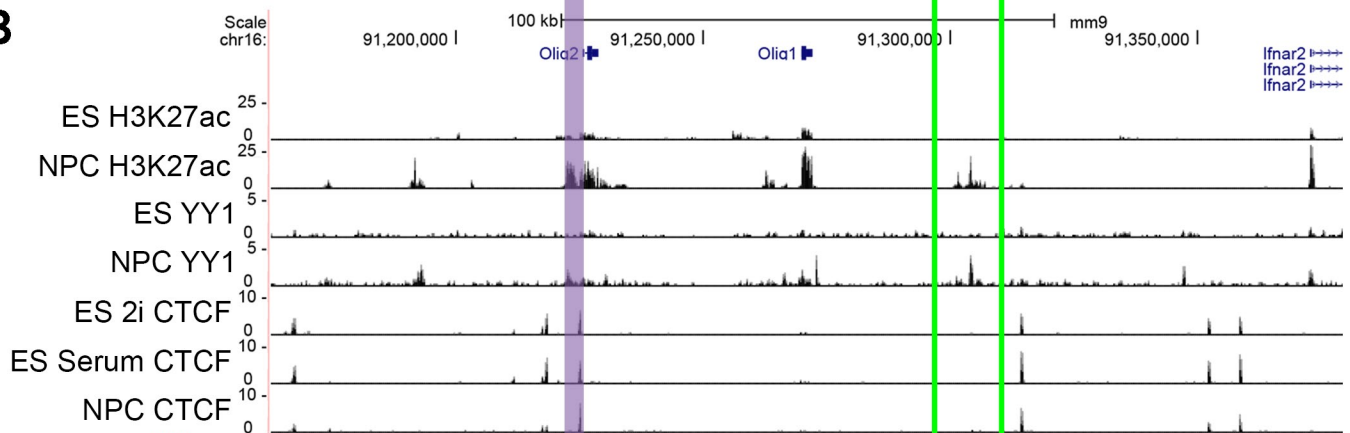
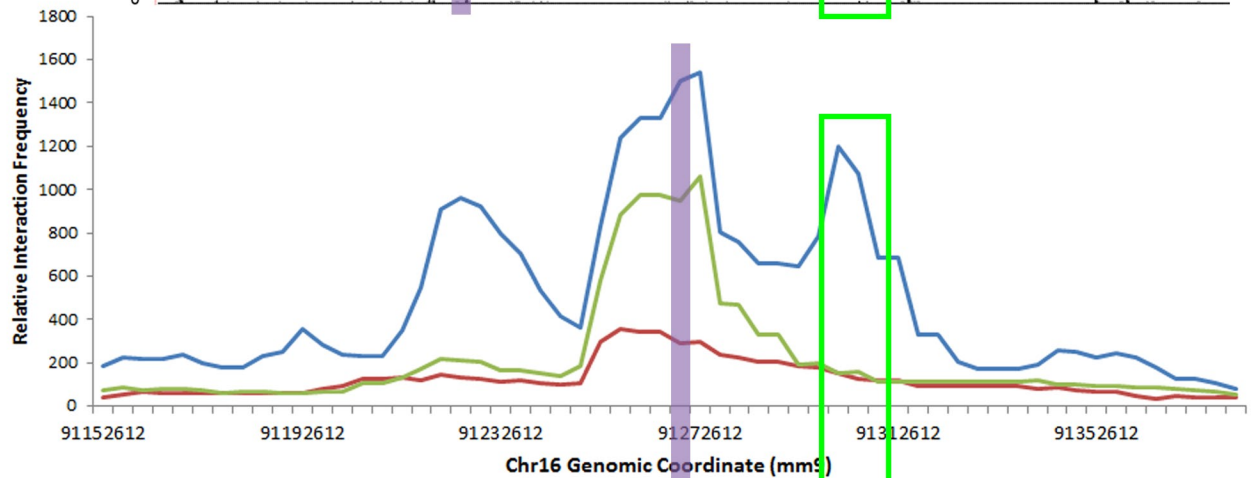
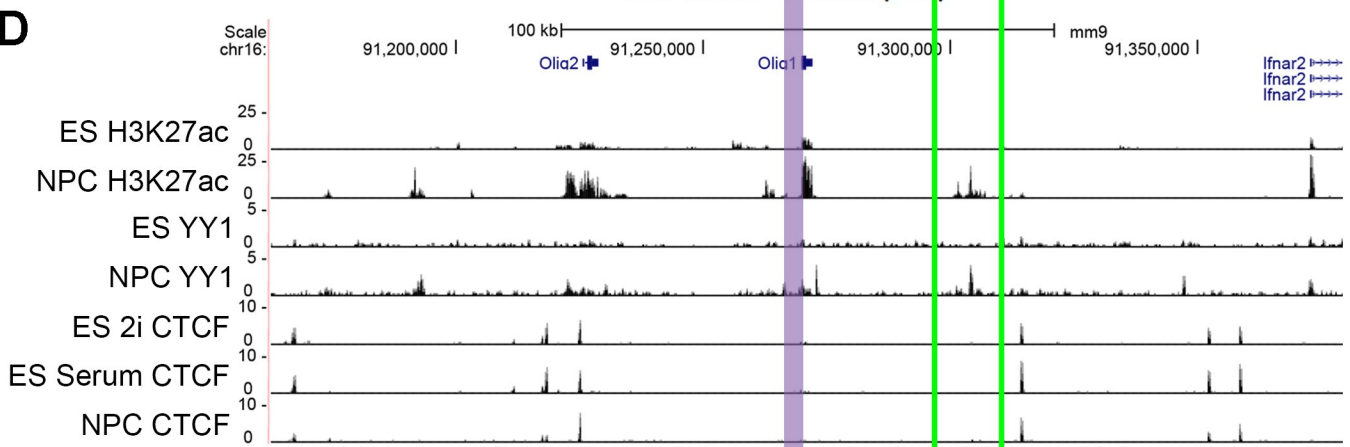


**A**

# Olig2-Olig1

**B****C****D**

**Supplemental Figure S13. Summary of crucial interactions made by the *Olig1/Olig2* genes. (A,C)** Relative interaction frequencies for the interactions between the 5C bin containing the *Olig2* gene (A) and *Olig1* gene (C) (highlighted in purple) and surrounding bins are plotted for the first ES 2i, ES Serum, and NPC replicates. Putative enhancer elements of interest are highlighted in green box(es). **(B,D)** UCSC genome browser tracks are displayed for the same loci as in (A,C), displaying the H3K27ac, YY1, and CTCF ChIP-seq data utilized in this study.