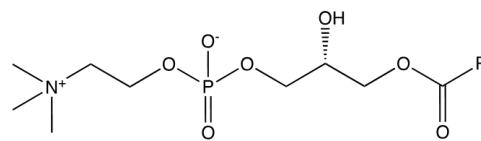
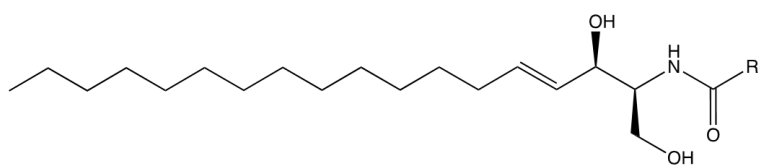


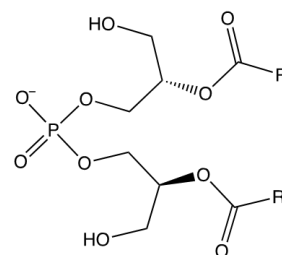
Cholesterol ester



Lysophosphatidylethanolamine

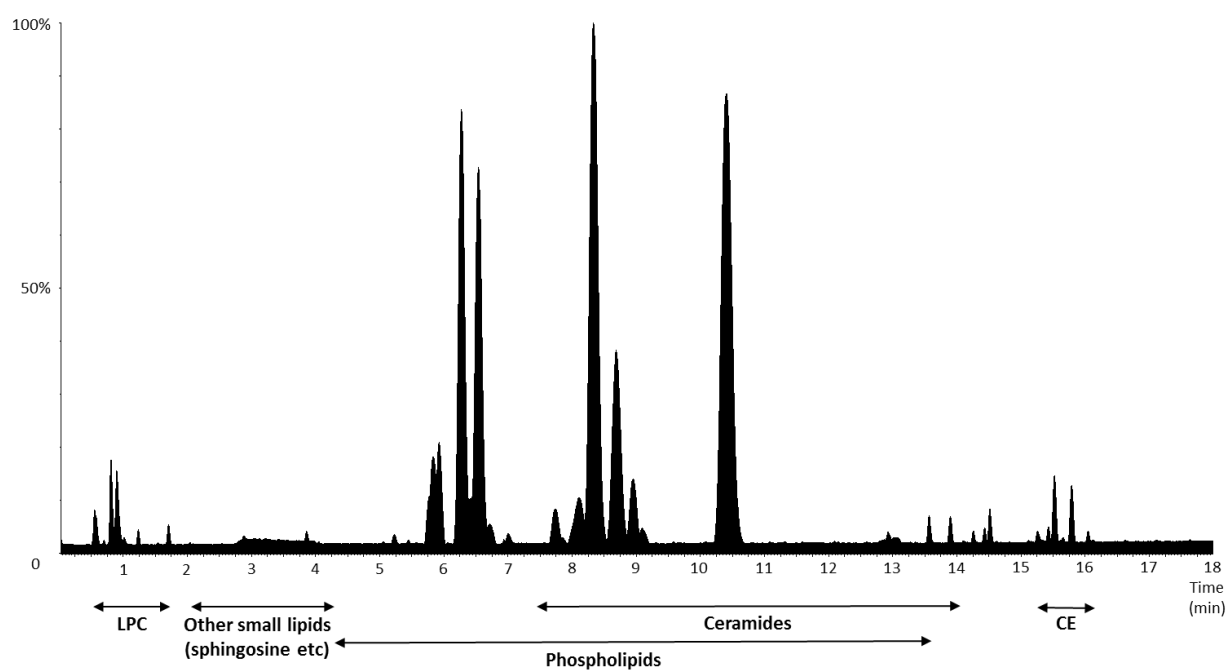


Ceramide

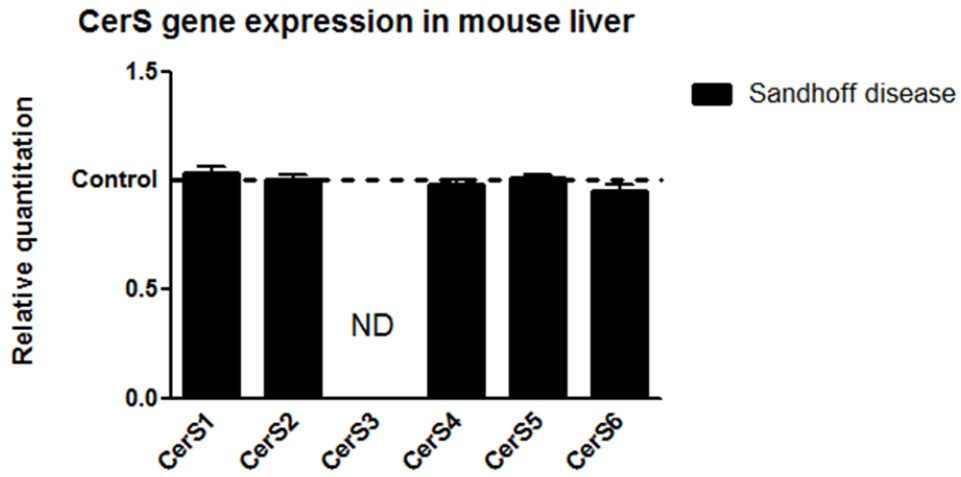


Bis(monoacylglycero)phosphate

Supplemental Figure S1: Chemical structures of the lipid classes measured in this paper. R represents the carbon chain whose length varies according to the lipid species.



Supplemental Figure S2: Base peak ion positive mode chromatogram of liver tissue from a chloroquine-treated rat. The total acquisition time is 18 min. The main lipid species detected are annotated under the chromatogram according to their retention times.



Supplemental Figure S3: Fold-change in CerS mRNA expression in the liver of SD mice compared to controls (set to 1 for each transcript) as measured by real-time quantitative PCR. Results are mean +/- SEM.