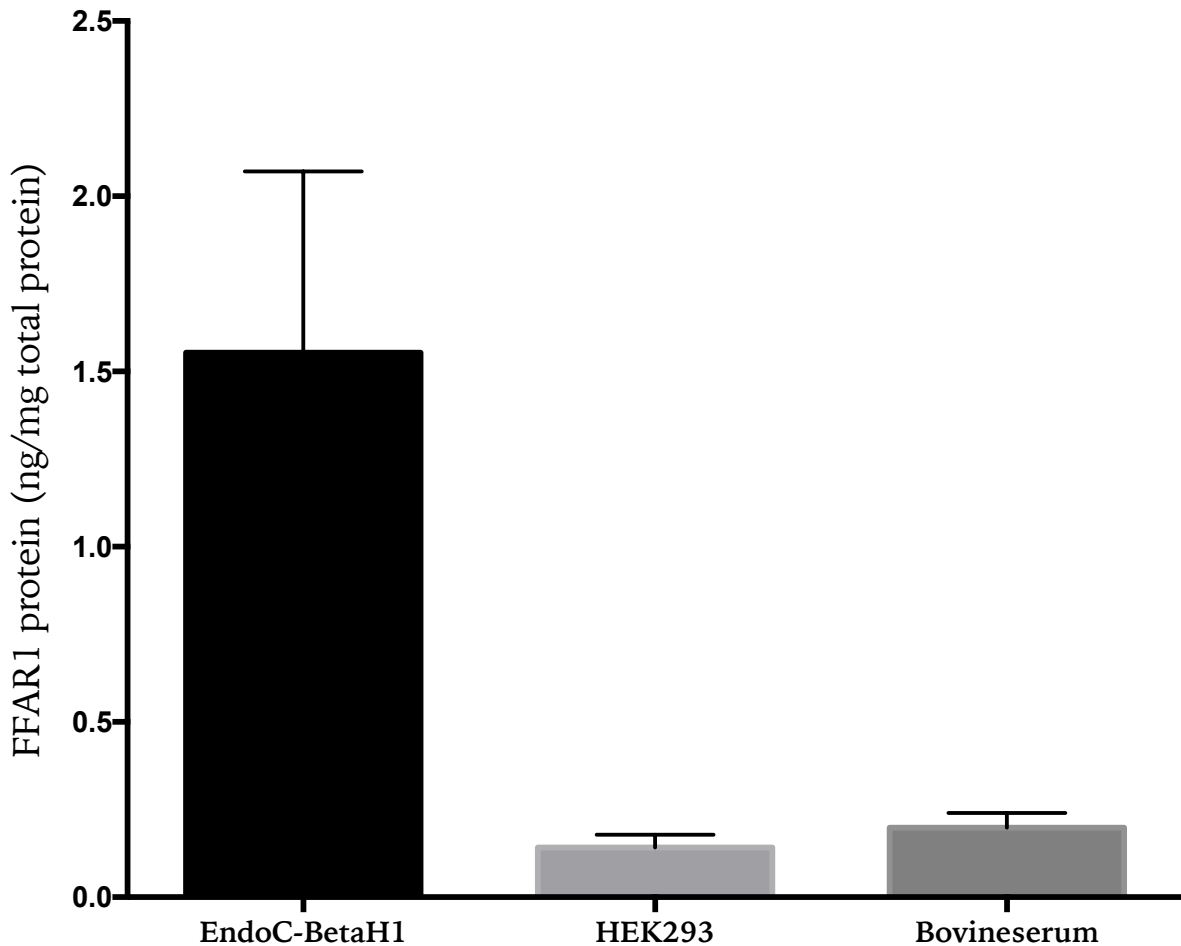


Basal hypersecretion of glucagon and insulin from palmitate-exposed human islets depends on FFAR1 but not decreased somatostatin secretion

¹Kristinsson H*, ¹Sargsyan E, ¹Manell H, ²Smith DM, ³Göpel SO and ¹Bergsten P



Supplementary Figure S1. Negative control for FFAR1 protein assay. FFAR1 protein reactivity from lysates of EndoC-betaH1 beta cells, HEK293 cells and from concentrated bovine serum.