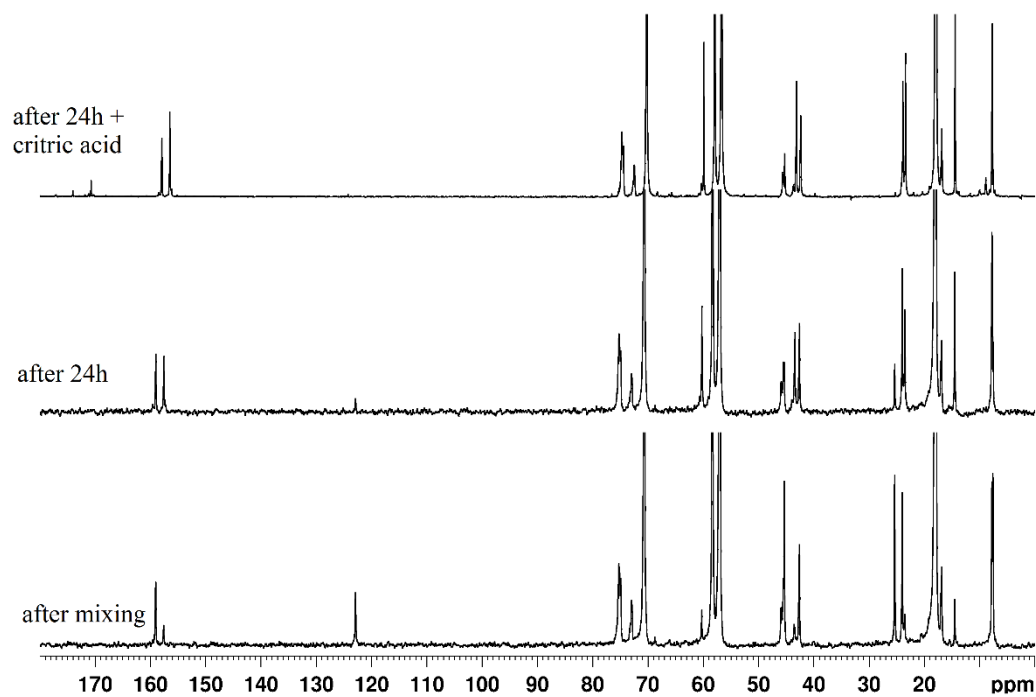
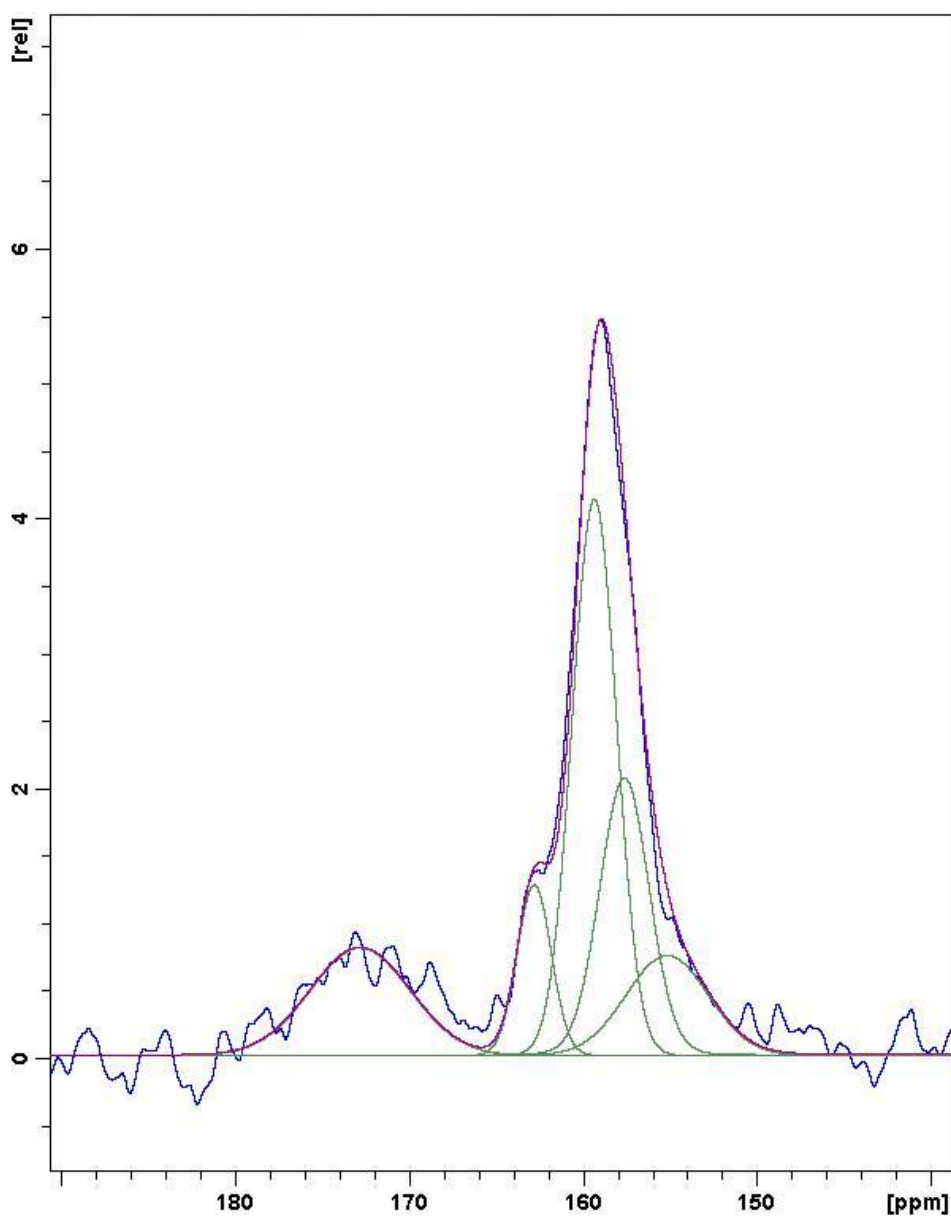


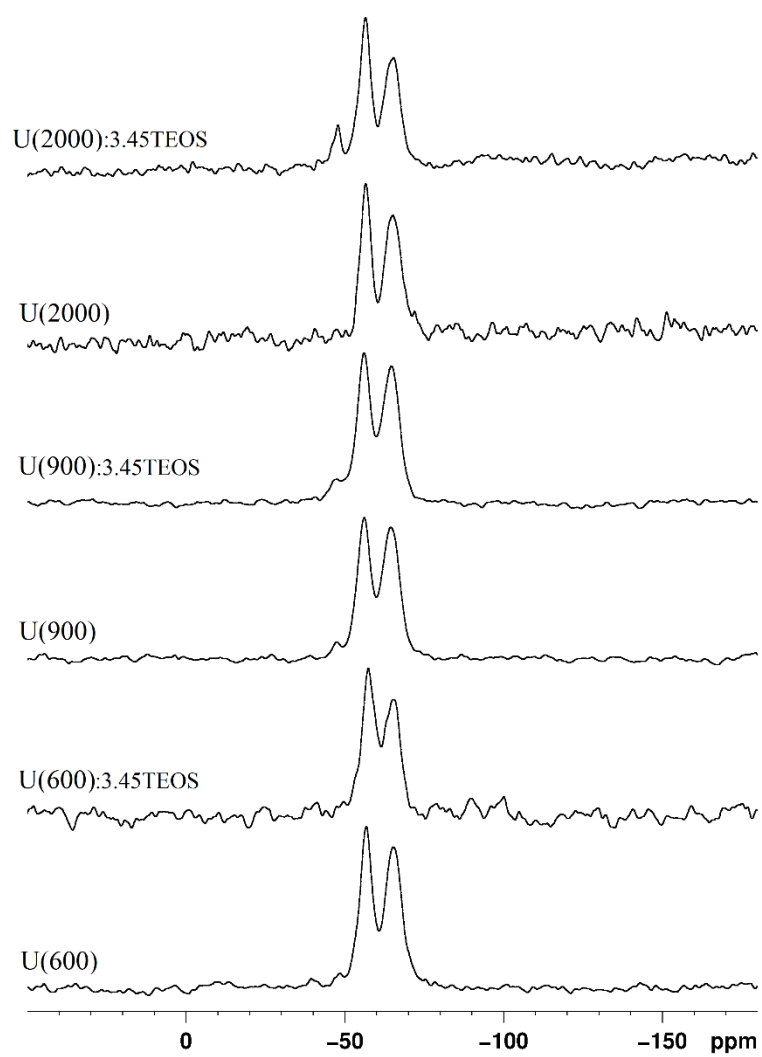
## Supplementary Material



**Figure S1.**  $^{13}\text{C}$  NMR of the mixture Jeffamine 600/ICPTES (1:4.16) in ethanol- $\text{d}_6$  immediately after mixing and after 24h and with subsequent addition of citric acid.



**Figure S2.** Lowfield part of the  $^{13}\text{C}$  CPMAS spectrum of U(900): 3.45TEOS.



**Figure S3.**  $^{29}\text{Si}$  CPMAS NMR spectra of OIH samples prepared with and without TEOS.