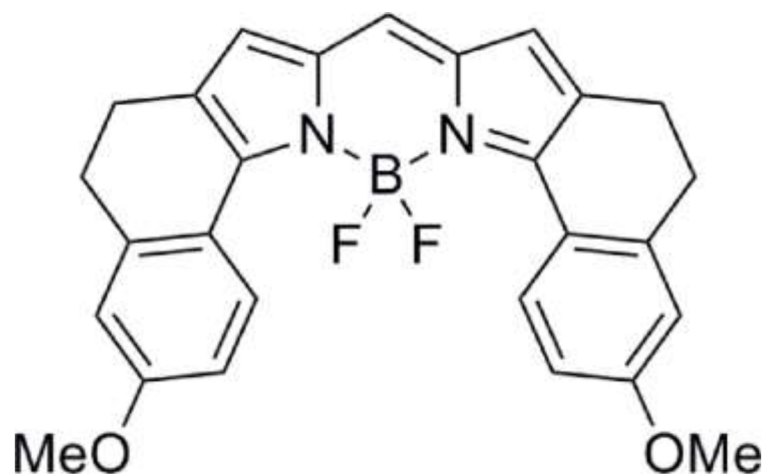
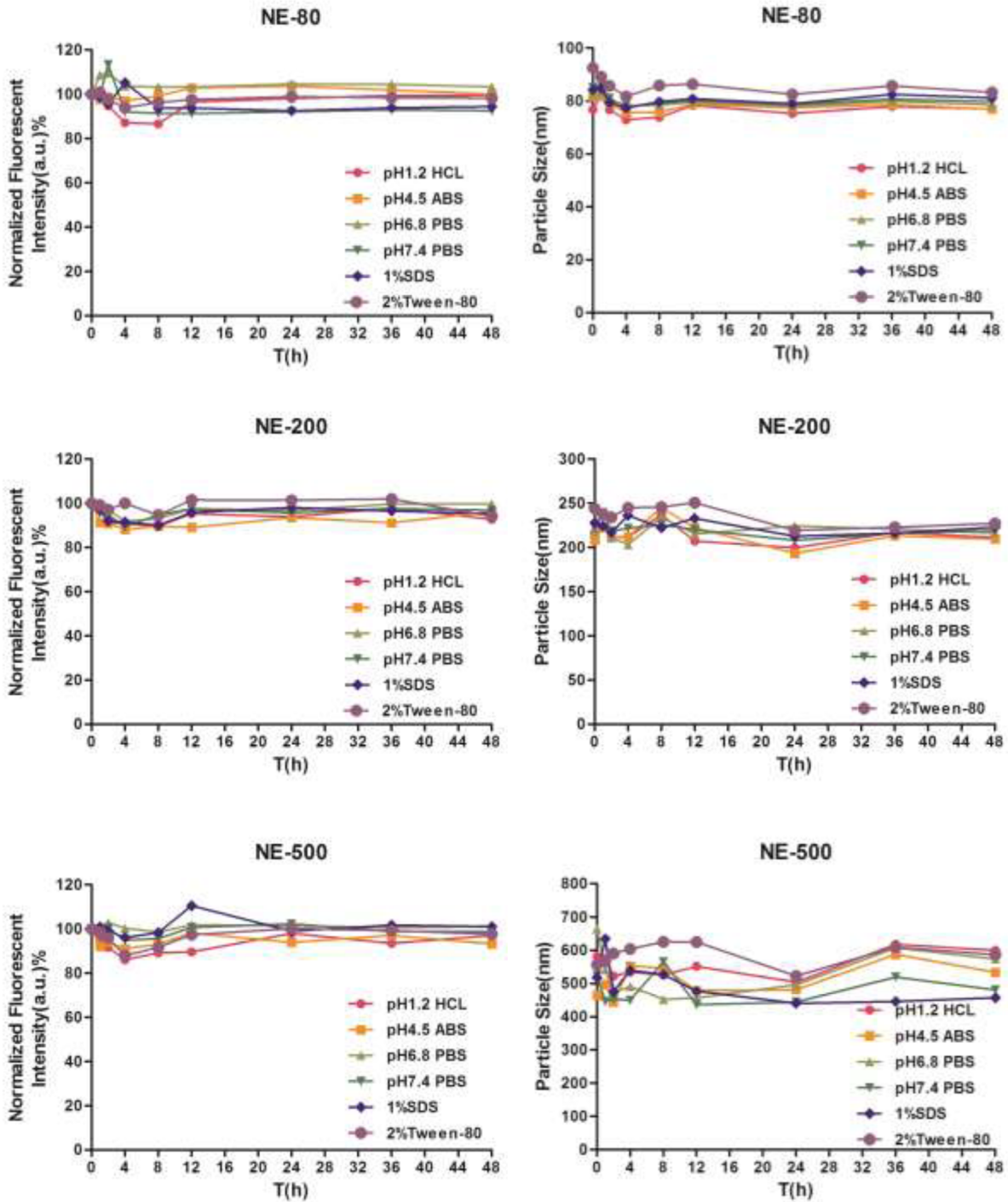


## Size-dependent penetration of nanoemulsions into epidermis and hair follicles: implications for transdermal delivery and immunization

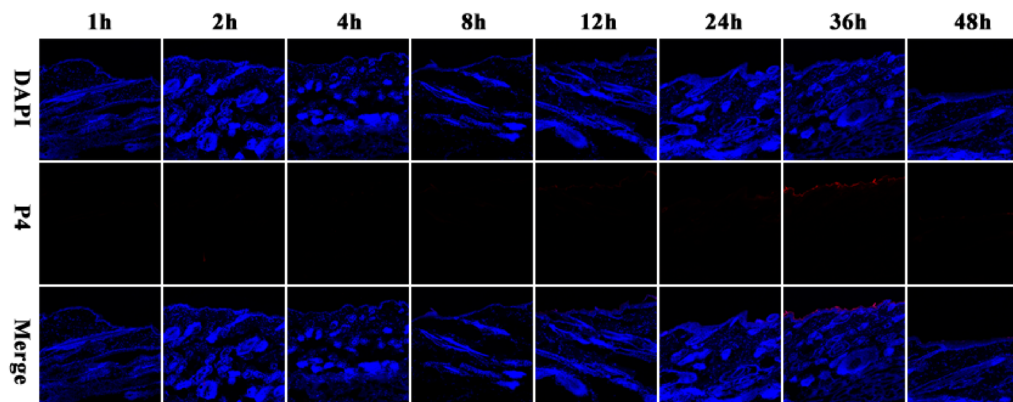
### Supplementary Material



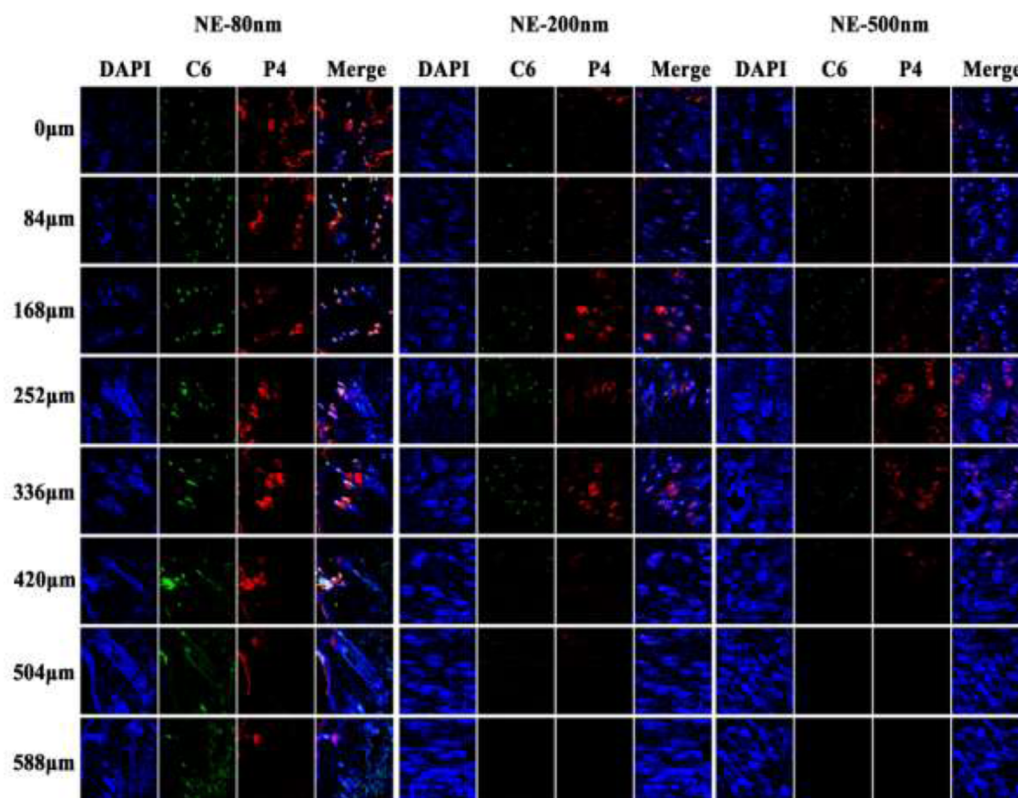
**Supplementary Figure 1: Molecular structure of P4.** (2Z)-7-methoxy-2-[(7-methoxy-4,5-dihydro-1H-benzo[g]indol-2-yl)methylene]-4,5-dihydrobenzo[g]indole boron difluoride.



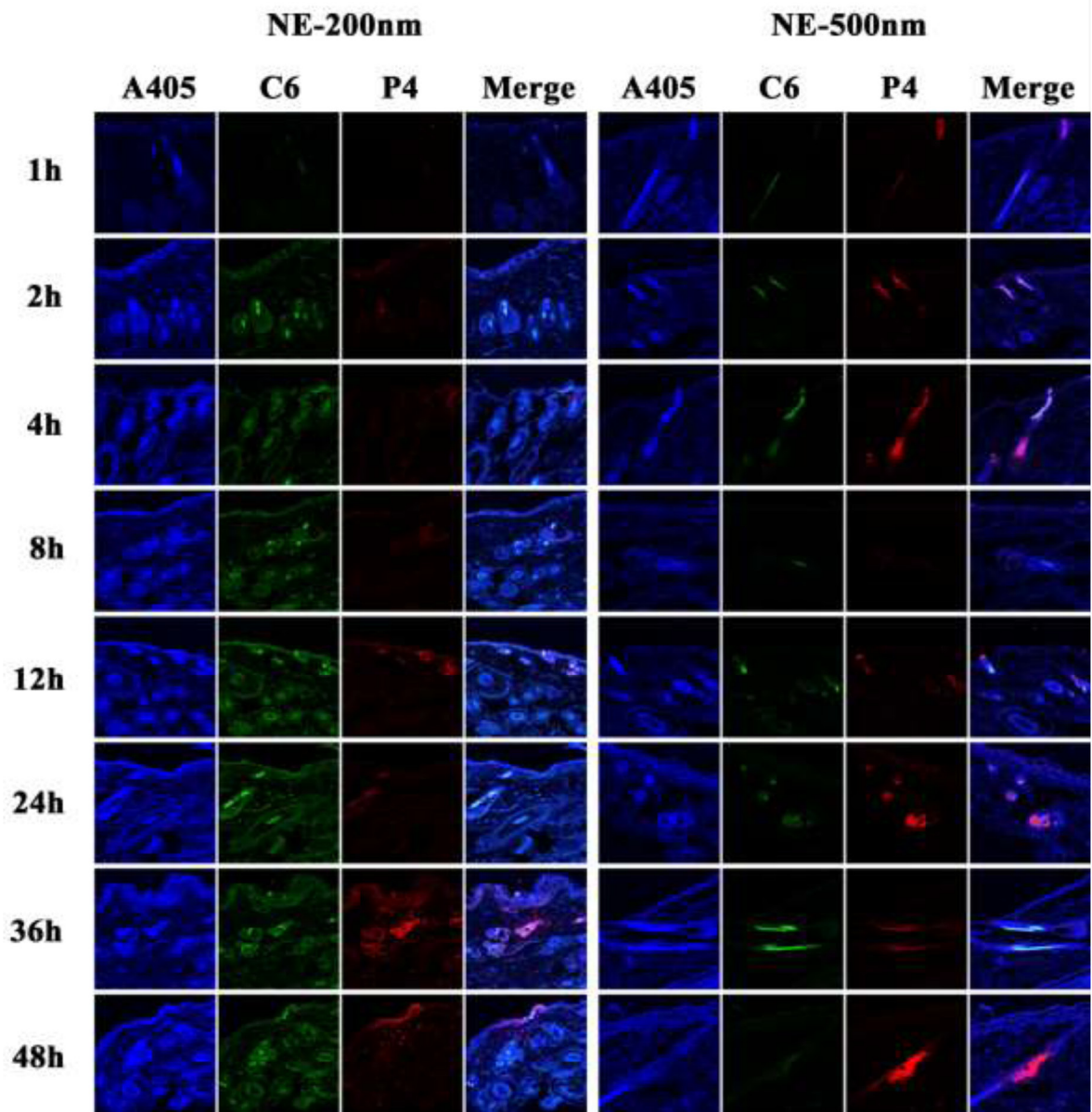
Supplementary Figure 2: Stability of nanoemulsions in different medium.



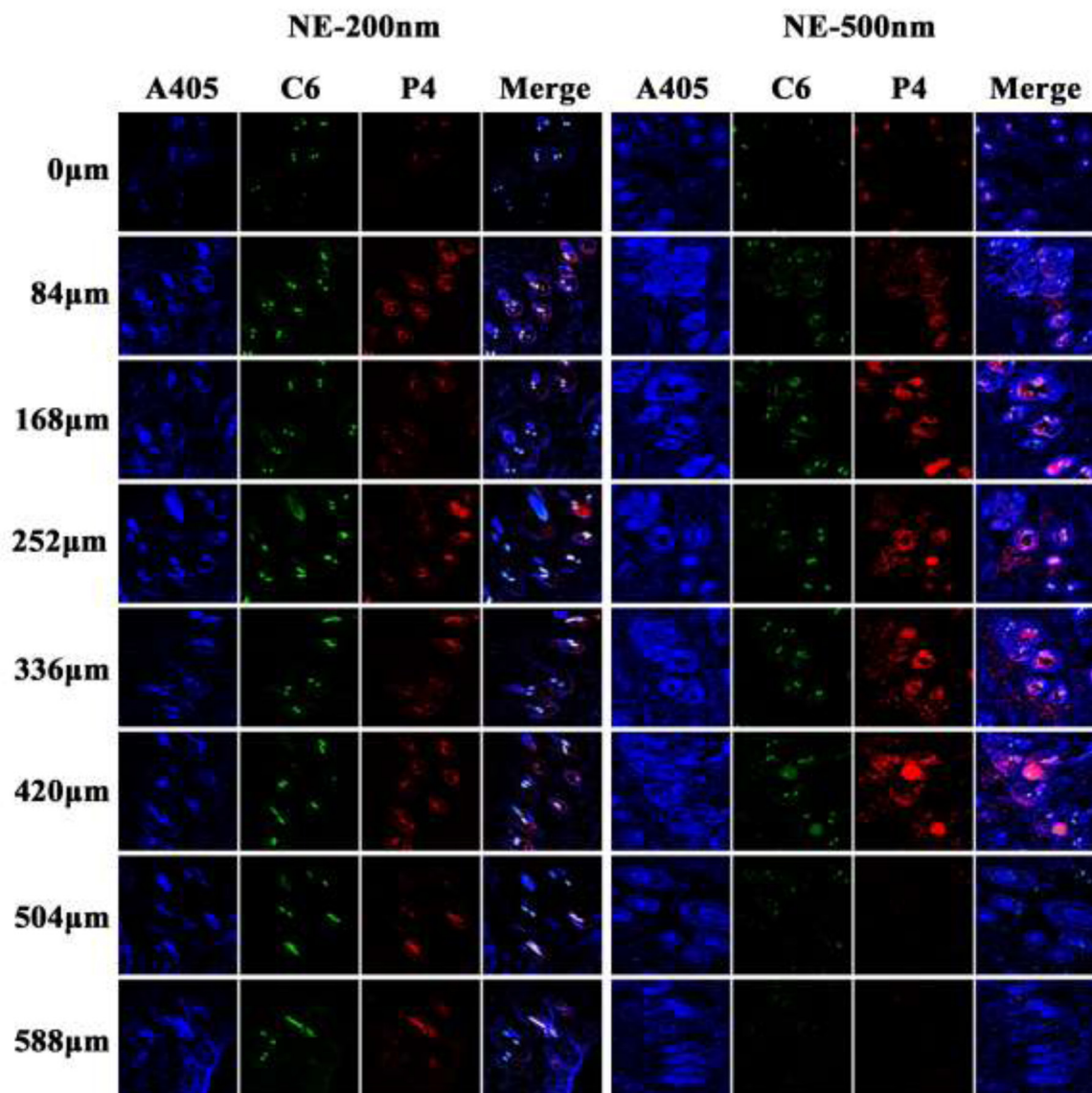
Supplementary Figure 3: CLSM images of vertical section of skin treated by P4 quenched solution post administration ( $\times 10$ ). The slides were stained with DAPI.



Supplementary Figure 4: CLSM images of horizontal section of skin treated by nanoemulsions 48 h post administration ( $\times 10$ ). The slides were stained with DAPI.



Supplementary Figure 5: CLSM images of vertical section of skin treated by NE-200 and NE-500 post administration ( $\times 20$ ). The slides were stained with immunofluorescence.



Supplementary Figure 6: CLSM images of horizontal section of skin treated by NE-200 and NE-500 24 h post administration ( $\times 20$ ). The slides were stained with immunofluorescence.