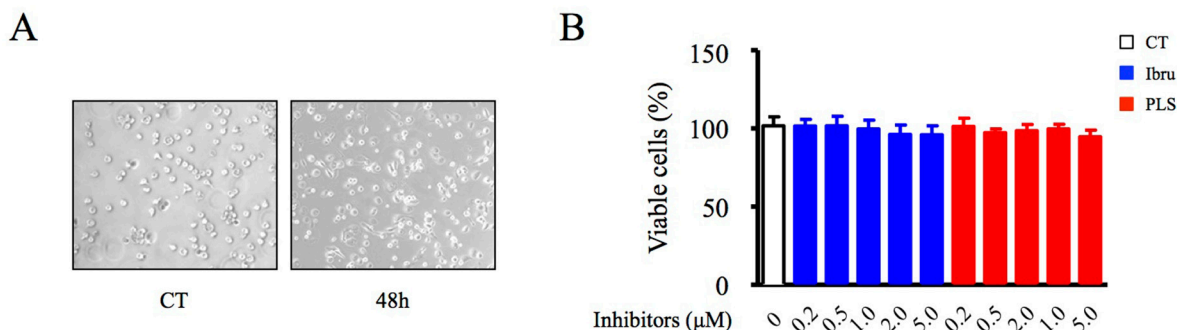


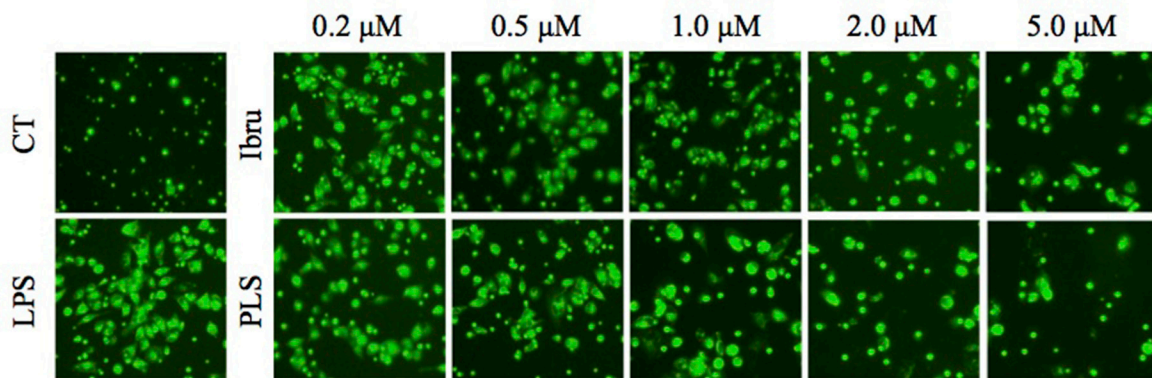
# The Bruton's tyrosine kinase inhibitor ibrutinib exerts immunomodulatory effects through regulation of tumor-infiltrating macrophages

## SUPPLEMENTARY MATERIALS

### SUPPLEMENTARY FIGURES



**Supplementary Figure 1: Cytotoxicity effect of Btk inhibitors in THP-1 differentiated macrophages.** (A) THP-1 cells were treated with PMA (50 ng/ml) for 48 hours to induce macrophage differentiation. (B) THP-1 differentiated macrophages were incubated with the indicated concentrations of ibrutinib, PLS-123 or vehicle for 18 hours. The cell viability was determined using the Cell Titer-Glo luminescent cell viability assay. Results are representative of three similar experiments.



**Supplementary Figure 2: Migration and invasion analysis of lymphoid malignant cells.** Namalwa cells suspended in serum free medium pre-labeled with calcein-AM were plated into transwell insert chambers, which were precoated with fibronectin or not. The supernatant from macrophages was added into the lower chamber as a chemoattractant. Twelve hours later, Namalwa cells in the lower chambers were visualized by an inverted fluorescence microscope. Results are representative of three similar experiments.