

Additional file 1

The recurrent campylobacteriosis epidemic over Christmas and New Year in European countries, 2006–2014

BMC Research Notes

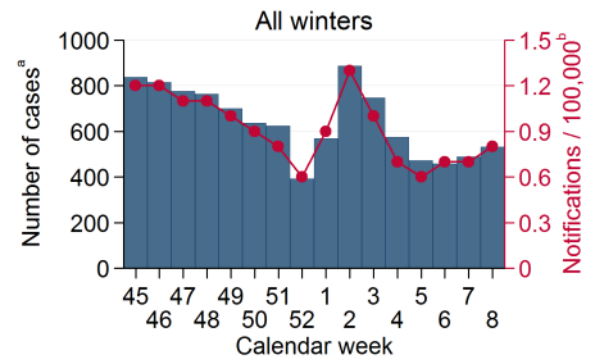
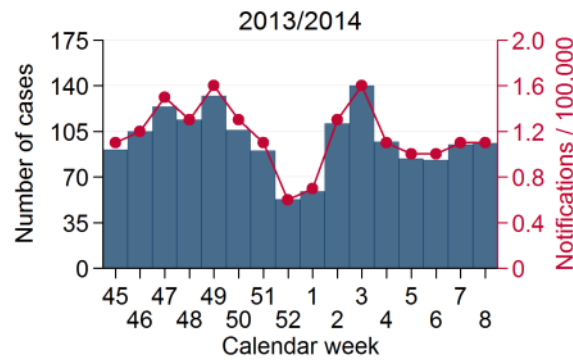
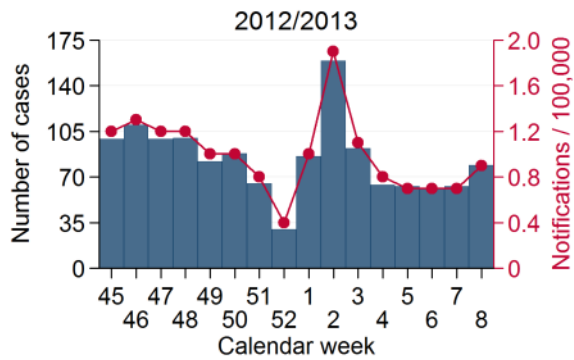
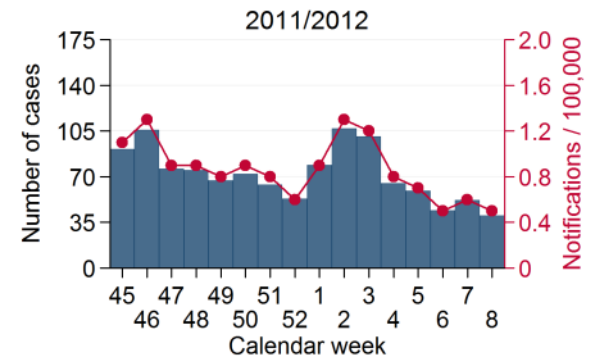
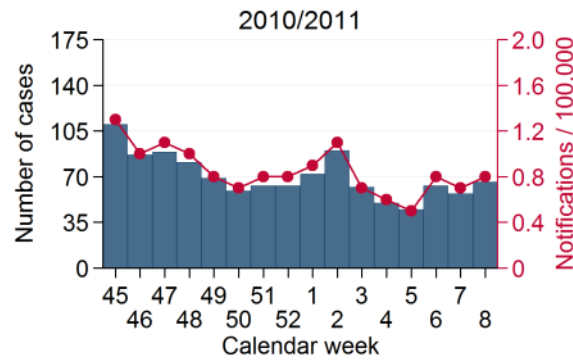
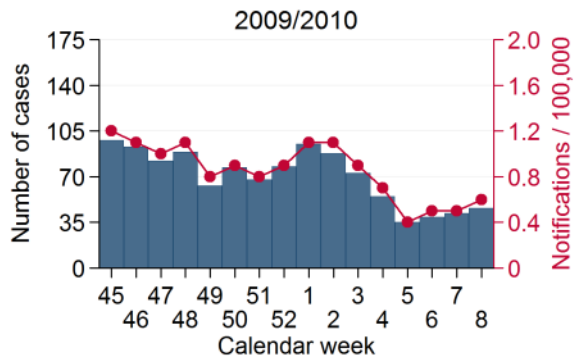
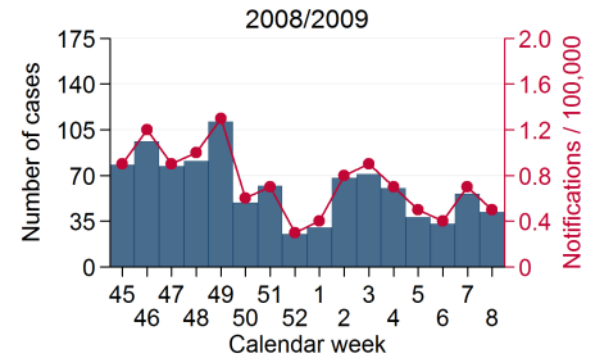
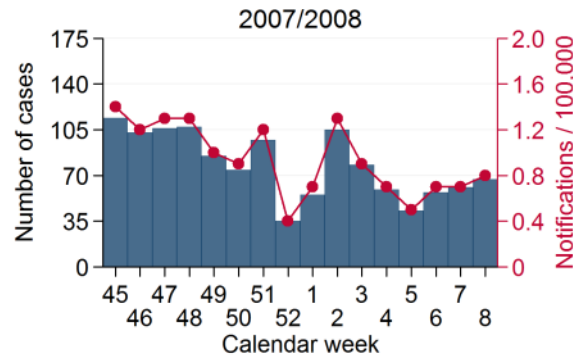
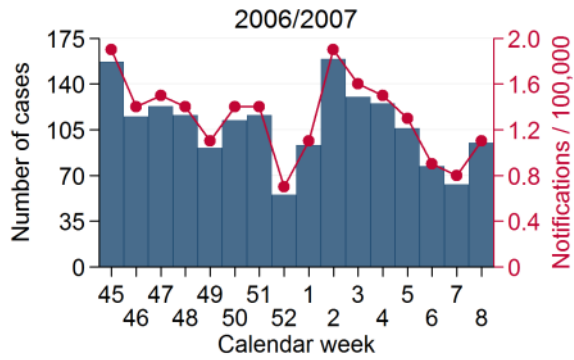
Philipp Justus Bless^{1,2}, Claudia Schmutz^{1,2}, Daniel Mäusezahl^{1,2*}

¹Swiss Tropical and Public Health Institute, Socinstrasse 57, P. O. Box, 4002 Basel, Switzerland

²University of Basel, Petersplatz 1, P. O. Box, 4001 Basel, Switzerland

*corresponding author (daniel.maeusezahl@unibas.ch)

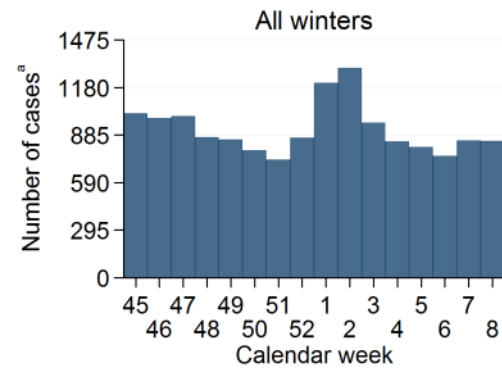
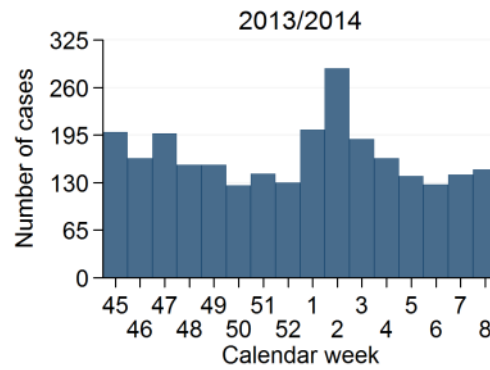
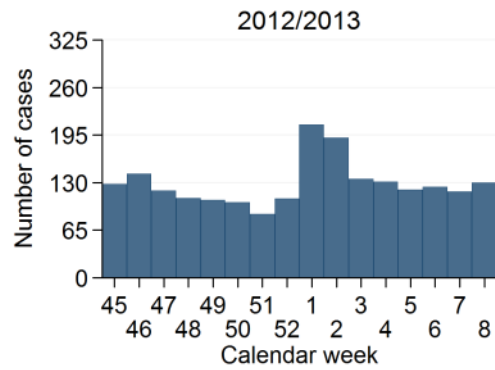
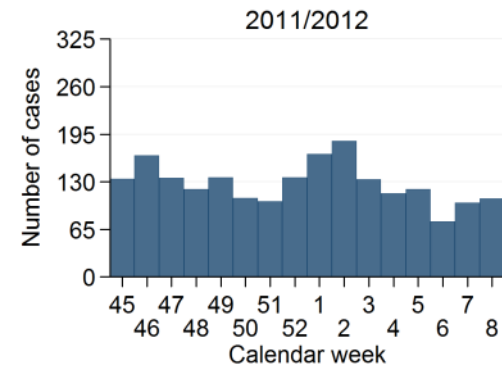
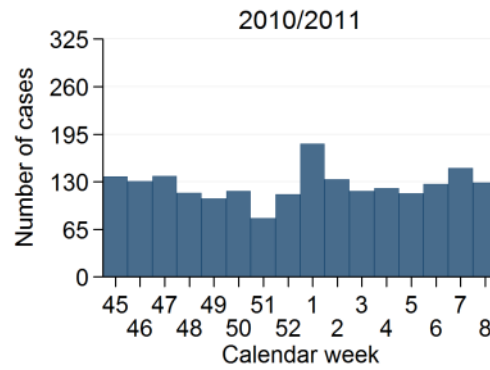
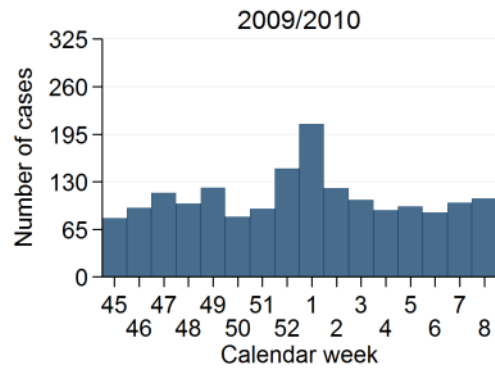
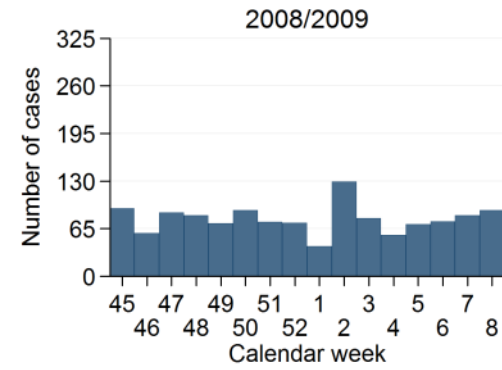
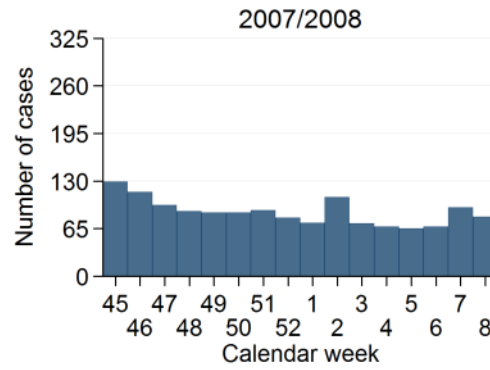
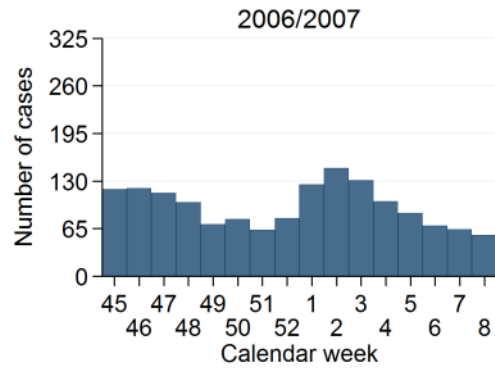
Austria



^aSum of weekly notifications from winter seasons 2006/2007 to 2013/2014

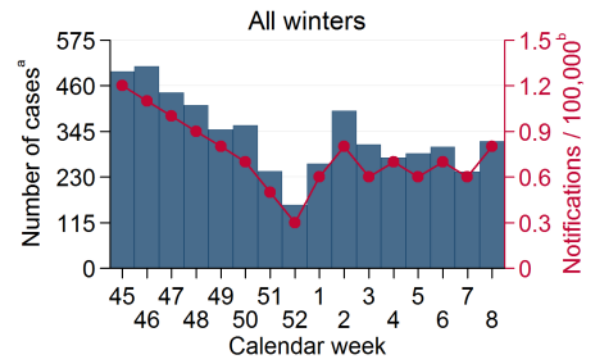
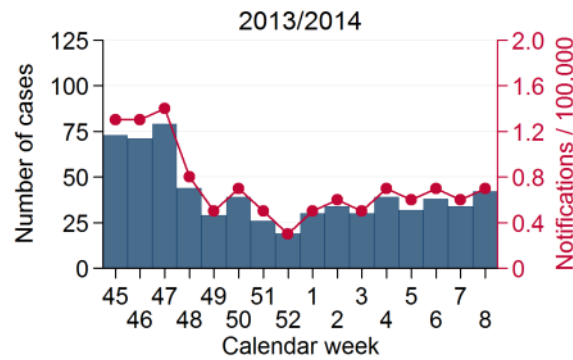
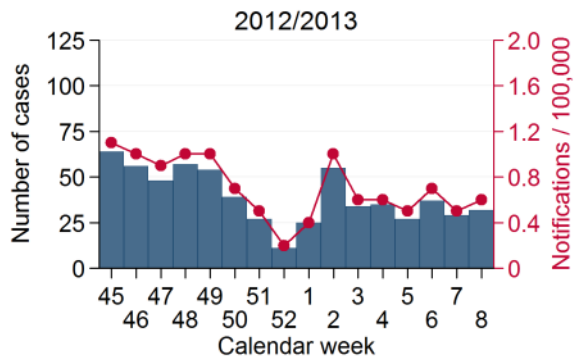
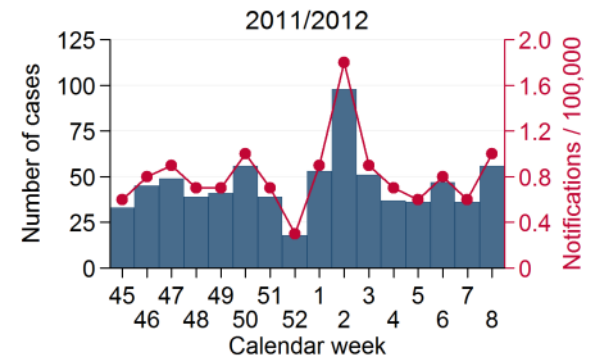
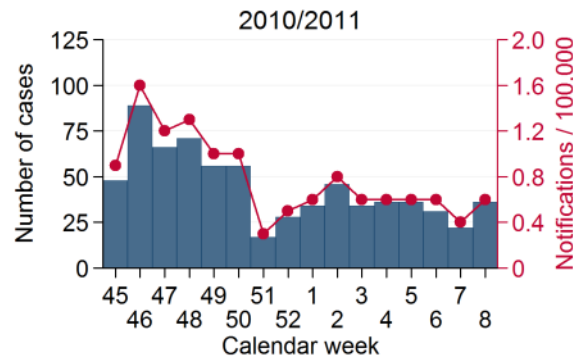
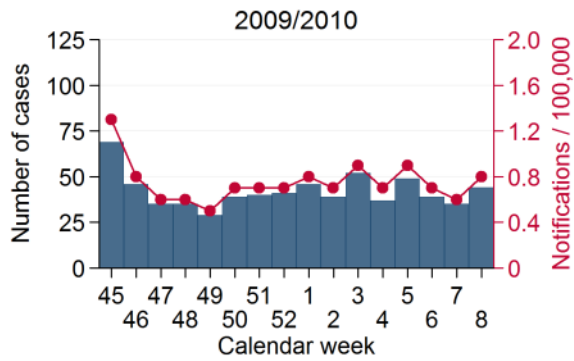
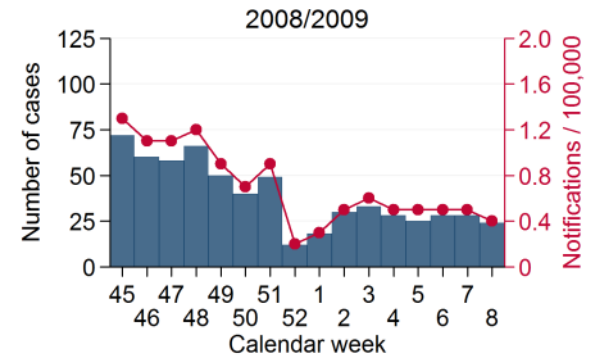
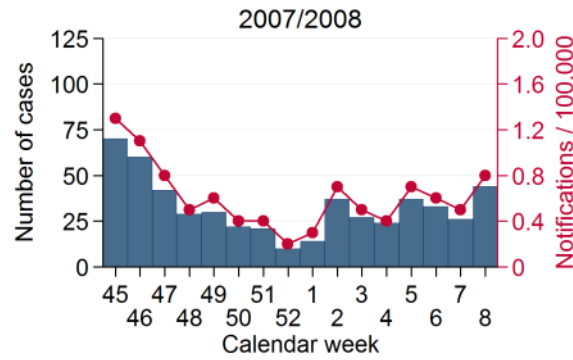
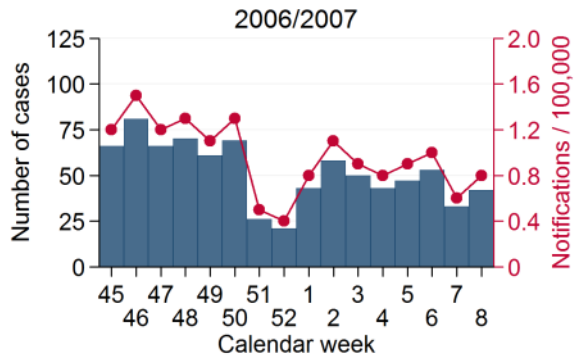
^bWeekly notifications per 100,000 population = median of weekly notification rates from winter seasons 2006/2007 to 2013/2014

Belgium



^aSum of weekly notifications from winter seasons 2006/2007 to 2013/2014

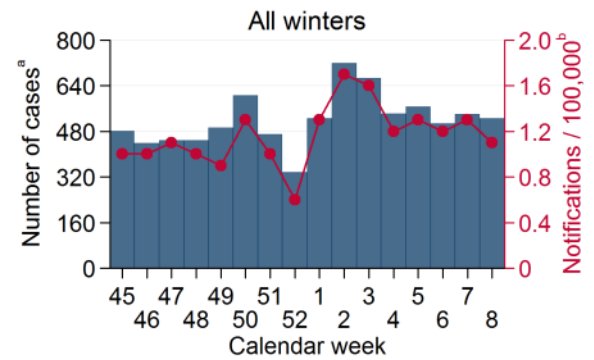
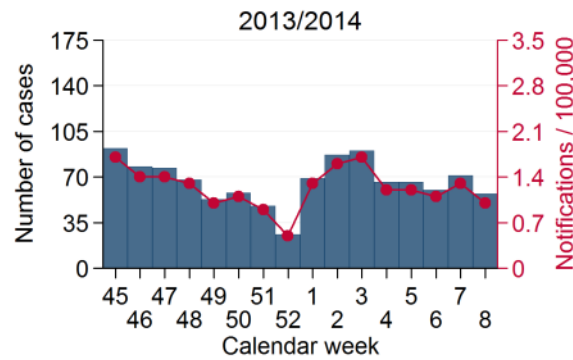
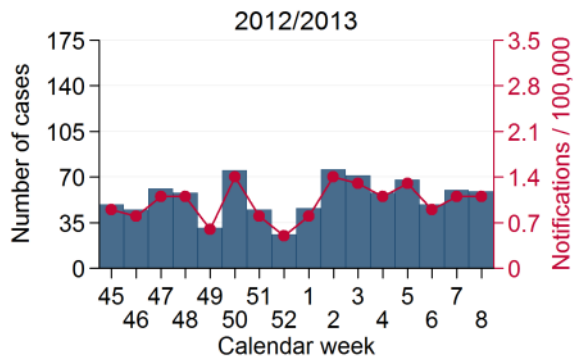
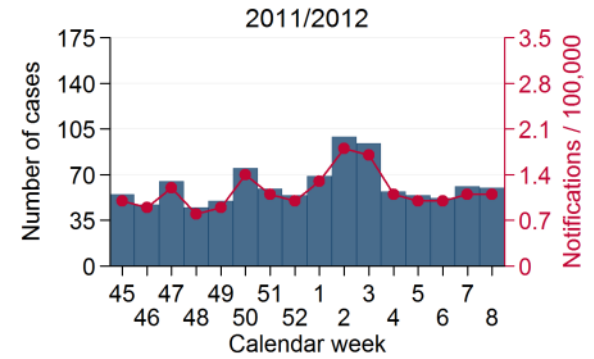
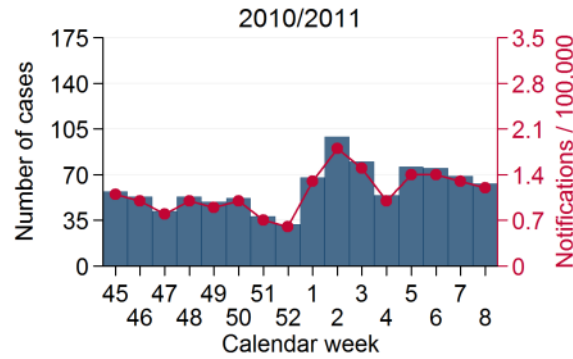
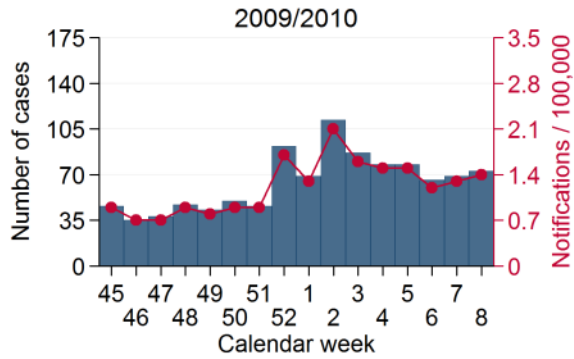
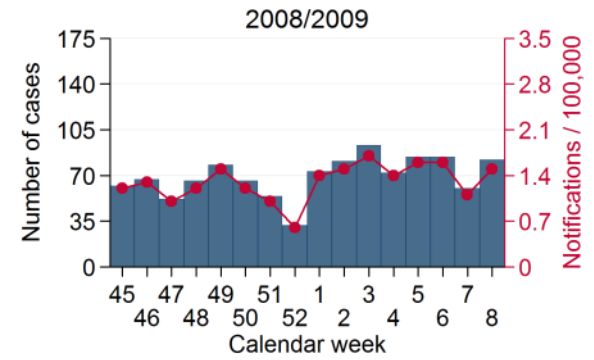
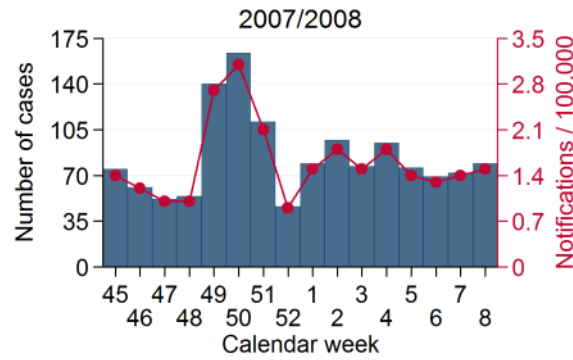
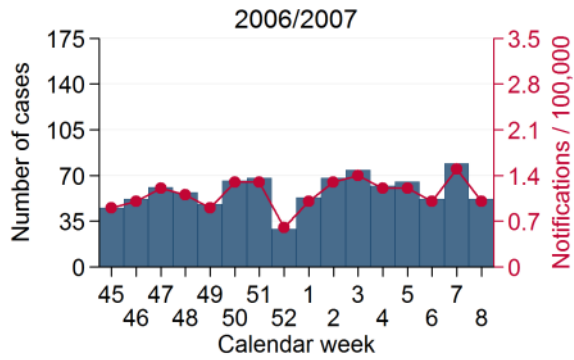
Denmark



^a Sum of weekly notifications from winter seasons 2006/2007 to 2013/2014

^b Weekly notifications per 100,000 population = median of weekly notification rates from winter seasons 2006/2007 to 2013/2014

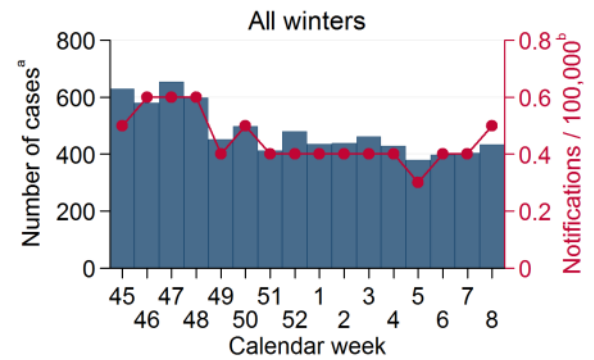
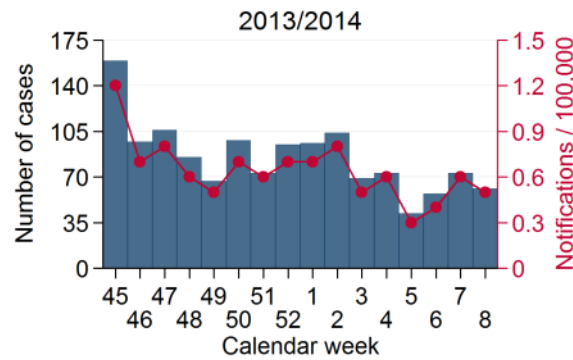
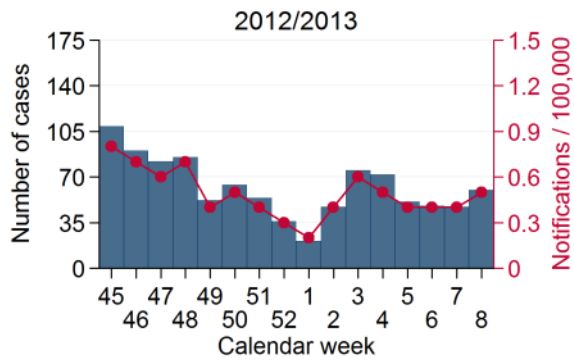
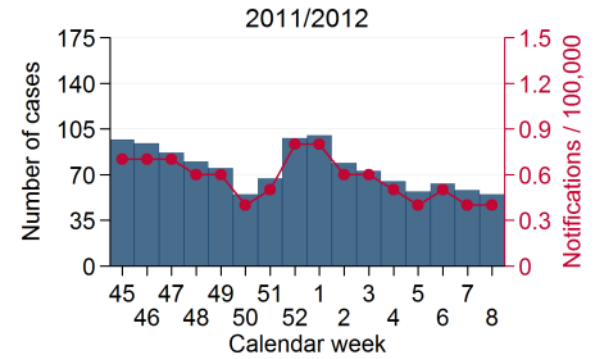
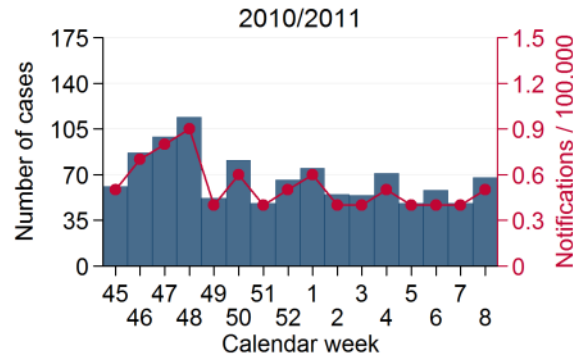
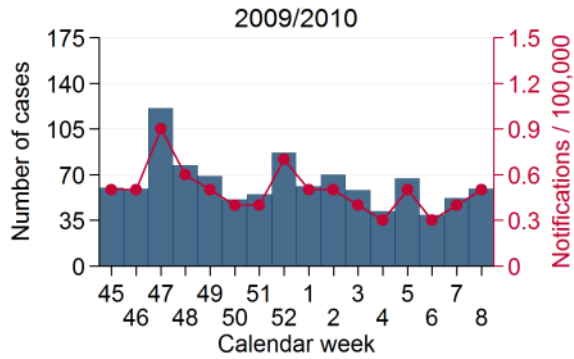
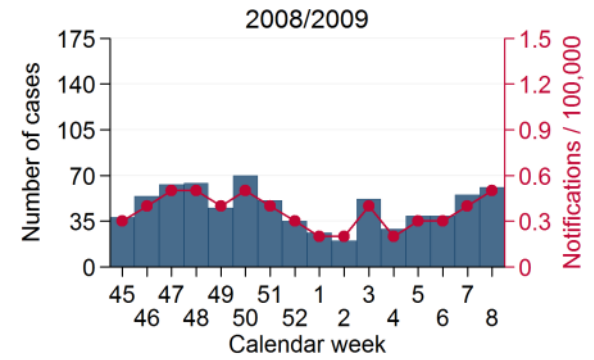
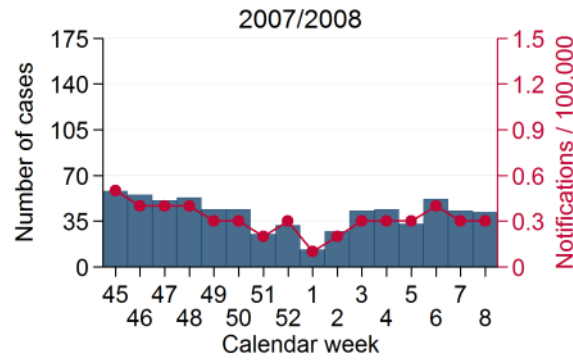
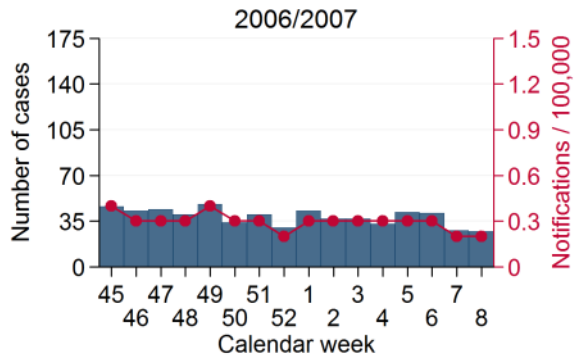
Finland



^a Sum of weekly notifications from winter seasons 2006/2007 to 2013/2014

^b Weekly notifications per 100,000 population = median of weekly notification rates from winter seasons 2006/2007 to 2013/2014

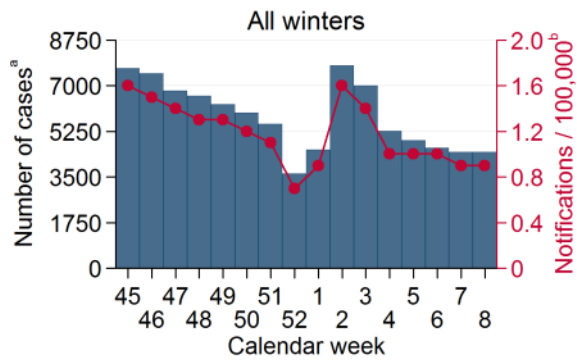
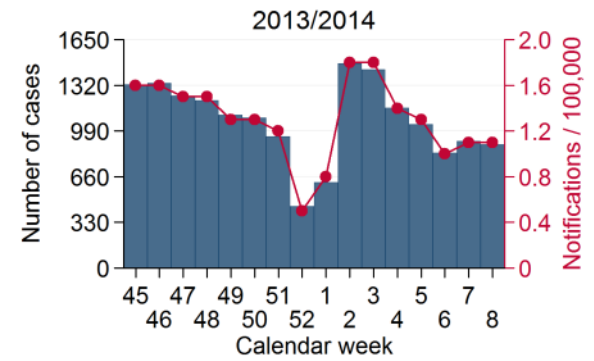
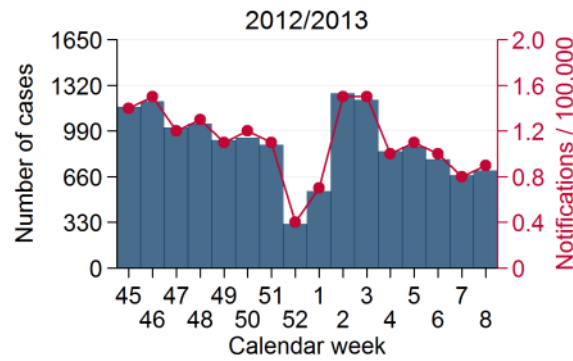
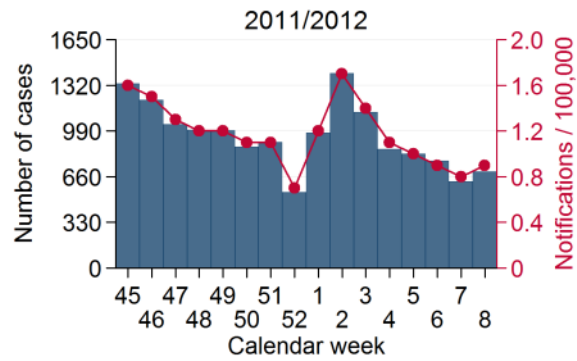
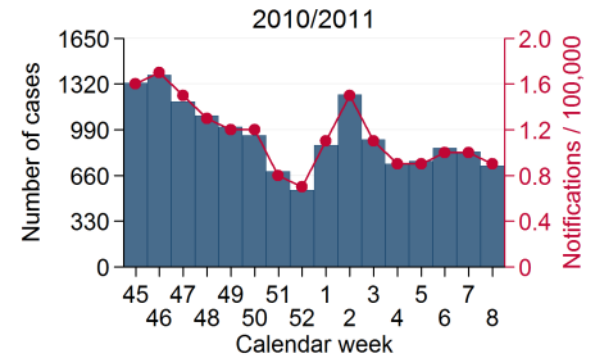
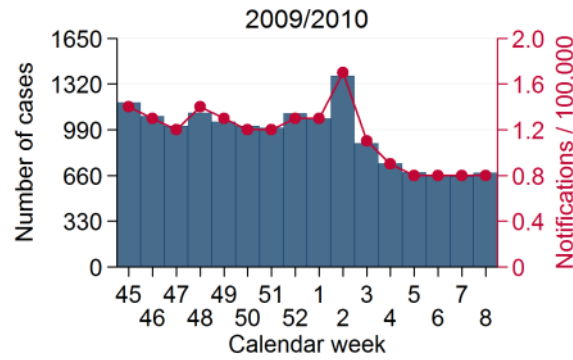
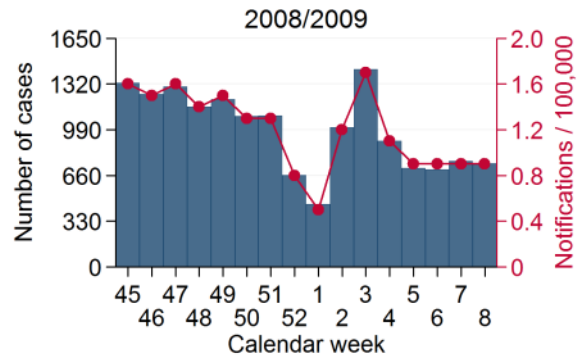
France



^a Sum of weekly notifications from winter seasons 2006/2007 to 2013/2014

^b Weekly notifications per 100,000 population = median of weekly notification rates from winter seasons 2006/2007 to 2013/2014

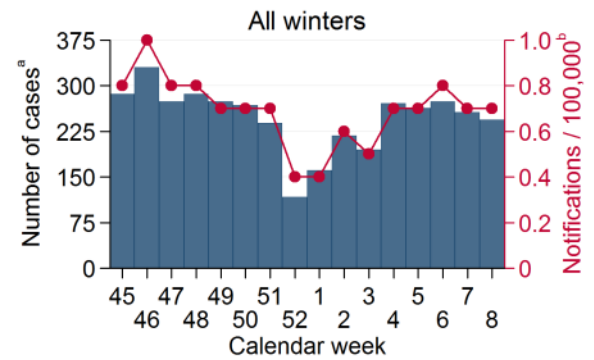
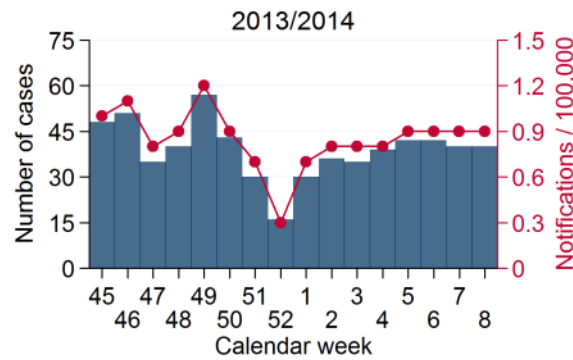
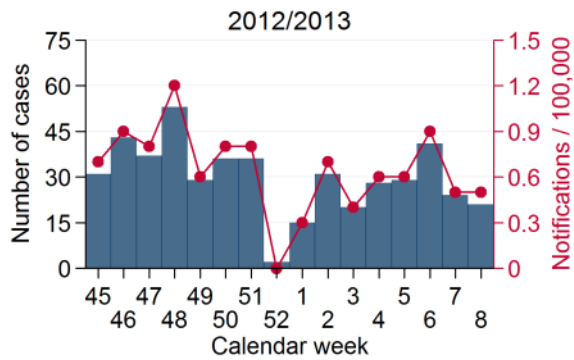
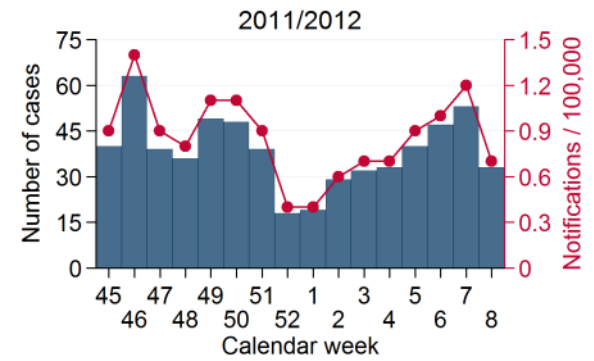
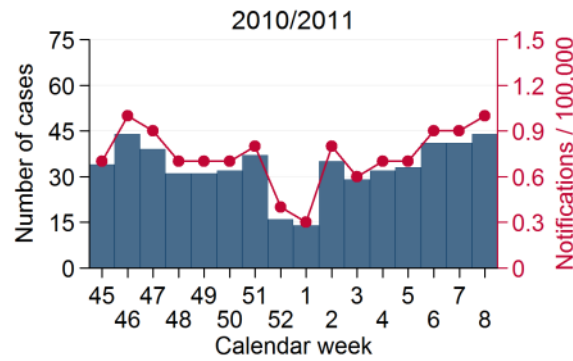
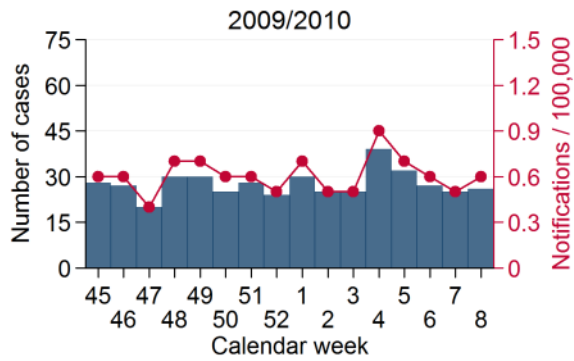
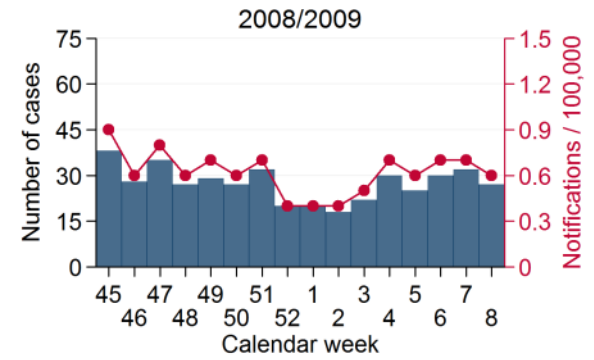
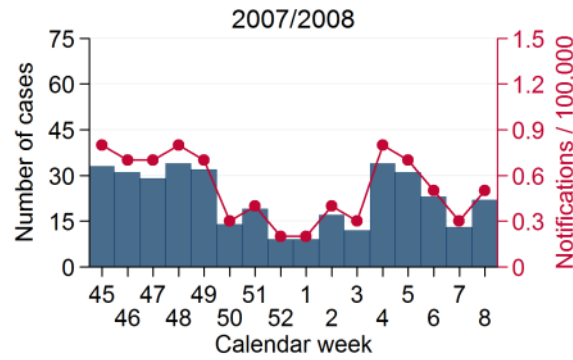
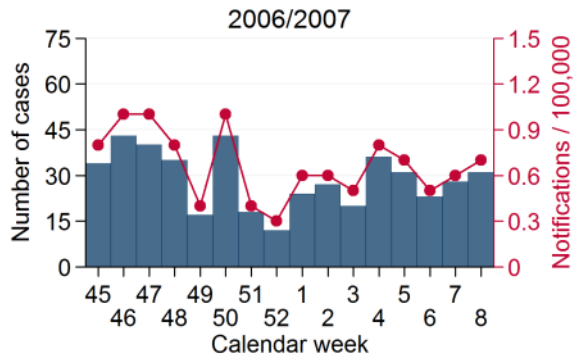
Germany



^a Sum of weekly notifications from winter seasons 2008/2009 to 2013/2014

^b Weekly notifications per 100,000 population = median of weekly notification rates from winter seasons 2008/2009 to 2013/2014

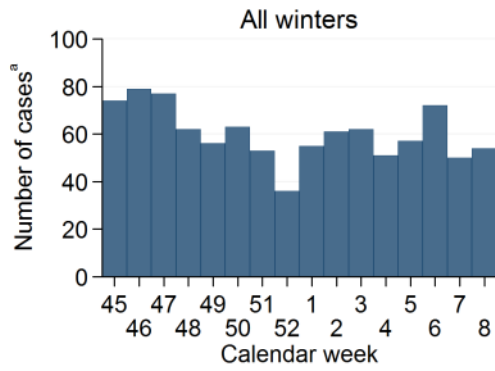
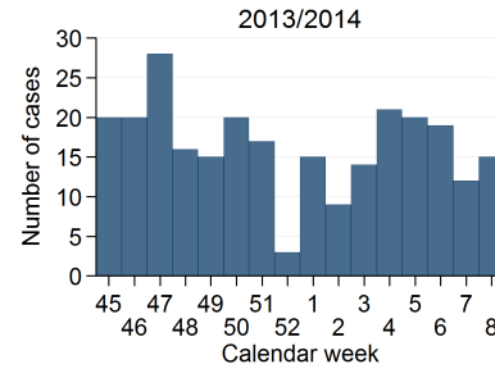
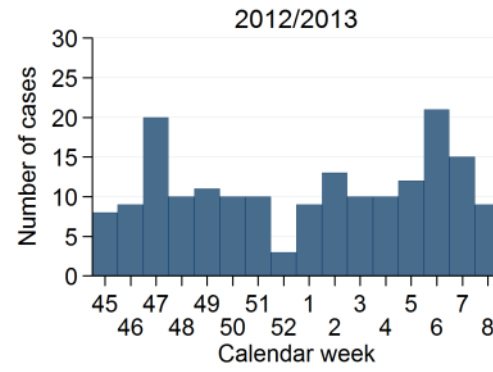
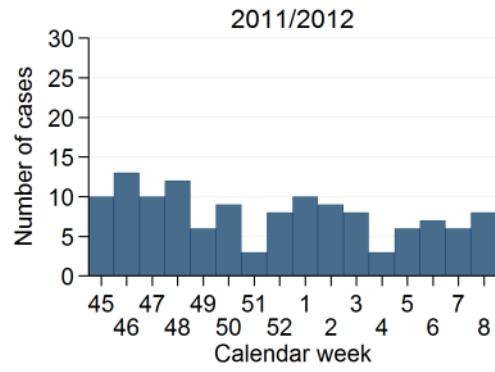
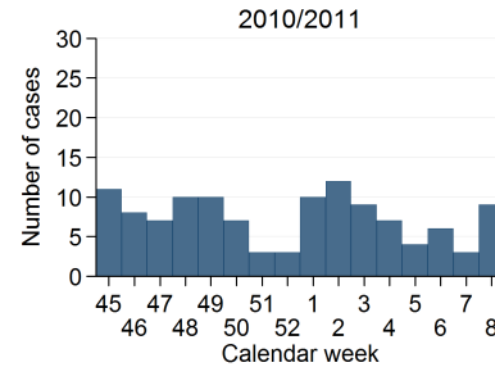
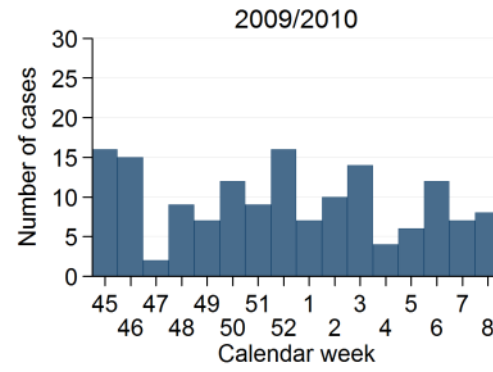
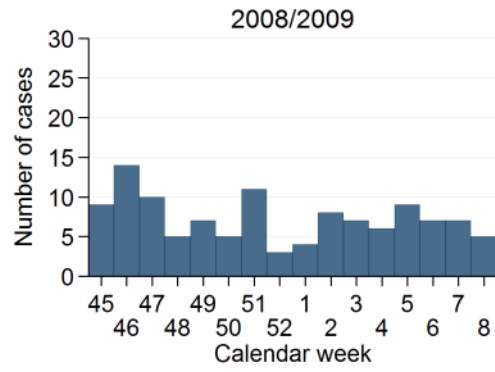
Ireland



^aSum of weekly notifications from winter seasons 2006/2007 to 2013/2014

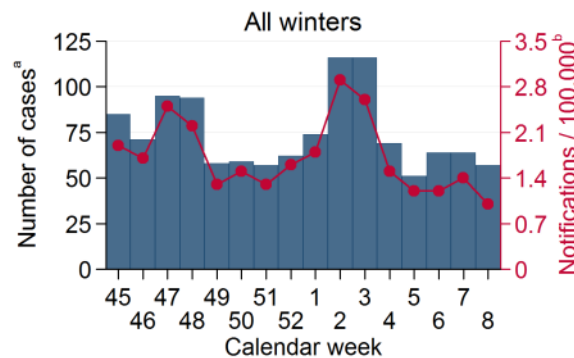
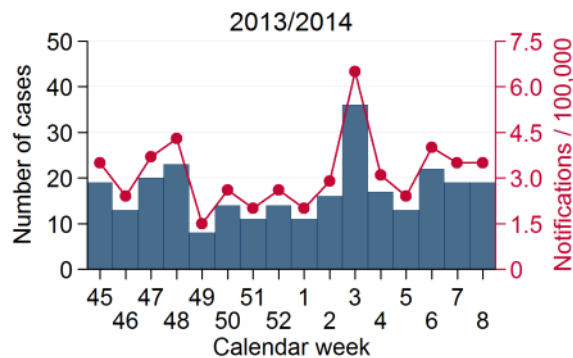
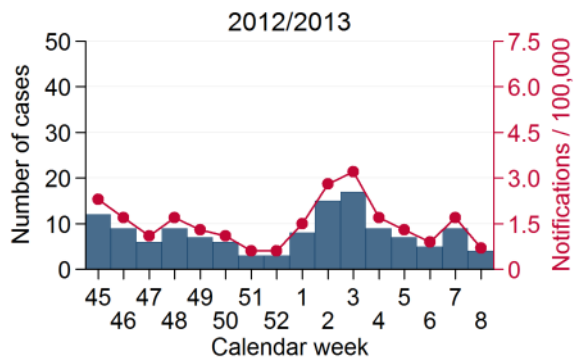
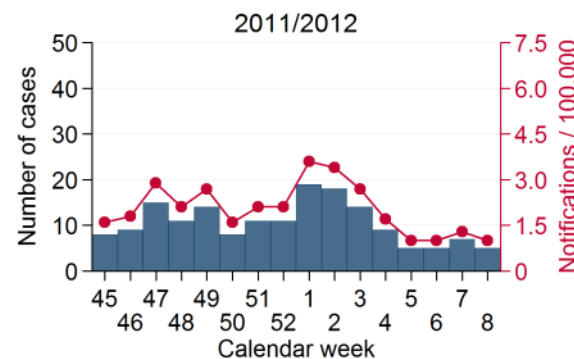
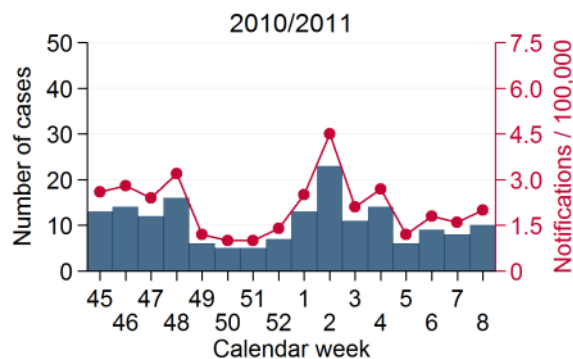
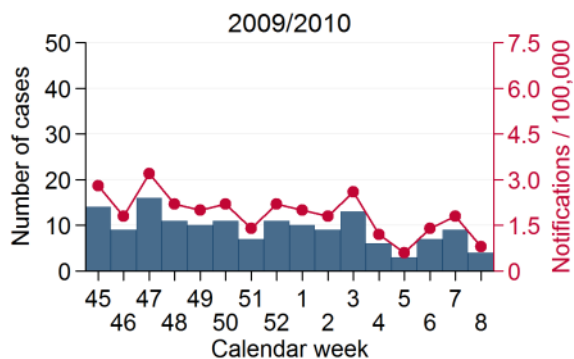
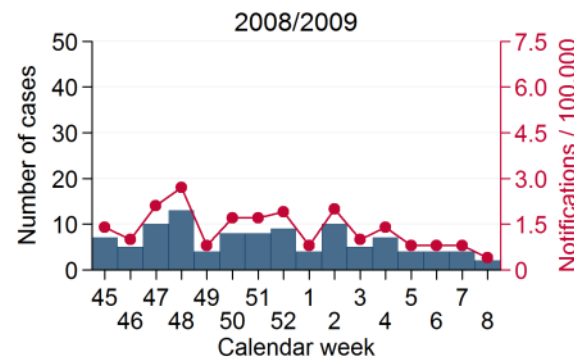
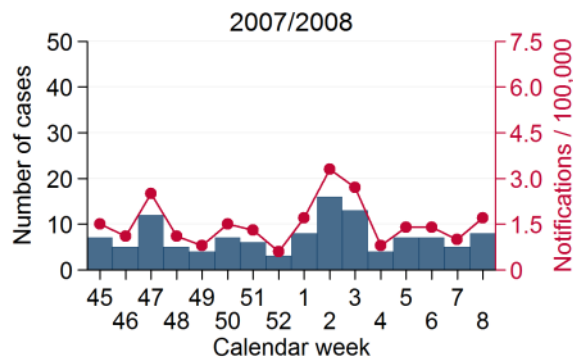
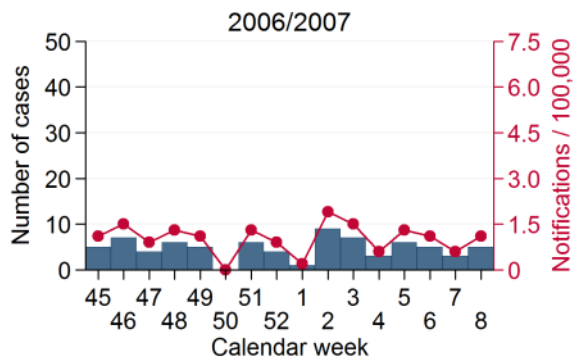
^bWeekly notifications per 100,000 population = median of weekly notification rates from winter seasons 2006/2007 to 2013/2014

Italy



^aSum of weekly notifications from winter seasons 2008/2009 to 2013/2014

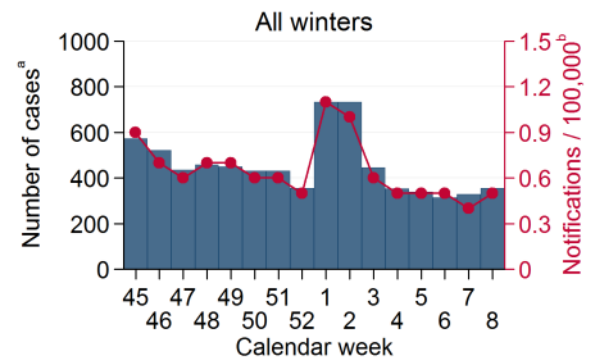
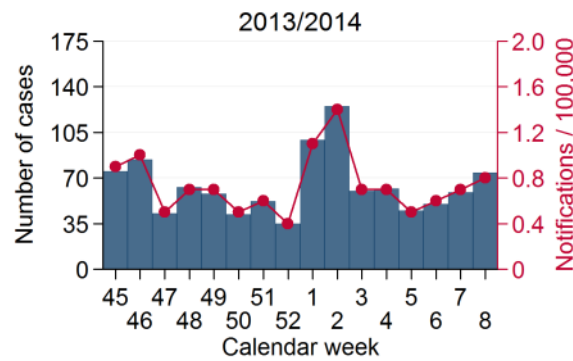
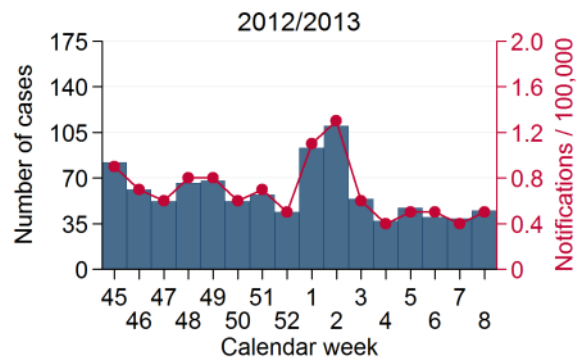
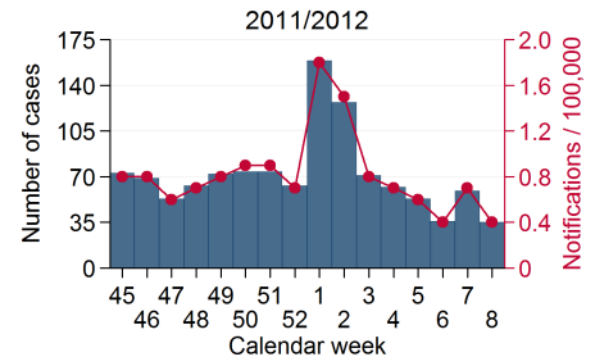
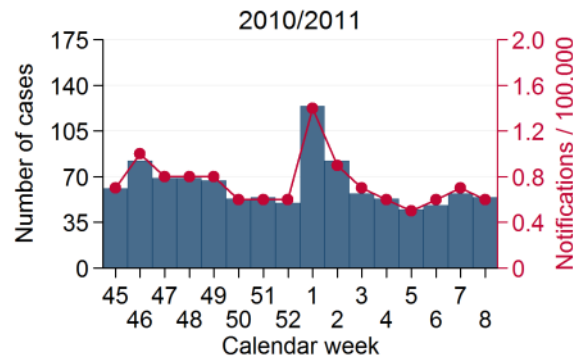
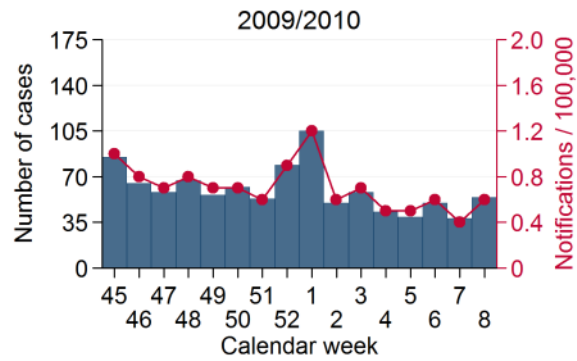
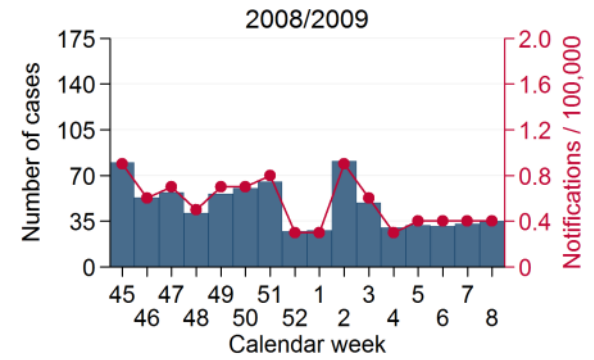
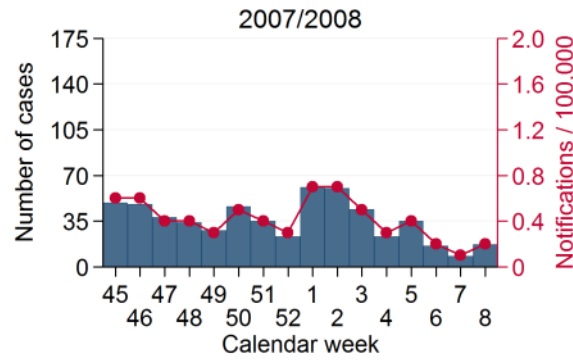
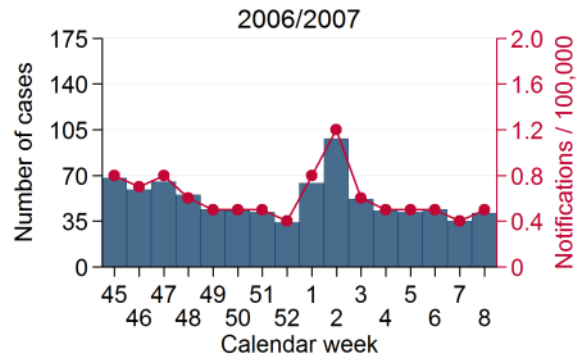
Luxembourg



^aSum of weekly notifications from winter seasons 2006/2007 to 2013/2014

^bWeekly notifications per 100,000 population = median of weekly notification rates from winter seasons 2006/2007 to 2013/2014

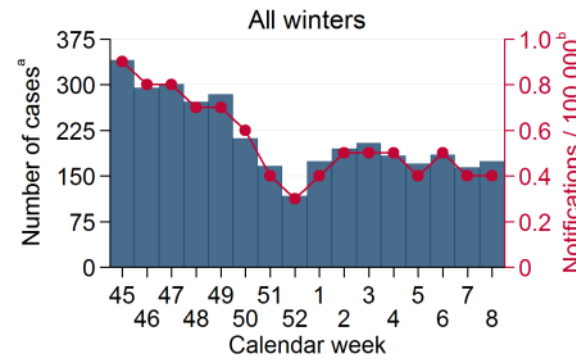
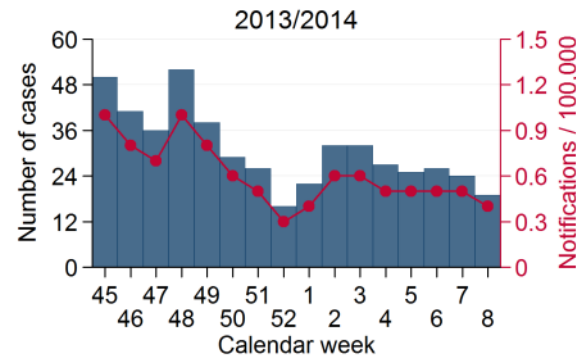
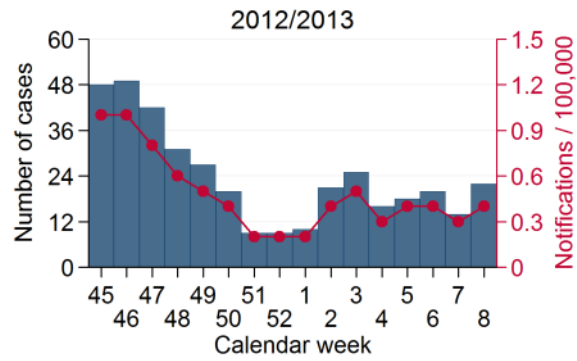
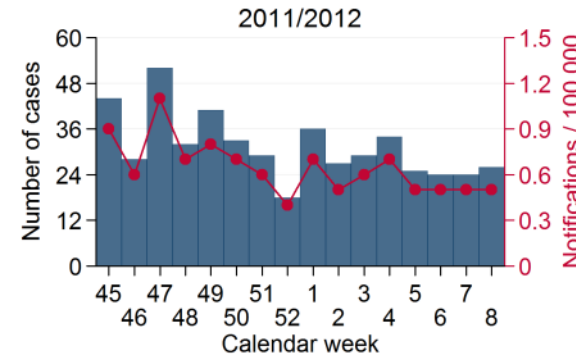
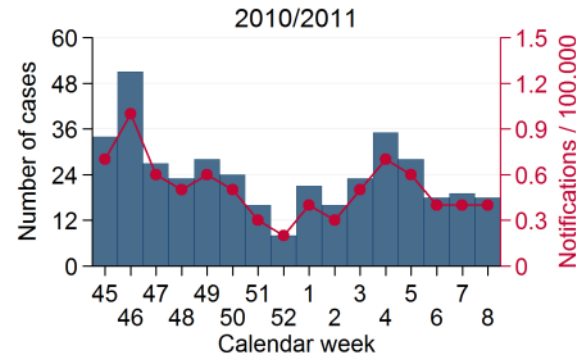
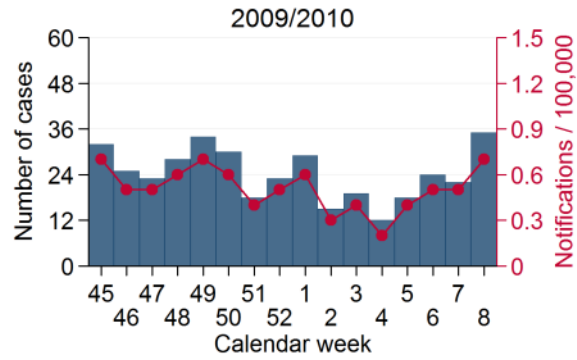
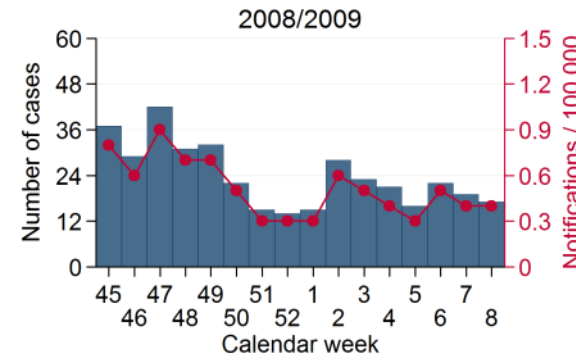
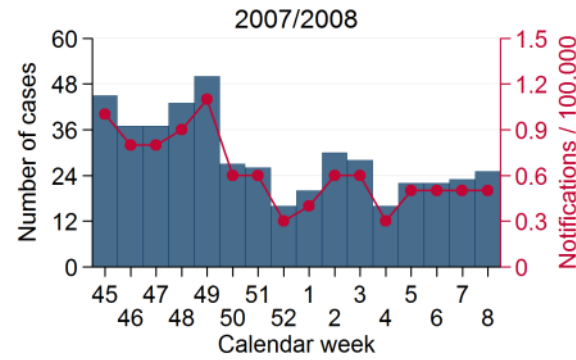
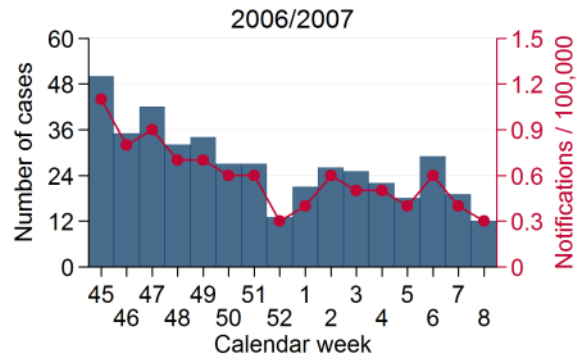
The Netherlands



^aSum of weekly notifications from winter seasons 2006/2007 to 2013/2014

^bWeekly notifications per 100,000 population = median of weekly notification rates from winter seasons 2006/2007 to 2013/2014

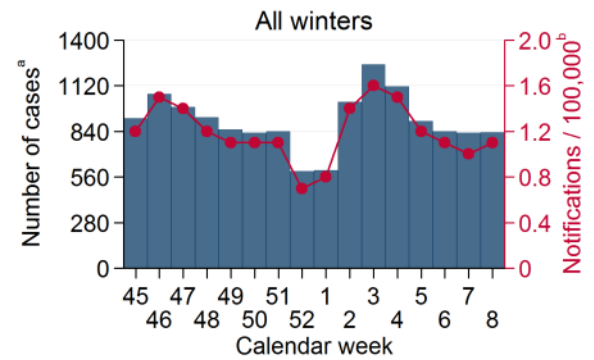
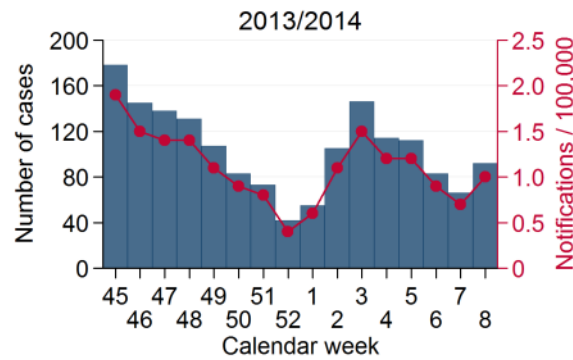
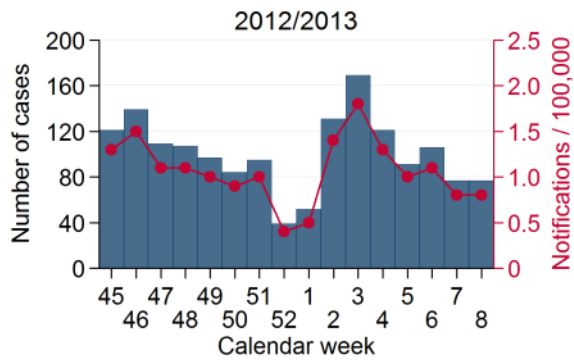
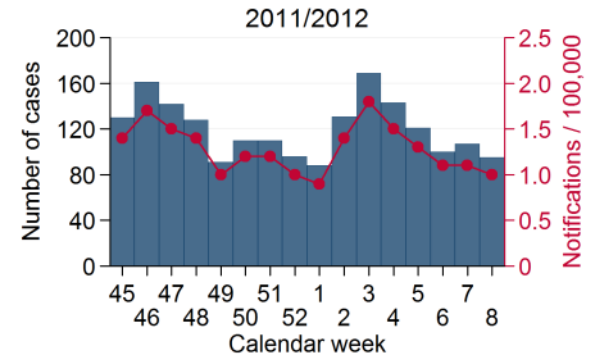
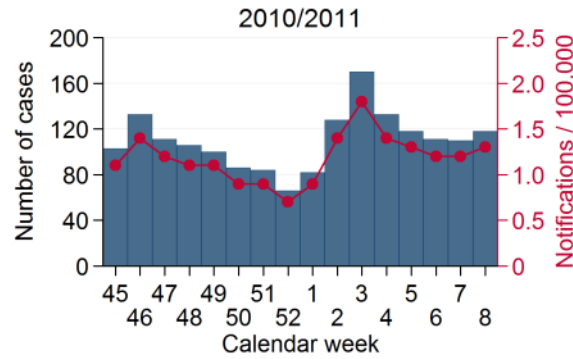
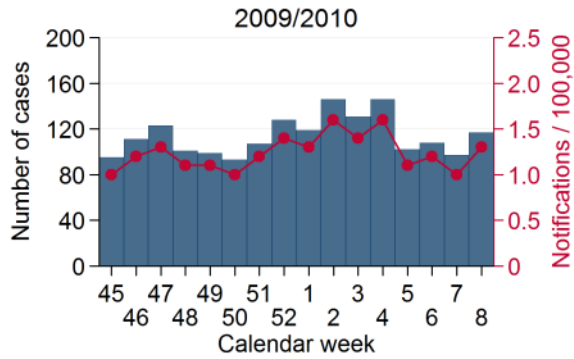
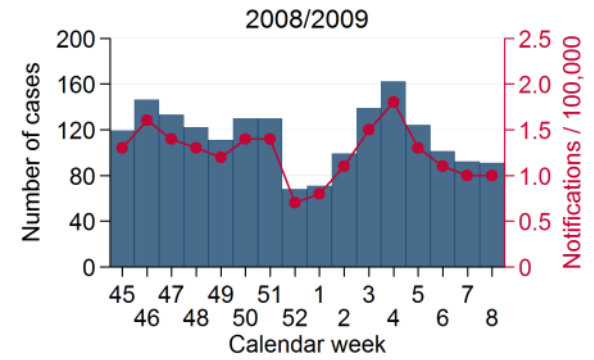
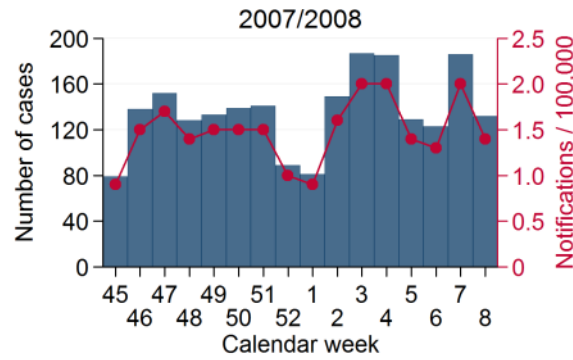
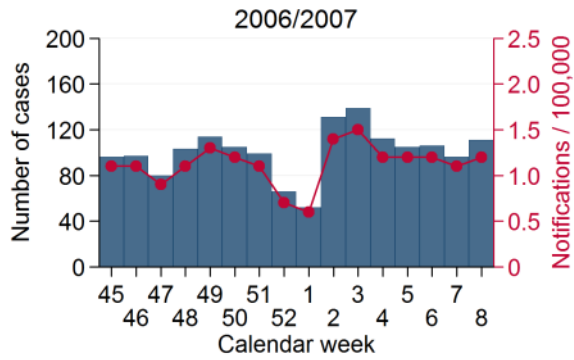
Norway



^aSum of weekly notifications from winter seasons 2006/2007 to 2013/2014

^bWeekly notifications per 100,000 population = median of weekly notification rates from winter seasons 2006/2007 to 2013/2014

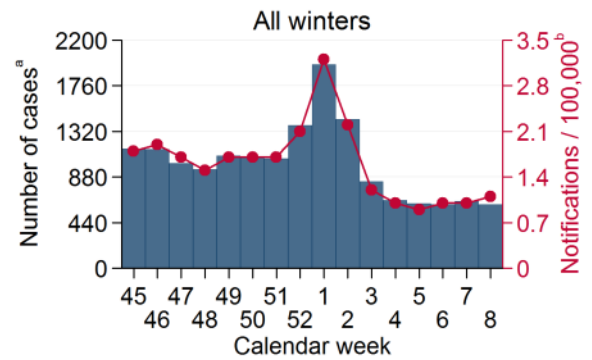
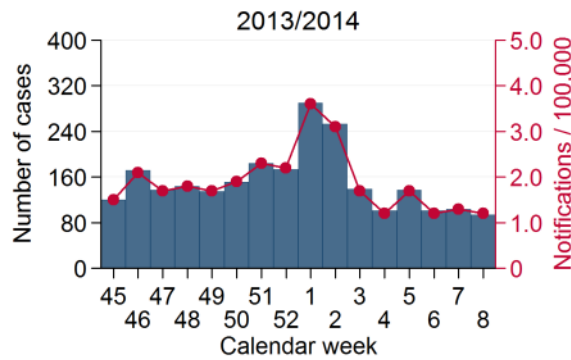
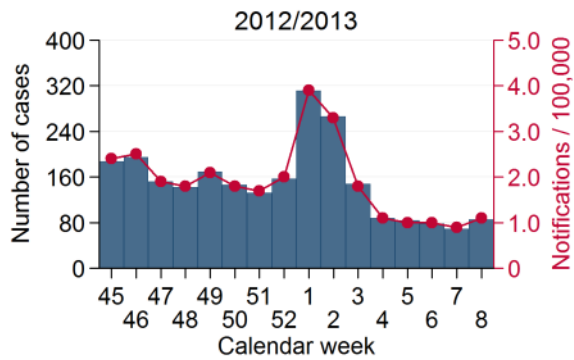
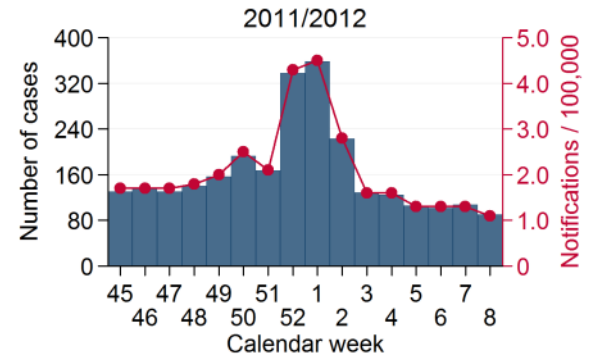
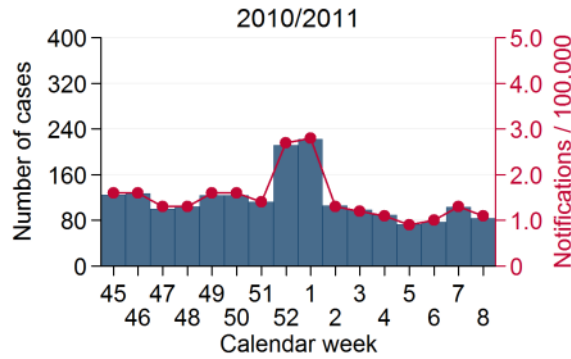
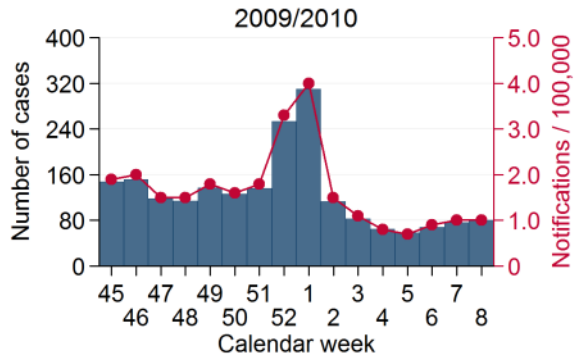
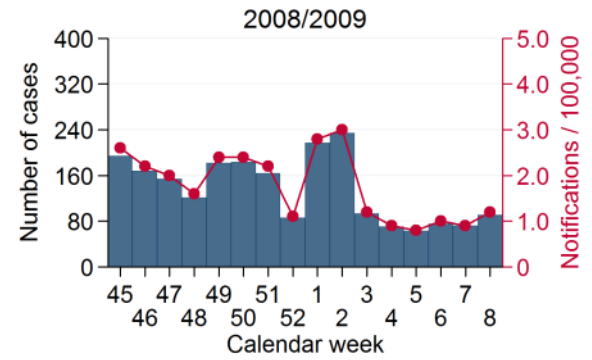
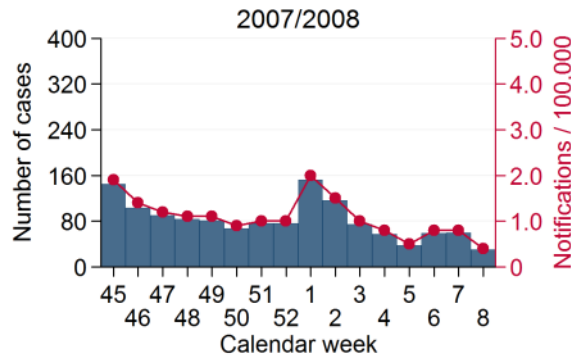
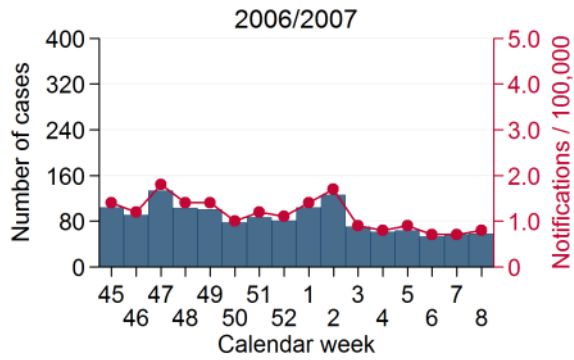
Sweden



^a Sum of weekly notifications from winter seasons 2006/2007 to 2013/2014

^b Weekly notifications per 100,000 population = median of weekly notification rates from winter seasons 2006/2007 to 2013/2014

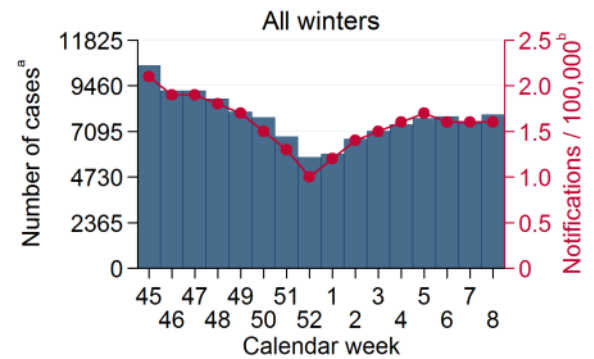
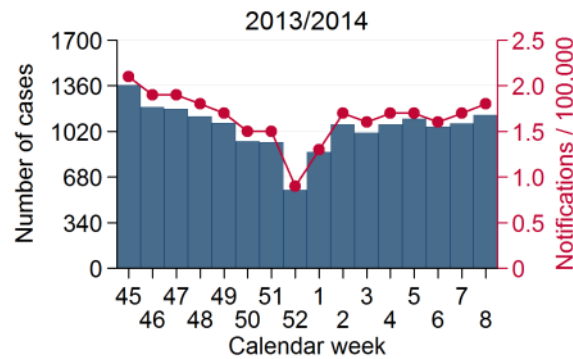
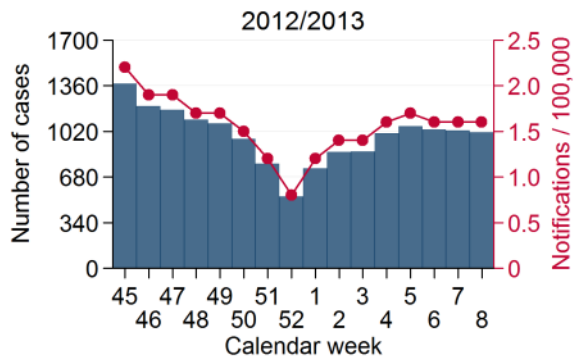
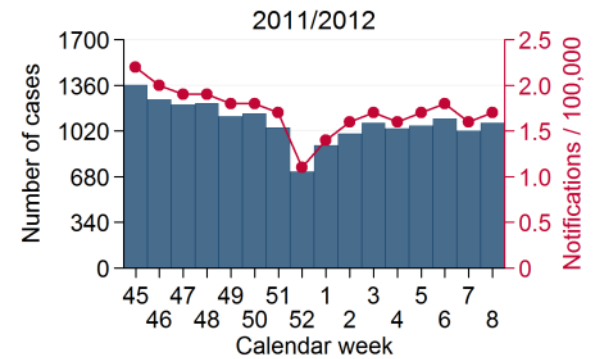
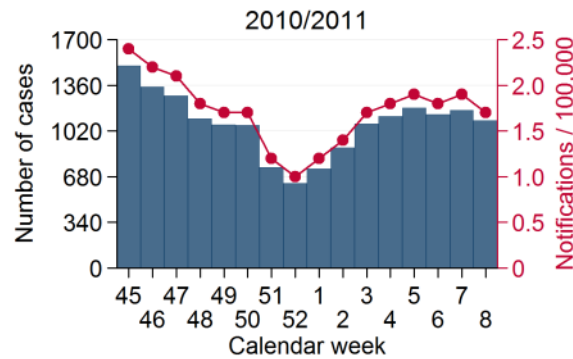
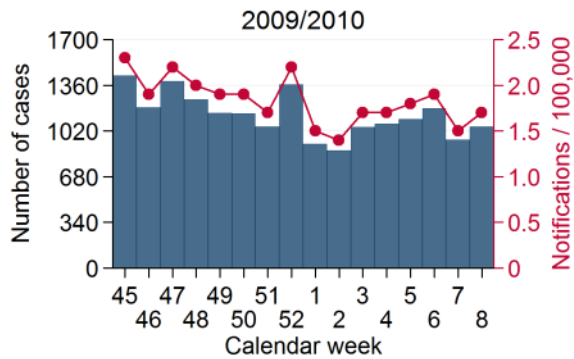
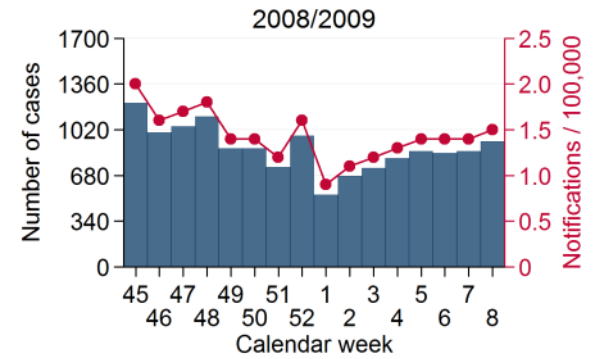
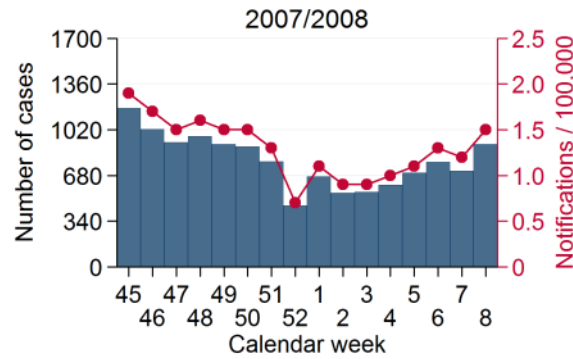
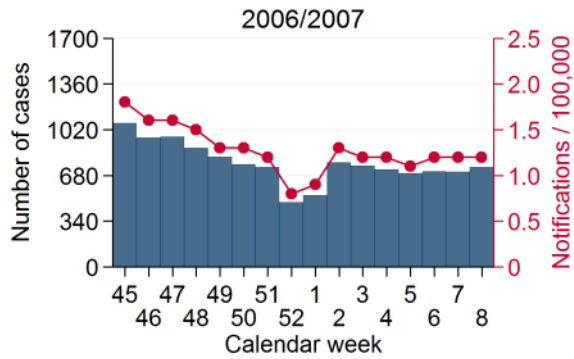
Switzerland



^a Sum of weekly notifications from winter seasons 2006/2007 to 2013/2014

^b Weekly notifications per 100,000 population = median of weekly notification rates from winter seasons 2006/2007 to 2013/2014

The United Kingdom



^aSum of weekly notifications from winter seasons 2006/2007 to 2013/2014

^bWeekly notifications per 100,000 population = median of weekly notification rates from winter seasons 2006/2007 to 2013/2014