

**Gupta et al. SUPPLEMENTARY DATA**

**Supplementary Table 1: Reactivation of latent HIV-1 from different J-Lat clones.**

J-Lat Clone	% Cells Expressing GFP <sup>a</sup>		Copies/mL Extracellular HIV RNA ( $\times 10^5$ )	
	- PMA	+ PMA	- PMA	+ PMA
J-Lat 10.6	1.9	85.7	1.03	92.3
J-Lat 9.2	0.0	10.6	0.028	2.5
J-Lat 8.4	0.0	22.4	0.004	0.18

<sup>a</sup> Percentage of cells expressing GFP was determined by flow cytometry before and after stimulation with 100 nM PMA.

<sup>b</sup> Virion associated extracellular HIV-1 RNA was quantified by RT-PCR before and after stimulation with 100 nM PMA.

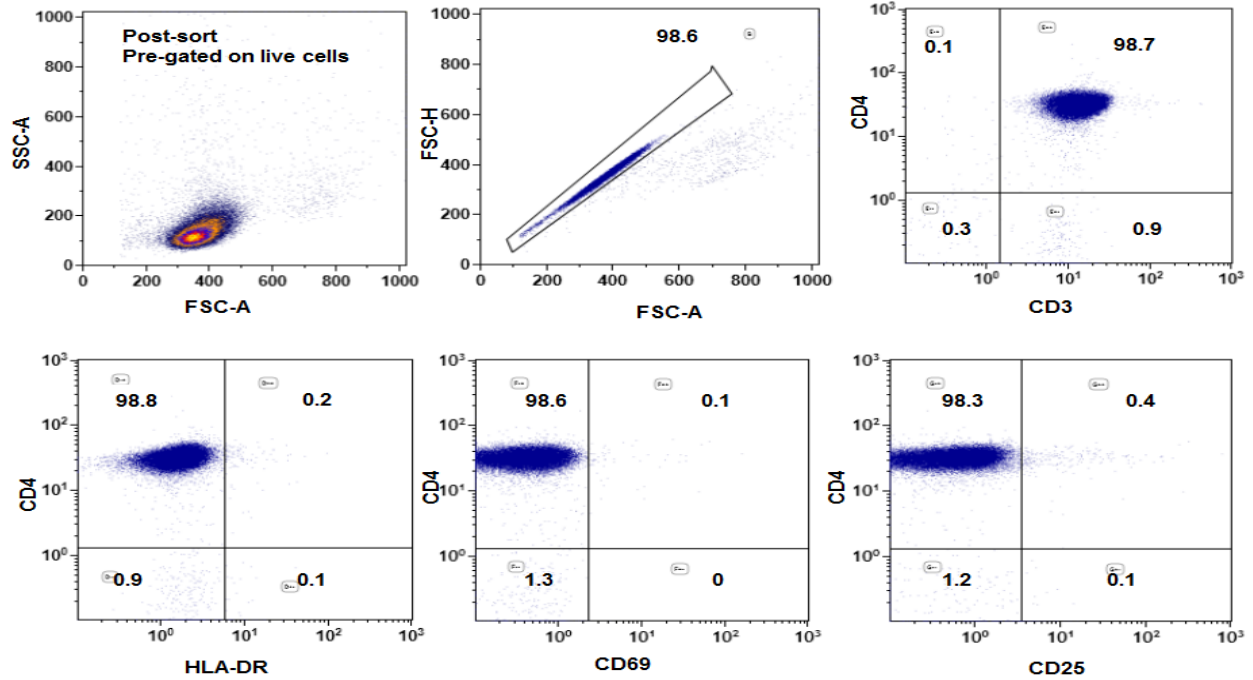
**Supplementary Table 2: Total HIV-1 DNA in rCD4+ T cells before and after exposure to anti-CD3/CD28 monoclonal antibodies**

Participant ID	Cell number before stimulation ( $\times 10^6$ )	Cell number after stimulation ( $\times 10^6$ )	Fold change in cell number	Total HIV-1 DNA before stimulation (copies/ $10^6$ )	Total HIV-1 DNA after stimulation (copies/ $10^6$ )	Fold change in total HIV-1 DNA
001	5	9	1.8	4,861.00	2,393.00	0.5
002	4.5	9.7	2.2	949	1,012.00	1.1
003	3	6.3	2.1	794	404	0.5
004	4	5.6	1.4	1,113.00	852	0.8
005	8	14	1.8	NA	NA	NA
006	6	9.5	1.6	NA	NA	NA
007	2	3.4	1.7	5,279.00	6,514.00	1.2
008	3	5.1	1.7	894	1,123.00	1.3
009	10	17	1.7	56.9	46.2	0.8
010	9	10	1.11	2,508.00	2,017.00	0.8
011	2	1.4	0.7	5,015.00	2,262.00	0.5
012	1.5	2.3	1.5	NA	NA	NA
013	NA	NA	NA	1,198.00	948	0.8
014	NA	NA	NA	NA	NA	NA
015	NA	NA	NA	NA	NA	NA
<b>Mean <math>\pm</math> STD</b>	4.8 $\pm$ 2.9	7.8 $\pm$ 4.7	1.6 $\pm$ 0.4	2266.8 $\pm$ 2015	1757.1 $\pm$ 1842.2	0.8 $\pm$ 0.3

**Supplementary Table 3: Amplification of extracellular virion-associated HIV-1 RNA derived from TZM-bl cells co-cultured with rCD4+ T cells from an HIV-1-infected participant.**

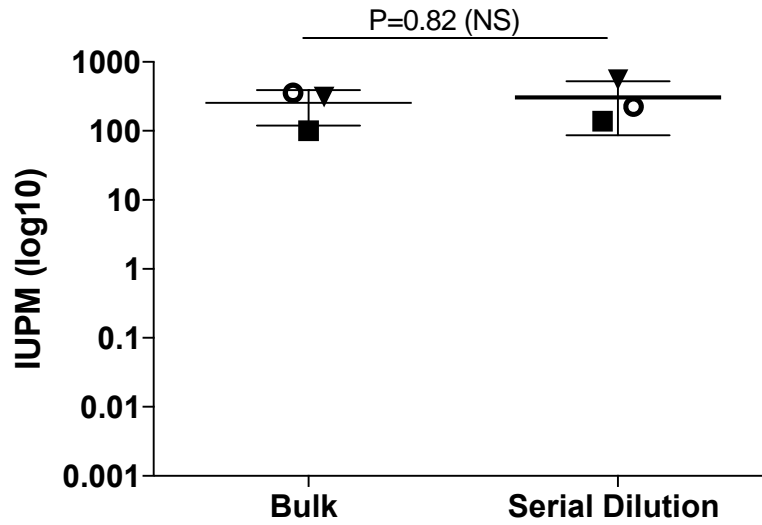
<b>Participant ID</b>	<b>Number of cells cultured/well</b>	<b>Virion-associated HIV-1 RNA (copies/mL) Day 3</b>	<b>Virion-associated HIV-1 RNA (copies/mL) Day 10</b>	<b>B-Gal RLU (10<sup>6</sup>)</b>
016	31,000	20	27,340	2.6 (2.4- 2.7)

CD3/CD28 mAb-activated participant rCD4+T cells were added to TZM-bl cells. Following 48 h incubation, activated CD8-depleted PBMC were added and co-cultivation was continued for an additional 10 days. Extracellular virion associated HIV-1 RNA was measured in culture supernatant by RT-PCR.



**Supplementary Fig. 1: Flow cytometric analysis of the isolated rCD4<sup>+</sup> T cell population.**

rCD4<sup>+</sup> T cells purity was > 98% (n=16, 98.1 +/- 0.8%).



**Supplementary Fig. 2: Comparison of IUPM from bulk stimulated or stimulated after serial dilution of rCD4+ T cells.** Statistical comparison of the IUPM values determined for rCD4+ T cells isolated from HIV-infected individuals in which cells were either exposed to anti-CD3/CD28 in bulk (c.f. Fig. 3a), or following serial dilution. Statistical differences were assessed using a parametric T test.