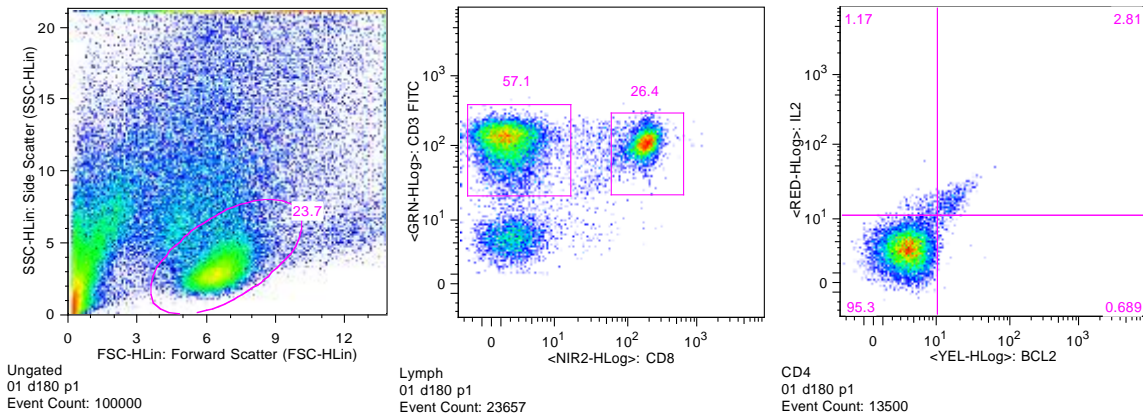
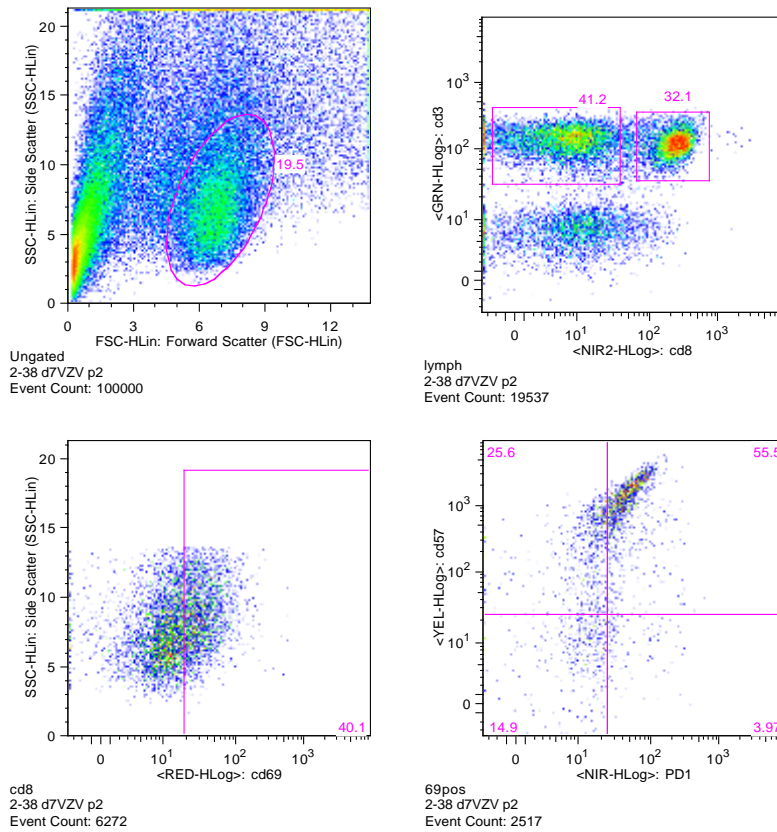


Supplemental Figure 1. VZV-specific Exhausted and Senescent CD4 T cells in Young and Older Adults. The data were derived from 25 young and 33 older adults whose PBMC were ex vivo restimulated with live VZV and mock-infected control. The data show expression of PD1 and CD57 on CD69+ T cells measured by flow cytometry in VZV-restimulated PBMC after subtraction of background control. Bars show mean and SEM of the VZV-specific CD4+CD69+PD1+% (left graph) and CD4+CD69+CD57+% (right graph) at each visit in young and older adults. There were no significant differences between young and older adults.

A



B



Supplemental Figure 2. Gating Strategy. **Panel A** shows the gating strategy for CD4+IL2+Bcl2+ T cells. Similar gating was used for CD8+ T cells. **Panel B** shows the gating strategy for CD8+CD69+CD57+PD1+ T cells. Similar strategy was used for CD4+ T cells.