

# **GTSE1 promotes cell migration and invasion by regulating EMT in hepatocellular carcinoma and is associated with poor prognosis.**

Xiaojuan Wu<sup>1,2\*</sup>, Hongbo Wang<sup>2\*</sup>, Yifan Lian<sup>2\*</sup>, Lubiao Chen<sup>1</sup>, Lin Gu<sup>2</sup>, Jialiang Wang<sup>2</sup>, Yanlin Huang<sup>1,2</sup>, Meihai Deng<sup>3</sup>, Zhiliang Gao<sup>1\*</sup>, Yuehua Huang<sup>1,2\*</sup>

1 Department of Infectious Diseases, The Third Affiliated Hospital of Sun Yat-sen University, Guangzhou, 510630, China.

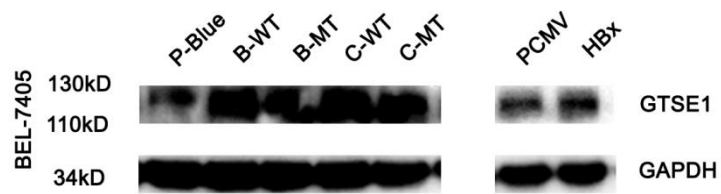
2 Guangdong Provincial Key Laboratory of Liver Disease Research, The Third Affiliated Hospital of Sun Yat-sen University, Guangzhou, 510630, China.

3 Department of Hepatobiliary Surgery, The Third Affiliated Hospital of Sun Yat-sen University, Guangzhou, 510630, China.

## **Table of contents**

Supplementary Figure 1.....	2
Supplementary Figure 2.....	3
Supplementary Figure 3.....	4
Supplementary Figure 4.....	5
Supplementary Figure 5.....	6
Supplementary Figure 6.....	7

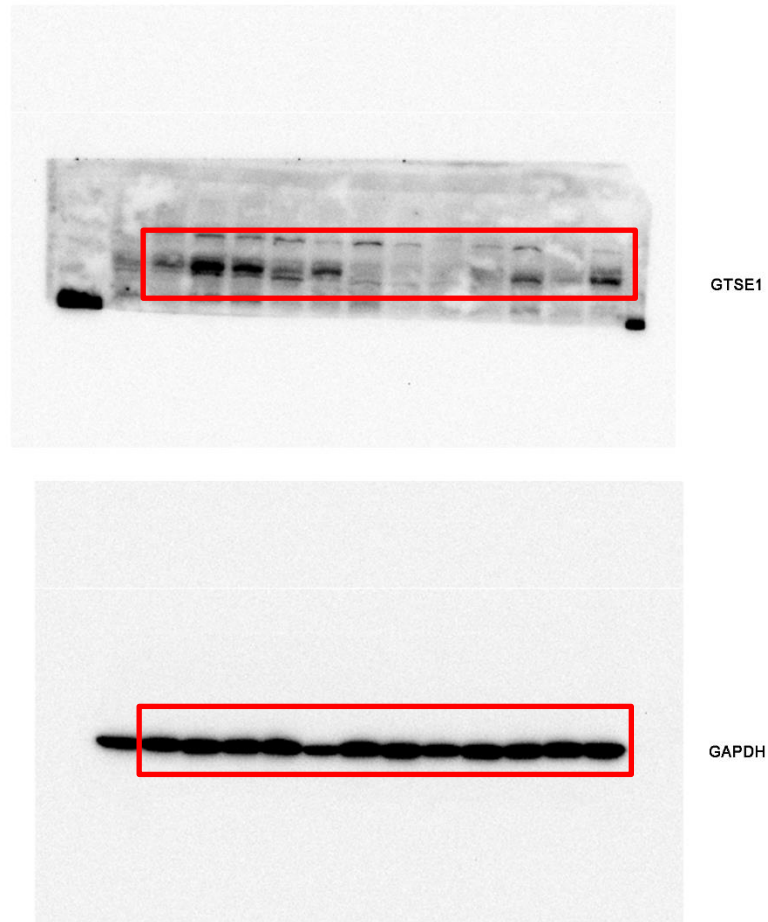
### Supplementary Figure 1



### Supplementary Fig. 1. HBV infection elevates GTSE1 expression in BEL-7405.

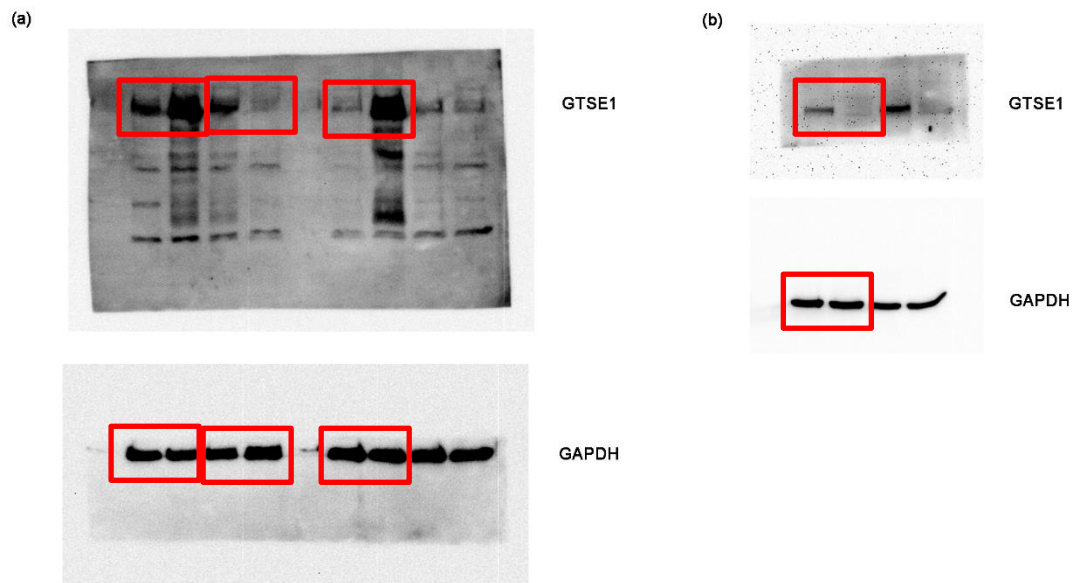
GTSE1 expression in BEL-7405 treated with different genotype of HBV or HBx or control. PBlue: control; BW: genotype B-wild; BM: genotype B-mutant; CW: genotype C-wild; CM: genotype-C mutant.

**Supplementary Figure 2**



**Supplementary Fig. 2. Original data for Fig. 1e**

**Supplementary Figure 3**

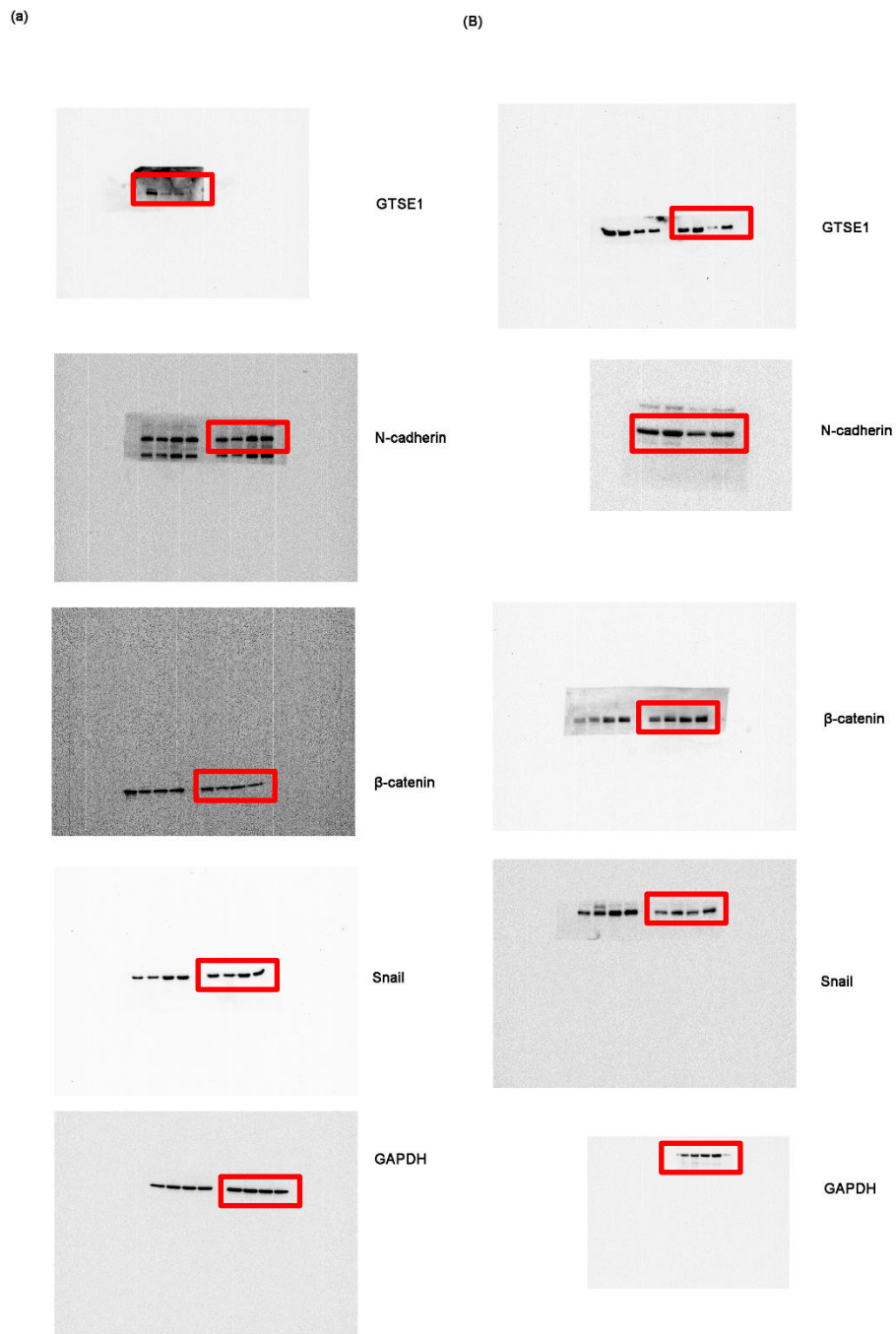


**Supplementary Fig. 3. Original data for Fig. 2a**

(a) From left to right: QGY-7703 vector, QGY-7703 GTSE1, QGY-7703 shNC, QGY-7703 shGTSE1, SMMC-7721 vector, SMMC-7721 GTSE1.

(b) From left to right: SMMC-7721 shNC, SMMC-7721 shGTSE1.

## Supplementary Figure 4

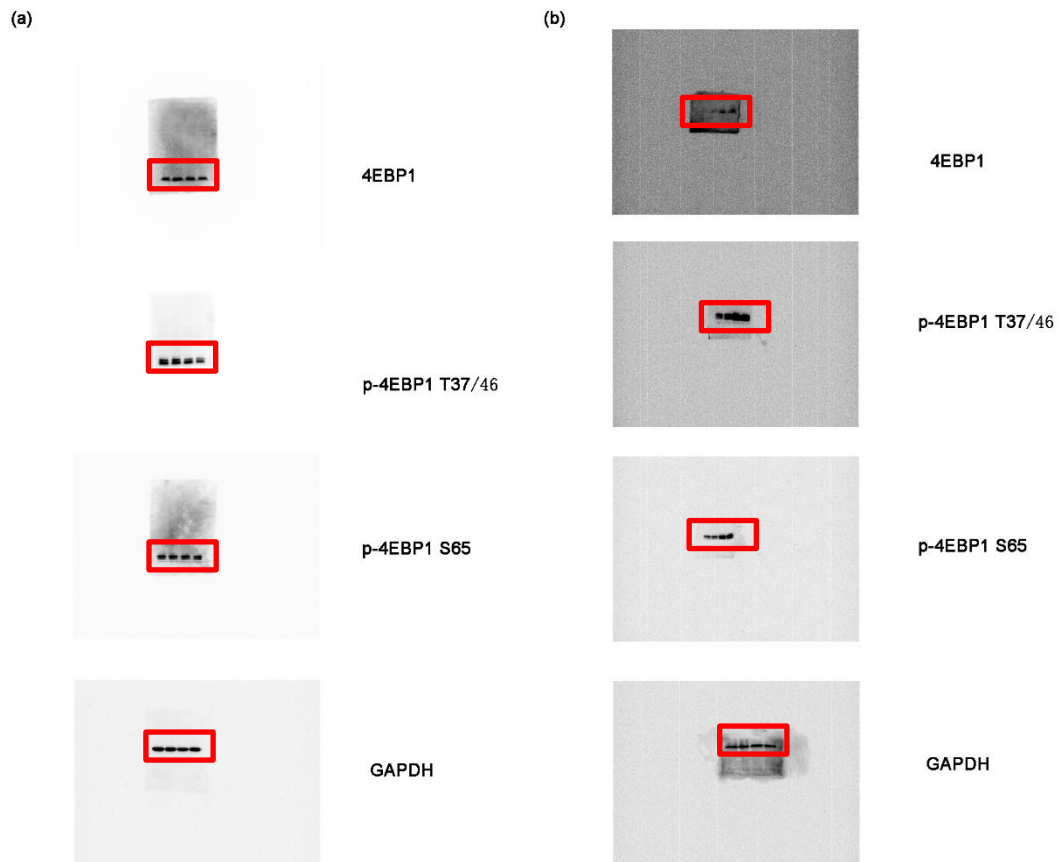


Supplementary Fig. 4. Original data for Fig. 5a

(a) From left to right: QGY-7703 shNC, QGY-7703 shGTSE1, SMMC-7721 shNC, SMMC-7721 shGTSE1.

(b) From left to right: QGY-7703 vector, QGY-7703 GTSE1, SMMC-7721 vector, SMMC-7721 GTSE1.

## Supplementary Figure 5

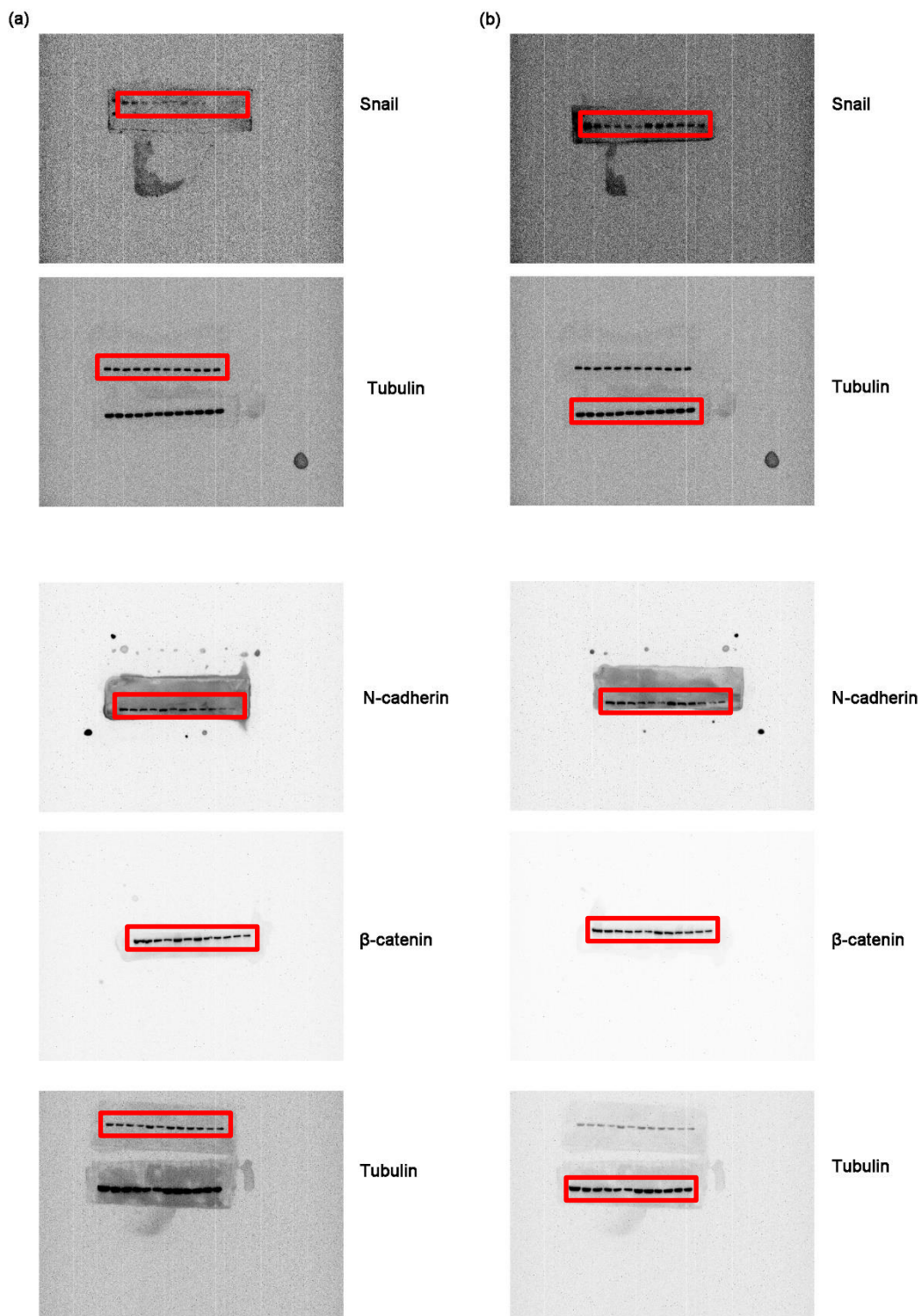


Supplementary Fig. 5. Original data for Fig. 5c

(c) From left to right: QGY-7703 shNC, QGY-7703 shGTSE1, SMMC-7721 shNC, SMMC-7721 shGTSE1.

(d) From left to right: QGY-7703 vector, QGY-7703 GTSE1, SMMC-7721 vector, SMMC-7721 GTSE1.

Supplementary Figure 6



Supplementary Fig. 6. Original data for Fig. 6a