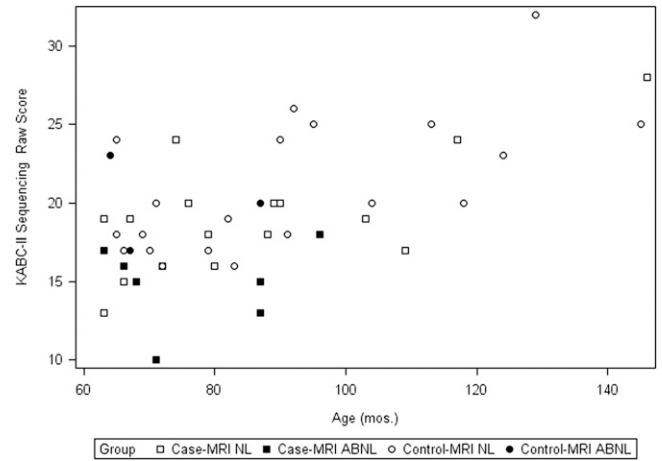
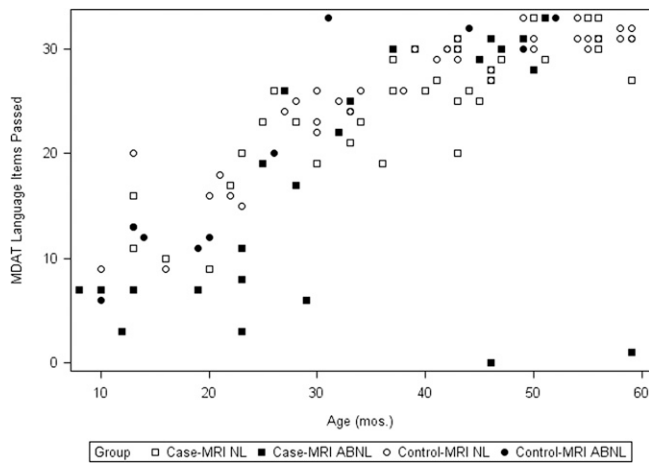


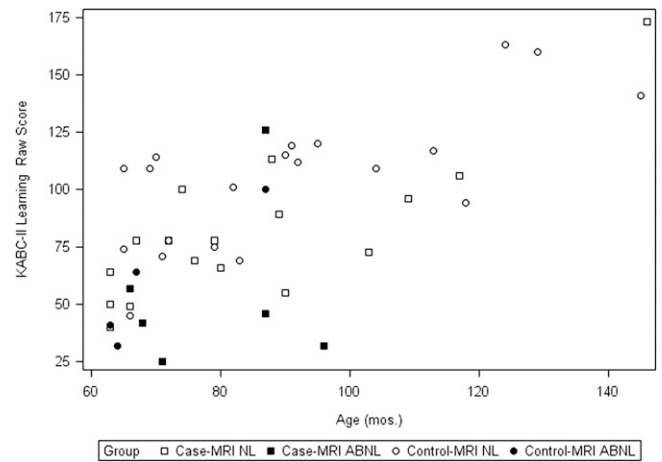
SUPPLEMENTAL FIGURE 1. Number of items passed for Malawi Developmental Assessment Tool (MDAT) fine motor (FM) subscale.



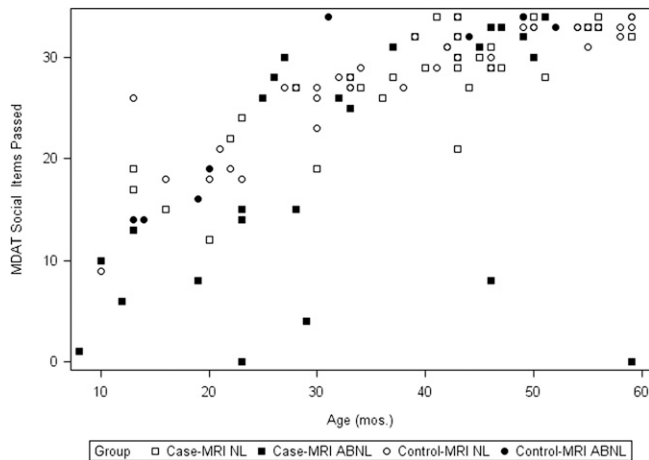
SUPPLEMENTAL FIGURE 4. Raw scores on KABC-II sequencing.



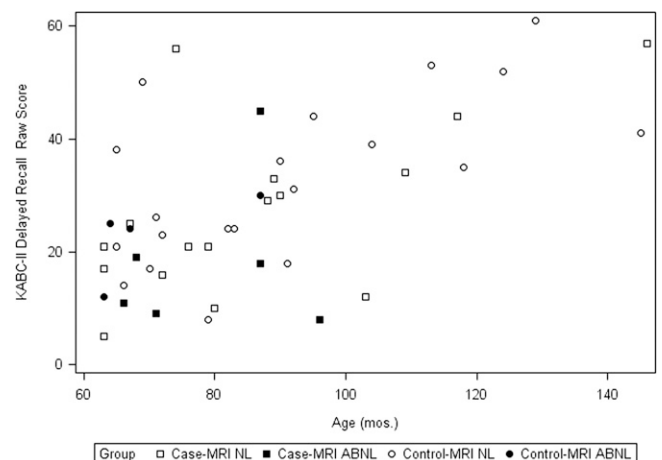
SUPPLEMENTAL FIGURE 2. Number of items passed for Malawi Developmental Assessment Tool (MDAT) language (LG) subscale.



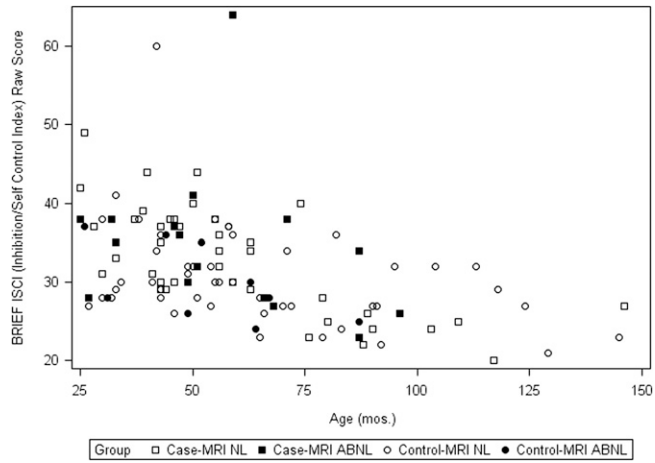
SUPPLEMENTAL FIGURE 5. Raw scores on KABC-II learning.



SUPPLEMENTAL FIGURE 3. Number of items passed for Malawi Developmental Assessment Tool (MDAT) social (SC) subscale.



SUPPLEMENTAL FIGURE 6. Raw scores on KABC-II delayed recall.



SUPPLEMENTAL FIGURE 7. Raw Score on BRIEF Inhibitory Self Control Index (ISCI) (higher scores reflect lower inhibition and self-control). All figures show the distribution of raw scores on measure of development, cognitive function, and behavior by age (in months), group (case vs control), and magnetic resonance imaging (Normal [NL] or Abnormal [ABNL]).