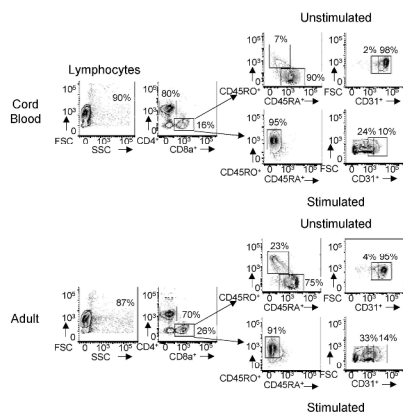


Supplemental Figure S1



Supplemental Figure S1: Gating Strategy

Representative flow plots depicting the gating strategy for human cord blood (Top) and adult PBMCs (Bottom) for both stimulated and unstimulated samples. Lymphocytes were gated, followed by CD4⁺ or CD8a⁺. Naive cells were identified by CD45RA⁺CD45RO⁻, and activated cells were identified by CD45RO⁺CD45RA⁻. Finally, these respective populations were gated on CD31.

Supplemental Figure S1: Gating Strategy

Representative flow plots depicting the gating strategy for human cord blood (Top) and adult PBMCs (Bottom) for both stimulated and unstimulated samples. Lymphocytes were gated, followed by CD4⁺ or CD8a⁺. Naive cells were identified by CD45RA⁺CD45RO⁻, and activated cells were identified by CD45RO⁺CD45RA⁻. Finally, these respective populations were gated on CD31.

123x157mm (1000 x 1000 DPI)