

Investigation of brain tissue infiltration by medulloblastoma cells
in an *ex vivo* model

Anuja Neve¹, Karthiga Santhana Kumar¹, Dimitra Tripolitsioti¹, Michael Grotzer^{1,2} and Martin Baumgartner^{1,*}

¹ Children's Research Centre, Oncology, University Children's Hospital, August-Forel Strasse 1, CH-8008 Zürich, Switzerland

² Department of Oncology, University Children's Hospital Zürich, Steinwiesstrasse 75, CH-8032 Zürich, Switzerland

*Correspondence to: Martin Baumgartner, University Children's Hospital Zürich, Children's Research Centre, Dept. of Oncology, Paediatric Neuro-Oncology group, August-Forel Strasse 1, CH-8008 Zürich, E-mail: Martin.Baumgartner@kispi.uzh.ch, Phone: +41 44 634 88 20, FAX: +41 44 634 88 59

Keywords:

Organotypic cerebellar slice culture, medulloblastoma, epidermal growth factor, cell motility and invasiveness/infiltration dynamics, molecular subgroups

Fig. S1

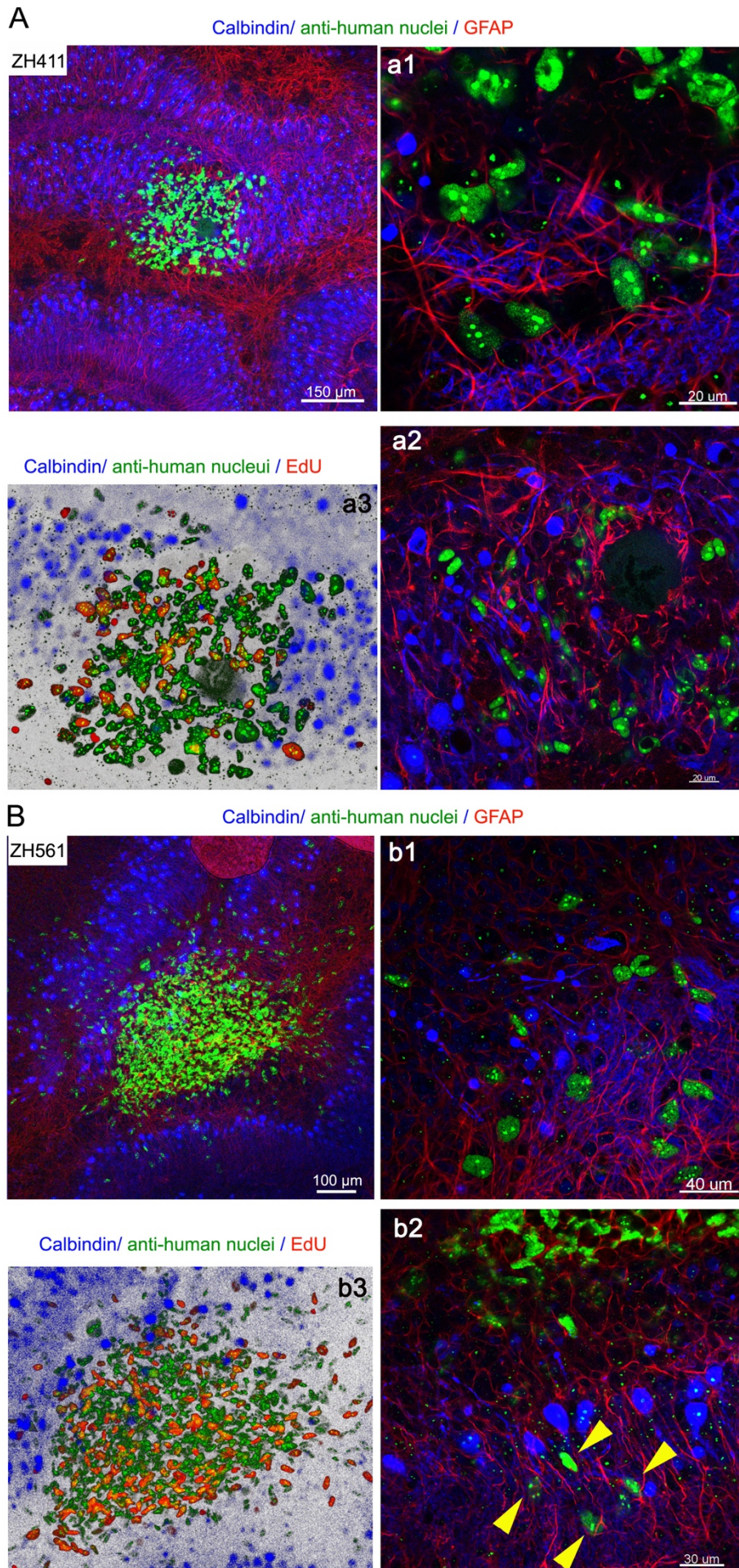


Figure S1 Proliferation and dissemination of human glioblastoma cells in brain slices. Spheroids of ZH411 (A) and ZH561 (B) tumour cells derived from primary tumour material were implanted in DIV 30 brain slices. Stacks of confocal IFA sections of brain slice around implanted tumour cells are shown at day 5 after implantation. a1, a2, b1 and b2 are higher magnification images of single sections of the compressed image stacks shown. a3 and b3 show EdU-positive nuclei.