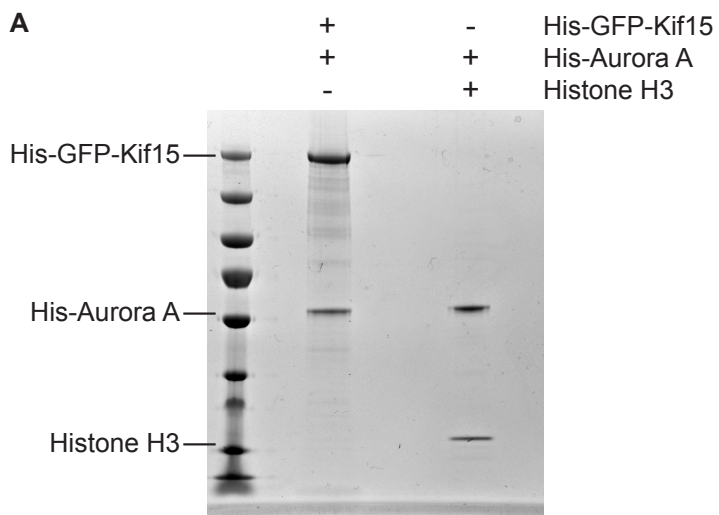


Supplementary Figure 7. In vitro kinase assay Aurora A and Kif15



B

Position	Target	Highest PTM score	Sequence motif	Aurora A consensus	In vivo confirmation (reference)
568	S	100%	KLGQGF _s PKALKE	No	Dephoure et al., 2008; Olsen et al., 2010; Kettenbach et al., 2011
1134	S	53.9%	LEHVMG _s ATEYPQ	No	Kettenbach et al., 2011
1141	S	100%	ATEYPQ _s PKTPPH	No	Olsen et al., 2010; Kettenbach et al., 2011
1144	T	100%	YPQSPK _t PPHFQA	No	Olsen et al., 2010; Kettenbach et al., 2011
1169	S	100%	IEDGRA _s KTSLQH	Yes	Olsen et al., 2010; Kettenbach et al., 2011
1171	T	92.9%	DGRASK _t SLQHLV	No	Kettenbach et al., 2011
1172	S	7.1%	GRASK _t SLQHLVT	No	Kettenbach et al., 2011

Supplementary Figure 7. In vitro kinase assay with Aurora A and Kif15. (A) 5 µg recombinant mouse His-GFP-Kif15 was mixed with 0.75 µg human His-Aurora (first lane). Second lane contained 1 µg of Histone 3 and 0.75 µg of human His-Aurora A (control). (B) Phosphorylation sites on Kif15, identified by mass-spectrometry. Only sites that were confirmed previously in vivo are shown. Note that only S1169 and S1172 matched the Aurora A consensus site R-X-[S/T].