

Fig S3

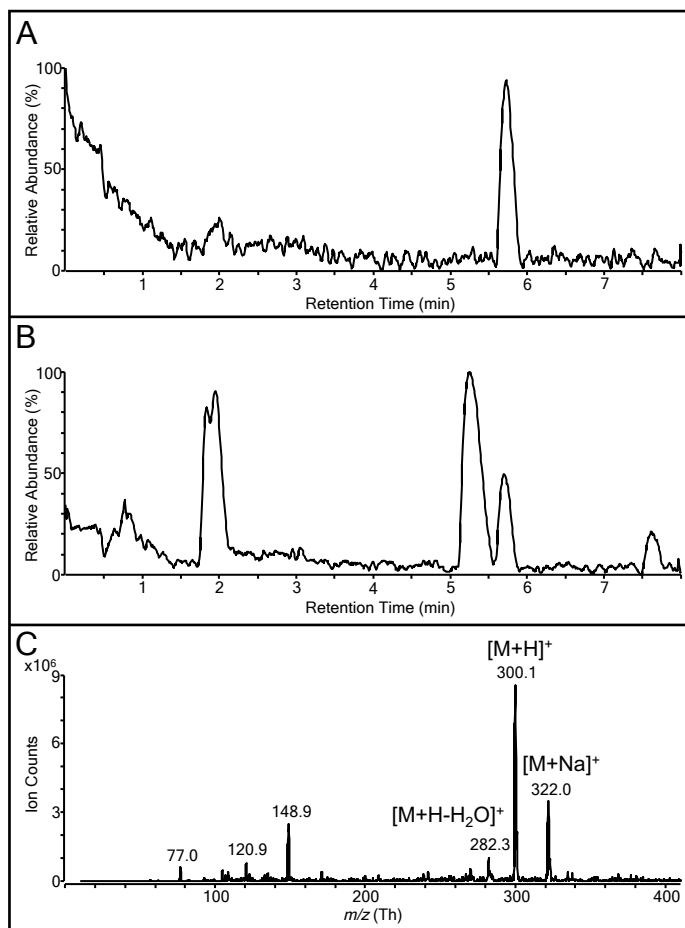


Fig. S3: A) BPC chromatogram generated from a 5 μL injection of a 1 μM solution of PEA, 5 pmol on column; B) BPC chromatogram generated from the injection of the concentrated pipette extract; C) MS2 Scan in positive ion mode at RT=5.7 min of the pipette extract showing peaks of the protonated PEA molecular ion at $m/z = 300$ Th, of the sodium adduct at 322 Th and of the molecular ion arising from the water loss at 282 Th. MS2 spectra of both PEA standard and pipette extract at 5.7 min are identical (only trace of standard is shown).