

Supplementary Information:

Predicting Molecular Crowding Effects in Ion-RNA Interactions

Tao Yu^{1,2}, Yuhong Zhu^{1,3}, Zhaojian He¹, Shi-Jie Chen^{1*}

¹Department of Physics, Department of Biochemistry, and Informatics Institute, University of Missouri, Columbia, MO 65211

²Department of Physics, Jiangnan University, Wuhan, Hubei 430056, China

²Department of Physics, Hangzhou Normal University, Hangzhou, Zhejiang 310036, China

* Author to whom correspondence should be addressed; E-mail: chenshi@missouri.edu

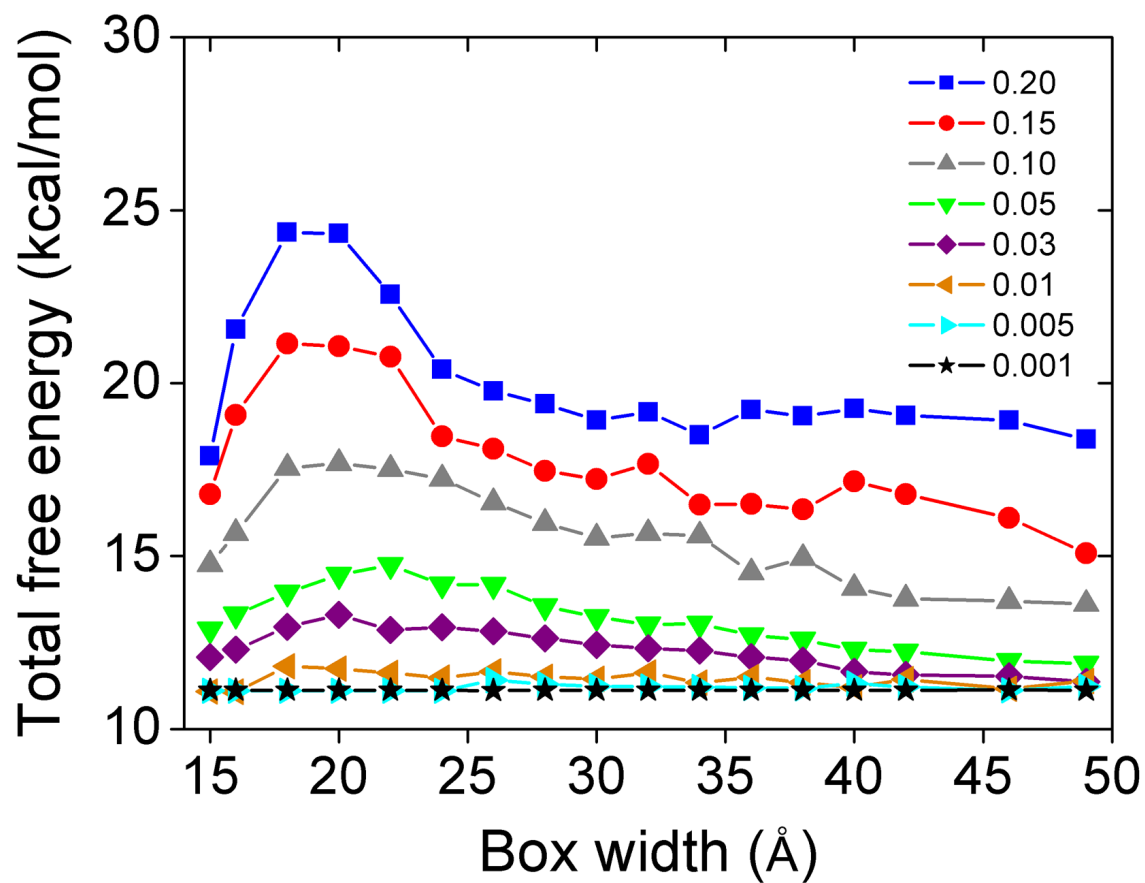


Figure S1: The dependence of the total free energy ΔG_{tot} on the ISB box width for the different crowder volume fractions for a 12-bp RNA helix. For all these cases, the solution contains 0.1M NaCl and 0.01M MgCl₂.

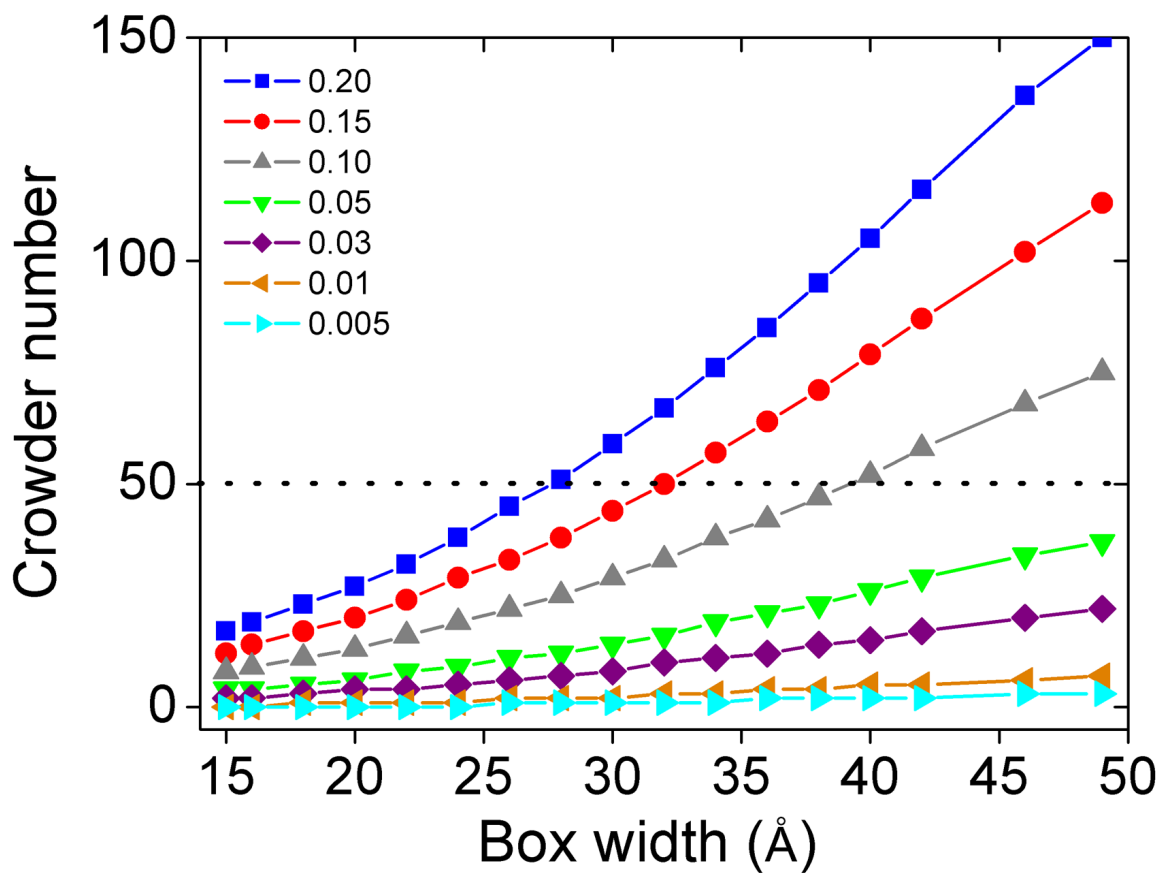


Figure S2: The number of crowders inside the ISB as a function of the ISB box width for a 12-bp RNA helix for the different volume fraction values

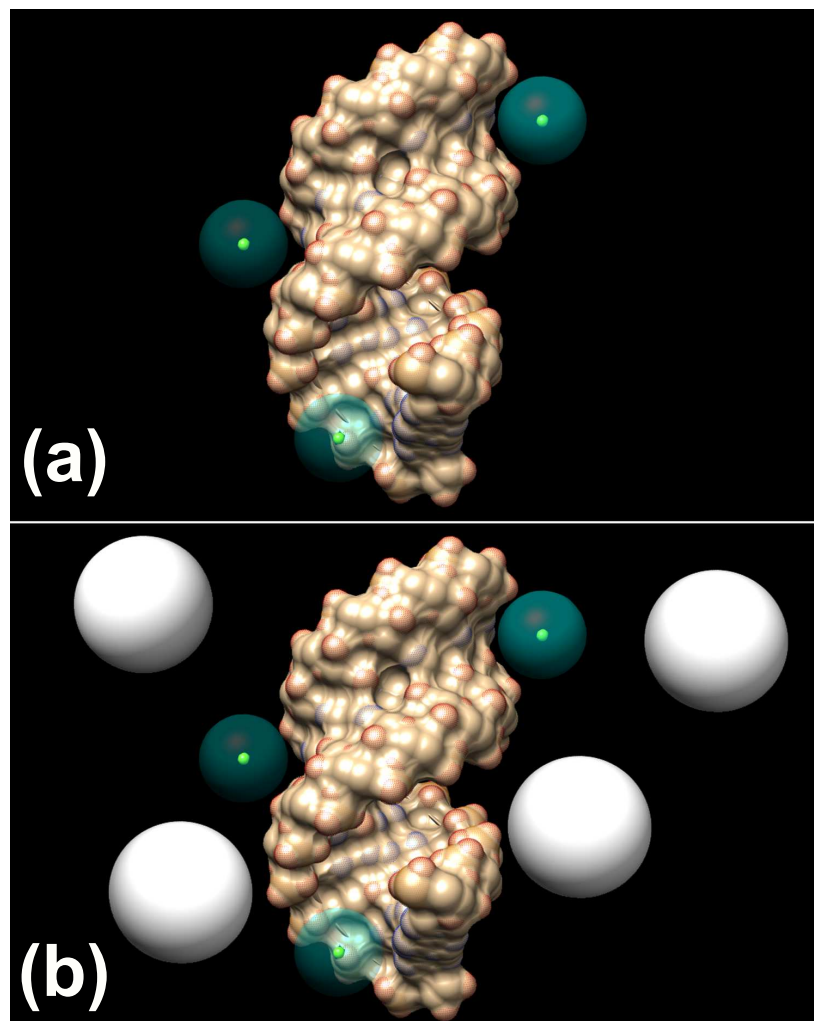


Figure S3: Ion-crowder competition in RNA binding for a 12-bp helix. (a) ions only and (b) ions and crowders in competition. The white and dark green spheres represent the crowders and Mg^{2+} ions, respectively.

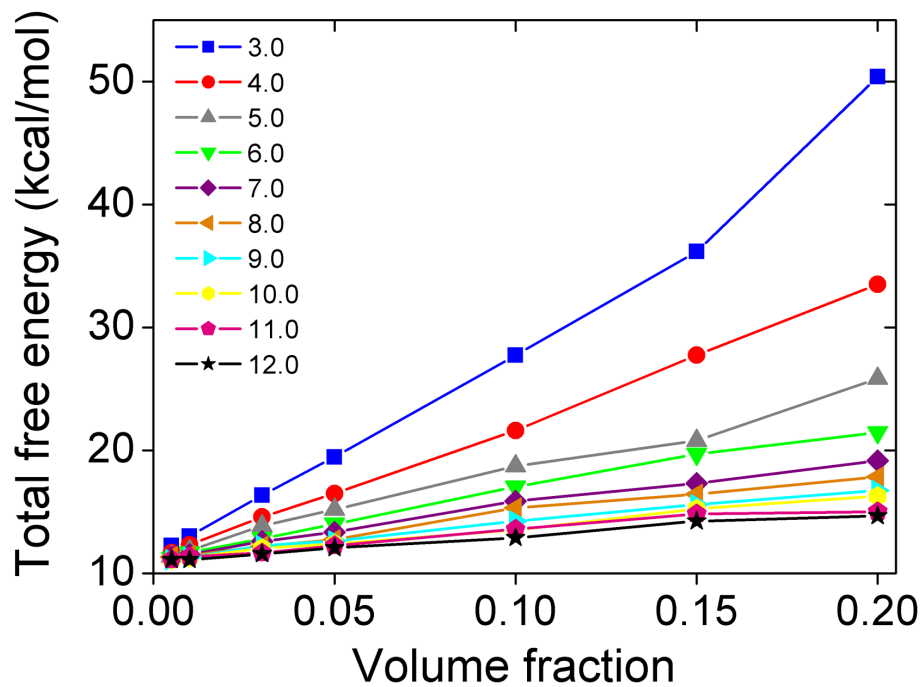


Figure S4: Total free energy ΔG_{tot} for a 12-bp helix structure in a crowded solution as a function of the crowder volume fraction for the different crowder sizes. For all these cases, the solution contains 0.1M NaCl and 0.01M MgCl₂.

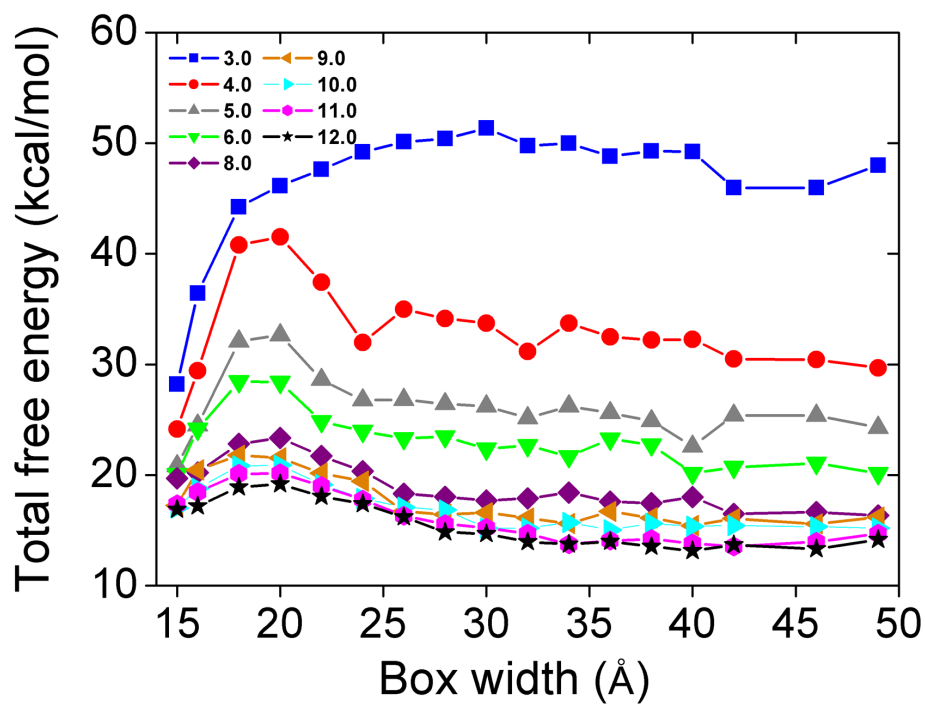


Figure S5: Total free energy ΔG_{tot} for a 12-bp helix structure in a crowded solution as a function of the ISB box width for the different crowder sizes. For all these cases, the solution contains 0.1M NaCl and 0.01M MgCl₂.

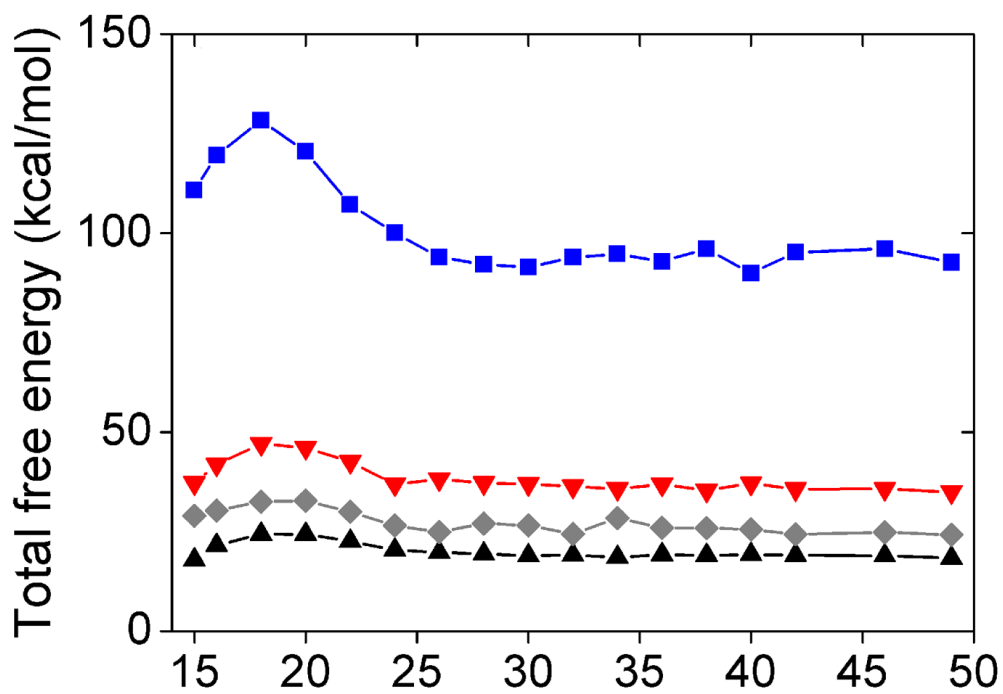


Figure S6: Total free energy ΔG_{tot} predicted with the different ISB box widths for four representative RNA structures: tRNA (blue square), mRNA (red down triangle), BWYV (gray diamond), and 12-bp RNA (black up triangle).